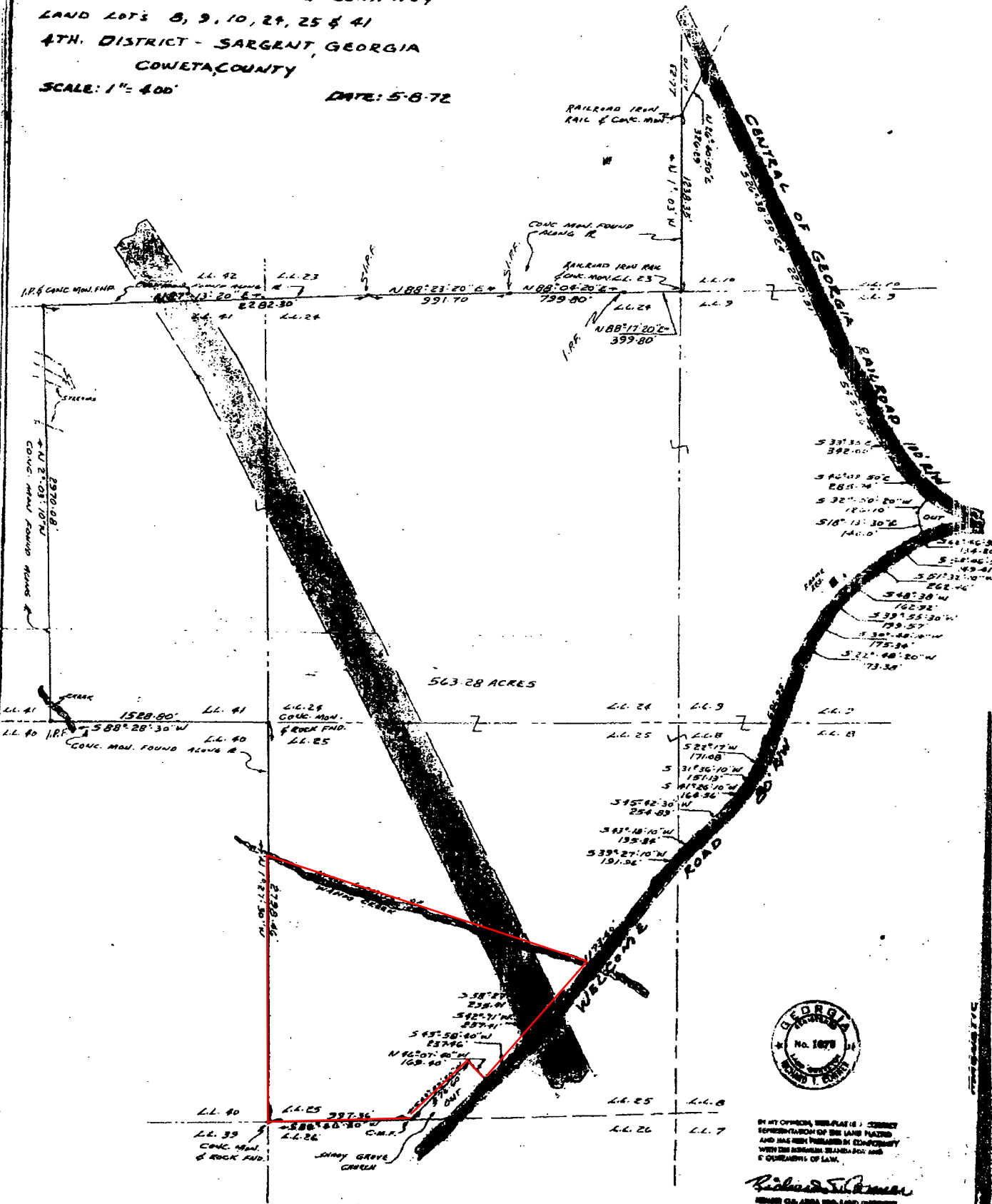


BIBB MANUFACTURING COMPANY
LAND LOTS 8, 9, 10, 24, 25 & 41
4TH. DISTRICT - SARGENT, GEORGIA
COWETA COUNTY

SCALE: 1" = 400'

DATE: 5-8-72



IN MY OFFICE, THE PLAT IS CORRECT
 REPRESENTATION OF THE LAND PLAT
 AND HAS BEEN FILED IN CONFORMITY
 WITH THE GEORGIA BLENDED ACT AND
 REQUIREMENTS OF LAW.

Richard S. Killorin
 SENIOR GEORGIA SURVEYOR

NOTE: BEARINGS ARE GIVEN BY MAGNETIC OBSERVATION WITHOUT CORRECTIONS