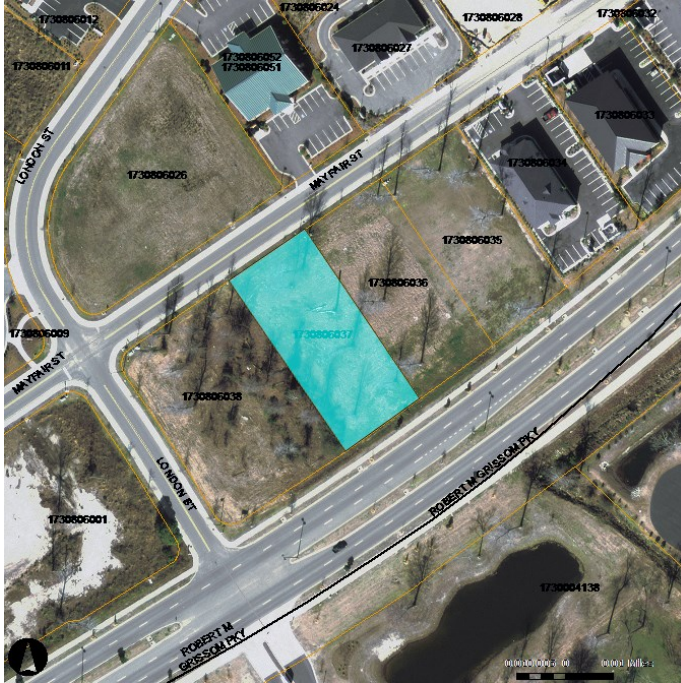


"Serving the Grand Strand since 1982"



Grissom Parkway-Lot 6

Location:

Grissom Parkway, Myrtle Beach, SC

Zoning:

- Commercial Sales

Description:

- +/- 0.52 acres
- Located between 38th and 44th Avenue North
- Horry County TMS# 173-08-06-037

Price: \$299,000.00

Contact Us:

843-449-0441

info@wacclt.com

