

Kit Carson County Dryland & CRP

New Price:
\$702,000
\$2,600 per acre



Township 10 South, Range 43 West
North 1/2 less tracts Section 13

LISTING #25026



call me today!

ROBBIE KING, ASSOCIATE BROKER

RKING@RXL.LAND

Office: 719-346-5420 | Mobile: 719-340-3720

1510 Rose Avenue | Burlington, CO 80807

Licensed in Colorado & Kansas

Your Local Real Estate Agent

Specializing in Residential and Farm/Ranch Land

Call to List your Property Today!



www.rockingxland.com

Where a Handshake Still Means Something!

NOTICE * BROKER HAS GATHERED INFORMATION FROM SOURCES DEEM RELIABLE. ALTHOUGH BROKER MAKES NO WARRANTIES EXPRESSED OR IMPLIED. BROKER SHALL BE REPRESENTING AS A TRANSACTION BROKER. VIEW ADDITIONAL INFORMATION AND PROPERTIES AT WWW.ROCKINGXLAND.COM

Features

- 273± Assessed Acres
- 271.87 Dryland & CRP Acres
- 195.31± Cropland Acres
- 67.73± CRP Acres - \$2,583 annual payment, expires 2031
- Current tenant has rights to all growing crops
- 100% of owned mineral rights reserved by seller.
- 2024 taxes: \$1,019.00
- Located southeast of Burlington, CO
- Accessible on County Road 55 & L



Call me today!

ROBBIE KING, ASSOCIATE BROKER

RKING@RXL.LAND

Office: 719-346-5420 | Mobile: 719-340-3720

1510 Rose Avenue | Burlington, CO 80807

Licensed in Colorado & Kansas

Your Local Real Estate Agent

Specializing in Residential and Farm/Ranch Land

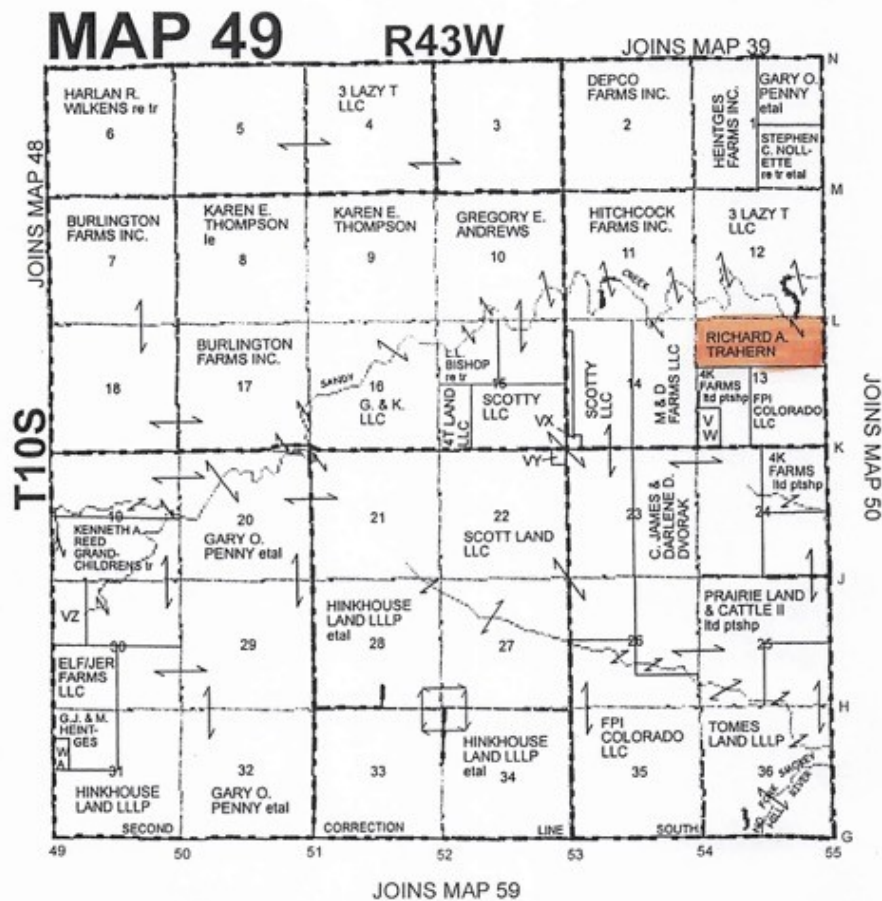
Call to List your Property Today!



www.rockingxland.com

Where a Handshake Still Means Something!

NOTICE * BROKER HAS GATHERED INFORMATION FROM SOURCES DEEM RELIABLE. ALTHOUGH BROKER MAKES NO WARRANTIES EXPRESSED OR IMPLIED. BROKER SHALL BE REPRESENTING AS A TRANSACTION BROKER. VIEW ADDITIONAL INFORMATION AND PROPERTIES AT WWW.ROCKINGXLAND.COM



call me today!

ROBBIE KING, ASSOCIATE BROKER

RKING@RXL.LAND

Office: 719-346-5420 | Mobile: 719-340-3720

1510 Rose Avenue | Burlington, CO 80807

Licensed in Colorado & Kansas

Your Local Real Estate Agent

Specializing in Residential and Farm/Ranch Land

Call to List your Property Today!



www.rockingxland.com

Where a Handshake Still Means Something!

NOTICE * BROKER HAS GATHERED INFORMATION FROM SOURCES DEEM RELIABLE. ALTHOUGH BROKER MAKES NO WARRANTIES EXPRESSED OR IMPLIED. BROKER SHALL BE REPRESENTING AS A TRANSACTION BROKER. VIEW ADDITIONAL INFORMATION AND PROPERTIES AT WWW.ROCKINGXLAND.COM



United States
Department of
Agriculture

Kit Carson County, Colorado



Common Land Unit
 Non-cropland
 Cropland
 Tract Boundary
 PLSS

Wetland Determination Identifiers
 Restricted Use
 Limited Restrictions
 Exempt from Conservation Compliance Provisions

Tract Cropland Total: 263.04 acres

2025 Program Year

Map Created May 02, 2025

Farm 7636

Tract 15644

13 10S 43W

United States Department of Agriculture (USDA) Farm Service Agency (FSA) maps are for FSA Program administration only. This map does not represent a legal survey or reflect actual ownership; rather it depicts the information provided directly from the producer and/or National Agricultural Imagery Program (NAIP) imagery. The producer accepts the data 'as is' and assumes all risks associated with its use. USDA-FSA assumes no responsibility for actual or consequential damage incurred as a result of any user's reliance on this data outside FSA Programs. Wetland identifiers do not represent the size, shape, or specific determination of the area. Refer to your original determination (CPA-025 and attached maps) for exact boundaries and determinations or contact USDA Natural Resources Conservation Service (NRCS).



call me today!

ROBBIE KING, ASSOCIATE BROKER

RKING@RXL.LAND

Office: 719-346-5420 | Mobile: 719-340-3720

1510 Rose Avenue | Burlington, CO 80807

Licensed in Colorado & Kansas

Your Local Real Estate Agent

Specializing in Residential and Farm/Ranch Land

Call to List your Property Today!

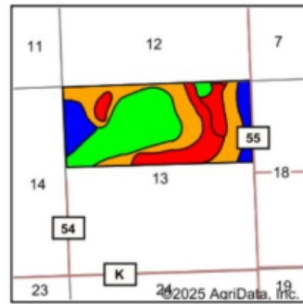
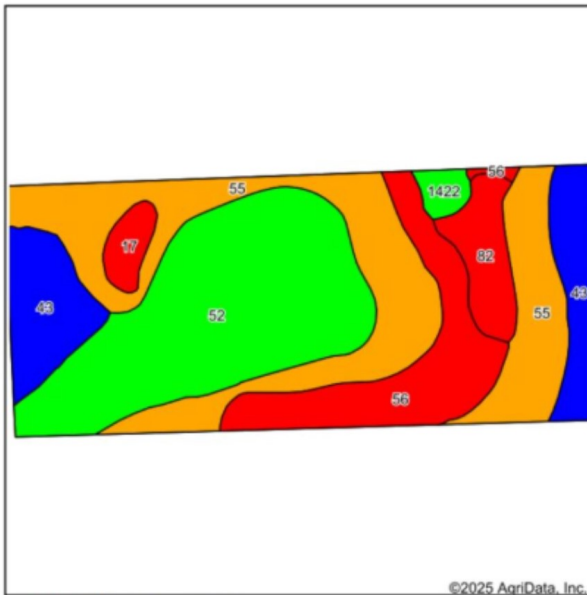


www.rockingxland.com

Where a Handshake Still Means Something!

NOTICE * BROKER HAS GATHERED INFORMATION FROM SOURCES DEEM RELIABLE. ALTHOUGH BROKER MAKES NO WARRANTIES EXPRESSED OR IMPLIED. BROKER SHALL BE REPRESENTING AS A TRANSACTION BROKER. VIEW ADDITIONAL INFORMATION AND PROPERTIES AT WWW.ROCKINGXLAND.COM

Soils Map



State: **Colorado**
 County: **Kit Carson**
 Location: **13-10S-43W**
 Township: **Burlington**
 Acres: **272.64**
 Date: **5/21/2025**



Maps Provided By: **surety**
 CUSTOMER ONLINE MAPPING
 © AgriData, Inc. 2023 www.AgriData.com



Soils data provided by USDA and NRCS.

Area Symbol: CO063, Soil Area Version: 20

Code	Soil Description	Acres	Percent of field	Non-Irr Class Legend	Non-Irr Class *c	Corn Irrigated Bu	Grain sorghum Bu	Grain sorghum Irrigated Bu
55	Norka-Colby silt loams, 3 to 5 percent slopes	88.02	32.4%		Ive			
52	Norka silt loam, 0 to 3 percent slopes	87.00	31.9%		IIie	160		
56	Norka-Colby silt loams, 5 to 15 percent slopes	37.20	13.6%		Vie			
43	Kuma-Keith silt loams, 0 to 2 percent slopes	36.64	13.4%		Iic	175	38	100
82	Stoneham-Kimst-Fort Collins loams, 5 to 15 percent slopes	13.98	5.1%		Vie			
17	Colby silt loam, 6 to 15 percent slopes	5.80	2.1%		Vie			
1422	Goshen silt loam, rarely flooded	4.00	1.5%		IIic			
Weighted Average					3.82	74.6	5.1	13.4

*c: Using Capabilities Class Dominant Condition Aggregation Method

Soils data provided by USDA and NRCS.



call me today!

ROBBIE KING, ASSOCIATE BROKER

RKING@RXL.LAND

Office: 719-346-5420 | Mobile: 719-340-3720

1510 Rose Avenue | Burlington, CO 80807

Licensed in Colorado & Kansas

Your Local Real Estate Agent

Specializing in Residential and Farm/Ranch Land

Call to List your Property Today!

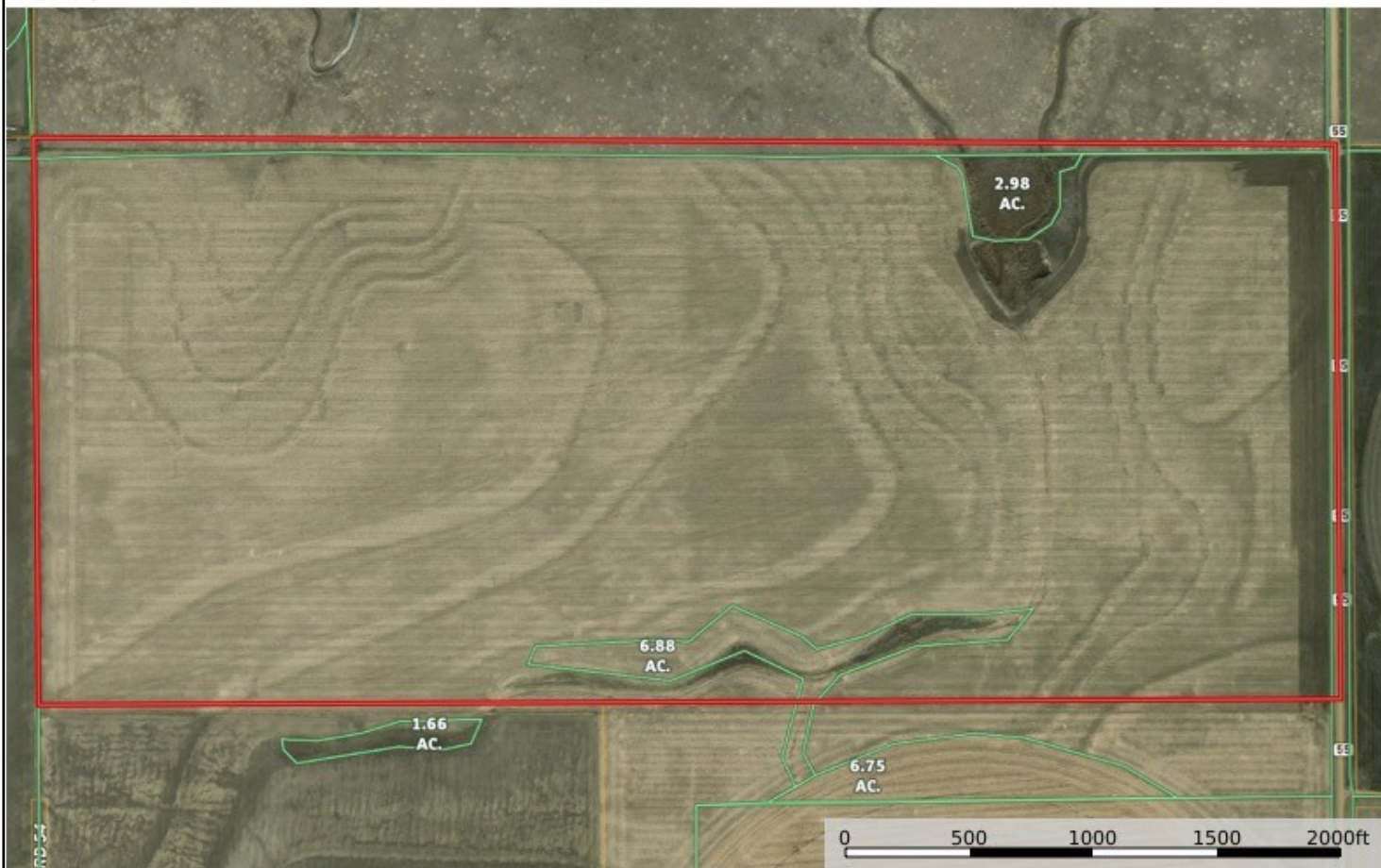


www.rockingxland.com

Where a Handshake Still Means Something!

NOTICE * BROKER HAS GATHERED INFORMATION FROM SOURCES DEEM RELIABLE. ALTHOUGH BROKER MAKES NO WARRANTIES EXPRESSED OR IMPLIED. BROKER SHALL BE REPRESENTING AS A TRANSACTION BROKER. VIEW ADDITIONAL INFORMATION AND PROPERTIES AT WWW.ROCKINGXLAND.COM

Trahern Land
Colorado, AC +/-



Boundary

Robbie King
P: 7193403720

www.rockingxland.com

1510 Rose Avenue



The information contained herein was obtained from sources deemed to be reliable. Land id™ Services makes no warranties or guarantees as to the completeness or accuracy thereof.



call me today!

ROBBIE KING, ASSOCIATE BROKER

RKING@RXL.LAND

Office: 719-346-5420 | Mobile: 719-340-3720

1510 Rose Avenue | Burlington, CO 80807

Licensed in Colorado & Kansas

Your Local Real Estate Agent

Specializing in Residential and Farm/Ranch Land

Call to List your Property Today!



www.rockingxland.com

Where a Handshake Still Means Something!

NOTICE * BROKER HAS GATHERED INFORMATION FROM SOURCES DEEM RELIABLE. ALTHOUGH BROKER MAKES NO WARRANTIES EXPRESSED OR IMPLIED. BROKER SHALL BE REPRESENTING AS A TRANSACTION BROKER. VIEW ADDITIONAL INFORMATION AND PROPERTIES AT WWW.ROCKINGXLAND.COM