

SECOND GENERATION RESTAURANT SPACE

6110 Oak Street
Eastman, GA 31023



Summary

Area Info

Photos

Aerial

Site Map



CONTACT

Patty Burns, CCIM, ALC

478-746-9421 Office
478-951-5100 Cell
patty@fickling.com
www.georgiacommercialrealestate.net

Trip Wilhoit, CCIM, ALC

478-746-9421 Office
478-960-4080 Cell
trip@fickling.com

Jonathan Schuemann

478-746-9421 Office
561-676-4633 Cell
jonathan@fickling.com



577 Mulberry St, Suite 1100
Macon, GA 31201
478.746.9421 Office
<http://commercial.fickling.com>

This information is from resources deemed to be reliable and is subject to change without notice. No warranties or guarantees for accuracy are made by Fickling and Company.

SECOND GENERATION RESTAURANT SPACE

6110 Oak Street
Eastman, GA 31023



Summary

Area Info

Photos

Aerial

Site Map

PROPERTY INFORMATION

BUILDING

Property Address:

6110 Oak Street
Eastman, GA 31023

County:

Dodge

Building Size:

1,862 SF

Year Built:

2022

Taxes:

\$5,302.17 (2025 est.)

Frontage:

±240' - Oak Street
±240' - Main Street

Utilities:

All Available

Parking:

23 spaces, including 2 handicap
spaces

Traffic Count:

Oak Street - 8,840 VPD

SITE

Site Size:

2.71 Acres

Parcel ID:

E17 027

Zoning:

B-1

SALE PRICE:
\$1,200,000.00

Demographics 2025	1 Mile	3 Miles	5 Miles
Population	2,489	8,291	10,438
Avg HH Income	\$80,778	\$72,840	\$72,981
Median Age	40.7	42.0	42.1

CONTACT

Patty Burns, CCIM, ALC
478-746-9421 Office
478-951-5100 Cell
patty@fickling.com
www.georgiacommercialrealestate.net

Trip Wilhoit, CCIM, ALC
478-746-9421 Office
478-960-4080 Cell
trip@fickling.com

Jonathan Schuemann
478-746-9421 Office
561-676-4633 Cell
jonathan@fickling.com



577 Mulberry St, Suite 1100
Macon, GA 31201
478.746.9421 Office
<https://commercial.fickling.com>

SECOND GENERATION RESTAURANT SPACE

6110 Oak Street
Eastman, GA 31023



Summary

Area Info

Photos

Aerial

Site Map

Building is a 1,862 SF former Popeyes Louisiana Chicken. Built in 2022, this location has a double drive through, drive through window, interior dining area with table and booth style seating options, soda fountain, kitchen, and walk-in cooler.

Neighbors in the area include Dodge County Middle & High Schools, Dollar General, Shark's Fish & Chicken Chicago Style, Captain D's, Farmer's Home Furniture, World Finance, Chas Mar Home & Garden, Harvey's, Cricket, Zaxby's, Badcock & More, and many other retail and restaurant establishments.



CONTACT

Patty Burns, CCIM, ALC

478-746-9421 Office

478-951-5100 Cell

patty@fickling.com

www.georgiacommercialrealestate.net

Trip Wilhoit, CCIM, ALC

478-746-9421 Office

478-960-4080 Cell

trip@fickling.com

Jonathan Schuemann

478-746-9421 Office

561-676-4633 Cell

jonathan@fickling.com



577 Mulberry St, Suite 1100

Macon, GA 31201

478.746.9421 Office

<https://commercial.fickling.com>

This information is from resources deemed to be reliable and is subject to change without notice. No warranties or guarantees for accuracy are made by Fickling and Company.

SECOND GENERATION RESTAURANT SPACE

6110 Oak Street
Eastman, GA 31023



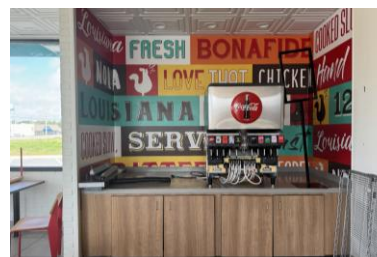
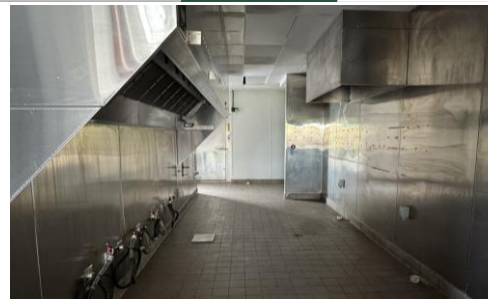
Summary

Area Info

Photos

Aerial

Site Map



CONTACT

Patty Burns, CCIM, ALC
478-746-9421 Office
478-951-5100 Cell
patty@fickling.com
www.georgiacommercialrealestate.net

Trip Wilhoit, CCIM, ALC
478-746-9421 Office
478-960-4080 Cell
trip@fickling.com

Jonathan Schuemann
478-746-9421 Office
561-676-4633 Cell
jonathan@fickling.com



577 Mulberry St, Suite 1100
Macon, GA 31201
478.746.9421 Office
https://commercial.fickling.com

This information is from resources deemed to be reliable and is subject to change without notice. No warranties or guarantees for accuracy are made by Fickling and Company.

SECOND GENERATION RESTAURANT SPACE

6110 Oak Street
Eastman, GA 31023



Summary

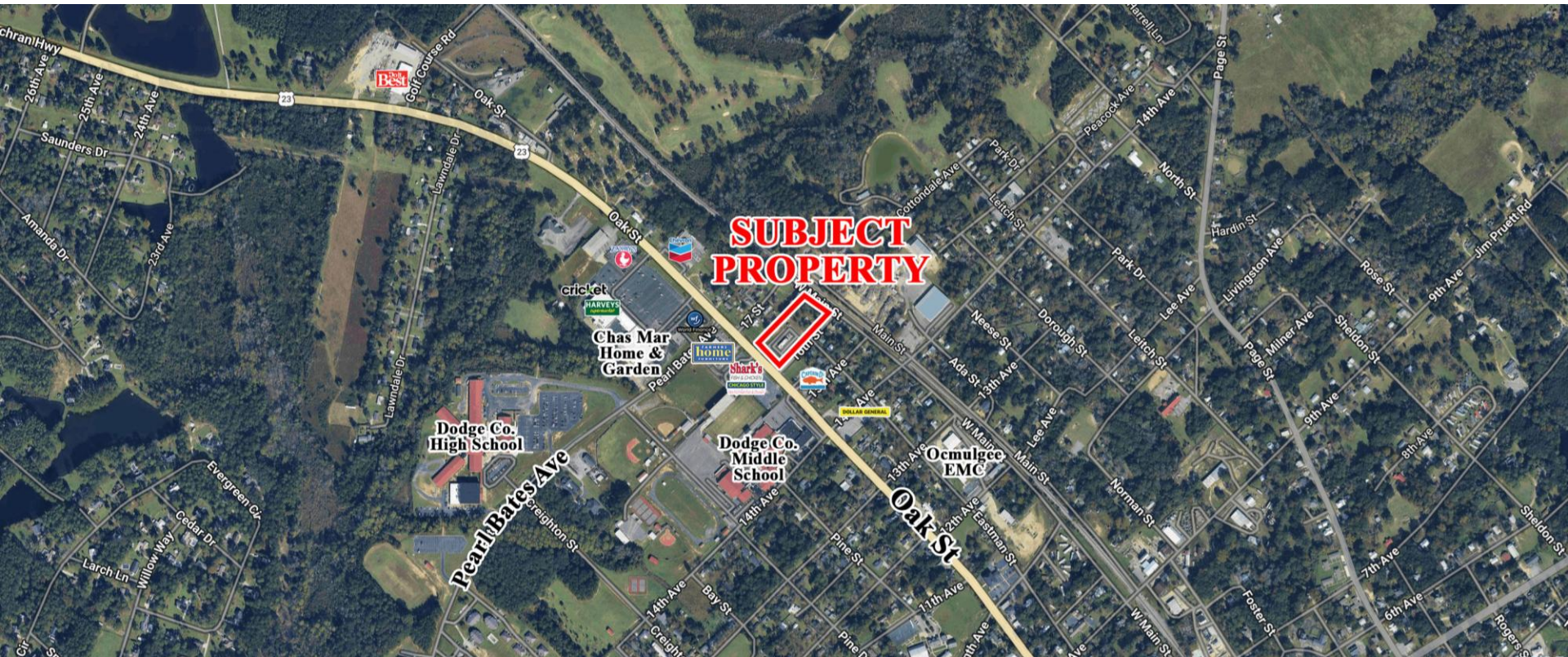
Area Info

Photos

Aerial

Site Map

AERIAL



CONTACT

Patty Burns, CCIM, ALC
478-746-9421 Office
478-951-5100 Cell
patty@fickling.com
www.georgiacommercialrealestate.net

Trip Wilhoit, CCIM, ALC
478-746-9421 Office
478-960-4080 Cell
trip@fickling.com

Jonathan Schuemann
478-746-9421 Office
561-676-4633 Cell
jonathan@fickling.com



577 Mulberry St, Suite 1100
Macon, GA 31201
478.746.9421 Office
<https://commercial.fickling.com>

This information is from resources deemed to be reliable and is subject to change without notice. No warranties or guarantees for accuracy are made by Fickling and Company.

SECOND GENERATION RESTAURANT SPACE

6110 Oak Street
Eastman, GA 31023



Summary

Area Info

Photos

Aerial

Site Map

SITE MAP



CONTACT

Patty Burns, CCIM, ALC
478-746-9421 Office
478-951-5100 Cell
patty@fickling.com
www.georgiacommercialrealestate.net

Trip Wilhoit, CCIM, ALC
478-746-9421 Office
478-960-4080 Cell
trip@fickling.com

Jonathan Schuemann
478-746-9421 Office
561-676-4633 Cell
jonathan@fickling.com



577 Mulberry St, Suite 1100
Macon, GA 31201
478.746.9421 Office
https://commercial.fickling.com

This information is from resources deemed to be reliable and is subject to change without notice. No warranties or guarantees for accuracy are made by Fickling and Company.