

Far Sale

HIGHLAND COUNTY



37.4 +/- Acres

2 ACRES VACANT LAND | MARYS LANE

6.84 ACRES VACANT LAND | ELIZABETH DRIVE

28.61 ACRES VACANT LAND | MARYS LANE



WILSON NATIONAL LLC
A REAL ESTATE & AUCTION GROUP



www.wilnat.com

800-450-3440

2+/- Acres

\$49,500



DIRECTIONS: From E. Main Street (Rt. 50) turn onto Marys Lane, go to end of Marys Lane, property on the right.

2 ACRES VACANT LAND

Predominately wooded with gently rolling terrain. All located within city limits with city utilities available. Where pavements stops on Marys Lane, the gravel drive will provide an easement to property.



6.8+/- Acres



\$125,000

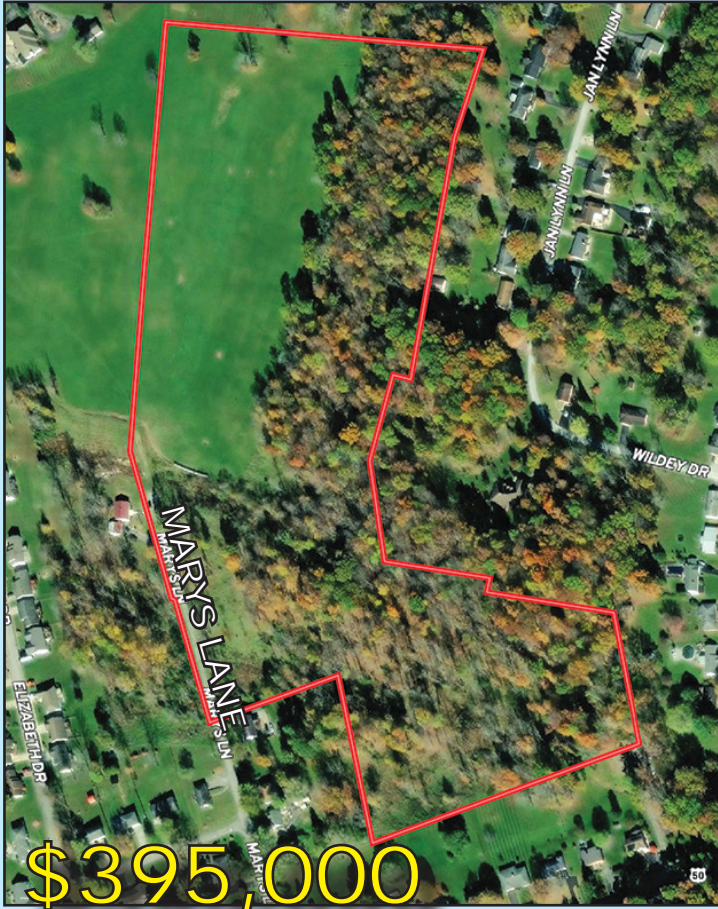
DIRECTIONS: From E. Main Street (Rt. 50) turn onto Marys Lane to Elizabeth Drive. Property at the end of Elizabeth Drive.

6.8 ACRES OPEN LAND

Within Hillsboro city limits. Gently rolling topography. It's like living in the country with convenience of being in town. City utilities available.



28.6+/- Acres



28.6 ACRES OPEN LAND & WOODS

Gently rolling terrain. Approx. 10 acres located within the city and 18 acres in the county. City utilities available unless you build on the county. A picturesque property in an excellent location. More land available contiguous to this property. Where pavement stops on Marys Lane, the gravel drive will provide an easement to the property.

DIRECTIONS: From E. Main Street (Rt. 50) turn onto Marys Lane, go to end of Marys Lane, property on left.



Mark & Brandon Wilson, Brokers



WILSON NATIONAL LLC
A REAL ESTATE & AUCTION GROUP

Call Mark Wilson 937-402-1961
or Brandon Wilson 937-763-1993



www.wilnat.com
800-450-3440

