

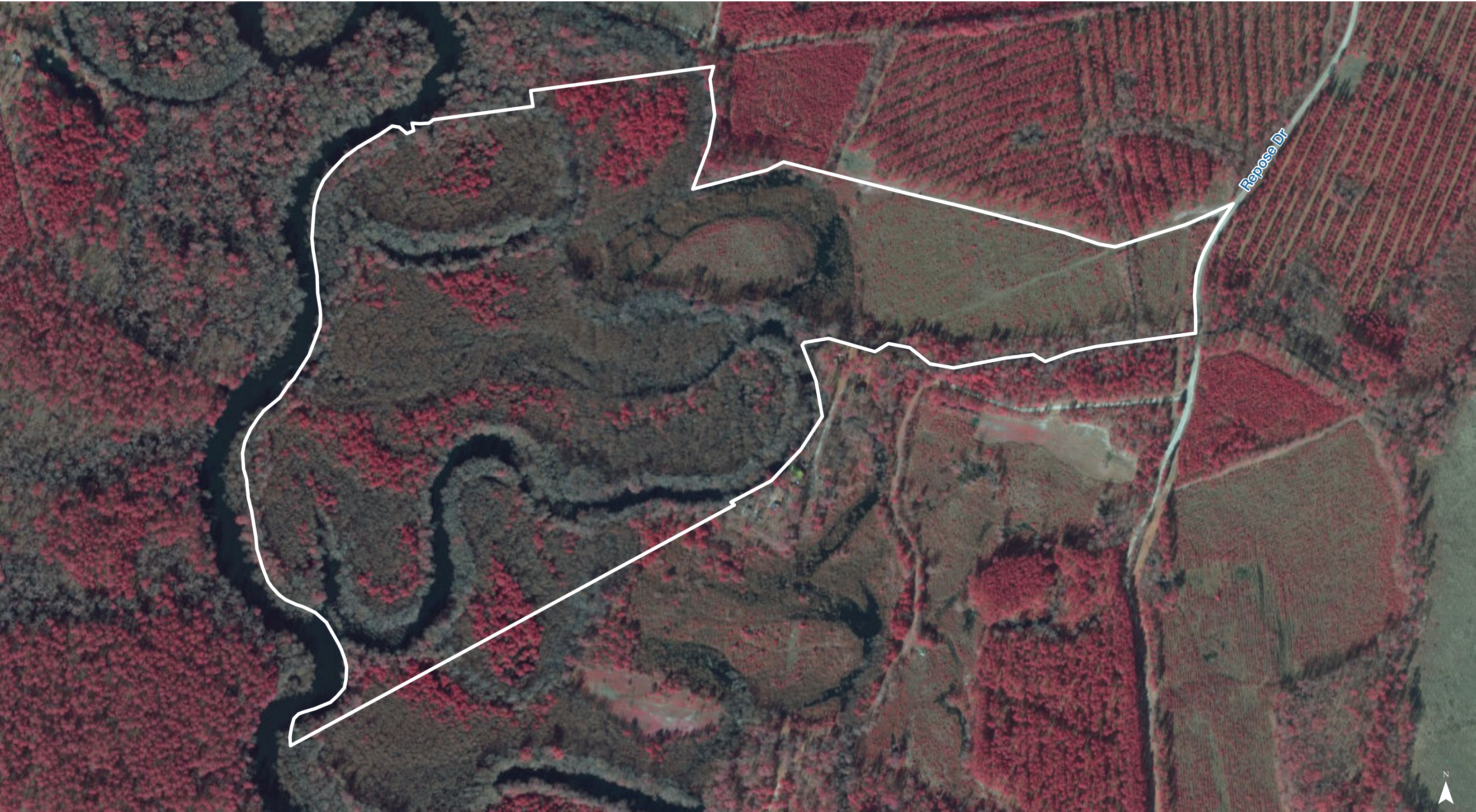
Map Updated: Monday, December 15, 2025. This information submitted is not guaranteed. Although obtained from reliable sources, all information should be confirmed prior to use or reliance upon the information. This document may not be reproduced in whole or in part without the express written consent of NAI Columbia.





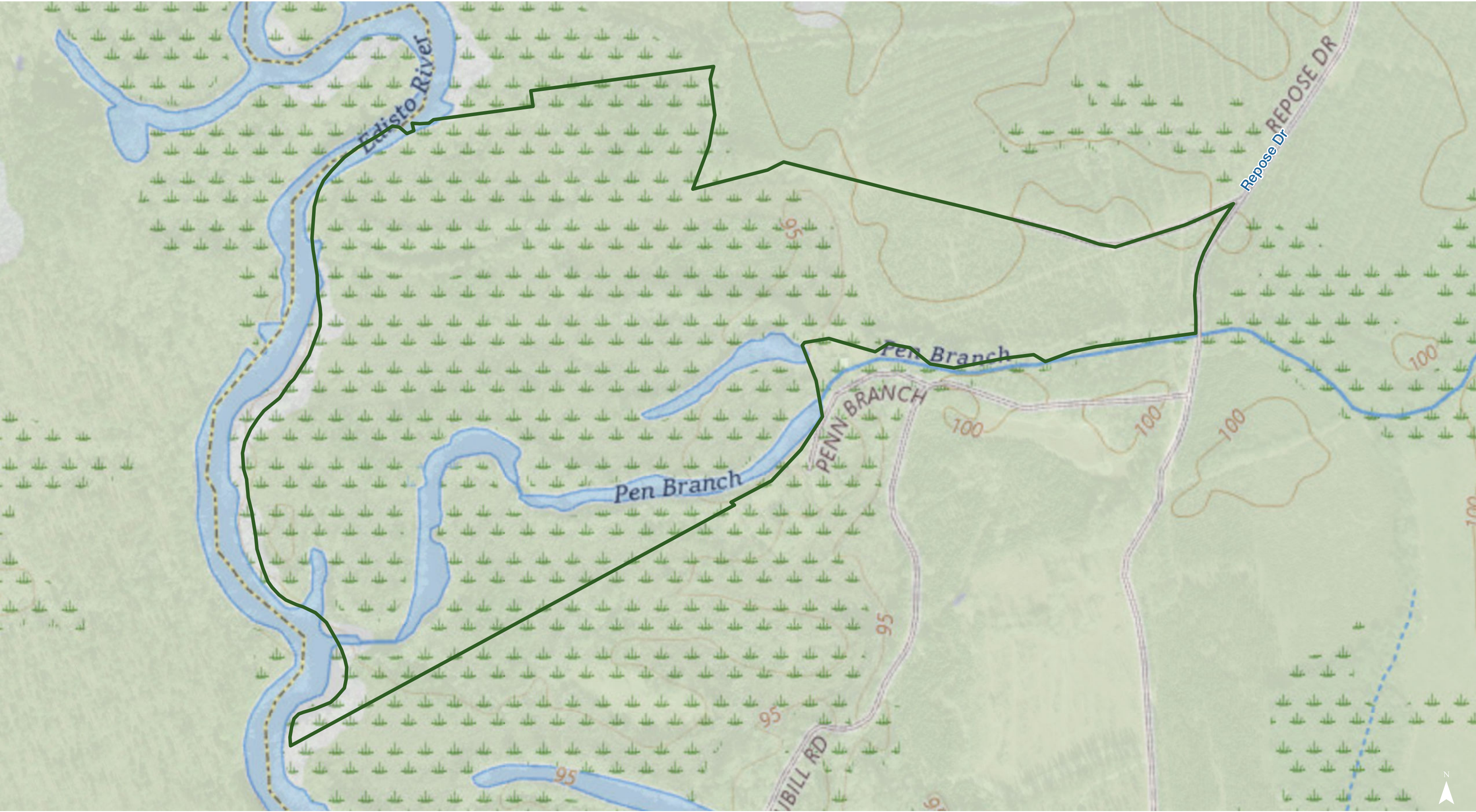
Map Updated: Friday, December 12, 2025. This information submitted is not guaranteed. Although obtained from reliable sources, all information should be confirmed prior to use or reliance upon the information. This document may not be reproduced in whole or in part without the express written consent of NAI Columbia.





Map Updated: Monday, December 15, 2025. This information submitted is not guaranteed. Although obtained from reliable sources, all information should be confirmed prior to use or reliance upon the information. This document may not be reproduced in whole or in part without the express written consent of NAI Columbia.





Map Updated: Monday, December 15, 2025. This information submitted is not guaranteed. Although obtained from reliable sources, all information should be confirmed prior to use or reliance upon the information. This document may not be reproduced in whole or in part without the express written consent of NAI Columbia.








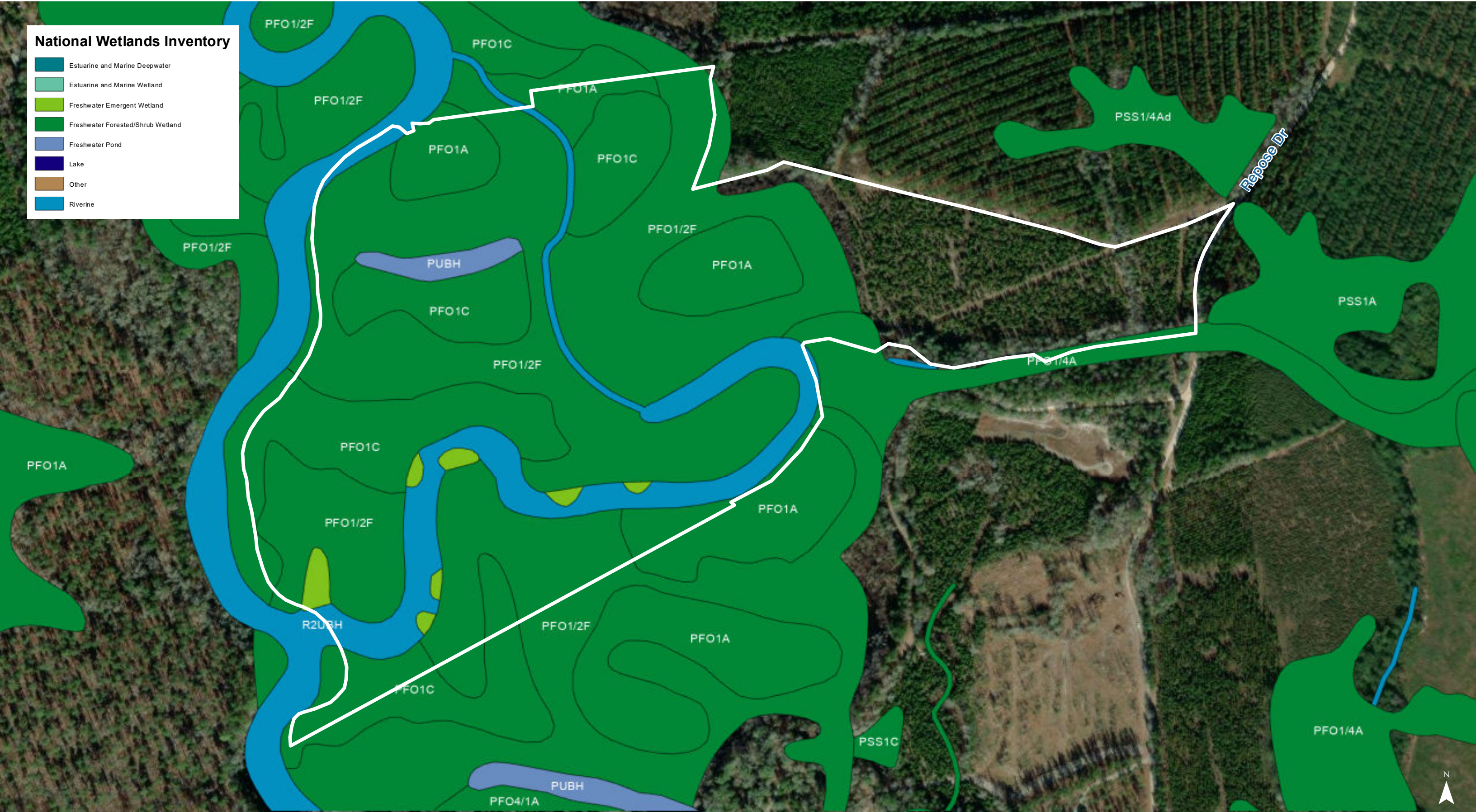


Map Updated: Monday, December 15, 2025. This information submitted is not guaranteed. Although obtained from reliable sources, all information should be confirmed prior to use or reliance upon the information. This document may not be reproduced in whole or in part without the express written consent of NAI Columbia.



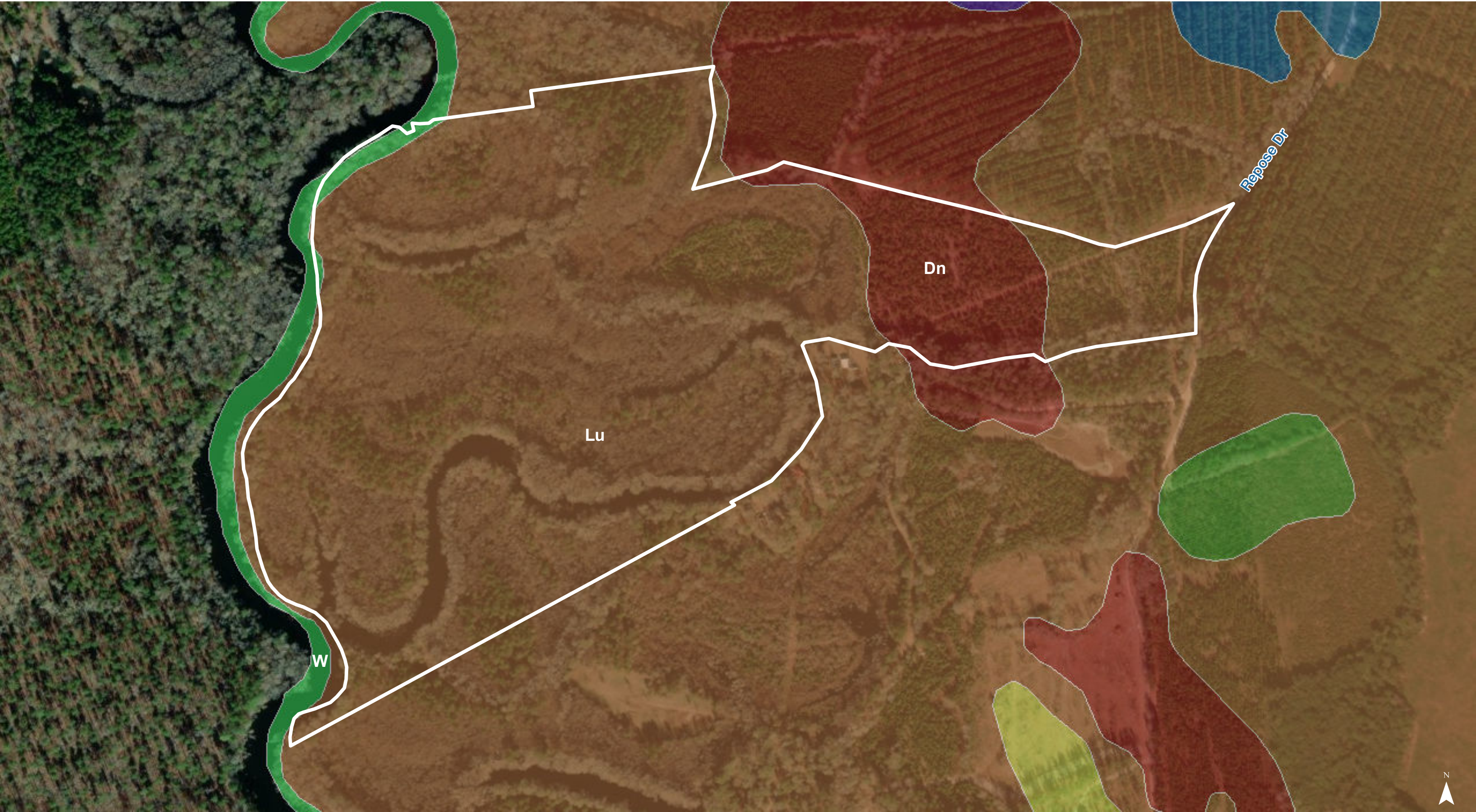
National Wetlands Inventory

	Estuarine and Marine Deepwater
	Estuarine and Marine Wetland
	Freshwater Emergent Wetland
	Freshwater Forested/Shrub Wetland
	Freshwater Pond
	Lake
	Other
	Riverine



Map Updated: Monday, December 15, 2025. This information submitted is not guaranteed. Although obtained from reliable sources, all information should be confirmed prior to use or reliance upon the information. This document may not be reproduced in whole or in part without the express written consent of NAI Columbia.





Map Updated: Monday, December 15, 2025. This information submitted is not guaranteed. Although obtained from reliable sources, all information should be confirmed prior to use or reliance upon the information. This document may not be reproduced in whole or in part without the express written consent of NAI Columbia.



Map Unit Description (Brief, Generated)	
Orangeburg County, South Carolina	
[Minor map unit components are excluded from this report]	
Map unit:	Dn - Dunbar sandy loam
Component:	Dunbar (96%)
<i>The Dunbar component makes up 96 percent of the map unit. Slopes are 0 to 2 percent. This component is on marine terraces, coastal plains. The parent material consists of clayey marine deposits. Depth to a root restrictive layer is greater than 60 inches. The natural drainage class is somewhat poorly drained. Water movement in the most restrictive layer is moderately high. Available water to a depth of 60 inches (or restricted depth) is high. Shrink-swell potential is moderate. This soil is not flooded. It is not ponded. A seasonal zone of water saturation is at 12 inches during January, February, March, April, May, November, December. Organic matter content in the surface horizon is about 3 percent. This component is in the F153AY045NC Moist Clay Rises and Flats ecological site. Nonirrigated land capability classification is 2w. This soil does not meet hydric criteria.</i>	
Map unit:	Lu - Lumbee loamy sand, frequently flooded
Component:	Lumbee (90%)
<i>The Lumbee component makes up 90 percent of the map unit. Slopes are 0 to 2 percent. This component is on flood plains, coastal plains. The parent material consists of loamy marine deposits. Depth to a root restrictive layer is greater than 60 inches. The natural drainage class is poorly drained. Water movement in the most restrictive layer is moderately high. Available water to a depth of 60 inches (or restricted depth) is low. Shrink-swell potential is low. This soil is frequently flooded. It is not ponded. A seasonal zone of water saturation is at 9 inches during January, February, March, April, November, December. Organic matter content in the surface horizon is about 3 percent. This component is in the F153AY060NC Wet Loamy Flats and Depressions ecological site. Nonirrigated land capability classification is 6w. This soil meets hydric criteria.</i>	
Map unit:	W - Water
Component:	Water (100%)
<i>Generated brief soil descriptions are created for major soil components. The Water is a miscellaneous area.</i>	