



8820 BOWDEN ROAD
CRENSHAW COUNTY, AL
\$175,000

COMMERCIAL OPPORTUNITY



SMALLTOWN
HUNTING PROPERTIES
& REAL ESTATE SM

PROPERTY LINES ARE APPROXIMATE

OFFICE (334) 931-0090 | WWW.SMALLTOWNPROPERTIES.COM

8820 BOWDEN ROAD

PROPERTY PROFILE

LOCATION:

- 8820 Bowden Road
Lapine, AL 36046
- Crenshaw County
- 6± Miles NW of Highland Home
- 23± Miles NW of Luverne
- 31± Miles SW of Montgomery

COORDINATES:

- 31.970557, -86.391346

PROPERTY USE:

- Auto Shop
- Residential
- Investment

PROPERTY INFORMATION:

- 0.79± Acres
- 2,400± SqFt Auto Shop
 - Roll-Up Doors
 - Security Fencing
 - 1 Bedroom/1 Bath
Upstairs Apartment
 - Office
 - Waiting/Break Room
 - Restroom
 - Equipment Included
- Frontage on Bowden Road

TAX INFORMATION:

- \$354.92 (2024)



SMALLTOWN
HUNTING PROPERTIES
& REAL ESTATESM

JASON PERDUE

LAND SPECIALIST

C: 334-304-2711

O: 334-931-0090

jperdue@smalltownproperties.com

2121 5th Street, Ste 206 - Meridian, MS 39301

smalltownproperties.com

Information is believed to be accurate but not guaranteed.

WELCOME TO 8820 BOWDEN ROAD

WELCOME TO 8820 BOWDEN ROAD IN LAPINE, ALABAMA. Situated on 0.79± acres in Crenshaw County, a well-equipped 2,400± square foot automobile shop is fully secured with chain-link fencing topped with barbed wire and offers ample yard space for parking or storage.

The shop features four large roll-up doors, a functional office, a waiting/break room, and a restroom, providing an efficient layout for daily operations. The upstairs level includes a one-bedroom, one-bathroom apartment—ideal for on-site living or rental income.

Included with the sale are three heavy-duty automotive lifts and additional equipment, making this property a turnkey opportunity suitable for automotive repair, service, or similar commercial use.

Contact Jason Perdue today to schedule a private showing and experience #TheSmallTownWay.



SMALLTOWN
HUNTING PROPERTIES
& REAL ESTATESM

JASON PERDUE

LAND SPECIALIST

C: 334-304-2711

O: 334-931-0090

jperdue@smalltownproperties.com

2121 5th Street, Ste 206 - Meridian, MS 39301

smalltownproperties.com

Information is believed to be accurate but not guaranteed.

8820 BOWDEN ROAD

LAPINE

CRENSHAW COUNTY, ALABAMA



PROPERTY LINES ARE APPROXIMATE



SMALLTOWN
HUNTING PROPERTIES
& REAL ESTATESM

JASON PERDUE

LAND SPECIALIST

C: 334-304-2711

O: 334-931-0090

jperdue@smalltownproperties.com

2121 5th Street, Ste 206 - Meridian, MS 39301

smalltownproperties.com

Information is believed to be accurate but not guaranteed.



SMALLTOWN
HUNTING PROPERTIES
& REAL ESTATESM

JASON PERDUE

LAND SPECIALIST

C: 334-304-2711

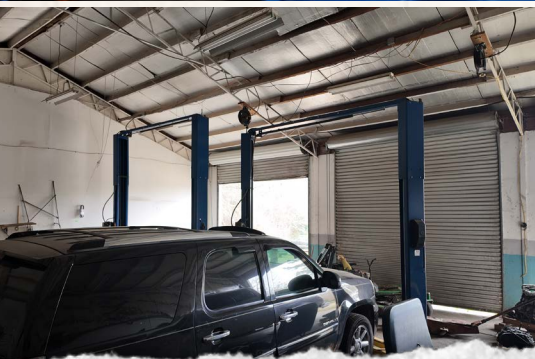
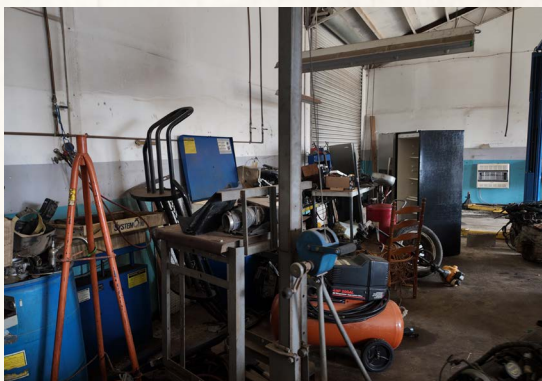
O: 334-931-0090

jperdue@smalltownproperties.com

2121 5th Street, Ste 206 - Meridian, MS 39301

smalltownproperties.com

Information is believed to be accurate but not guaranteed.



SMALLTOWN

HUNTING PROPERTIES
& REAL ESTATESM

JASON PERDUE

LAND SPECIALIST

C: 334-304-2711

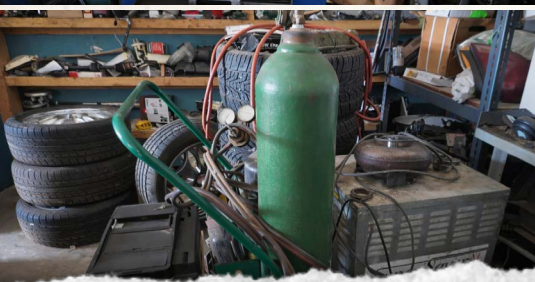
O: 334-931-0090

jperdue@smalltownproperties.com

2121 5th Street, Ste 206 - Meridian, MS 39301

smalltownproperties.com

Information is believed to be accurate but not guaranteed.



SMALLTOWN
HUNTING PROPERTIES
& REAL ESTATESM

JASON PERDUE

LAND SPECIALIST

C: 334-304-2711

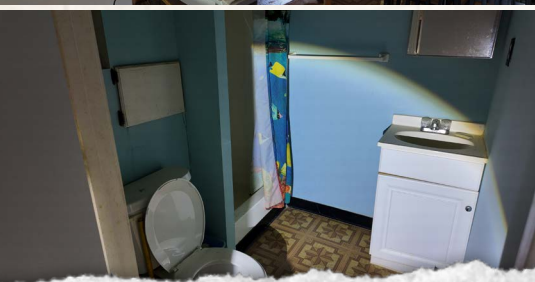
O: 334-931-0090

jperdue@smalltownproperties.com

2121 5th Street, Ste 206 - Meridian, MS 39301

smalltownproperties.com

Information is believed to be accurate but not guaranteed.



SMALLTOWN
HUNTING PROPERTIES
& REAL ESTATESM

JASON PERDUE

LAND SPECIALIST

C: 334-304-2711

O: 334-931-0090

jperdue@smalltownproperties.com

2121 5th Street, Ste 206 - Meridian, MS 39301

smalltownproperties.com

Information is believed to be accurate but not guaranteed.

8820 BOWDEN ROAD

LAPINE

CRENSHAW COUNTY, ALABAMA

land id. LINK



Directions From Montgomery, AL:
Travel on I-65 S for 7.6 miles. Take exit 164 to travel on US-31 S for 15 miles. Turn left onto AL-97 S and continue for 1.9 miles. Turn right onto Burgamy Swamp Road and proceed for 5.3 miles. Continue onto Bowden Road and the property will be on the right.

[LINK TO GOOGLE MAP DIRECTIONS](#)



SMALLTOWN
HUNTING PROPERTIES
& REAL ESTATESM

JASON PERDUE

LAND SPECIALIST

C: 334-304-2711

O: 334-931-0090

jperdue@smalltownproperties.com

2121 5th Street, Ste 206 - Meridian, MS 39301

smalltownproperties.com

Information is believed to be accurate but not guaranteed.