

3.19± ACRES
CRENSHAW COUNTY, AL
\$29,900



SMALLTOWN
HUNTING PROPERTIES
& REAL ESTATESM

OFFICE (334) 931-0090 | WWW.SMALLTOWNPROPERTIES.COM

THE CRENSHAW 3.19

PROPERTY PROFILE

LOCATION:

- Smyth Road
Luverne, AL 36049
- Crenshaw County
- 10± Miles NW of Luverne
- 15± Miles SE of Greenville
- 58± Miles S of Montgomery

PROPERTY INFORMATION:

- 3.19± Unrestricted Acres
- Paved & Dirt Road Frontage
- Multiple Access Points
- Utilities Available at the Road

COORDINATES:

- 31.743314, -86.415761

TAX INFORMATION:

- \$132.94 (2025)

For the Entire 25± Acre Parcel

PROPERTY USE:

- Potential Home/Cabin Site



SMALLTOWN
HUNTING PROPERTIES
& REAL ESTATESM

JASON PERDUE

LAND SPECIALIST

C: 334-304-2711

O: 334-931-0090

jperdue@smalltownproperties.com

2121 5th Street, Ste 206 - Meridian, MS 39301

smalltownproperties.com

Information is believed to be accurate but not guaranteed.

WELCOME TO THE CRENSHAW 3.19

WELCOME TO THE CRENSHAW 3.19, LOCATED AT THE CORNER OF GREENVILLE HIGHWAY AND SMYTH ROAD IN CRENSHAW COUNTY, ALABAMA. Conveniently located 10± miles from Luverne and 14± miles from Greenville, this 3.19± acre tract is unrestricted and offers a rural setting with paved road frontage, dirt road frontage, and multiple access points. Public water and power are available at the road, making the Crenshaw 3.19 a practical option for building a home or placing a mobile home. The corner location provides flexibility for layout and access while still maintaining a quiet country feel.

Contact Jason Perdue today to schedule a private showing and experience #TheSmallTownWay.



SMALLTOWN
HUNTING PROPERTIES
& REAL ESTATESM

JASON PERDUE

LAND SPECIALIST

C: 334-304-2711

O: 334-931-0090

jperdue@smalltownproperties.com

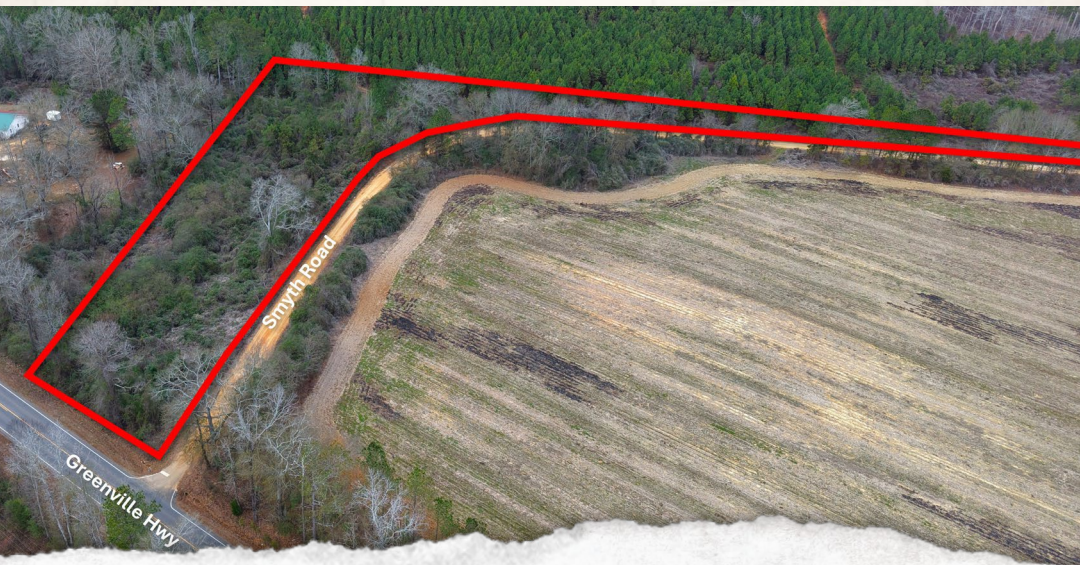
2121 5th Street, Ste 206 - Meridian, MS 39301

smalltownproperties.com

Information is believed to be accurate but not guaranteed.

3.19± ACRES

CRENSHAW COUNTY, ALABAMA



SMALLTOWN
HUNTING PROPERTIES
& REAL ESTATESM

JASON PERDUE

LAND SPECIALIST

C: 334-304-2711

O: 334-931-0090

jperdue@smalltownproperties.com

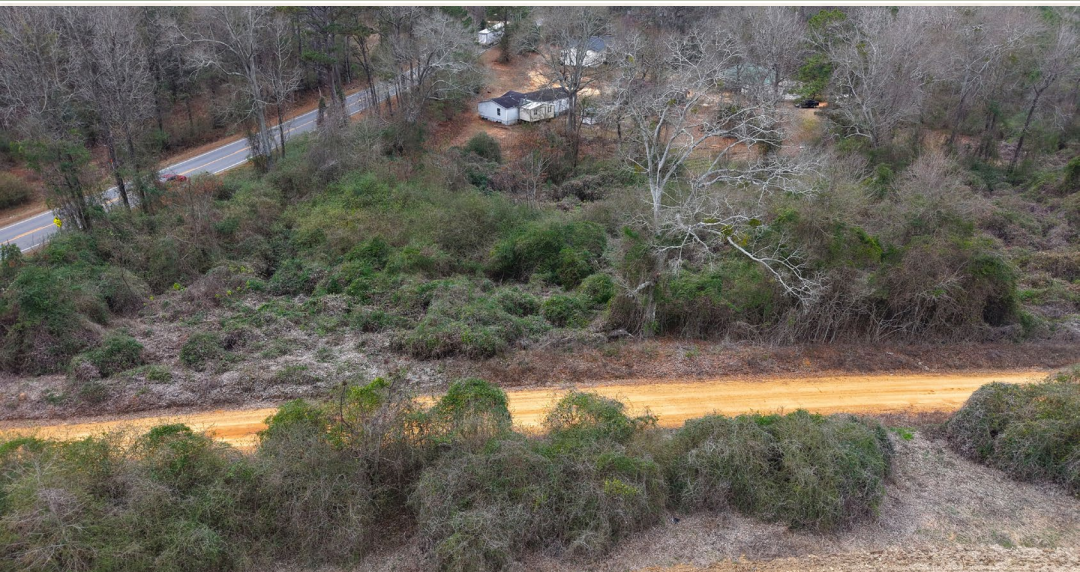
2121 5th Street, Ste 206 - Meridian, MS 39301

smalltownproperties.com

Information is believed to be accurate but not guaranteed.

3.19± ACRES

CRENSHAW COUNTY, ALABAMA



SMALLTOWN
HUNTING PROPERTIES
& REAL ESTATESM

JASON PERDUE

LAND SPECIALIST

C: 334-304-2711

O: 334-931-0090

jperdue@smalltownproperties.com

2121 5th Street, Ste 206 - Meridian, MS 39301

smalltownproperties.com

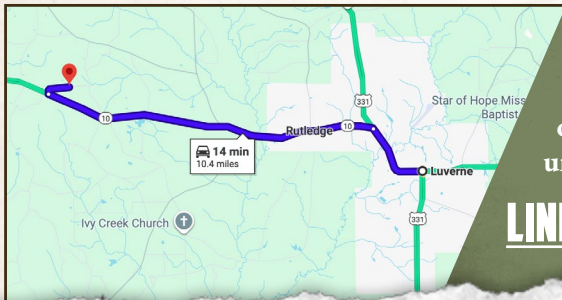
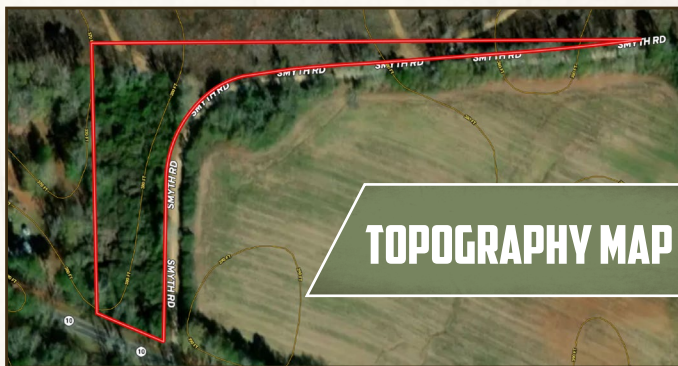
Information is believed to be accurate but not guaranteed.

3.19± ACRES

CRENSHAW COUNTY, ALABAMA



land id.
LINK



Directions From Luverne, AL: Travel on US-331 N for 1.8 miles. Turn left onto AL-10 W and continue for 8 miles until Smyth Road on the right.

LINK TO GOOGLE MAP DIRECTIONS



SMALLTOWN
HUNTING PROPERTIES
& REAL ESTATESM

JASON PERDUE

LAND SPECIALIST

C: 334-304-2711

O: 334-931-0090

jperdue@smalltownproperties.com

2121 5th Street, Ste 206 - Meridian, MS 39301

smalltownproperties.com

Information is believed to be accurate but not guaranteed.