



Sartain's Heritage
Properties, LLC.
www.sartainsheritage.com

Farm, Timber & Recreational Land Brokers

106 First Choice Dr Madison, MS 39110

www.SartainsHeritage.com

Property: The Valley Park Tract is a 314-acre haven of mature bottomland hardwoods located west of Highway 61 along Summerall Road in Issaquena County, Mississippi. This property offers a rich mosaic of habitat features, including a cypress and buck brush duck slough, four established food plots, and a UTV-accessible road system that enhances mobility and management. Surrounded by private hunting lands and productive croplands, the tract is ideally situated for deer and waterfowl conservation, with utilities available along the road frontage. This tract presents a rare opportunity to steward a biologically diverse landscape in the heart of the Mississippi Delta.

Location: Section 3 / TWP7N / RNG 9N – Issaquena County Mississippi

Taxes: \$586.11 (2024)

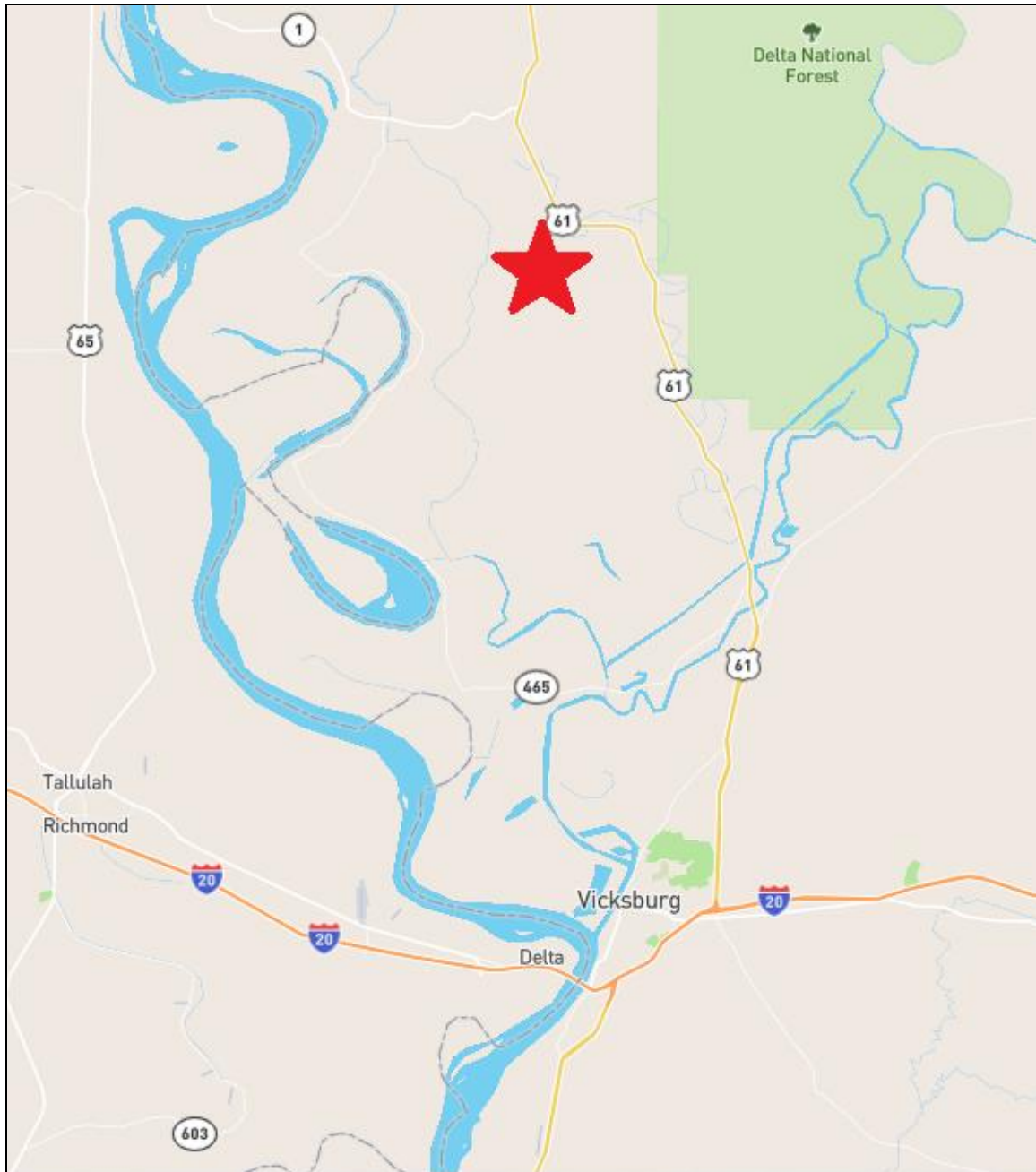
Price: \$1,450,000.00

Contact:

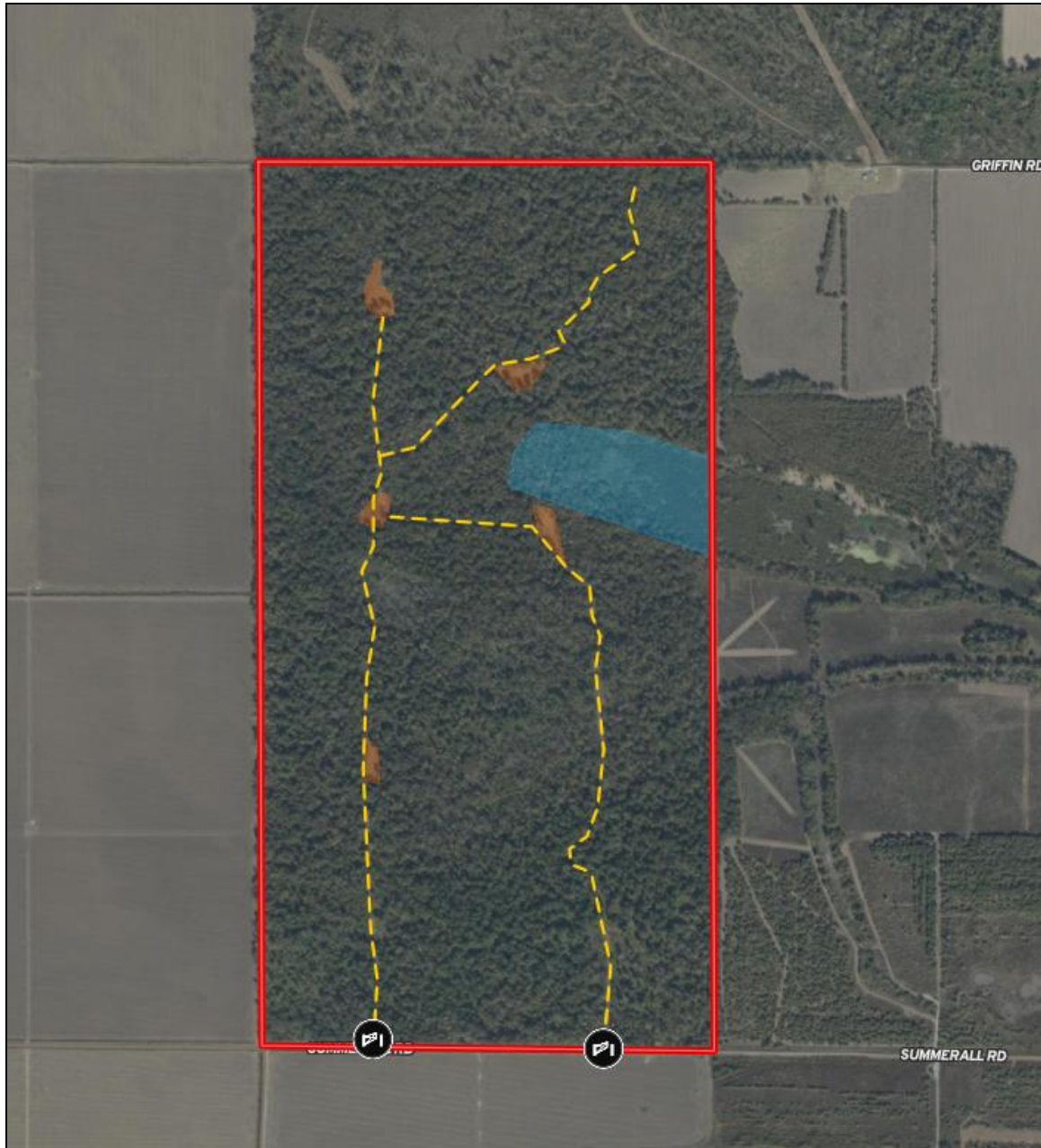
Joe Mallard 601- 927-8222 Jmallard@SHPland.com

TJ Mallette 601-966-7932 Tjmallette@SHPland.com

LOCATOR MAP



AERIAL MAP



PHOTOS





