



Office Building Near Downtown Cleveland 200 North Street, Cleveland, MS | \$145,000

Bring your business to Cleveland, MS! This prime office building is located in the heart of Cleveland in Bolivar County, MS, just a few blocks from the vibrant downtown area, filled with shops and restaurants. This 1,801± SF brick office building, formerly a bank, offers a convenient drive-through window for customer convenience. Inside, you'll find three private offices, a conference room, a welcoming lobby, a kitchenette, and two bathrooms—perfect for a variety of professional needs. Contact Tracey Bell today to schedule a private showing and explore all this property offers!



**TRACEY
BELL**

MANAGING BROKER

Office: 662.441.2500

Cell: 662.719.4720

Tracey@TomSmithLand.com



Expect More. Get More.

A Real Estate Expert You Can Trust

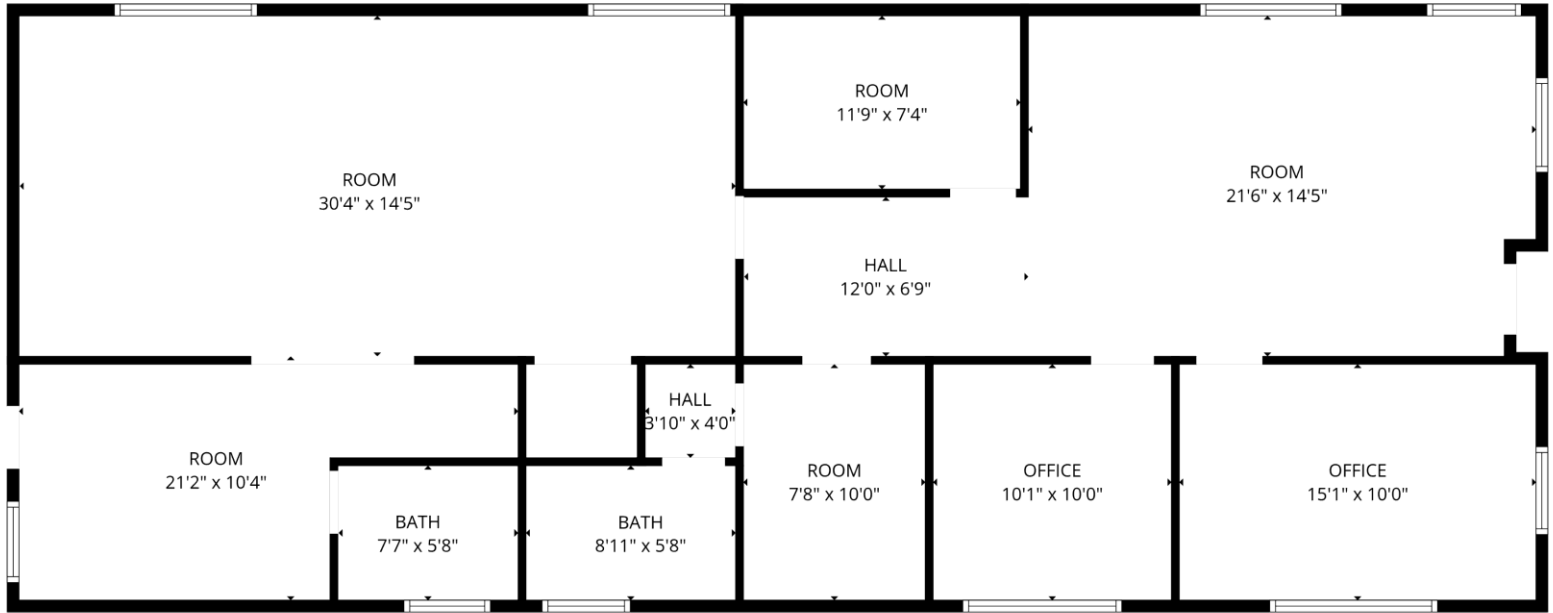
TomSmithLandandHomes.com

Information is believed to be accurate but not guaranteed.



1,801± SF
Year Built: 1965

2025 Property Taxes: \$3,028.95
Parcel #: 33-21-275-00-04200



FLOOR PLAN CREATED BY CUBICASA APP. MEASUREMENTS DEEMED HIGHLY RELIABLE BUT NOT GUARANTEED.

A Real Estate Expert
You Can Trust!

TRACEY BELL
MANAGING BROKER

O: 662.441.2500 C: 662.719.4720

Tracey@TomSmithLand.com

TomSmithLandandHomes.com



Expect More. Get More.

Information is believed to be accurate but not guaranteed.





A Real Estate Expert
You Can Trust!

TRACEY BELL

MANAGING BROKER

O: 662.441.2500 C: 662.719.4720

Tracey@TomSmithLand.com

TomSmithLandandHomes.com



Expect More. Get More.



Information is believed to be accurate but not guaranteed.



**A Real Estate Expert
You Can Trust!**

TRACEY BELL

MANAGING BROKER

O: 662.441.2500 C: 662.719.4720

Tracey@TomSmithLand.com

TomSmithLandandHomes.com

**Tom
Smith
LAND AND
HOMES**

Expect More. Get More.

2011-2025
BEST
BROKERAGES

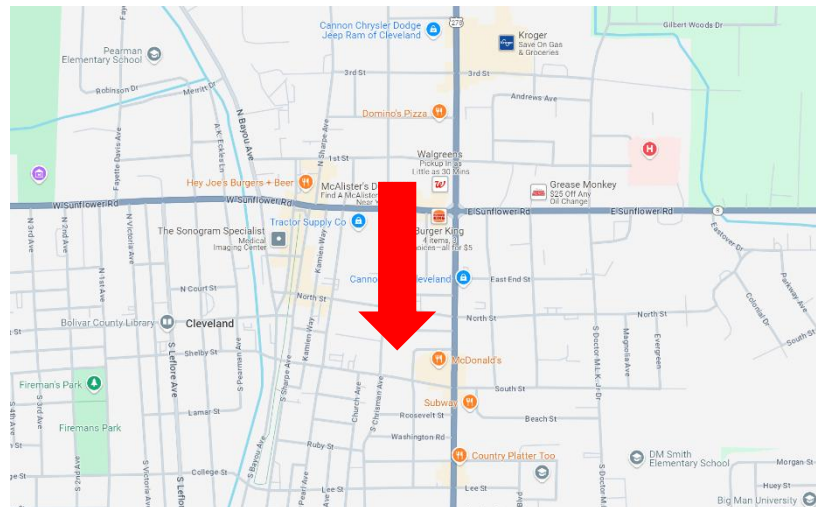
Information is believed to be accurate but not guaranteed.



Directions from Hwy 8 & Hwy 61 in Cleveland: Travel south on Hwy 61 for 0.2 miles. Turn right onto North Street. After 0.1 mile, the property will be on the left.

Address:
200 North Street, Cleveland, MS 38732

[Google Maps Link](#)



**TRACEY
BELL**

MANAGING BROKER

Office: 662.441.2500

Cell: 662.719.4720

Tracey@TomSmithLand.com



Expect More. Get More.

A Real Estate Expert You Can Trust

TomSmithLandandHomes.com

Information is believed to be accurate but not guaranteed.

