

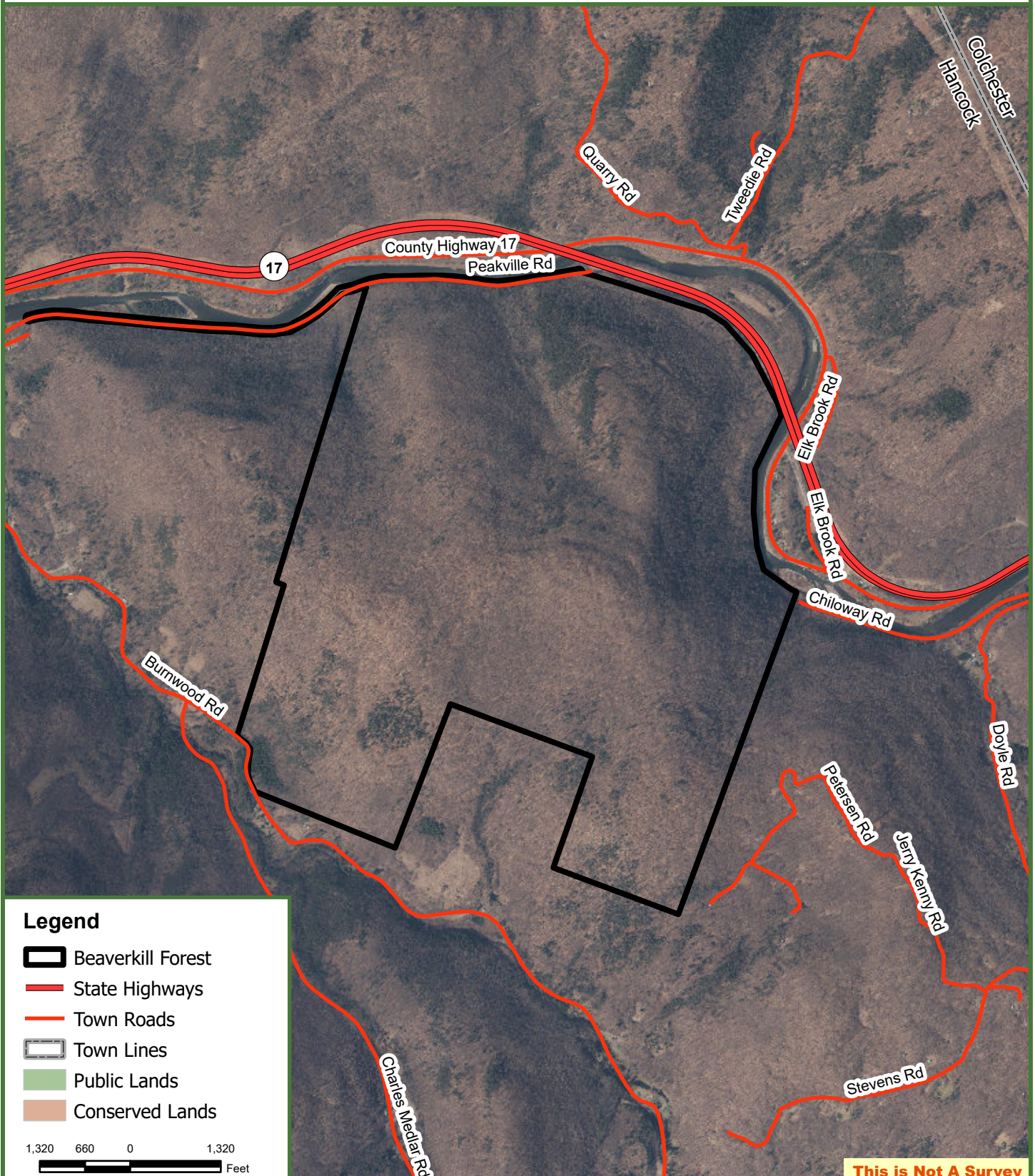


# Beaverkill Forest

1,184 GIS Acres  
Hancock, Delaware County, New York



**Fountains  
Land**  
AN F&W COMPANY



## Legend

- Beaverkill Forest
- State Highways
- Town Roads
- Town Lines
- Public Lands
- Conserved Lands

1,320 660 0 1,320  
Feet

**This is Not A Survey**

Map produced from the best available information including town tax maps, hand held GPS data, aerial photography and reference information obtained from publicly available GIS sources, and the owner. Boundary lines portrayed on this map are approximate and could be different than the actual location of boundaries found in the field.