

# Move-In Ready Home on 1± Acre

1183 Adams Road, Oakland, MS 38948



**\$230,000**

## Country home for sale at 1183 Adams Road in Oakland, Tallahatchie County.

This charming, renovated brick home sits on 1± acre in a peaceful countryside setting and features a covered 2-car carport. The property has been updated, featuring an extension that adds a large living room and storage room, as well as a stained deck overlooking a spacious backyard. The home offers 2,338 square feet of heated and cooled living space, three bedrooms and two bathrooms, with an open floor plan connecting the kitchen to the living room. The kitchen is equipped with a walk-in pantry, microwave, electric stove, dishwasher, refrigerator, and a large stainless-steel sink. A convenient laundry closet is also located in the kitchen, complete with a large white metal shelf. The living room is cozy, featuring a gas fireplace and lots of space for family gatherings. The primary bedroom and bathroom, which were part of the addition, include a bay window, custom cabinets, and a walk-in closet. The home has ceramic tile flooring throughout, with the primary bedroom featuring stained concrete, while the two guest bedrooms have vinyl plank flooring.

**Contact Anthony Steen today to view this beautiful, peaceful country home!**



**ANTHONY  
STEEN**

REALTOR®

Office: 601.898.2772

Cell: 662.645.5151

[Anthony@TomSmithLand.com](mailto:Anthony@TomSmithLand.com)



Expect More. Get More.

**A Real Estate Expert You Can Trust**

[TomSmithLandandHomes.com](http://TomSmithLandandHomes.com)

Information is believed to be accurate but not guaranteed.







**A Real Estate Expert**  
*You Can Trust!*

**ANTHONY STEEN**  
REALTOR®  
O: 601.898.2772 C: 662.645.5151  
Anthony@TomSmithLand.com  
TomSmithLandandHomes.com

**Tom Smith**  
**LAND AND HOMES**  
Expect More. Get More.

LandReport  
2011-2025  
AMERICA'S  
**BEST**  
BROKERAGES

Information is believed to be accurate but not guaranteed.





**A Real Estate Expert**  
*You Can Trust!*

**ANTHONY STEEN**

REALTOR®

O: 601.898.2772 C: 662.645.5151

Anthony@TomSmithLand.com

TomSmithLandandHomes.com

**Tom Smith**  
**LAND AND HOMES**

Expect More. Get More.

LandReport  
2011-2025  
AMERICA'S  
**BEST**  
BROKERAGES

Information is believed to be accurate but not guaranteed.





**A Real Estate Expert**  
*You Can Trust!*

**ANTHONY STEEN**  
REALTOR®  
O: 601.898.2772 C: 662.645.5151  
Anthony@TomSmithLand.com  
TomSmithLandandHomes.com

**Tom Smith**  
LAND AND  
HOMES  
Expect More. Get More.

LandReport  
2011-2025  
AMERICA'S  
**BEST**  
BROKERAGES

Information is believed to be accurate but not guaranteed.





**A Real Estate Expert**  
*You Can Trust!*

**ANTHONY STEEN**

REALTOR®

O: 601.898.2772 C: 662.645.5151

[Anthony@TomSmithLand.com](mailto:Anthony@TomSmithLand.com)

[TomSmithLandandHomes.com](http://TomSmithLandandHomes.com)



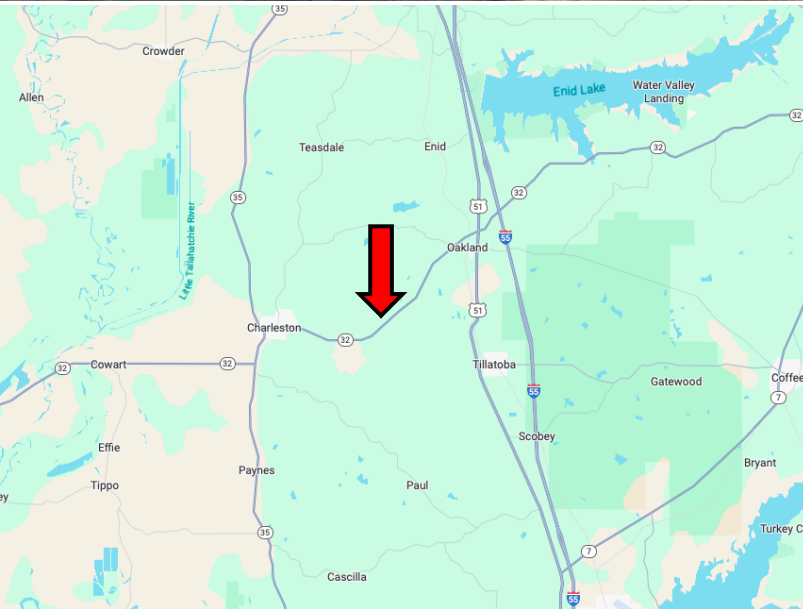
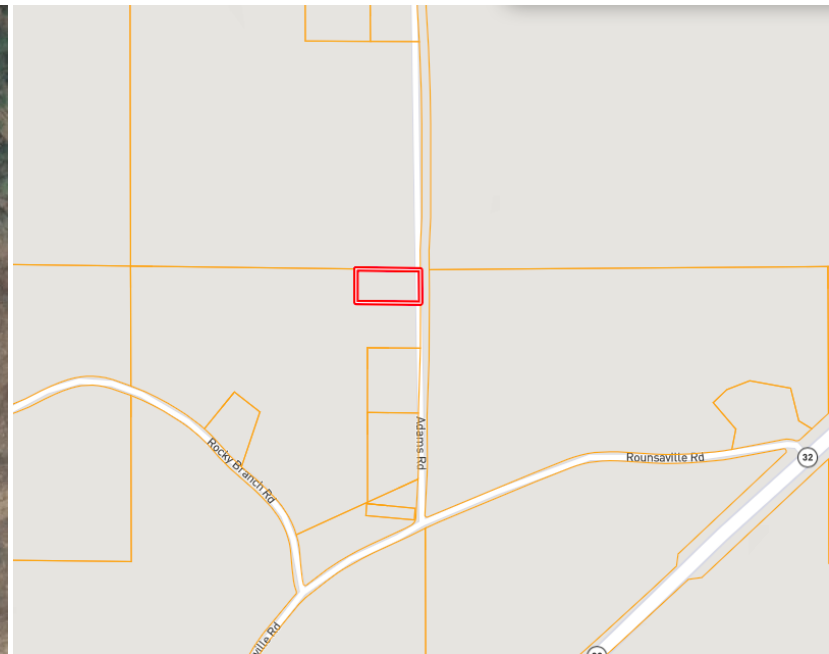
Expect More. Get More.



Information is believed to be accurate but not guaranteed.



# MAPS / [Click for the Interactive Map](#)



**Address: 1183 Adams Road  
Oakland, MS 38948**

**Directions from MS-35 & Hwy 32,  
Charleston, MS:** Travel east on Hwy  
32 E for 4.8 miles. Take a slight left  
onto Rounsaville Drive for 0.5 miles.  
Turn left onto Adams Road. After 0.2  
miles, the home will be on the left.

**[Google Maps Link](#)**



**ANTHONY  
STEEN**  
REALTOR®

Office: 601.898.2772

Cell: 662.645.5151

[Anthony@TomSmithLand.com](mailto:Anthony@TomSmithLand.com)



Expect More. Get More.

**A Real Estate Expert You Can Trust**

[TomSmithLandandHomes.com](http://TomSmithLandandHomes.com)

Information is believed to be accurate but not guaranteed.

