

Cabin on 2.76± Acres Oktribbeha County, MS



\$289,000

Welcome to 1887 MS Hwy 182. This 1,408 square foot, 3 bed 2 bath cabin sits on 2.76± acres in the Adaton Community. This cabin is situated at the end of a dead-end road with plenty of privacy. It features front and back porches that over-look the property and the entire back yard is completely fenced. There is also a large barn on the property for all your storage needs. The circle driveway allows for easy access all around the house, barn and property. This property is just 7.5 miles from Main Street in Starkville. and within 20 minutes of Mississippi State University! To schedule a private showing, call or text Johnny today!



**JOHNNY
LUKE**

REALTOR®

Office: 662.268.6333

Cell: 662.803.2622

JohnnyLuke@TomSmithLand.com



Expect More. Get More.

A Real Estate Expert You Can Trust

TomSmithLandandHomes.com

Information is believed to be accurate but not guaranteed.





A Real Estate Expert
You Can Trust!

JOHNNY LUKE
REALTOR®

O: 662.268.6333 C: 662.803.2622

JohnnyLuke@TomSmithLand.com

TomSmithLandandHomes.com



Expect More. Get More.



Information is believed to be accurate but not guaranteed.



A Real Estate Expert
You Can Trust!

JOHNNY LUKE
REALTOR®

O: 662.268.6333 C: 662.803.2622

JohnnyLuke@TomSmithLand.com

TomSmithLandandHomes.com

**Tom
Smith**
**LAND AND
HOMES**

Expect More. Get More.

2011-2024
BEST
REALTOR

Information is believed to be accurate but not guaranteed.

Aerial Map



[Interactive Map Link](#)

A Real Estate Expert
You Can Trust!

JOHNNY LUKE
REALTOR®

O: 662.268.6333 C: 662.803.2622

JohnnyLuke@TomSmithLand.com

TomSmithLandandHomes.com

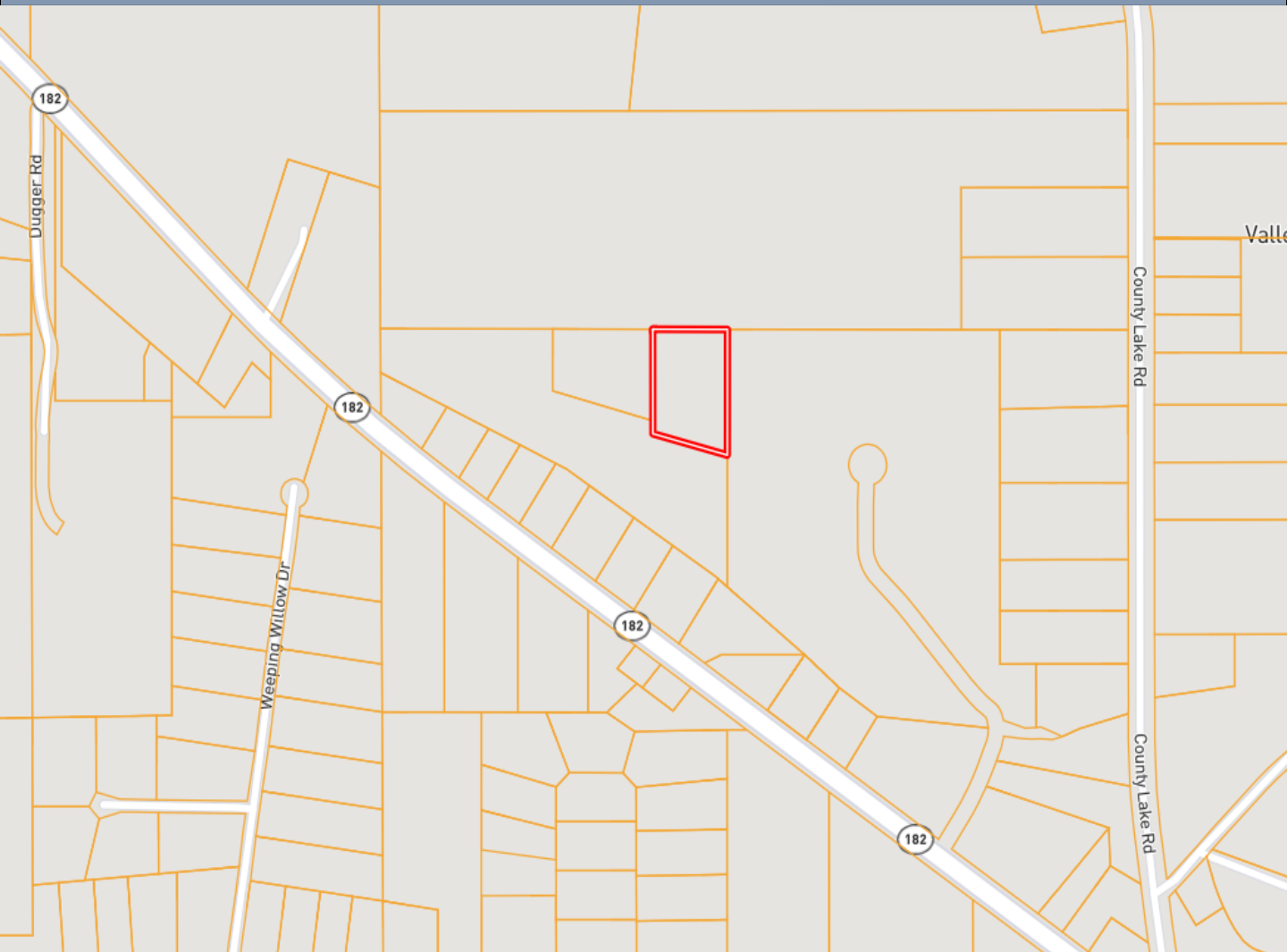


Expect More. Get More.



Information is believed to be accurate but not guaranteed.

Ownership Map



A Real Estate Expert
You Can Trust!

JOHNNY LUKE
REALTOR®

O: 662.268.6333 C: 662.803.2622

JohnnyLuke@TomSmithLand.com

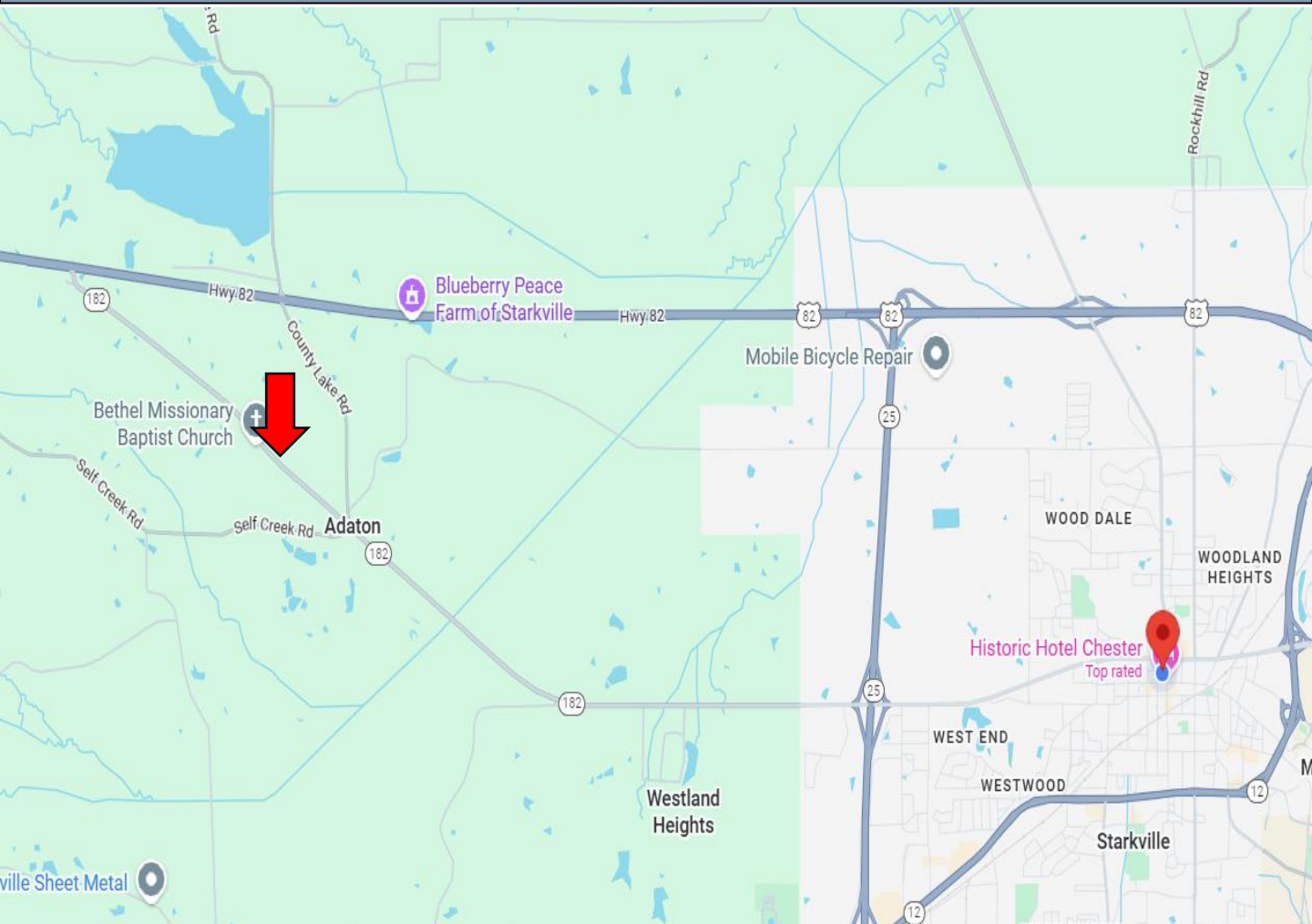
TomSmithLandandHomes.com



Information is believed to be accurate but not guaranteed.



Directional Map



Directions from Starkville, MS: From Hwy 12, go north on Hwy 25 to HWY 182 then go west on Hwy 182 for 5 miles and the property will be on the right (north side of Hwy). A Tom Smith Land and Homes sign next to driveway.

[Google Map Link](#)



**JOHNNY
LUKE**

REALTOR®

Office: 662.268.6333

Cell: 662.803.2622

JohnnyLuke@TomSmithLand.com



Expect More. Get More.

A Real Estate Expert You Can Trust

TomSmithLandandHomes.com

Information is believed to be accurate but not guaranteed.

