

TIMBER ♦ RECREATION ♦ DEVELOPMENT

142 ± Acres in Jasper County, MS



\$475,700

This 142± acre Jasper County tract combines mature 30-year-old pine timber, strong access, and multiple development angles in a single, well-positioned property. With over 4,000 feet of County Road 8 frontage, management and future division options are already built in. A separate 21± acre section provides an opportunity for a homesite, cabin, or resale without affecting the main acreage. The property also includes an established camp site with water and electricity, giving buyers a functional starting point for hunting or improvements. Timber quality, location, and layout create consistent deer and turkey habitat throughout the tract. Located just 12 miles from Laurel, this acreage offers practical access while maintaining a rural setting. For buyers seeking a multi-use property with real, measurable upside, this tract meets investment, recreational, and long-term development needs without overlap or compromise.



DALE WILDS
REALTOR®

O: 601.898.2772 | C: 662.715.7109
Dale@TomSmithLand.com



DAVID BELDEN
ALC®, REALTOR®

O: 601.898.2772 | C: 601.415.3884
DBelden@TomSmithLand.com

TomSmithLandandHomes.com

Information is believed to be accurate but not guaranteed.





DALE WILDS
REALTOR®

O: 601.898.2772 | C: 662.715.7109
Dale@TomSmithLand.com



DAVID BELDEN
ALC®, REALTOR®

O: 601.898.2772 | C: 601.415.3884
DBelden@TomSmithLand.com

TomSmithLandandHomes.com

Information is believed to be accurate but not guaranteed.





DALE WILDS
REALTOR®

O: 601.898.2772 | C: 662.715.7109
Dale@TomSmithLand.com



DAVID BELDEN
ALC®, REALTOR®

O: 601.898.2772 | C: 601.415.3884
DBelden@TomSmithLand.com

TomSmithLandandHomes.com

Information is believed to be accurate but not guaranteed.



AERIAL MAP



[CLICK HERE FOR THE LANDID INTERACTIVE MAP](#)

DALE WILDS
REALTOR®

O: 601.898.2772 | C: 662.715.7109
Dale@TomSmithLand.com



DAVID BELDEN
ALC®, REALTOR®

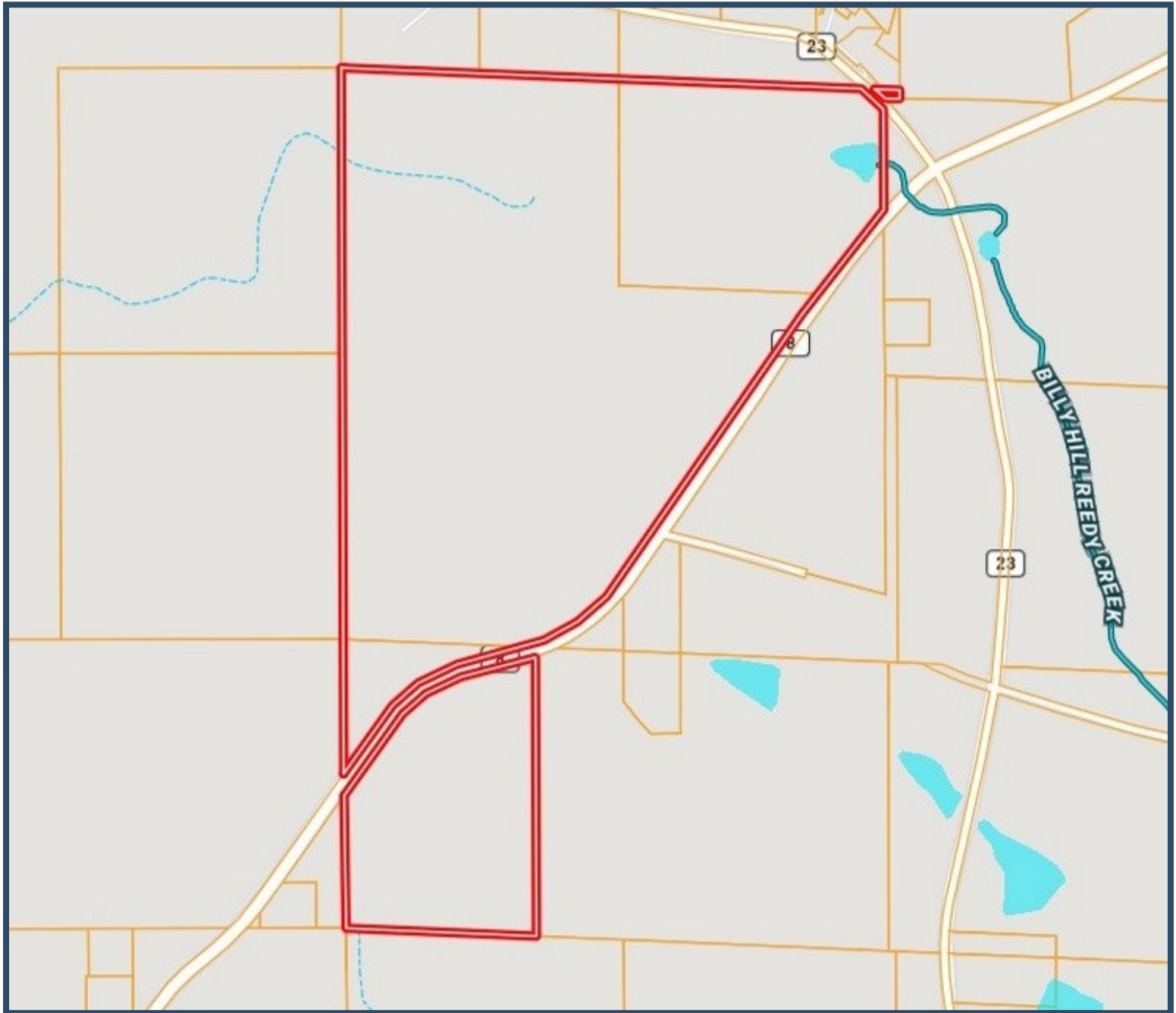
O: 601.898.2772 | C: 601.415.3884
DBelden@TomSmithLand.com

TomSmithLandandHomes.com

Information is believed to be accurate but not guaranteed.



OWNERSHIP MAP



DALE WILDS
REALTOR®

O: 601.898.2772 | C: 662.715.7109
Dale@TomSmithLand.com



DAVID BELDEN
ALC®, REALTOR®

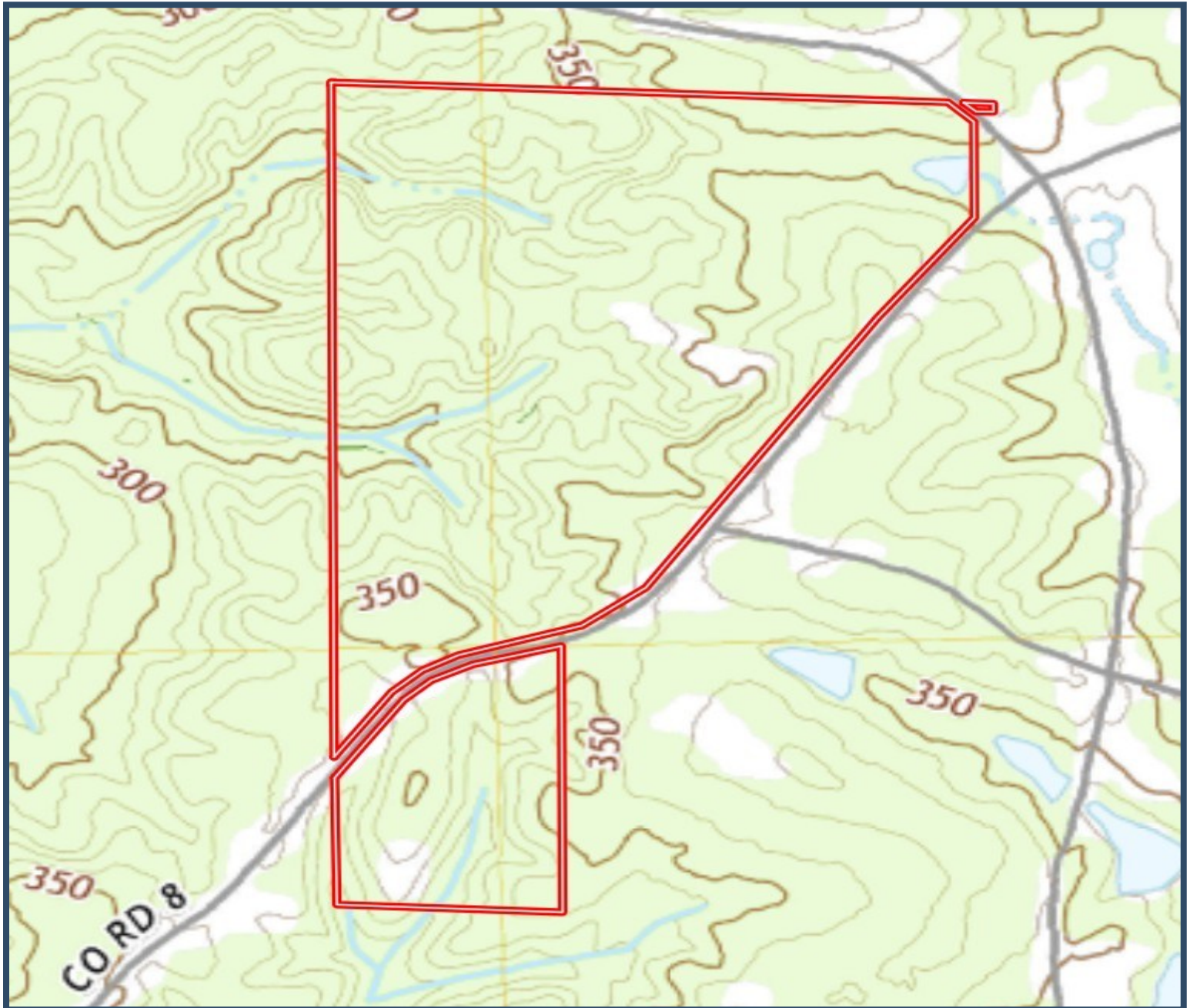
O: 601.898.2772 | C: 601.415.3884
DBelden@TomSmithLand.com

TomSmithLandandHomes.com

Information is believed to be accurate but not guaranteed.



TOPO MAP



DALE WILDS
REALTOR®

O: 601.898.2772 | C: 662.715.7109
Dale@TomSmithLand.com



DAVID BELDEN
ALC®, REALTOR®

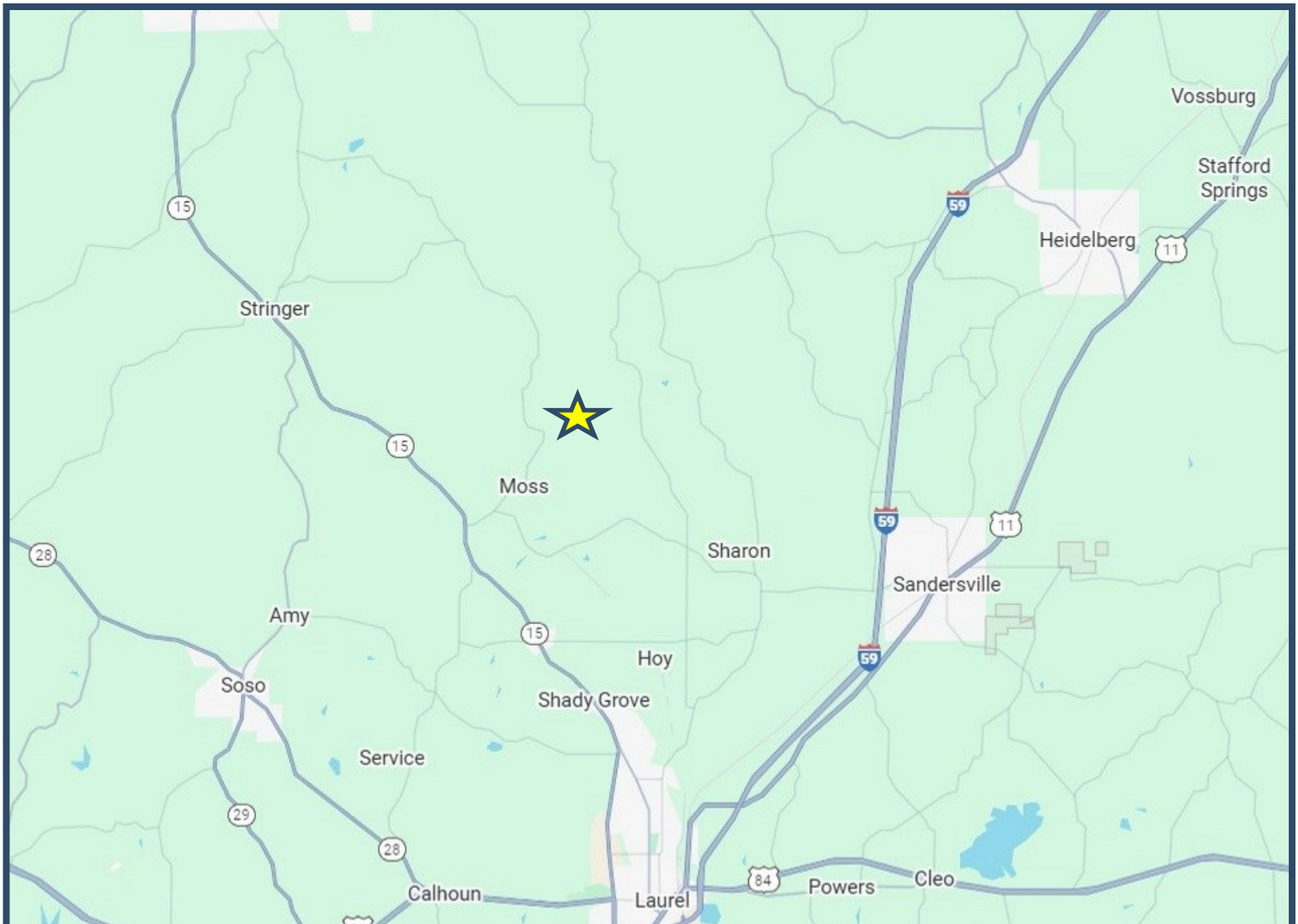
O: 601.898.2772 | C: 601.415.3884
DBelden@TomSmithLand.com

TomSmithLandandHomes.com

Information is believed to be accurate but not guaranteed.



DIRECTIONAL MAP



Directions from the Hwy 15/Ms-537 Intersection, travel east on Ms-537S toward Shady Grove Moss Rd for 1.5 miles, continue onto Hwy 537 for .5 miles, then continue on Co Rd 8 for .8 miles and stay on Co Rd 8 for 2.0 miles, the gate will be on your left.

[GOOGLE MAP LINK](#)

DALE WILDS
REALTOR®

O: 601.898.2772 | C: 662.715.7109
Dale@TomSmithLand.com



DAVID BELDEN
ALC®, REALTOR®

O: 601.898.2772 | C: 601.415.3884
DBelden@TomSmithLand.com

TomSmithLandandHomes.com

Information is believed to be accurate but not guaranteed.

