

MOBILE HOME LOT

3.02 ± Acres in Jefferson Davis County, MS



\$45,000

This 3.02± acre lot is conveniently located on Hwy 43 and ready for you to set up your home. The pad, well, septic tank and electric pole are already in place. The large, wooded lot features a small pond and plenty of room for the kids to play. The mobile home will be moved. Don't wait—call Tom today!



**TOM
WISEMAN**

ASSOCIATE BROKER

Office: 662.268.6333

Cell: 662.317.0467

TWiseman@TomSmithLand.com



Expect More. Get More.

A Real Estate Expert You Can Trust

TomSmithLandandHomes.com

Information is believed to be accurate but not guaranteed.





A Real Estate Expert *You Can Trust!*

TOM WISEMAN

ASSOCIATE BROKER

O: 662.268.6333 C: 662.317.0467

TWiseman@TomSmithLand.com

TomSmithLandandHomes.com



Expect More. Get More.



Information is believed to be accurate but not guaranteed.

AERIAL MAP



[Click Here for the LandId Interactive Map Link](#)

A Real Estate Expert
You Can Trust!

TOM WISEMAN

ASSOCIATE BROKER

O: 662.268.6333 C: 662.317.0467

Twiseman@TomSmithLand.com

TomSmithLandandHomes.com

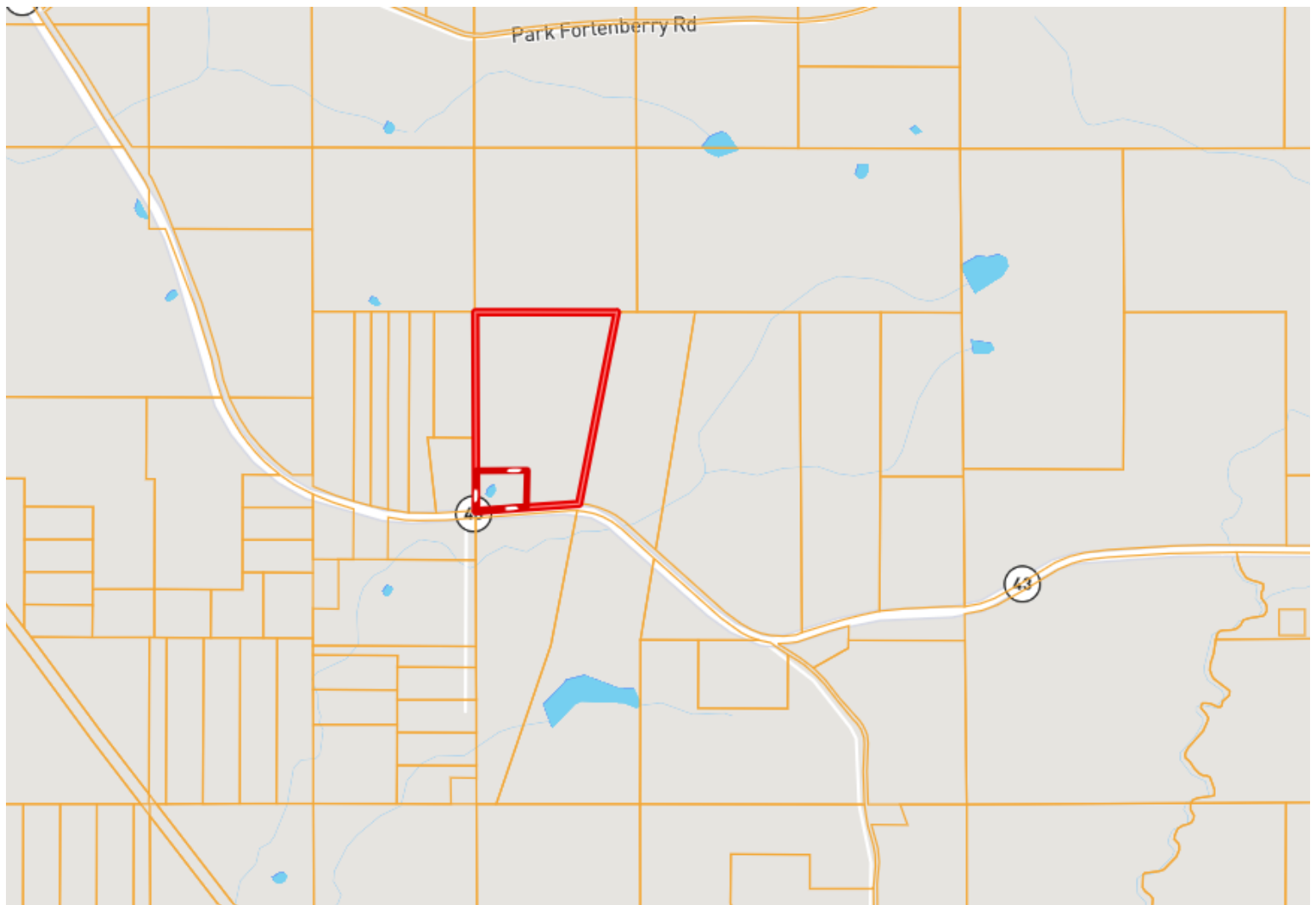


Expect More. Get More.

Information is believed to be accurate but not guaranteed.



OWNERSHIP MAP



A Real Estate Expert
You Can Trust!

TOM WISEMAN

ASSOCIATE BROKER

O: 662.268.6333 C: 662.317.0467

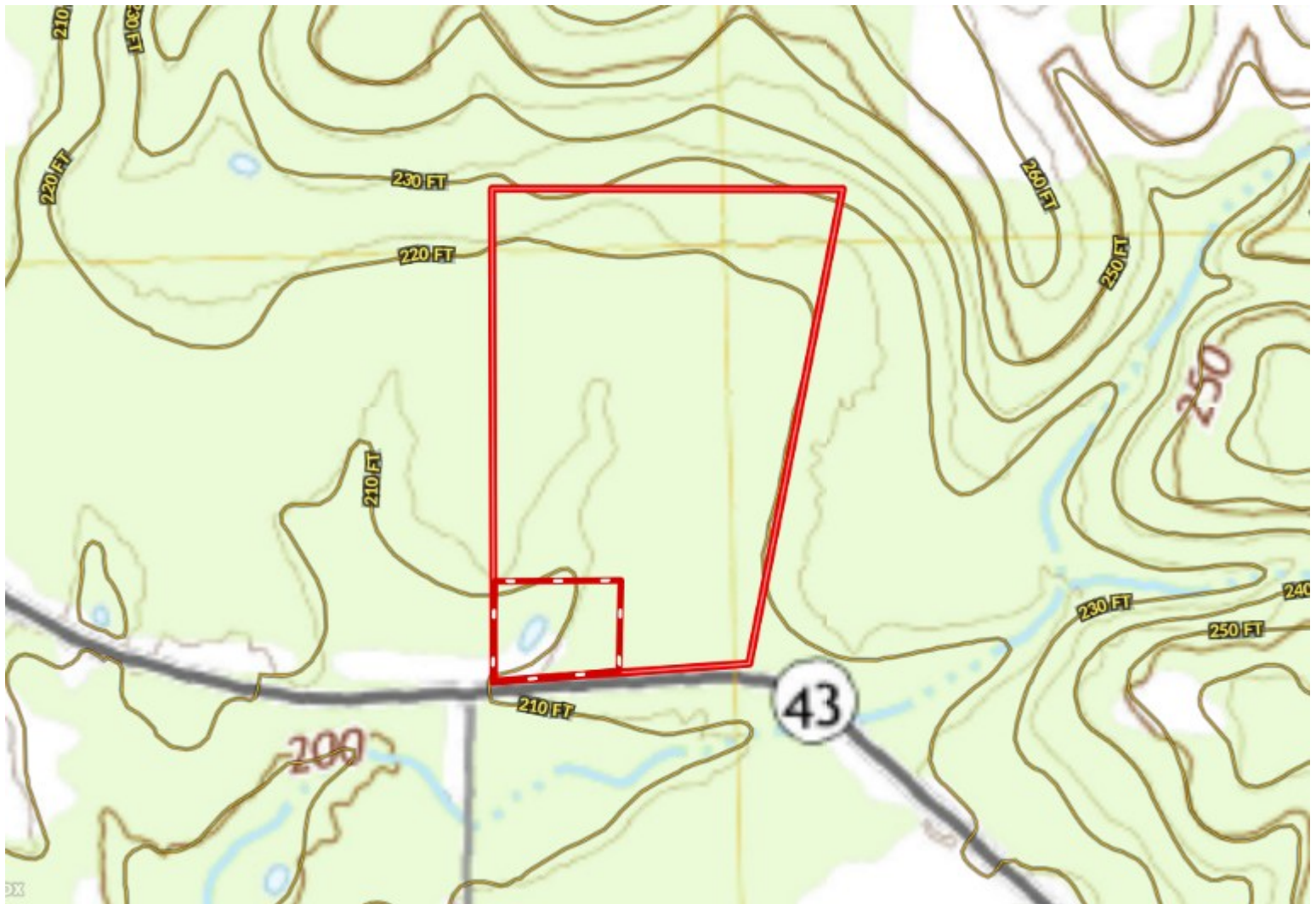
TWiseman@TomSmithLand.com

TomSmithLandandHomes.com



Information is believed to be accurate but not guaranteed.

TOPO MAP



A Real Estate Expert
You Can Trust!

TOM WISEMAN

ASSOCIATE BROKER

O: 662.268.6333 C: 662.317.0467

TWiseman@TomSmithLand.com

TomSmithLandandHomes.com

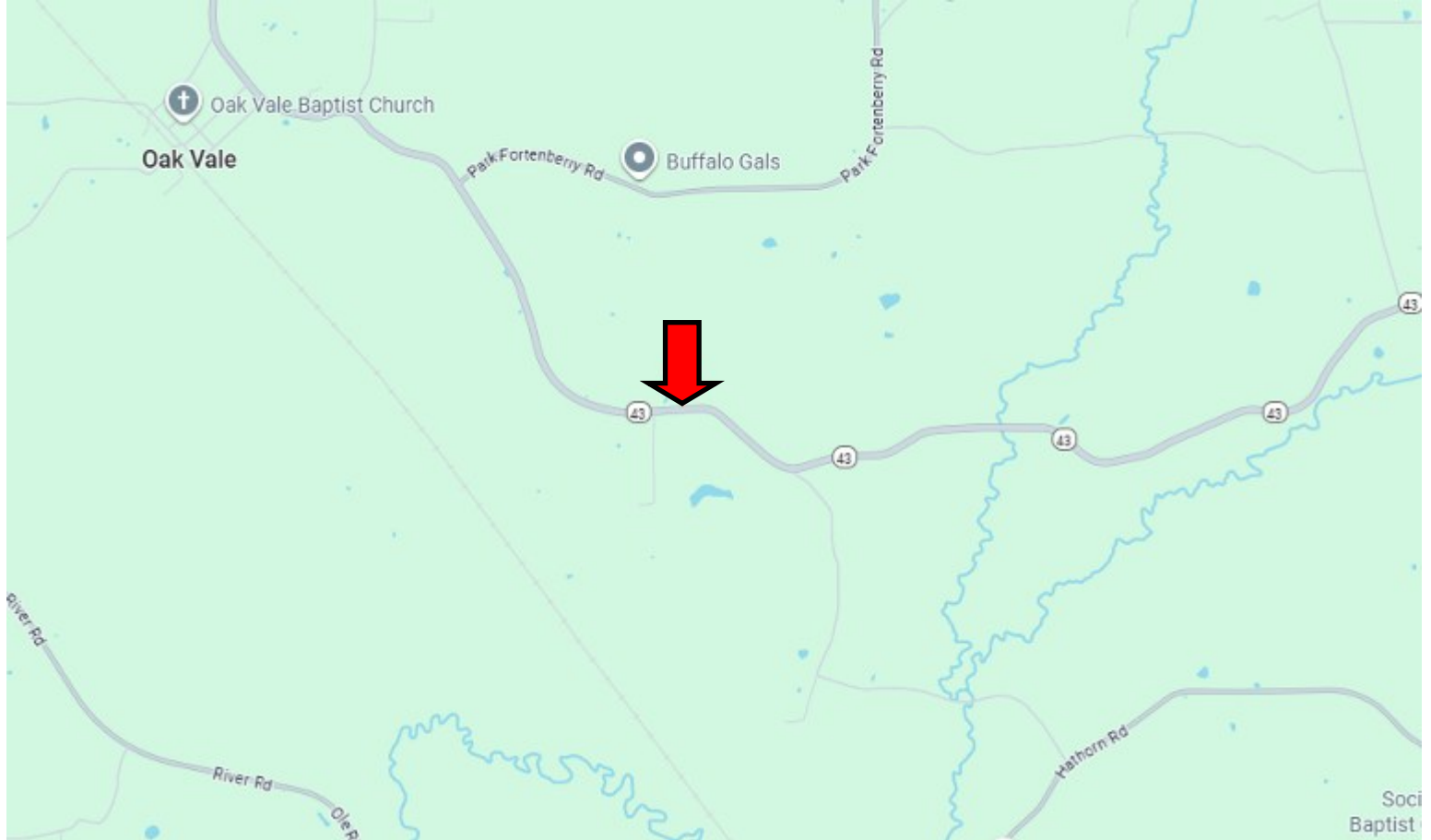
**Tom
Smith
LAND AND
HOMES**

Expect More. Get More.

2011-2014
NATIONAL
BEST
BROKERAGES

Information is believed to be accurate but not guaranteed.

DIRECTIONAL MAP



From the intersection of Hwy 13/Hwy 43 in Oak Vale, MS: Take Hwy 43 west for 2.9 miles and the property will be on your right.

Address: 592 Hwy 43 Oak Vale, MS 39656

[Click for Google Maps Link](#)



**TOM
WISEMAN**

ASSOCIATE BROKER

Office: 662.268.6333

Cell: 662.317.0467

TWiseman@TomSmithLand.com



Expect More. Get More.

A Real Estate Expert You Can Trust

TomSmithLandandHomes.com

Information is believed to be accurate but not guaranteed.

