

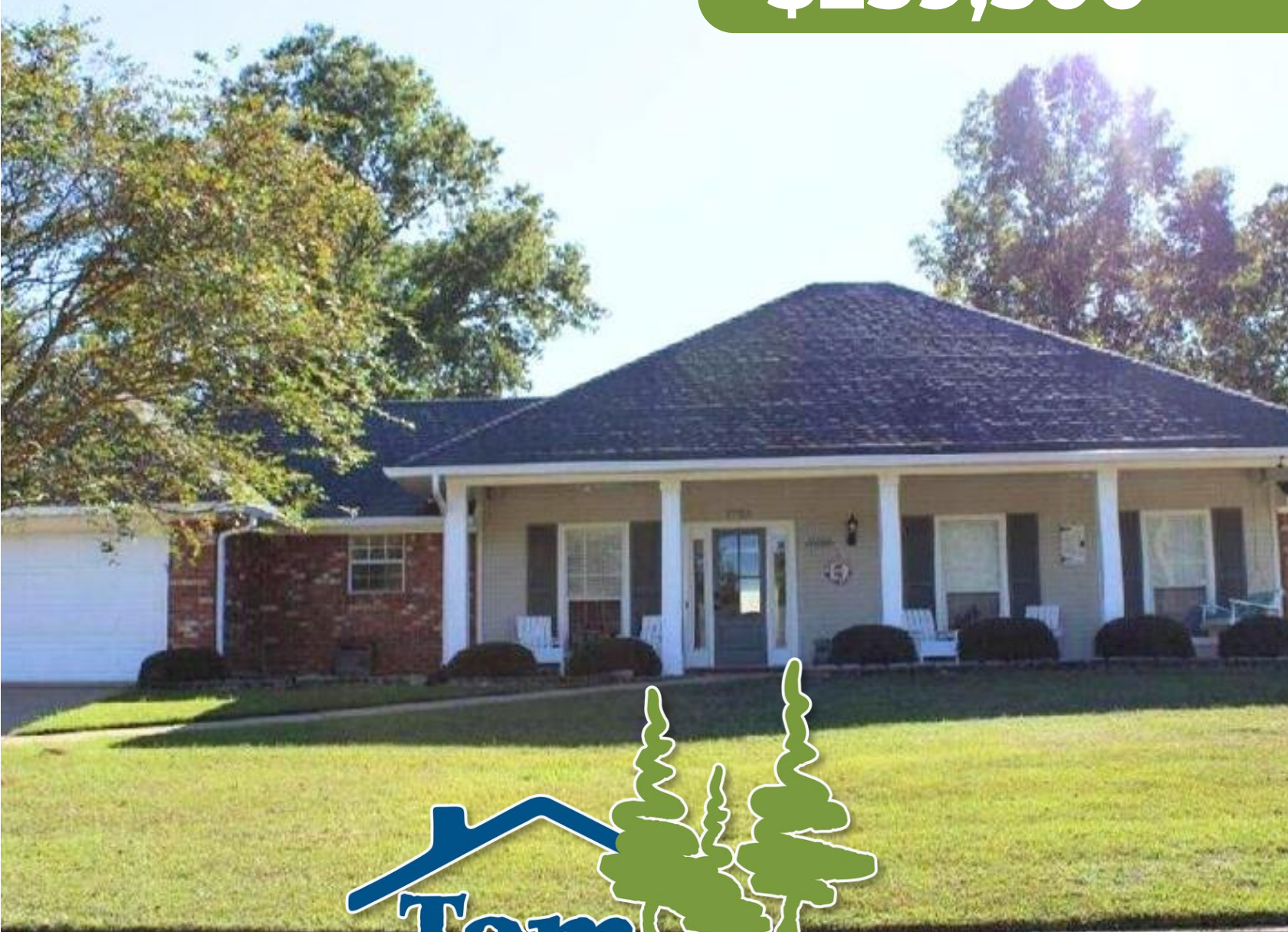
2723 N Sycamore Cove

3 Bedroom | 2 Bathroom

Pearl/Rankin/MS



\$259,500



Expect More. Get More.

Property Information

Location:

- 2723 N Sycamore Cove
Pearl, MS 39208
- Patton Place Subdivision

Coordinates:

- 32.274, -90.121

Property Use:

- Residential
- Well- maintained and move in ready.

Property Highlights

- 0.28 Acres
- 1,725 sq ft, 3 bedrooms, 2 bathrooms
- Kitchen with stainless steel appliances.
- Sunroom with tinted windows.
- The wood-burning fireplace features a convenient gas starter.
- Spacious primary suite with vaulted ceiling, large closet, and built-in vanity
- Large back deck for relaxing or entertaining
- Vivint security system with cameras, alarms, and a thermostat
- Surround sound in the living room, porch, garage, and shed.
- 6.5' x 9' roll-up door in garage providing easy backyard access
- 12' x 16' insulated workshop/man cave with attic storage.
- Additional 12' x 14' lean-to shed for extra storage



ERIN MONSOUR
REALTOR®

O: 601.898.2772 | C: 601.951.1554
Erin@TomSmithLand.com



HALEY BELDEN
REALTOR®

O: 601.898.2772 | C: 601.209.2310
Haley@TomSmithLand.com

The Residence

1,725 Sq Ft

Welcome to this charming 3-bedroom, 2-bath home with 1,725 sq ft in the Patton Place Subdivision. The spacious foyer opens to a formal dining area and a large living room with vaulted ceilings, creating an open, airy feel. The kitchen features stainless steel appliances and an electric range, and flows into a bright sunroom with tinted windows, perfect for year-round enjoyment. The primary suite offers a vaulted ceiling, plush carpet, a spacious closet, and a built-in vanity. Two additional bedrooms provide ample space and storage. The laundry room is conveniently located off the kitchen with direct garage access, including a 6.5' x 9' roll-up door to the backyard. Outside, enjoy a large deck ideal for relaxing or entertaining, plus a 12' x 16' insulated workshop/man cave with attic storage, window unit, and TV, along with a 12' x 14' lean-to shed. This well-maintained Rankin County home offers comfort, functionality, and great outdoor living. Call Erin or Haley to schedule your tour today!



ERIN MONSOUR
REALTOR®

O: 601.898.2772 | C: 601.951.1554
Erin@TomSmithLand.com

HALEY BELDEN
REALTOR®

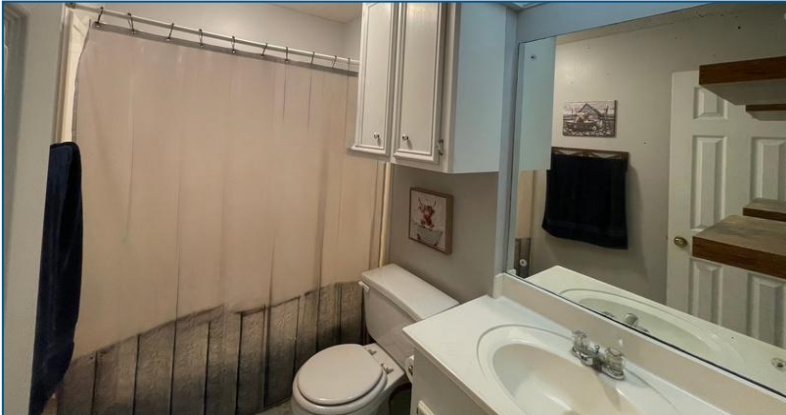
O: 601.898.2772 | C: 601.209.2310
Haley@TomSmithLand.com

TomSmithLandandHomes.com

Information is believed to be accurate but not guaranteed.



The Residence



ERIN MONSOUR
REALTOR®

O: 601.898.2772 | C: 601.951.1554
Erin@TomSmithLand.com



HALEY BELDEN
REALTOR®

O: 601.898.2772 | C: 601.209.2310
Haley@TomSmithLand.com

TomSmithLandandHomes.com

Information is believed to be accurate but not guaranteed.



The Residence



ERIN MONSOUR
REALTOR®

O: 601.898.2772 | C: 601.951.1554
Erin@TomSmithLand.com



HALEY BELDEN
REALTOR®

O: 601.898.2772 | C: 601.209.2310
Haley@TomSmithLand.com

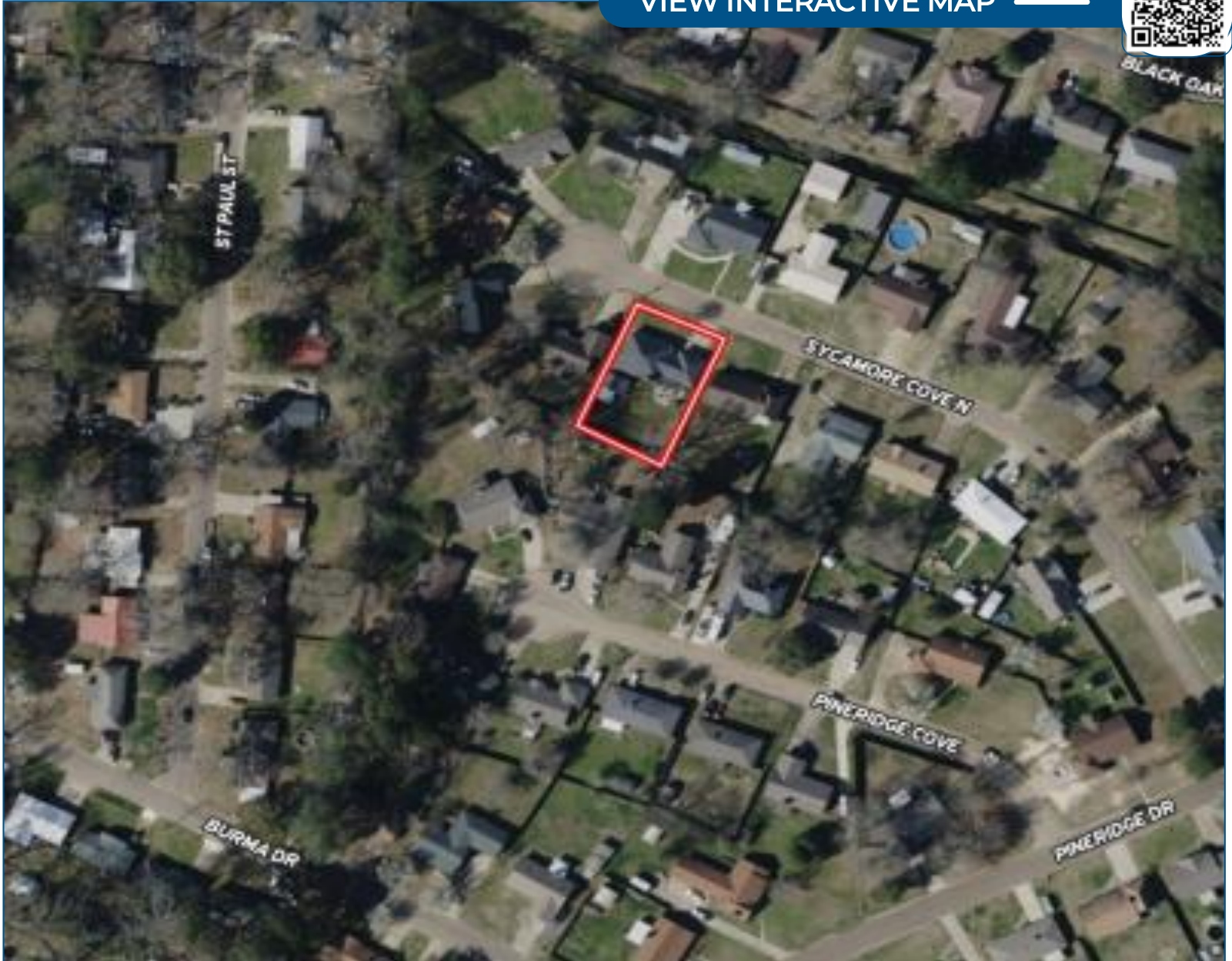
TomSmithLandandHomes.com

Information is believed to be accurate but not guaranteed.



Aerial Map

[VIEW INTERACTIVE MAP](#)



ERIN MONSOUR
REALTOR®

O: 601.898.2772 | C: 601.951.1554
Erin@TomSmithLand.com



HALEY BELDEN
REALTOR®

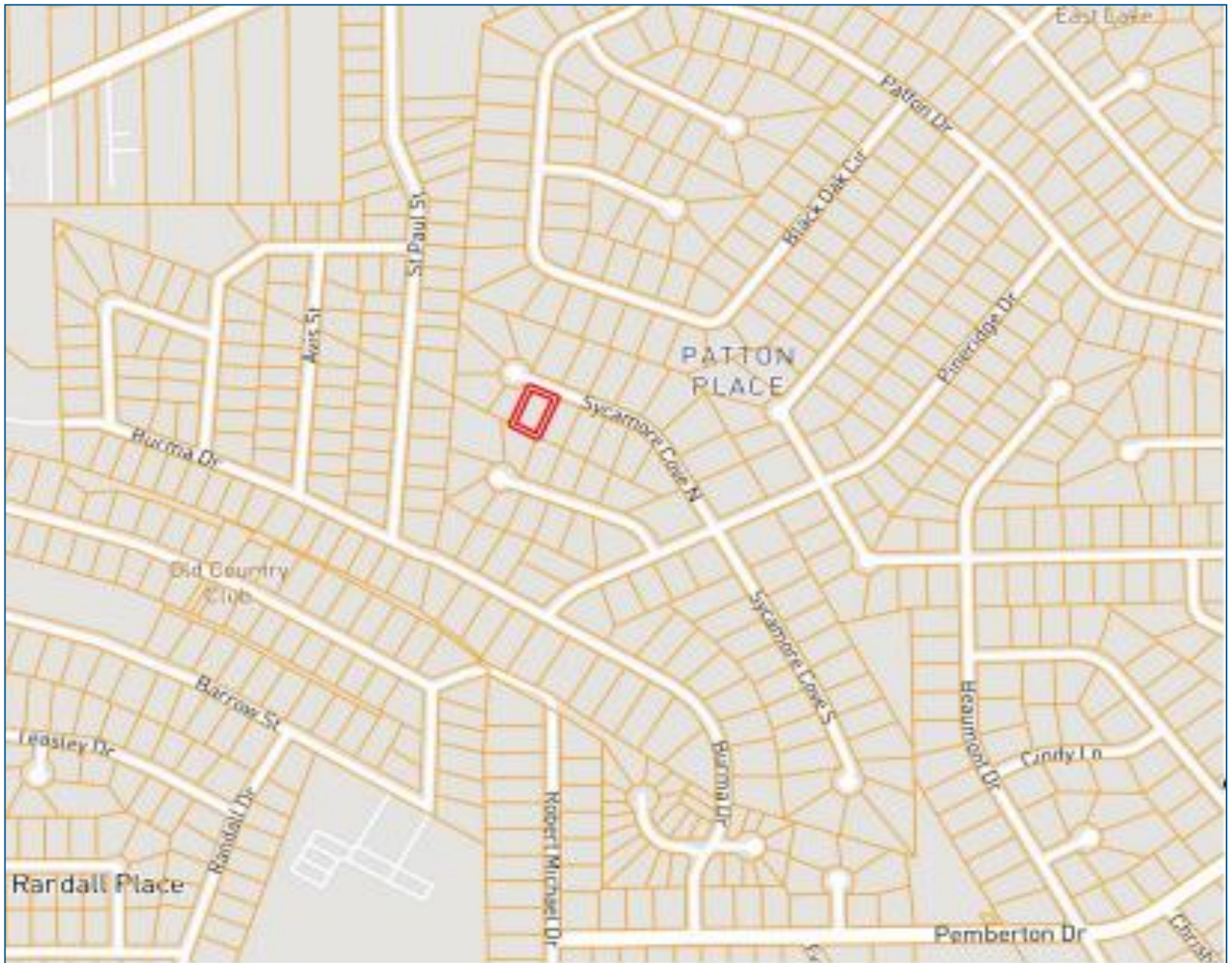
O: 601.898.2772 | C: 601.209.2310
Haley@TomSmithLand.com

TomSmithLandandHomes.com

Information is believed to be accurate but not guaranteed.



Ownership Map



ERIN MONSOUR

REALTOR®

O: 601.898.2772 | C: 601.951.1554

Erin@TomSmithLand.com



HALEY BELDEN

REALTOR®

O: 601.898.2772 | C: 601.209.2310

Haley@TomSmithLand.com

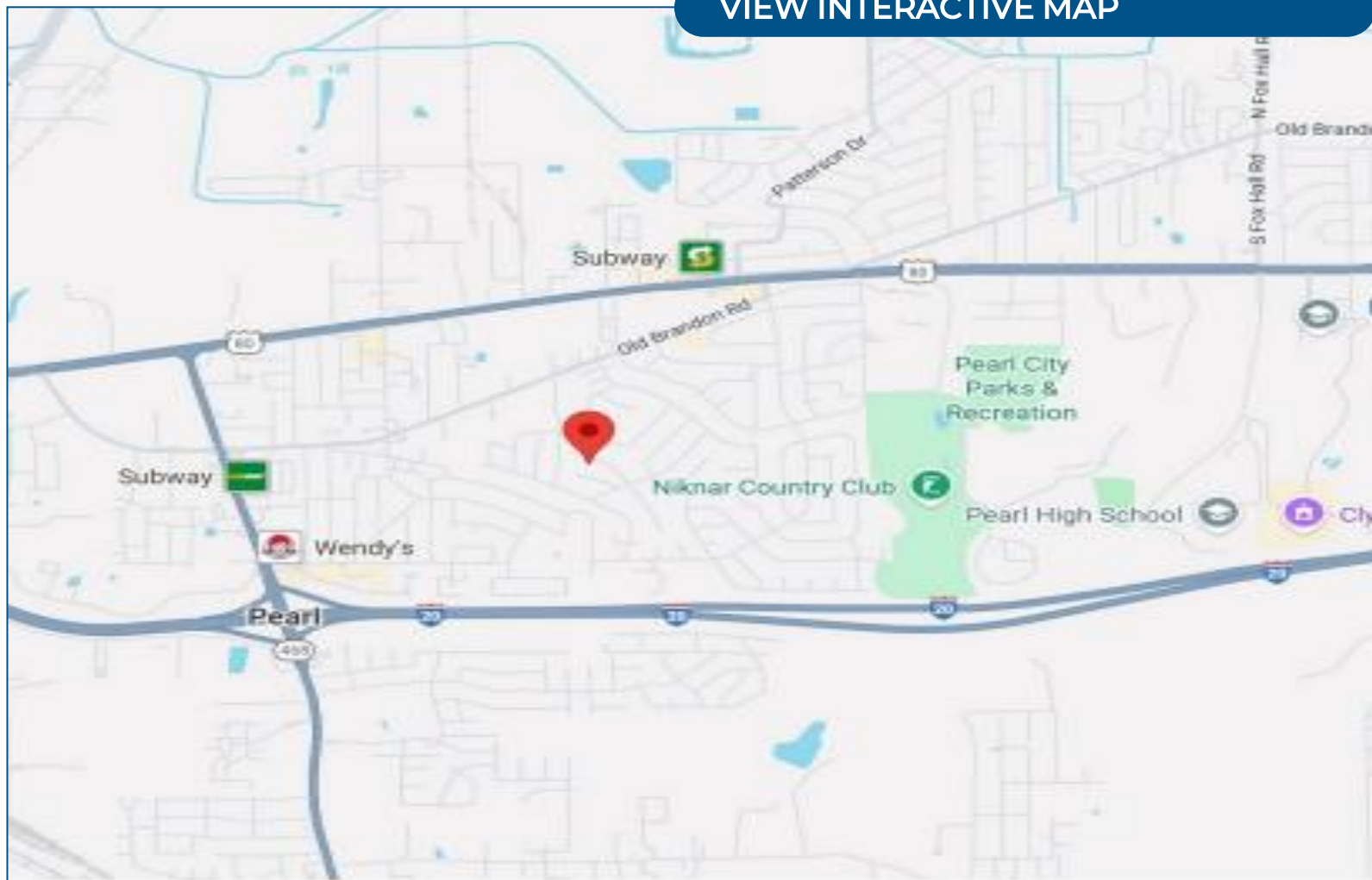
TomSmithLandandHomes.com

Information is believed to be accurate but not guaranteed.



Directional Map

[VIEW INTERACTIVE MAP](#)



Directions from the intersection of Old Brandon Road and Patton Drive: Turn onto Patton Drive and travel 0.4 miles. Turn right onto Pineridge Drive and travel 0.3 miles. Turn right onto Sycamore Cove N. After 0.1 miles, the home will be on the left.



ERIN MONSOUR
REALTOR®

O: 601.898.2772 | C: 601.951.1554
Erin@TomSmithLand.com



HALEY BELDEN
REALTOR®

O: 601.898.2772 | C: 601.209.2310
Haley@TomSmithLand.com

TomSmithLandandHomes.com

Information is believed to be accurate but not guaranteed.

