

**227± ACRES**  
**QUITMAN COUNTY, MS**  
**\$949,900**



**SMALLTOWN**  
HUNTING PROPERTIES  
& REAL ESTATE™

OFFICE (769) 888-2522 | [WWW.SMALLTOWNPROPERTIES.COM](http://WWW.SMALLTOWNPROPERTIES.COM)



# THE QUITMAN 227

## PROPERTY PROFILE

### LOCATION:

- Hwy 278  
Marks, MS 38646
- Quitman County
- 19.8± Miles W of Batesville
- 45± Miles SW of Oxford
- 62± Miles SW of Memphis

### PROPERTY USE:

- Recreational
- Trophy Deer and Duck Hunting
- Investment
- Potential Campsite

### COORDINATES:

- 34.2622, -90.278

### PROPERTY INFORMATION:

- 227± Total Acres
- 176.33± Acres Enrolled in CRP
- Hardwood & Pine Timber
- Wildlife Plots with Stands
- Duck Holes
- Utilities Nearby

### TAX INFORMATION:

- Parcel: 1280270000000003
- 2024 Taxes: \$631.63



**SMALLTOWN**  
HUNTING PROPERTIES  
& REAL ESTATE<sup>SM</sup>

**MICHAEL OSWALT, ALC**

PRINCIPAL BROKER, MS

EXECUTIVE BROKER, AR

DESIGNATED BROKER, MO

C: 662-719-3967

O: 769-888-2522

[michael@smalltownproperties.com](mailto:michael@smalltownproperties.com)

4848 Main St. - Flora, MS 39071



# WELCOME TO THE QUITMAN 227

**WELCOME TO THE QUITMAN 227, LOCATED JUST NORTH OF MARKS, IN THE HEART OF THE MISSISSIPPI DELTA.** Zoom out on the aerial map to see that the Quitman 227 sits within a large section of land totaling nearly 7,500 acres. This area produces trophy deer and incredible duck hunting, year after year. The 227± acre property is made up of bottomland hardwood timber, a small area of planted pine timber, wildlife plots, and duck holes. If you're looking for a recreational tract in the northern Mississippi Delta, this Quitman County tract needs to be on your list!

As you enter the property off the north side of Highway 278, you will find a perimeter road that will lead you around the entire property. As you ride, you'll see multiple wildlife plots equipped with box stands and two water-controlled duck holes, with one having a sled blind in place. A generator-powered well services the two duck holes for guaranteed water on those dry falls. The deer and duck hunting in the Mississippi Delta can be as good as anywhere during the winter months. The deer numbers in this area are incredible, and the duck hunting in this general area is solid as well. Be sure to look through the trail camera and kill pictures.



**SMALLTOWN**  
HUNTING PROPERTIES  
& REAL ESTATE<sup>SM</sup>

**MICHAEL OSWALT, ALC**

PRINCIPAL BROKER, MS

EXECUTIVE BROKER, AR

DESIGNATED BROKER, MO

C: 662-719-3967

O: 769-888-2522

[michael@smalltownproperties.com](mailto:michael@smalltownproperties.com)

4848 Main St. - Flora, MS 39071





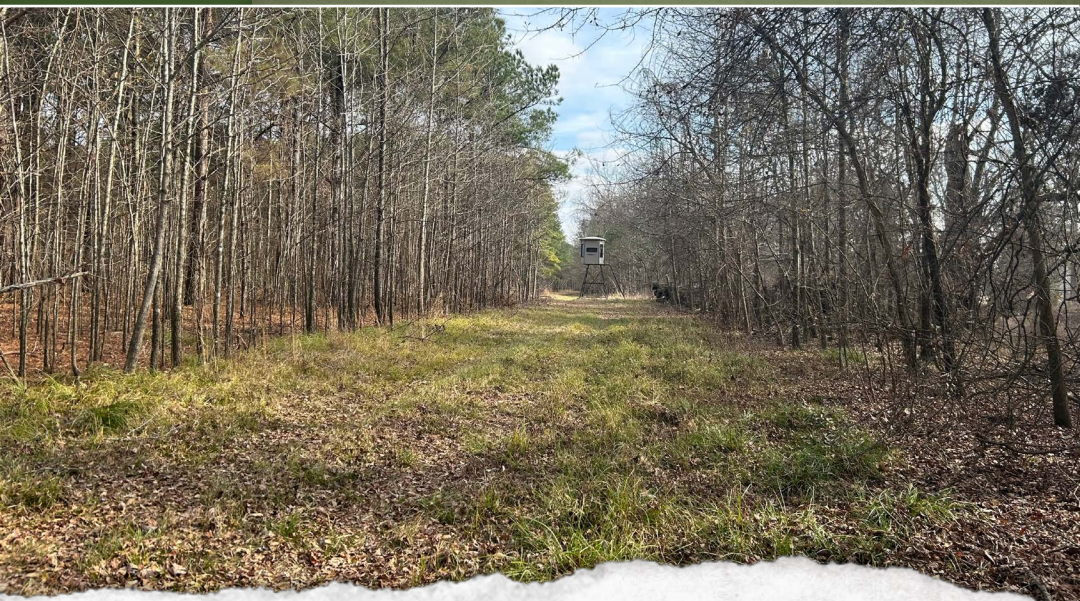
# MORE ABOUT THE QUITMAN 227

Of the 227± acre tract, approximately 176.33 acres are enrolled in CRP (Conservation Reserve Program). The contract is paying \$16,848.00 annually through 9/30/2033. This income can help offset a payment or help with the maintenance, upkeep, and/or taxes on the property.

For those looking to build a camp, water and power are available along the highway. The location is convenient, being just north of Marks, 45± miles southwest of Oxford, and roughly 62 miles southwest of Memphis, TN.

The Mississippi Delta is known for its fertile soils, trophy whitetail hunting, and duck hunting, and the Quitman 227 is no different.

**If you're in search of an easily accessible deer and duck combo in the northern Mississippi Delta, contact Michael Oswalt today to schedule a private tour!**



**SMALLTOWN**  
HUNTING PROPERTIES  
& REAL ESTATE<sup>SM</sup>

**MICHAEL OSWALT, ALC**

PRINCIPAL BROKER, MS

EXECUTIVE BROKER, AR

DESIGNATED BROKER, MO

C: 662-719-3967

O: 769-888-2522

[michael@smalltownproperties.com](mailto:michael@smalltownproperties.com)

4848 Main St. - Flora, MS 39071



**227± ACRES**

**QUITMAN COUNTY, MISSISSIPPI**



**SMALLTOWN**  
HUNTING PROPERTIES  
& REAL ESTATE<sup>SM</sup>

**MICHAEL OSWALT, ALC**

PRINCIPAL BROKER, MS

EXECUTIVE BROKER, AR

DESIGNATED BROKER, MO

C: 662-719-3967

O: 769-888-2522

[michael@smalltownproperties.com](mailto:michael@smalltownproperties.com)

4848 Main St. - Flora, MS 39071



**227± ACRES**

**QUITMAN COUNTY, MISSISSIPPI**



**SMALLTOWN**  
HUNTING PROPERTIES  
& REAL ESTATE<sup>SM</sup>

**MICHAEL OSWALT, ALC**

*PRINCIPAL BROKER, MS*

*EXECUTIVE BROKER, AR*

*DESIGNATED BROKER, MO*

**C: 662-719-3967**

**O: 769-888-2522**

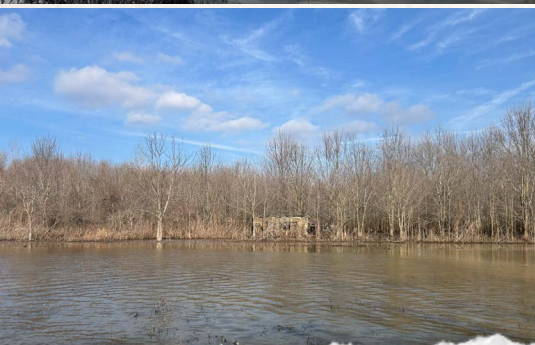
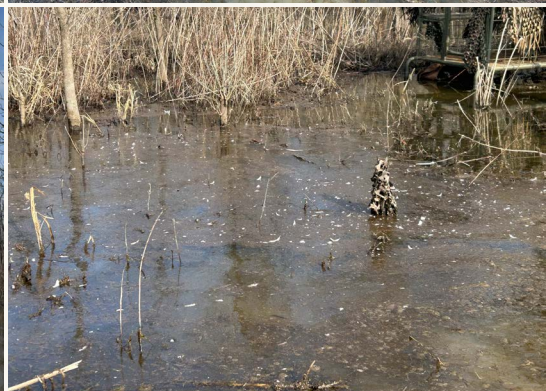
**[michael@smalltownproperties.com](mailto:michael@smalltownproperties.com)**

**4848 Main St. - Flora, MS 39071**



**227± ACRES**

**QUITMAN COUNTY, MISSISSIPPI**



**SMALLTOWN**  
HUNTING PROPERTIES  
& REAL ESTATE<sup>SM</sup>

**MICHAEL OSWALT, ALC**

PRINCIPAL BROKER, MS

EXECUTIVE BROKER, AR

DESIGNATED BROKER, MO

C: 662-719-3967

O: 769-888-2522

[michael@smalltownproperties.com](mailto:michael@smalltownproperties.com)

4848 Main St. - Flora, MS 39071



227± ACRES

QUITMAN COUNTY, MISSISSIPPI



**SMALLTOWN**  
HUNTING PROPERTIES  
& REAL ESTATE<sup>SM</sup>

**MICHAEL OSWALT, ALC**

PRINCIPAL BROKER, MS

EXECUTIVE BROKER, AR

DESIGNATED BROKER, MO

C: 662-719-3967

O: 769-888-2522

[michael@smalltownproperties.com](mailto:michael@smalltownproperties.com)

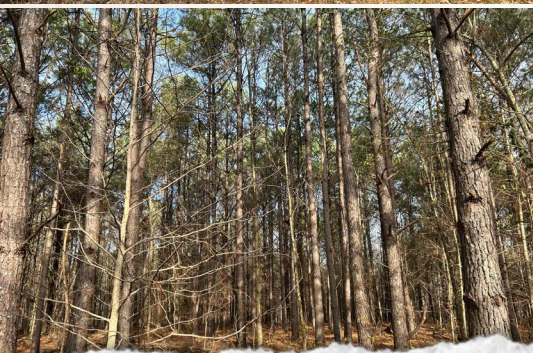
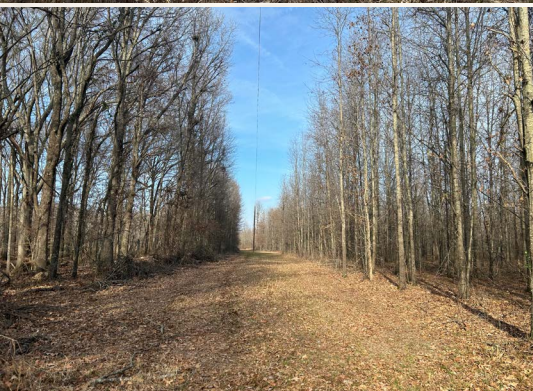
4848 Main St. - Flora, MS 39071





**227± ACRES**

**QUITMAN COUNTY, MISSISSIPPI**



**SMALLTOWN**  
HUNTING PROPERTIES  
& REAL ESTATE<sup>SM</sup>

**MICHAEL OSWALT, ALC**

PRINCIPAL BROKER, MS

EXECUTIVE BROKER, AR

DESIGNATED BROKER, MO

C: 662-719-3967

O: 769-888-2522

[michael@smalltownproperties.com](mailto:michael@smalltownproperties.com)

4848 Main St. - Flora, MS 39071



227± ACRES

QUITMAN COUNTY, MISSISSIPPI



**SMALLTOWN**  
HUNTING PROPERTIES  
& REAL ESTATE<sup>SM</sup>

**MICHAEL OSWALT, ALC**

PRINCIPAL BROKER, MS

EXECUTIVE BROKER, AR

DESIGNATED BROKER, MO

C: 662-719-3967

O: 769-888-2522

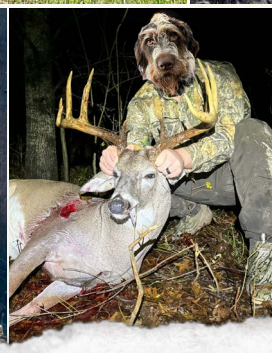
[michael@smalltownproperties.com](mailto:michael@smalltownproperties.com)

4848 Main St. - Flora, MS 39071



227± ACRES

QUITMAN COUNTY, MISSISSIPPI



**SMALLTOWN**  
HUNTING PROPERTIES  
& REAL ESTATE<sup>SM</sup>

**MICHAEL OSWALT, ALC**

PRINCIPAL BROKER, MS

EXECUTIVE BROKER, AR

DESIGNATED BROKER, MO

C: 662-719-3967

O: 769-888-2522

[michael@smalltownproperties.com](mailto:michael@smalltownproperties.com)

4848 Main St. - Flora, MS 39071





## SOIL MAP



SOIL CODE	SOIL DESCRIPTION	ACRES	%	CPI	NCCPI	CAP
Da	Dowling clay and silty clay (sharkey)	102.8	44.79	0	40	5w
Fe	Forestdale silty clay loam, nearly level phase	62.39	27.18	0	64	3w
Fg	Forestdale silty clay loam, gently sloping phase	20.52	8.94	0	63	3w
Dc	Dubbs fine sandy loam, gently sloping phase	18.04	7.86	0	89	2e
Dg	Dundee fine sandy loam, nearly level phase	17.39	7.58	0	85	2w
Fc	Forestdale silt loam, nearly level phase	5.63	2.45	0	65	3w
Dn	Dundee silty clay loam, 0 to 2 percent slopes, rarely flooded	2.63	1.15	0	85	2e
W	Water	0.11	0.05	0	-	-
Dk	Dundee silt loam, 0 to 2 percent slopes, rarely flooded	0.05	0.02	0	88	2w
TOTALS		229.56 <sup>(*)</sup>	100%	-	56.96	3.73



**SMALLTOWN**  
HUNTING PROPERTIES  
& REAL ESTATE<sup>SM</sup>

**MICHAEL OSWALT, ALC**

PRINCIPAL BROKER, MS

EXECUTIVE BROKER, AR

DESIGNATED BROKER, MO

C: 662-719-3967

O: 769-888-2522

michael@smalltownproperties.com

4848 Main St. - Flora, MS 39071





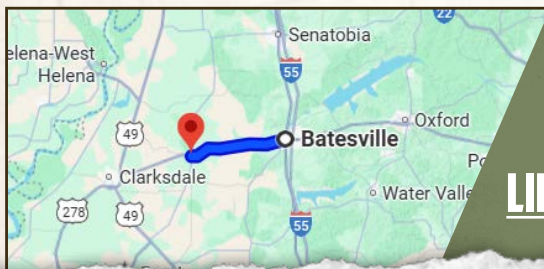
227± ACRES

QUITMAN COUNTY, MISSISSIPPI

land **id.** LINK



TOPOGRAPHY MAP



Directions from Batesville, MS: Travel 19.7 miles on US-278 W to the property on the right.

[LINK TO GOOGLE MAP DIRECTIONS](#)



**SMALLTOWN**  
HUNTING PROPERTIES  
& REAL ESTATE<sup>SM</sup>

**MICHAEL OSWALT, ALC**

PRINCIPAL BROKER, MS

EXECUTIVE BROKER, AR

DESIGNATED BROKER, MO

C: 662-719-3967

O: 769-888-2522

[michael@smalltownproperties.com](mailto:michael@smalltownproperties.com)

4848 Main St. - Flora, MS 39071

