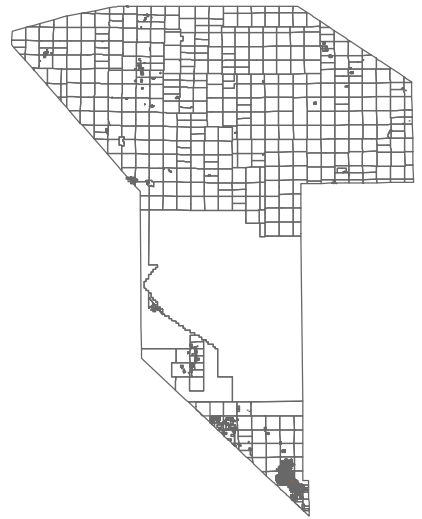


T19S, R53E
POR. OF SEC. 9



030-11

COUNTY LOCATOR



LEGEND

* DENOTES LOTS THAT EXTEND TO THE MIDDLE OF THE STREET.

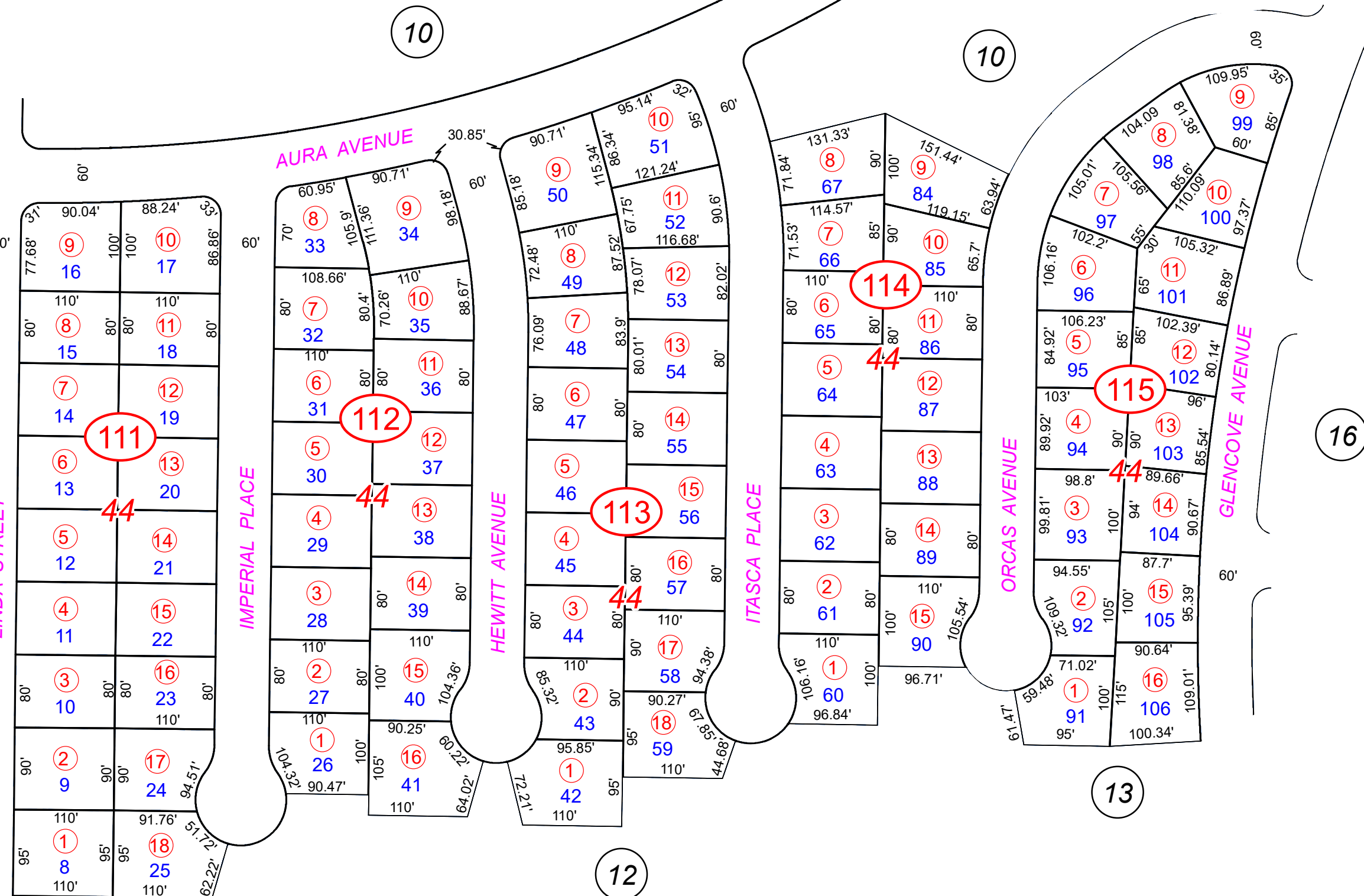
Plot Date: 4/15/2020

PREPARED BY

**NYE COUNTY
ASSESSOR'S OFFICE**
Email: assessor@co.nye.nv.us



**CALVADA VALLEY NORTH
UNIT 1**



NOTE: THIS PLAT IS FOR ASSESSMENT USE ONLY AND DOES NOT REPRESENT A SURVEY. NO LIABILITY IS ASSUMED AS TO THE ACCURACY OF THE DATA DELINEATED HEREON.