

# Hamilton County 40 Acre Farm and Recreation

0 SW Lake Baisden Loop, Jasper, Florida 32052

---

Shea R. Booster  
541-771-1177  
[shea@saundersrealestate.com](mailto:shea@saundersrealestate.com)







## PROPERTY OVERVIEW



### Sale Price

\$220,000

### Offering Summary

|                |   |
|----------------|---|
| Acreage:       | 39.92 Acres   |
| Price / Acre:  | \$5,511   |
| State:         | Florida   |
| City:          | Jasper  |
| County:        | Hamilton  |
| Property Type: | Farms and Cropland<br>Hunting and Recreational Land |

### Property Overview

Located just South of Jasper in Hamilton County, this beautiful ±40-acre property offers the perfect balance of productivity and natural beauty. With approximately 28 acres of highly productive farmland—currently planted in peanuts and historically used for both hay and peanuts—the property provides strong agricultural potential. The remaining acreage features a scenic mix of mature hardwood forest and a little over an acre of wetlands, creating excellent habitat for deer, turkey, and other wildlife. Whether you're looking for a working farm, a recreational retreat, or a combination of both, this property delivers a unique opportunity in North Florida.

This property sits in a prime location just south of Jasper with excellent access to I-75, making travel quick and convenient. From the land, you can be in South Georgia within minutes or reach larger Florida municipalities such as Lake City and Gainesville with ease. The combination of rural privacy and proximity to major roadways ensures both practicality for agricultural operations and convenience for those seeking a country lifestyle with nearby city amenities.



## SPECIFICATIONS & FEATURES



## Specifications & Features

**Uplands / Wetlands:** Uplands: 38.6 ± acres Wetlands: 1.32 ± acres

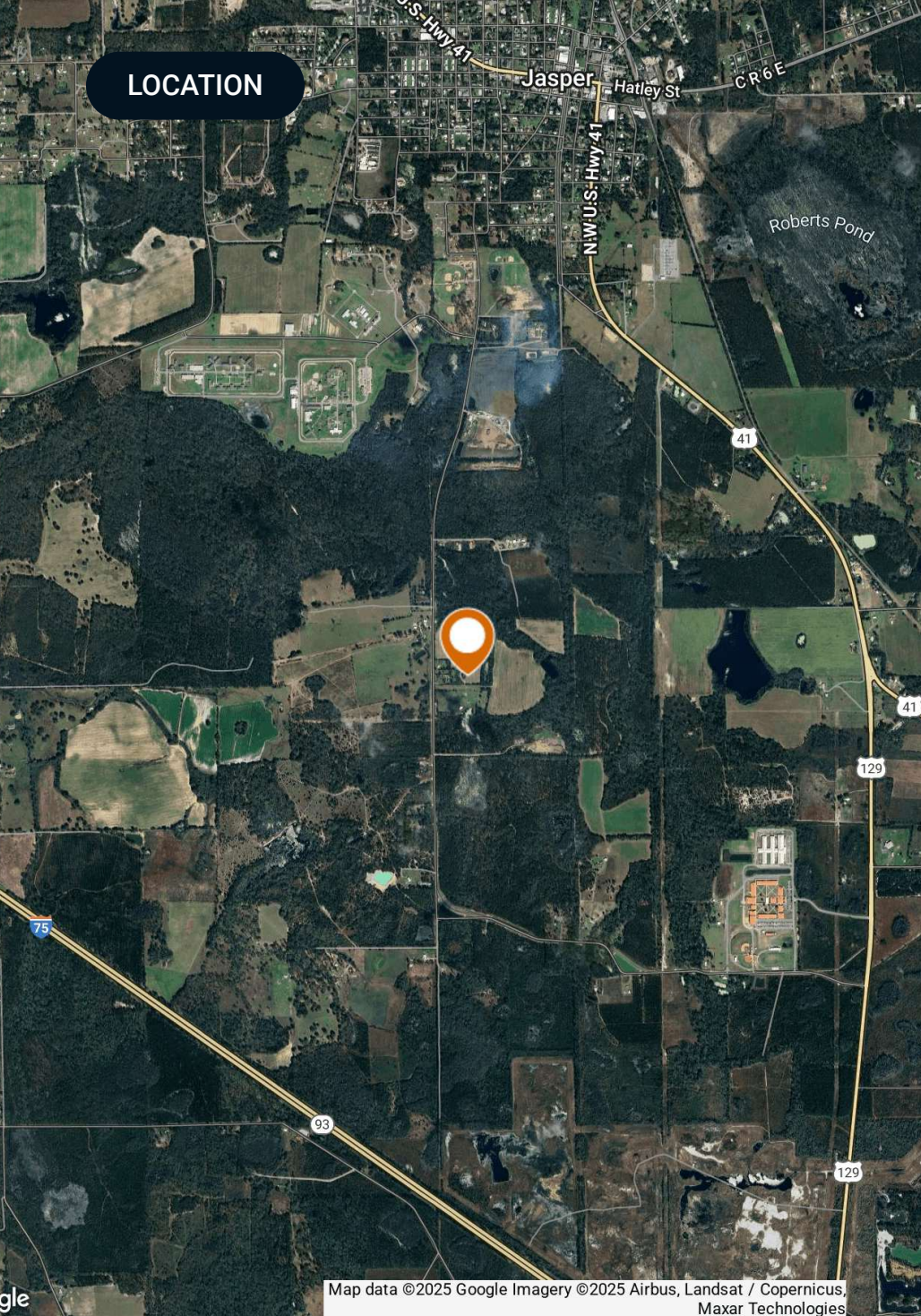
**Soil Types:** Blanton Sand  
Valdosta Sand  
Wadley Sand  
Mascotte Soil

**Taxes & Tax Year:** 2024: \$193.05

**Road Frontage:** 740' on SW 107th Ave

**Nearest Point of Interest:** 1.5 miles to Jasper  
30 miles to Lake City  
35 miles to Valdosta  
70 miles to Gainesville





## Location & Driving Directions

Parcel: 2200-020

GPS: 30.4901713, -82.9534257

### Driving Directions:

- Exit I-75 onto US 129
- Continue for approximately 1.6 miles
- Turn left onto Robinson Road
- Continue on as the road bends North
- Property will be on the right in approximately 2.4 miles.

### Showing Instructions:

Call Listing Agent



## PROPERTY OUTLINE



### Overview

Parcel (selected)



©2025 Saunders Real Estate® Any information displayed should be verified and is not guaranteed to be accurate by Saunders Real Estate. You may not copy or use this material without written consent from Saunders Real Estate.



# SOILS MAP



## Soils

- Parcel (selected)
- Soils

| MUID  | COMPONENT NAME | ACRES |
|-------|----------------|-------|
| 5     | Blanton        | 13.68 |
| 16    | Valdosta       | 9.16  |
| 26    | Mascotte       | 7.07  |
| 18    | Wadley         | 3.90  |
| 27    |                | 2.40  |
| 19    | Valdosta       | 2.06  |
| 2     | Albany         | 1.20  |
| 10    | Lowndes        | 0.75  |
| 99    | Water          | 0.47  |
| TOTAL |                | 40.69 |



©2025 Saunders Real Estate® Any information displayed should be verified and is not guaranteed to be accurate by Saunders Real Estate. You may not copy or use this material without written consent from Saunders Real Estate.





## WETLANDS MAP



## Wetlands NWI

-  Parcel (selected)
-  Wetlands NWI: Palustrine
-  Wetlands NWI: Riverine

| CODE                 | DESCRIPTION     | ACRES        |
|----------------------|-----------------|--------------|
| R5UBH                | Riverine        | 0.84         |
| R4SBC                | Riverine        | 0.28         |
| PUBHh                | Freshwater Pond | 0.21         |
| <b>TOTAL UPLAND</b>  |                 | <b>39.36</b> |
| <b>TOTAL WETLAND</b> |                 | <b>1.33</b>  |
| <b>TOTAL</b>         |                 | <b>40.69</b> |





ADDITIONAL PHOTOS





ADDITIONAL PHOTOS







**SAUNDERS**  
REAL ESTATE



**SAUNDERS**  
LAND



**SAUNDERS**  
COMMERCIAL

## Serving the Southeast

At Saunders Real Estate, we deliver full-service real estate solutions across the Southeast, built on more than 30 years of trusted experience. Our dedicated teams—experts in both land and commercial real estate—offer tailored guidance backed by deep regional insight and a proven track record. We believe that successful outcomes start with strong relationships built on trust and a shared commitment to your goals.



877-518-5263 • [info@saundersrealestate.com](mailto:info@saundersrealestate.com)