

Spring Mountain Estate

Top Of Spring Mountain, Dardanelle, Arkansas

David Hill
479-879-1476
david.hill@saundersrealestate.com
AR #SA00096860

Greg L. Hay, ACF, CF, RF
501-470-5091
greg@saundersrealestate.com
AR #EB00066205





Sale Price

\$10,188,750

Offering Summary

Acreage:	1,675.5 Acres
Price / Acre:	\$6,081
State:	Arkansas
City:	Dardanelle
County:	Yell & Logan
Property Type:	Acreage and Estates Timberland Hunting and Recreational Land

Property Overview

Own an entire mountain. Spring Mountain is 1,675.5 ± contiguous acres spanning Yell & Logan Counties just outside Dardanelle, sharing a boundary with Mount Nebo State Park. From multiple overlooks you'll take in sweeping Ozark views toward Lake Dardanelle and Arkansas Nuclear One, yet you're minutes from town. The Monument Trail mountain-bike system runs to the property edge, creating a natural opportunity for future trail connectivity.

The landscape is a showpiece: mature planted pine interwoven with natural hardwoods, dramatic rock outcrops, and miles of well-maintained interior roads. Habitat here is the real deal - whitetail deer, black bear, and turkey - making this a turnkey sportsman's retreat with long-term timber upside. A handful of previously sold homesites contribute \$600/year each toward road maintenance, supporting ongoing stewardship of the network.

At the summit, a 1/2-mile public grass airstrip offers fly-in convenience and must remain in place in perpetuity. Utilities serve the improvements, and electric service runs all the way to the top of the mountain.

Improvements include a 2,970 SF two-story trophy lodge and an 1,800 SF two-story residence with garage - both convey fully furnished. The lodge showcases an extraordinary trophy collection (taxidermy included), ideal for entertaining, corporate retreats, or a private family compound.

Whether your vision is a trophy estate, destination recreation hub, conservation legacy, or a timber-backed investment, Spring Mountain delivers scale, adjacency, and drama almost never seen on the open market.

PROPERTY DESCRIPTION



Location Description

Spring Mountain is located in Yell County just outside Dardanelle, immediately west of - and sharing a boundary with Mount Nebo State Park. The Monument Trail mountain-bike network runs to the property line, creating a natural opportunity for future connectivity (subject to approvals). From the lodge and residence, there are clear views north toward Lake Dardanelle and Arkansas Nuclear One, while everyday services in Dardanelle and Russellville are a short drive away.

Site Description

The property comprises 1,675.5 ± contiguous acres forming a single, privately controlled massif in Yell and Logan Counties. The tract is heavily timbered in mature planted pine interspersed with natural hardwood draws.

Tree Breakdown:

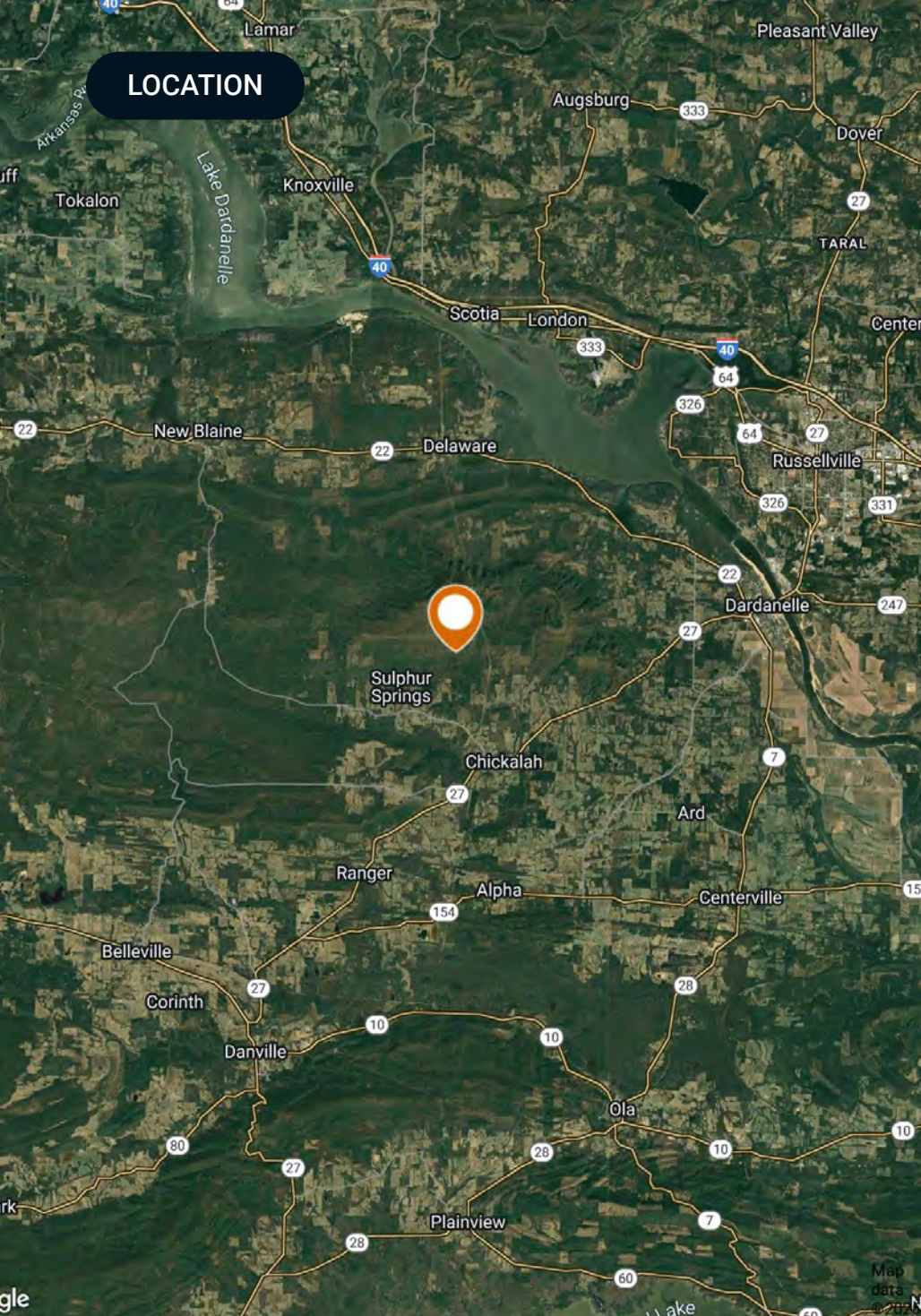
40% Hardwood

39% Pine

13% mixed hardwood/pine

Topography is mountainous with long ridgelines, benches, and multiple scenic overlooks; dramatic rock outcrops occur throughout. A summit plateau hosts a ½-mile public grass airstrip (to remain in perpetuity). Improvements include a 2,970 SF two-story lodge and an 1,800 SF two-story residence with garage - both convey fully furnished.

An extensive, well-maintained internal road network provides access across the property; previously sold homesites contribute \$600/year each to road maintenance. Utilities serve the improvements (power/water; on-site septic). Adjoins Mount Nebo State Park with the Monument Trail mountain-bike system approaching the boundary, creating natural long-term recreation and conservation optionality. Mineral rights do not convey.



Location & Driving Directions

Parcel:	Multiple
GPS:	35.2184201, -93.3012143
Driving Directions:	Call agent for driving directions.
Showing Instructions:	Call agent for showing appointment.







TROPHY LODGE



TROPHY LODGE INTERIOR



RESIDENCE



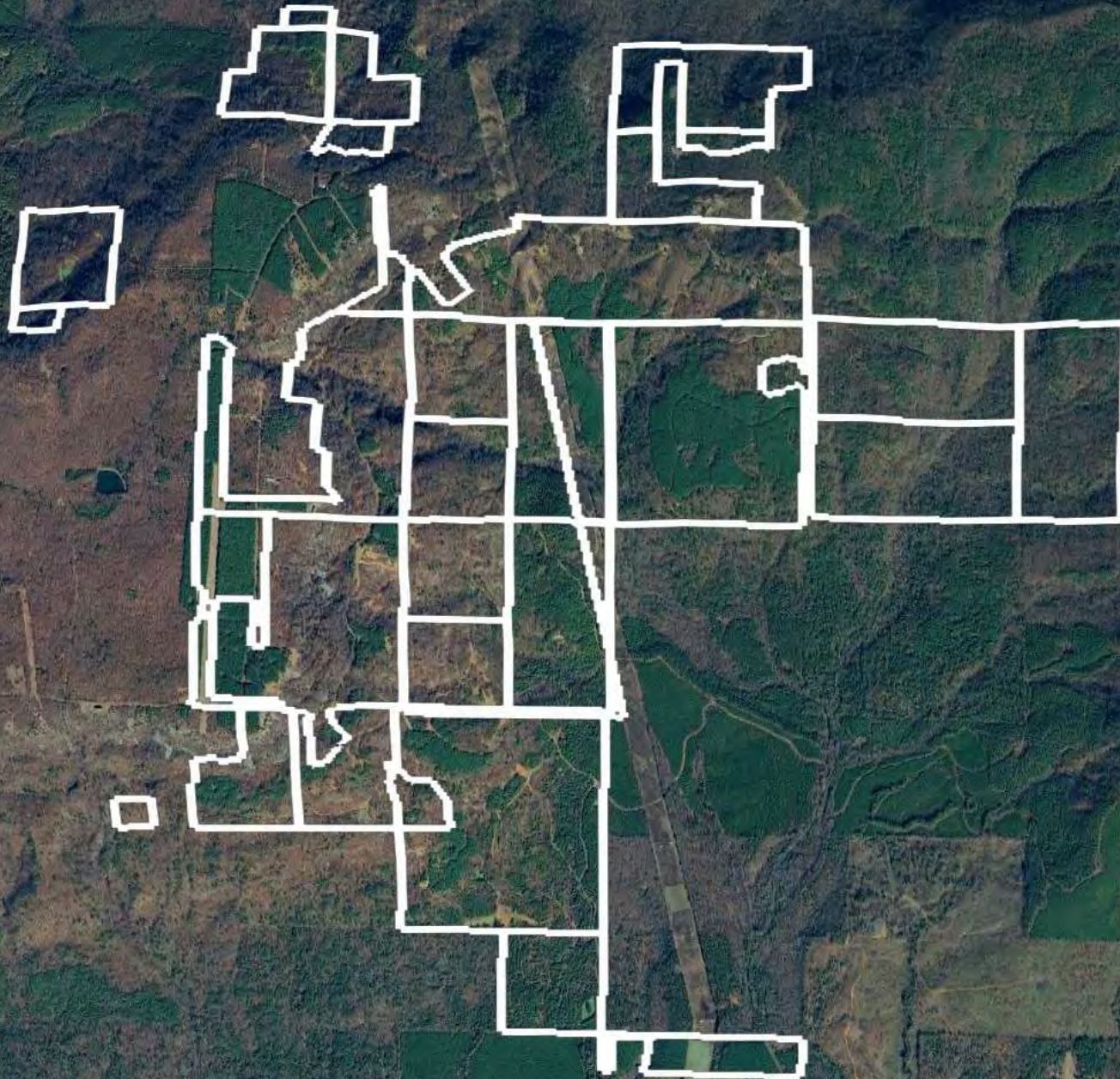
RESIDENCE INTERIOR



1/2 MILE AIRSTRIP

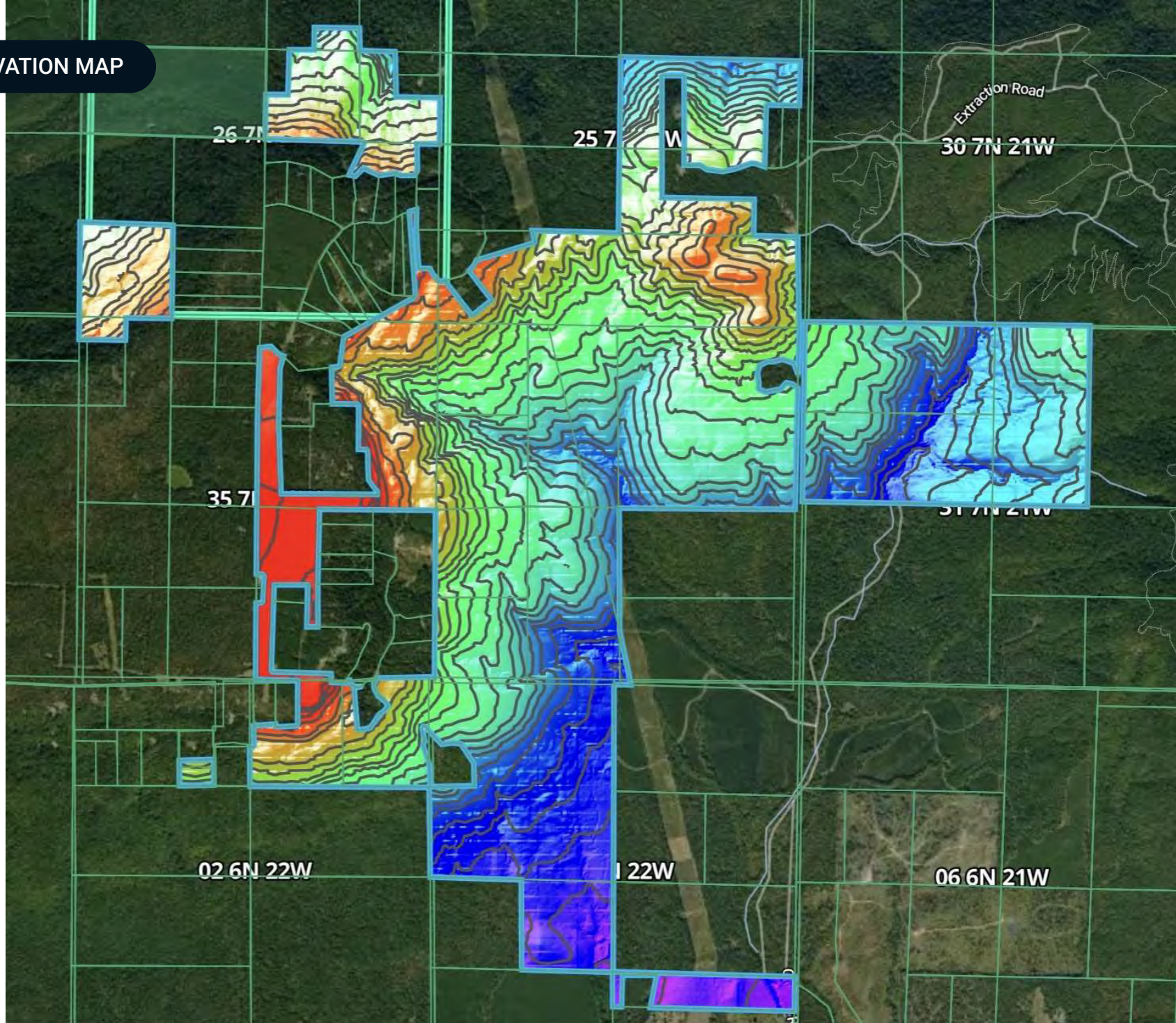


PROPERTY OUTLINE



Mount Nebo State Park

ELEVATION MAP



ADDITIONAL PHOTOS



ADDITIONAL PHOTOS



ADDITIONAL PHOTOS



ADDITIONAL PHOTOS



ADVISOR BIOGRAPHY



David Hill

Regional Managing Director

david.hill@saundersrealestate.com

Direct: **479-582-4113** | Cell: **479-879-1476**

AR #SA00096860

Professional Background

David Hill is the Regional Managing Director and Land Advisor at Saunders Real Estate in Fayetteville, Arkansas, where he leads the firm's efforts across the entire state.

With over a decade of experience in sales and business development, David brings a strategic and client-focused approach to land brokerage. Before transitioning into real estate, he spent three years selling oil and gas equipment, and later helped launch and grow a recruiting agency, scaling the team from four to more than seventy employees.

David works closely with landowners, investors, and developers to source opportunities that fit their unique goals. He values long-term relationships over transactions and has built a strong network of clients who trust his guidance and local expertise.

A University of Arkansas graduate, David earned a Marketing degree from the Sam M. Walton College of Business. He was an active member of the Omega Omega chapter of Sigma Chi, where he built friendships and connections that continue to shape his personal and professional life.

David's faith is central to everything he does, and he brings those values into his work and relationships. He lives in Fayetteville with his wife, Alex, their daughter, Halle, and their bird dog, Tess. When he's not working, he enjoys golfing, hunting, fishing, and spending time with his family.

David specializes in:

- Row Crop Farmland
- Residential Development Land
- Transitional Development Land
- Cattle Ranches
- Recreational & Hunting Properties
- Timberland
- Poultry Farms

ADVISOR BIOGRAPHY



Greg L. Hay, ACF, CF, RF

Senior Advisor

greg@saundersrealestate.com

Direct: **877-518-5263 x350** | Cell: **501-470-5091**

AR #EB00066205

Professional Background

Greg L. Hay, ACF, CF, RF is a Senior Advisor at Saunders Real Estate.

Based in Arkansas, Greg is also a Consulting Forester and sole proprietor of Hay Forestry LLC. Prior to starting his consulting firm, he served as a Reforestation Advisor for ArborGen (2020-2024). Greg's extensive background spans various roles in forestry, sales, and silviculture.

Greg attended Stephen F. Austin State University where he was elected to the Alpha Zeta Chapter of Xi Sigma Pi (National Forestry Honor Society) in 1975 and earned his B.S. in Forest Management in 1977. Later in his career, he pursued additional post graduate work in graded curriculums at Clemson, Mississippi State, and West Virginia universities to earn a Certified Silviculturist credential from the US Forest Service (USFS). Early in his career, Greg worked as a skidder operator on a logging crew and an inventory technician, later serving on a Regional Reinforcement Fire Suppression Crew for the USFS, fighting fires in Arizona, New Mexico, Washington, Oregon, and Minnesota.

Greg has a long history of service to the Society of American Foresters (SAF), having been an active member since 1977. He served the organization in many capacities throughout the Ouachita Region and was elected SAF "Fellow" in 2000. In 2024, he received the Lifetime Achievement Award from the Ouachita Society of American Foresters (OSAF) and was inducted into the Arkansas Foresters Hall of Fame. Greg is also an SAF Certified Forester.

Greg is also a long-time board member of the Arkansas Forestry Association (AFA), having served various roles throughout his membership, including as 2025 President. He has been also an active member of the Association of Consulting Foresters and the Forest Landowners Association, serving various committees within these organizations. Greg is a Registered Forester in Arkansas and maintains his Real Estate License in Arkansas. He has long been a dependable sponsor of local, regional, and national meetings, having also been an invited speaker at these meetings over the years.

Greg has two sons, three grandsons, and one granddaughter. He attends Fellowship Bible Church in Conway, Arkansas. In addition, Greg is a licensed pilot (instrument-rated) with over 3,000 flight hours.

Greg specializes in:

- Timberland
- Recreational Land



SAUNDERS
REAL ESTATE



SAUNDERS
LAND



SAUNDERS
COMMERCIAL

Serving the Southeast

At Saunders Real Estate, we deliver full-service real estate solutions across the Southeast, built on more than 30 years of trusted experience. Our dedicated teams—experts in both land and commercial real estate—offer tailored guidance backed by deep regional insight and a proven track record. We believe that successful outcomes start with strong relationships built on trust and a shared commitment to your goals.



877-518-5263 • info@saundersrealestate.com