

Oakhill Airpark Tract | ±26.28 Acres

Aeronca Road | Belton, SC 29627



SALE PRICE: \$748,980.00

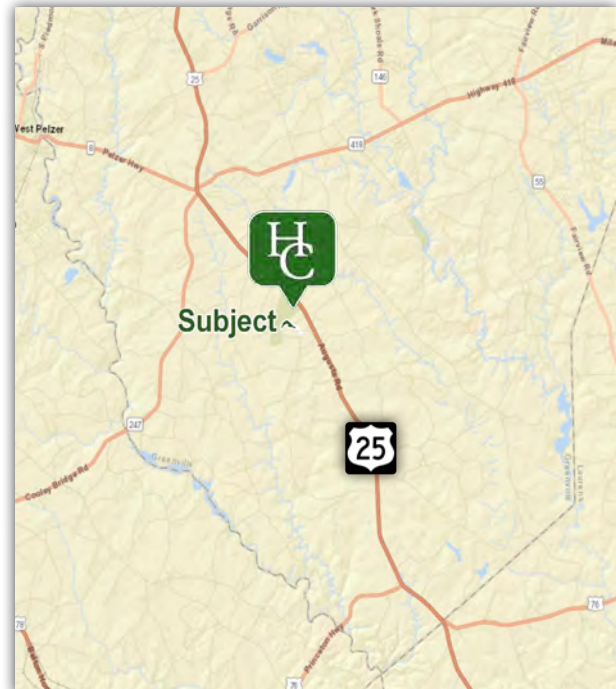


Property Features

- Greenville County Tax Map Numbers:
0588030103220, 0588030103221, 0588030103800,
0588030103700, 0588030103900, 0588030103600,
0588030103229, 0588030103202, 0588030103400
- ±5-acre pond fed by two different creeks
- ±1,215' of creek frontage
- The bulk of the property consists of mature upland hardwoods
- ±1,790' of Aeronca Road frontage
- A perimeter road in excellent condition runs for nearly 0.5 acre along the northern boundary line providing excellent access to the pond, dam, and potential homesites
- ±30-minute commute from downtown Greenville
- Within fifteen minutes of Cedar Falls Park, City Scape Winery, and Happy Cow Creamery
- Shared boundary line with a ±244-acre county park ([Loretta C. Wood Park](#))
- The property includes membership in the Oakhill Airpark Property Owners Association which includes use of the airstrip (2,400' x 100') and taxiway
- Covenants and Restrictions for the POA allow for up to seven single family homes



Oakhill Airpark Property
Airstrip: 2,400' x 100'



Rusty Hamrick
+1 864 232 9040
rhamrick@naief.com

John Etheridge
+1 864 232 9040
jetheridge@naief.com

Alex Campbell
+1 864 678 5984
acampbell@naief.com

101 E Washington St
Greenville, SC 29601
huffcreekproperties.com

Property Description

Aeronca Road | Belton, SC 29627



The Oakhill Airpark tract presents a very rare opportunity to acquire a stunning ± 26.28 acre parcel that not only provides access to a private runway but also includes a beautiful creek fed five acre pond. The bulk of the property consists of mature upland hardwoods with a substantial amount of level topography suitable for up to seven homesites. An interior road in excellent condition runs for approximately ± 0.5 miles along the northern perimeter of the property providing quality access to the backside of the pond, potential homesites overlooking the pond, and the dam. A small creek runs through the interior of the property for $\pm 1,215'$ and is one of two creeks feeding the stocked pond. The property offers a convenient ± 30 minute commute from downtown Greenville and is also located within fifteen minutes of some great local amenities highlighted by Cedar Falls Park, City Scape Winery, and Happy Cow Creamery. In addition, a shared boundary line with a ± 244 acre county park (Loretta C. Wood Park) stretches for ± 0.3 miles behind the pond and dam offering a great buffer from future development.

Rusty Hamrick
+1 864 232 9040
rhamrick@naief.com

John Etheridge
+1 864 232 9040
jetheridge@naief.com

Alex Campbell
+1 864 678 5984
acampbell@naief.com

This material may contain content generated with AI assistance and publicly sourced data. NAI Earle Furman and Huff Creek Properties make every effort to verify the information but makes no warranties or representations regarding the accuracy, completeness, or reliability of the information. Independent verification of all details is strongly encouraged. Prices, terms, and availability are subject to change without prior notice.

The Timber and Recreational Land Division of NAI Earle Furman

Property Photos

Aeronca Road | Belton, SC 29627



Rusty Hamrick
+1 864 232 9040
rhamrick@naief.com

John Etheridge
+1 864 232 9040
jetheridge@naief.com

Alex Campbell
+1 864 678 5984
acampbell@naief.com

This material may contain content generated with AI assistance and publicly sourced data. NAI Earle Furman and Huff Creek Properties make every effort to verify the information but makes no warranties or representations regarding the accuracy, completeness, or reliability of the information. Independent verification of all details is strongly encouraged. Prices, terms, and availability are subject to change without prior notice.

The Timber and Recreational Land Division of NAI Earle Furman

Property Photos

Aeronca Road | Belton, SC 29627



Oakhill Airpark Property
Airstrip: 2,400' x 100'



Rusty Hamrick
+1 864 232 9040
rhamrick@naief.com

John Etheridge
+1 864 232 9040
jetheridge@naief.com

Alex Campbell
+1 864 678 5984
acampbell@naief.com

This material may contain content generated with AI assistance and publicly sourced data. NAI Earle Furman and Huff Creek Properties make every effort to verify the information but makes no warranties or representations regarding the accuracy, completeness, or reliability of the information. Independent verification of all details is strongly encouraged. Prices, terms, and availability are subject to change without prior notice.

The Timber and Recreational Land Division of NAI Earle Furman

Map Set

Aeronca Road | Belton, SC 29627

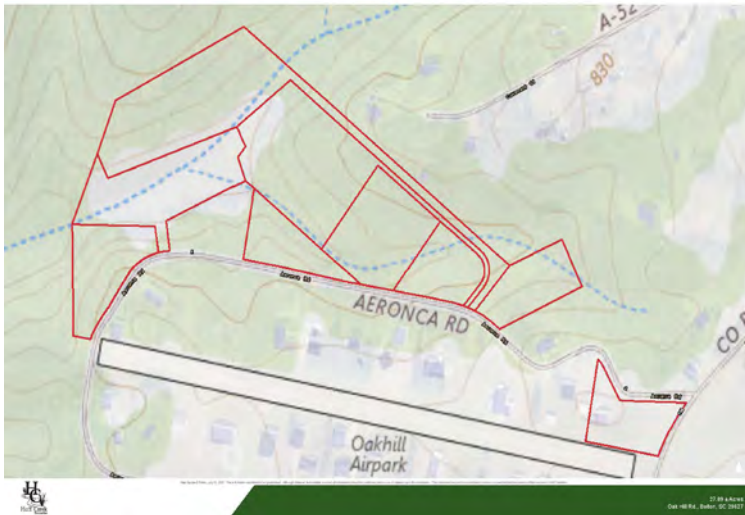
2020 Infrared



Topographical Map



Topographical Map



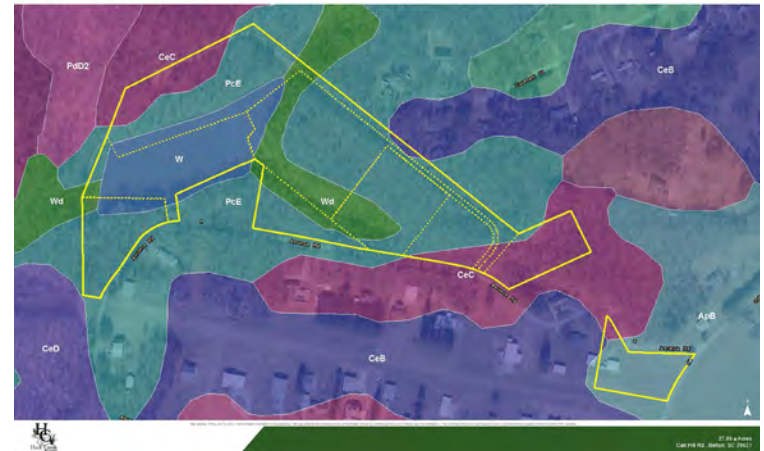
Flood Zones



National Wetlands Inv.



Soil Survey



Rusty Hamrick
+1 864 232 9040
rhamrick@naief.com

John Etheridge
+1 864 232 9040
jetheridge@naief.com

Alex Campbell
+1 864 678 5984
acampbell@naief.com

This material may contain content generated with AI assistance and publicly sourced data. NAI Earle Furman and Huff Creek Properties make every effort to verify the information but makes no warranties or representations regarding the accuracy, completeness, or reliability of the information. Independent verification of all details is strongly encouraged. Prices, terms, and availability are subject to change without prior notice.

The Timber and Recreational Land Division of NAI Earle Furman