

NC 903 - 158 Acre Tract

Robersonville, North Carolina 27871-9690

Kenneth Chesson
877-518-5263 x378
252-809-3896
kenneth@saundersrealestate.com

Robin Fleming
919-215-5621
rfleming@flemingpropinc.com

PROPERTY OVERVIEW



Sale Price

\$790,350

Offering Summary

Acreage:	158 Acres
Price / Acre:	\$5,002
State:	North Carolina
City:	Robersonville
County:	Martin
Property Type:	Timberland Farms and Cropland Hunting and Recreational Land

Property Overview

This exceptional 158-acre property offers 101 acres of productive tillable farmland, ideal for growing a variety of regional crops such as corn, wheat, soybeans, peanuts, cotton, sweet potatoes, watermelons, and sage. The remaining acreage features a balanced mix of mature hardwoods and pine, providing both timber value and outstanding wildlife habitat. Abundant deer, turkey, and ducks make this a premier hunting property, while its fertile soils and diverse land use present excellent investment potential. Rarely does a tract of this quality and size become available—act quickly, as this opportunity will not last long.



PROPERTY DESCRIPTION

Location Description

Nestled in the heart of eastern North Carolina, Robersonville offers the perfect blend of rural charm and convenient access to modern amenities. Located in Martin County, this friendly small town is surrounded by picturesque farmland, scenic woodlands, and open skies—ideal for those seeking a quieter, more relaxed lifestyle.

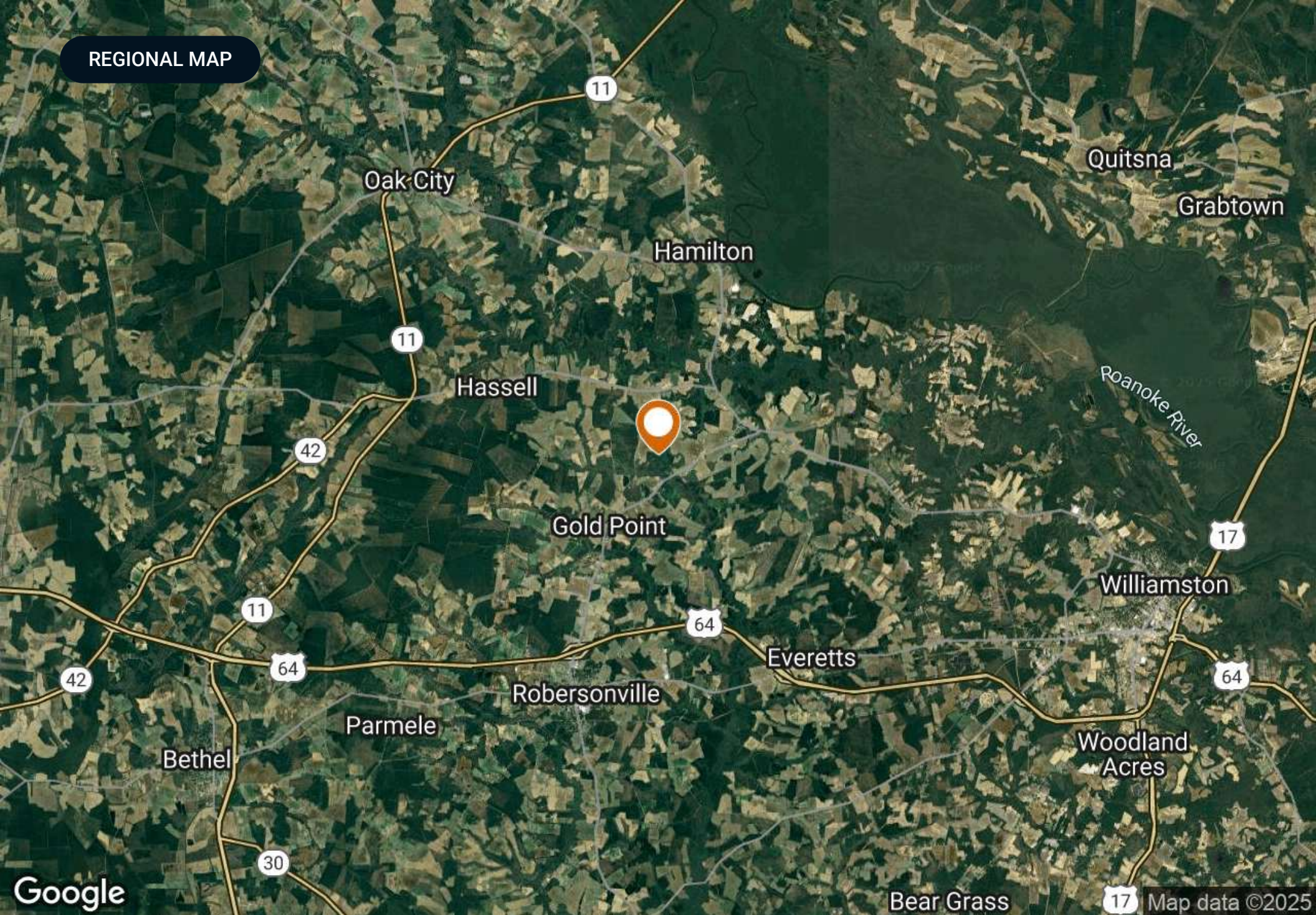
Just minutes from U.S. Highway 64, Robersonville is an easy drive to Greenville, home to East Carolina University, world-class healthcare, shopping, dining, and cultural attractions. The Outer Banks and North Carolina's beautiful beaches are only a short trip away, making weekend getaways effortless.

The area is known for its warm community spirit, low cost of living, and abundant outdoor recreation. Hunting, fishing, boating, and farming are part of everyday life here, while local festivals and farmers markets celebrate the region's agricultural heritage. Whether you're looking to establish a homestead, start a small farm, or enjoy wide-open spaces with room to grow, the Robersonville area offers a welcoming environment and a slower pace that's increasingly rare to find.

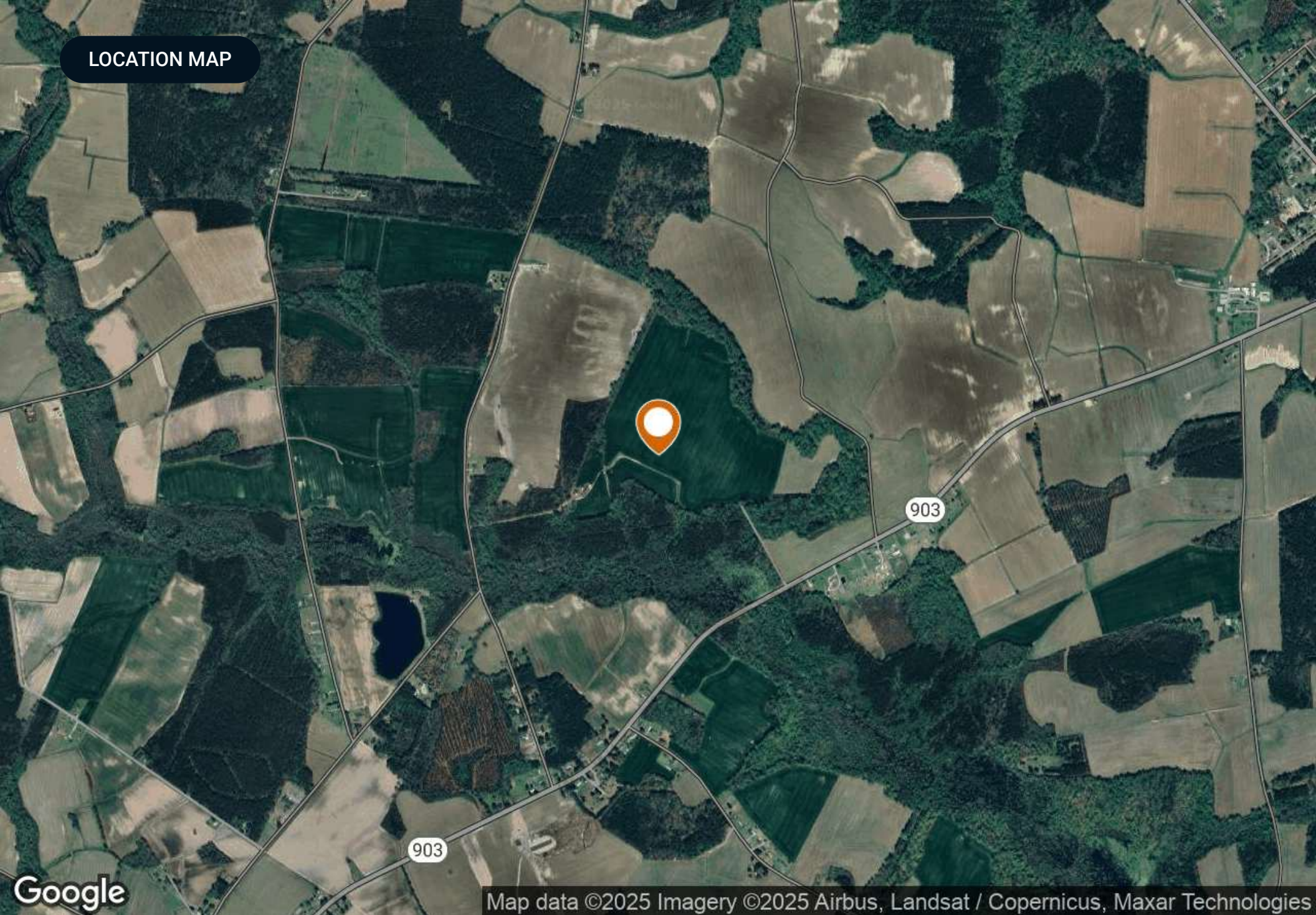
Property Highlights

- Prime location in Robersonville area
- Ample space and versatility for various uses
- Favorable zoning for development potential
- Proximity to essential amenities
- Strategic placement for long-term growth
- Opportunity for value appreciation
- Ideal for a range of development projects
- Promising investment proposition

REGIONAL MAP



LOCATION MAP



Google

Map data ©2025 Imagery ©2025 Airbus, Landsat / Copernicus, Maxar Technologies

ADDITIONAL PHOTOS



ADDITIONAL PHOTOS





SAUNDERS
REAL ESTATE



SAUNDERS
LAND



SAUNDERS
COMMERCIAL

Serving the Southeast

At Saunders Real Estate, we deliver full-service real estate solutions across the Southeast, built on more than 30 years of trusted experience. Our dedicated teams—experts in both land and commercial real estate—offer tailored guidance backed by deep regional insight and a proven track record. We believe that successful outcomes start with strong relationships built on trust and a shared commitment to your goals.



877-518-5263 • info@saundersrealestate.com