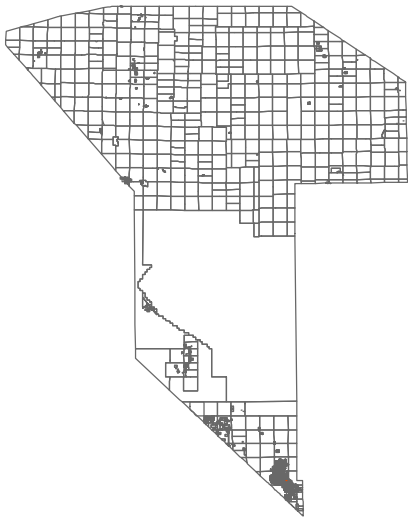


T19S, R53E  
POR. OF SEC. 14



043-24

COUNTY LOCATOR



LEGEND

\* DENOTES LOTS THAT EXTEND TO THE MIDDLE OF THE STREET.

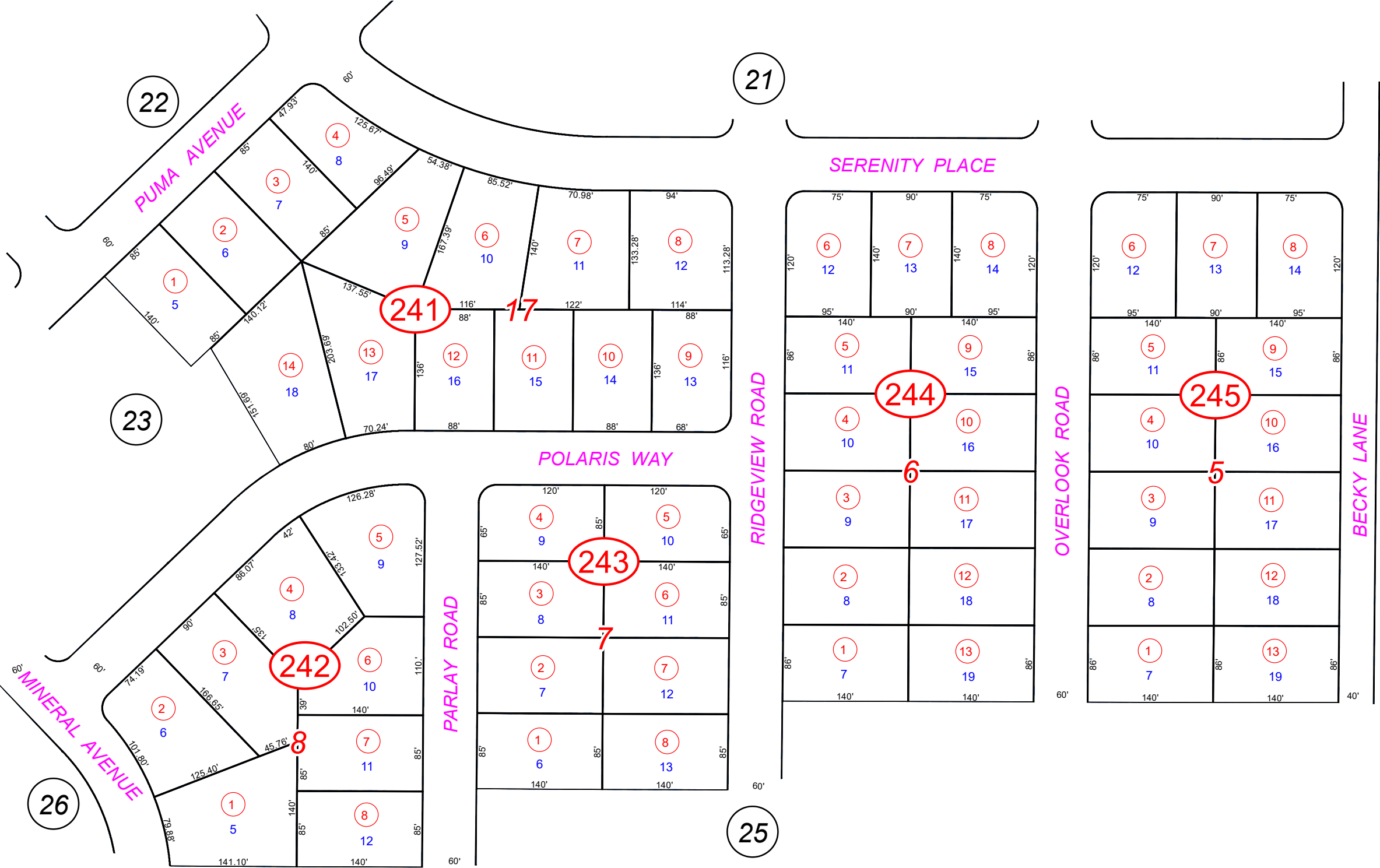
Plot Date: 4/15/2020

PREPARED BY

**NYE COUNTY  
ASSESSOR'S OFFICE**  
Email: [assessor@co.nye.nv.us](mailto:assessor@co.nye.nv.us)



**CALVADA MEADOWS  
UNIT 4**



NOTE: THIS PLAT IS FOR ASSESSMENT USE ONLY AND DOES NOT REPRESENT A SURVEY. NO LIABILITY IS ASSUMED AS TO THE ACCURACY OF THE DATA DELINEATED HEREON.