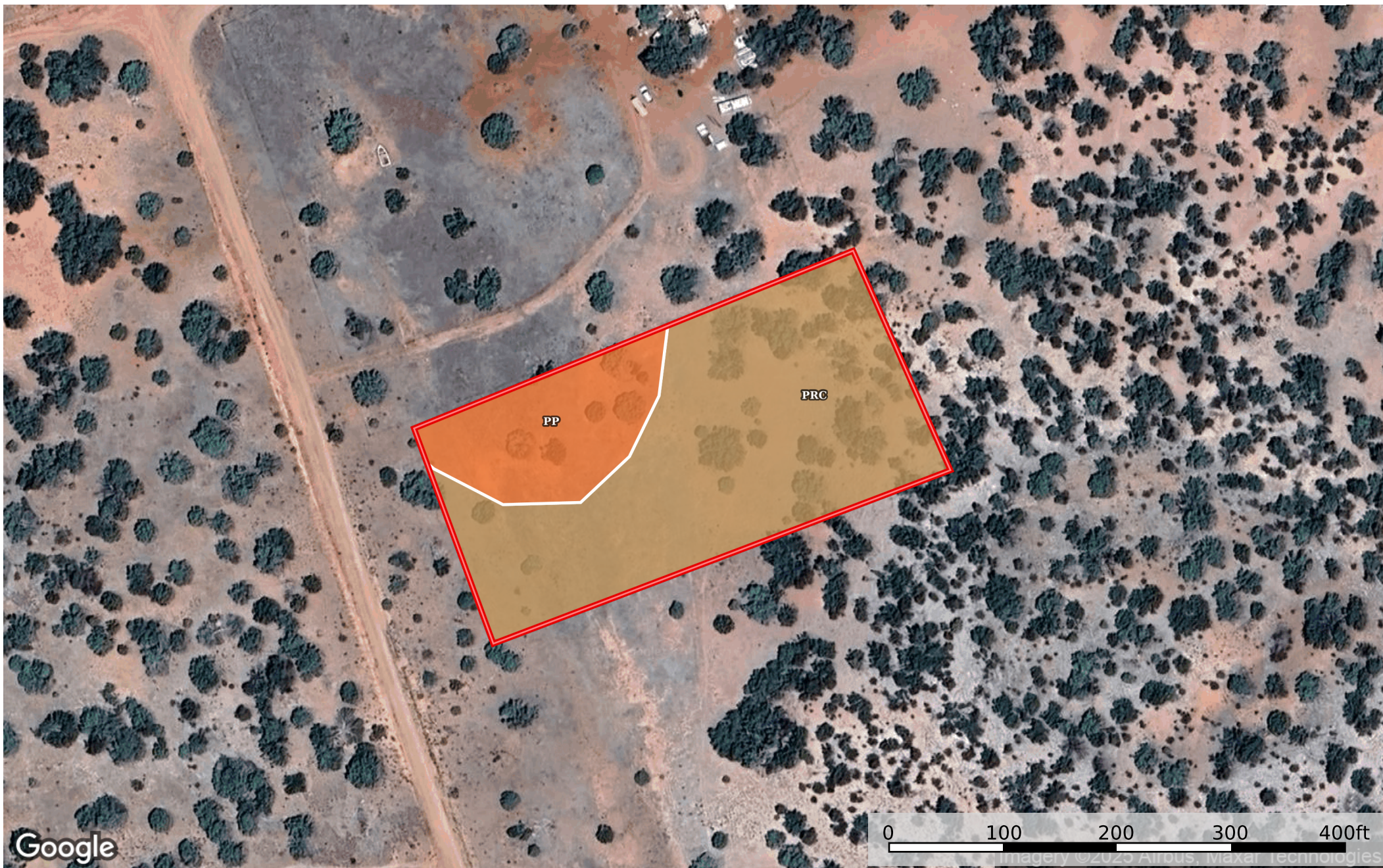


2 Acres Seligman, Yavapai County, AZ 301-41-187
Yavapai County, Arizona, 2 AC +/-



 Boundary

|  Boundary 1.97 ac

SOIL CODE	SOIL DESCRIPTION	ACRES	%	CPI	NCCPI	CAP
PrC	Purner gravelly loam, 2 to 15 percent slopes	1.53	77.27	0	9	6s
Pp	Poley-Partri loams	0.44	22.22	0	21	6s
TOTALS		1.97(*)	100%	-	11.62	6.0









(*) Total acres may differ in the second decimal compared to the sum of each acreage soil. This is due to a round error because we only show the acres of each soil with two decimal.

Capability Legend

Increased Limitations and Hazards

Decreased Adaptability and Freedom of Choice Users

Land, Capability

								
	1	2	3	4	5	6	7	8
'Wild Life'	•	•	•	•	•	•	•	•
Forestry	•	•	•	•	•	•	•	
Limited	•	•	•	•	•	•	•	
Moderate	•	•	•	•	•	•		
Intense	•	•	•	•	•			
Limited	•	•	•	•				
Moderate	•	•	•					
Intense	•	•						
Very Intense	•							

Grazing Cultivation

(c) climatic limitations (e) susceptibility to erosion

(s) soil limitations within the rooting zone (w) excess of water