

**CHEYENNE COUNTY
GRASSLAND**

**Listing Price: \$105,000
\$734 per acre**



**TOWNSHIP 16 SOUTH, RANGE 47 WEST
E2E2 SECTION 10**

LISTING # 24046



call me today!

VIRGIL GEORGE, EMPLOYING BROKER

VG@RXL.LAND

Office: 719-346-5420 | Mobile: 719-349-1966

1510 Rose Avenue | Burlington, CO 80807

Licensed in Colorado & Kansas

**Your Local AuctionTime.com Representative
Call to List your Equipment Today!**



www.rockingxland.com

Where a Handshake Still Means Something!

NOTICE * BROKER HAS GATHERED INFORMATION FROM SOURCES DEEM RELIABLE. ALTHOUGH BROKER MAKES NO WARRANTIES EXPRESSED OR IMPLIED. BROKER SHALL BE REPRESENTING AS A TRANSACTION BROKER. VIEW ADDITIONAL INFORMATION AND PROPERTIES AT WWW.ROCKINGXLAND.COM

Features:

- 143± acres Native grass
- County road access
- Located along CR 28, 1/2 mile south of CR G
- Water supplied by earthen dam
- 2024 Taxes: \$83.28
- Directions: South of Kit Carson on Hwy 287 5 miles to CR G, then East 6.35 miles to CR 28, then South .5 mile to the NE corner of the property.



call me today!

VIRGIL GEORGE, EMPLOYING BROKER

VG@RXL.LAND

Office: 719-346-5420 | Mobile: 719-349-1966

1510 Rose Avenue | Burlington, CO 80807

Licensed in Colorado & Kansas

Your Local AuctionTime.com Representative
Call to List your Equipment Today!

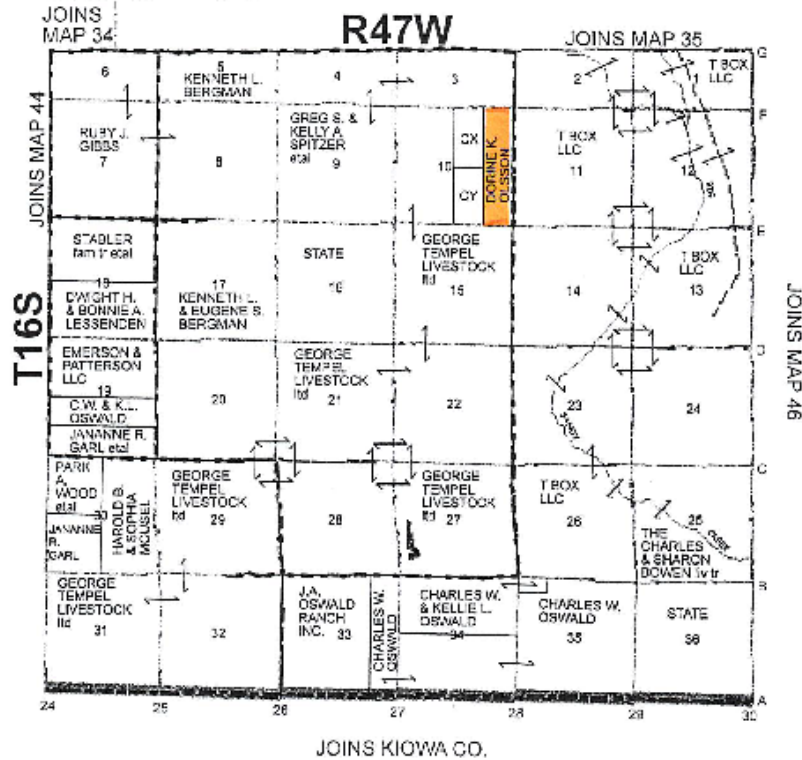


www.rockingxland.com

Where a Handshake Still Means Something!

NOTICE * BROKER HAS GATHERED INFORMATION FROM SOURCES DEEM RELIABLE. ALTHOUGH BROKER MAKES NO WARRANTIES EXPRESSED OR IMPLIED. BROKER SHALL BE REPRESENTING AS A TRANSACTION BROKER. VIEW ADDITIONAL INFORMATION AND PROPERTIES AT WWW.ROCKINGXLAND.COM

MAP 45



call me today!

VIRGIL GEORGE, EMPLOYING BROKER

VG@RXL.LAND

Office: 719-346-5420 | Mobile: 719-349-1966

1510 Rose Avenue | Burlington, CO 80807

Licensed in Colorado & Kansas

Your Local AuctionTime.com Representative
Call to List your Equipment Today!



www.rockingxland.com

Where a Handshake Still Means Something!

NOTICE * BROKER HAS GATHERED INFORMATION FROM SOURCES DEEM RELIABLE. ALTHOUGH BROKER MAKES NO WARRANTIES EXPRESSED OR IMPLIED. BROKER SHALL BE REPRESENTING AS A TRANSACTION BROKER. VIEW ADDITIONAL INFORMATION AND PROPERTIES AT WWW.ROCKINGXLAND.COM



Olsson, Grass
Cheyenne County, Colorado, 143 AC +/-



 Boundary