

## Renaissance Park - Formerly Central State Hospital Campus

7.159 Acres with Former Fueling Station

Thomas Field Rd | Milledgeville Rd

Milledgeville GA



**Lot Size:** 7.159 Acres

**Utilities:** All available

**Notes:**

- Fuel service center on site
- Easy access off Vinson Highway
- Partially fenced
- Clean environmental

**Location:** Property is located in the Mixed-Use Renaissance Park. Located on the corner of Thomas Field Dr SE and Central Shop Rd. Other businesses nearby include Dublin Gas Company, Clear Choice Exteriors, Premier Contracting, Epic Rentals, and Industrial Maintenance.

**Located in the  
Federal Opportunity Zone**

**REDUCED PRICE: \$135,000**  
**~~SALE PRICE: \$150,000~~**

**FOR MORE  
INFORMATION  
CONTACT**

**Trip Wilhoit, CCIM, ALC**  
478-746-9421 (O)  
478-960-4080 (C)  
trip@fickling.com

**Patty Burns, CCIM, ALC**  
478-746-9421 (O)  
478-951-5100 (C)  
patty@fickling.com

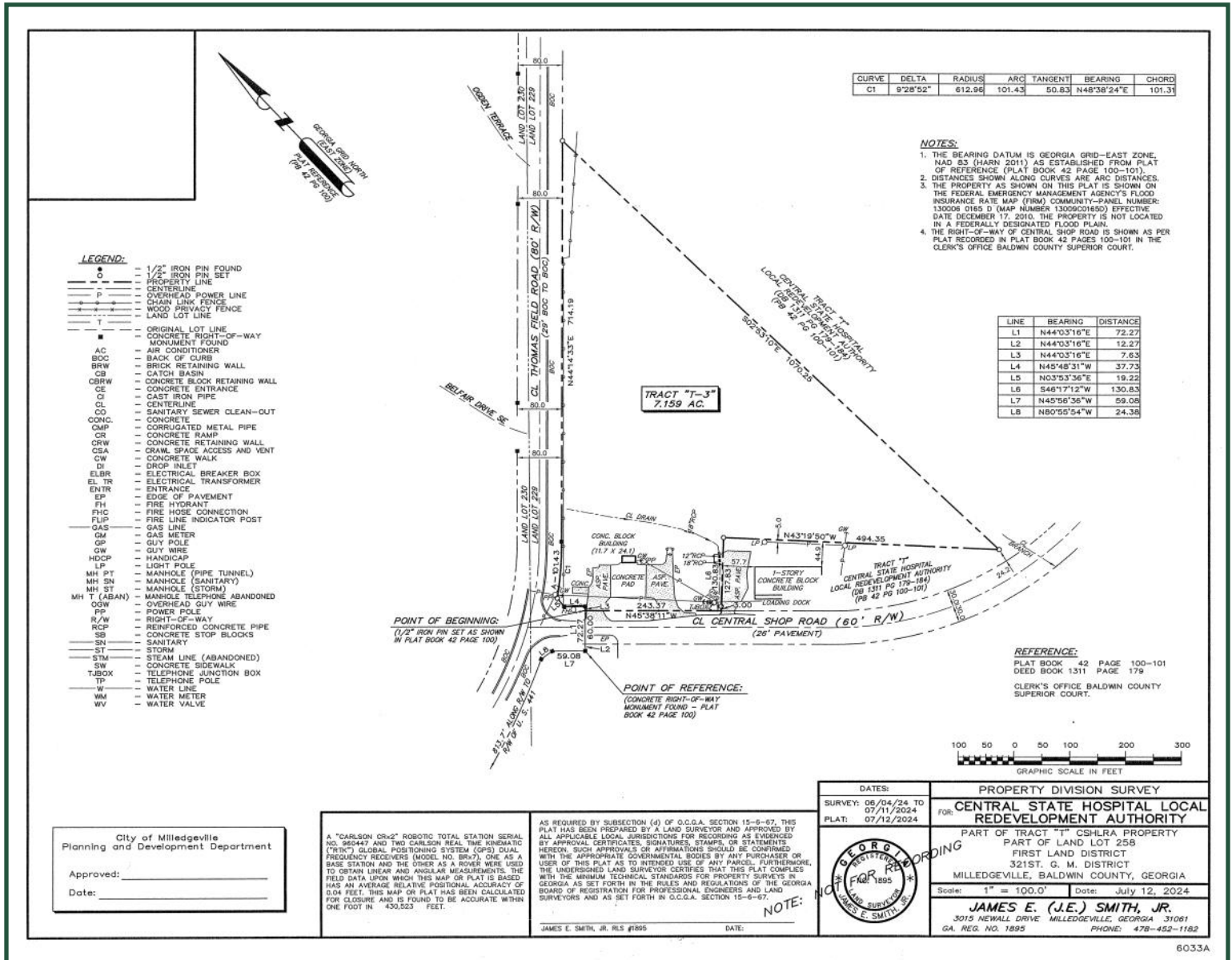
**commercial.fickling.com | georgiacommercialrealestate.net**

577 Mulberry St, Suite 1100 \* P.O. Box 310 \* Macon, GA 31202 | Phone (478) 746-9421 | Fax (478) 742-2015

This information is from resources deemed to be reliable, no warranties or guarantees for accuracy are made by Fickling and Company

**Renaissance Park - Formerly Central State Hospital Campus**  
 7.159 Acres with Former Fueling Station  
 Thomas Field Rd | Milledgeville Rd  
 Milledgeville GA

## SURVEY



**FOR MORE  
 INFORMATION  
 CONTACT**

**Trip Wilhoit, CCIM, ALC**  
 478-746-9421 (O)  
 478-960-4080 (C)  
 trip@fickling.com

**Patty Burns, CCIM, ALC**  
 478-746-9421 (O)  
 478-951-5100 (C)  
 patty@fickling.com

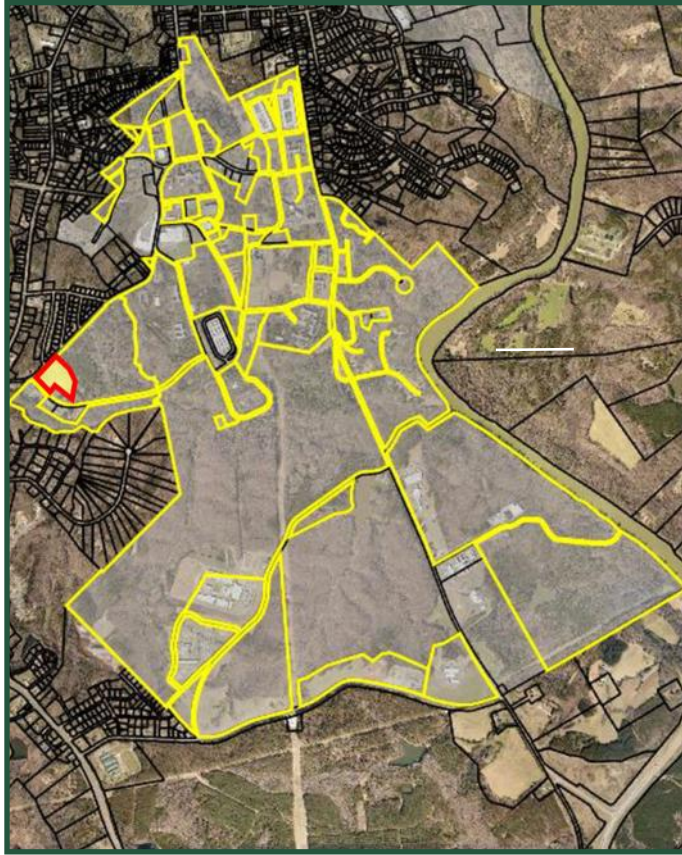
**commercial.fickling.com | georgiacommercialrealestate.net**

577 Mulberry St, Suite 1100 \* P.O. Box 310 \* Macon, GA 31202 | Phone (478) 746-9421 | Fax (478) 742-2015

This information is from resources deemed to be reliable, no warranties or guarantees for accuracy are made by Fickling and Company



**Renaissance Park**  
**Formerly Central State Hospital Campus**  
**Mixed Use Development**  
**2,200 acres | Milledgeville | 31061**



**Renaissance Park Highlights:**

- 2,200 acres consisting of 800 acres of infrastructure and approximately 200 buildings
- Renaissance Park is located in the Opportunity Zone
- Ideal investment for the future growth.
- Convenient to Downtown Milledgeville, Georgia College & State University, Georgia Military College, Atrium Health Navicent Baldwin Hospital, The Industrial Park, and the North Columbia Retail Corridor.
- Located minutes from the 441 Bypass and the Fall Line Freeway.



**Park Size:**  $\pm$ 2,200 AC consisting of 200 $\pm$  Buildings

**Utilities:** All Available - (electric, water, gas, and internet) throughout the 2,200 acre development

**Businesses:** The Park is the home to the former Bobby Parham Kitchen (123,000 SF) that processed vegetables and fruits for hospitals, schools, food service partners, and retail clients (GA Grown). Future home of the GMC South Campus which will include student and staff housing, new ballfields, tennis courts, and the new GMC Activities Center.

Additional businesses include Bostick Center (280 bed), Pineland – Cogentes, Alterra Networking, GA War Veterans Home (375 bed and PTSD building), Responsive Technology Partners, GA Dept. of Behavioral Health & Development Disabilities, Youth Challenge Academy, Spires Electrical, Antebellum Garage Doors, ATD Auto Services, Clear Choice Exteriors, CSH Museum, Macon Boots, and the Chapel of All Faiths Event Center.

**Call Agent for More Information**

**FOR MORE  
INFORMATION  
CONTACT**

**Trip Wilhoit, CCIM, ALC**  
478-746-9421 (O)  
478-960-4080 (C)  
trip@fickling.com

**Patty Burns, CCIM, ALC**  
478-746-9421 (O)  
478-951-5100 (C)  
patty@fickling.com

**commercial.fickling.com | georgiacommercialrealestate.net**

577 Mulberry St, Suite 1100 \* P.O. Box 310 \* Macon, GA 31202 | Phone (478) 746-9421 | Fax (478) 742-2015

This information is from resources deemed to be reliable, no warranties or guarantees for accuracy are made by Fickling and Company