



Prescott Road 45 Acre Grove

0 Prescott Road, Zolfo Springs, Florida 33890

Nick Dabbelt
937-903-1489
nick@saundersrealestate.com

Dean Saunders, ALC, CCIM
863-287-8340
dean@saundersrealestate.com

PROPERTY OVERVIEW



Sale Price

\$675,000

Offering Summary

Acreage:	45 Acres
Price / Acre:	\$15,000
State:	Florida
City:	Zolfo Springs
County:	Hardee
Property Type:	Citrus & Land

Property Overview

Exceptional opportunity to own 45 acres in the heart of Florida's agricultural region. This grove in Zolfo Springs features a deep agricultural well, providing a reliable water source for irrigation and continued agricultural use. The property offers well-maintained rows, excellent drainage, and convenient access via a hard road. Ideal for citrus production, diversified farming, or potential redevelopment. Surrounded by other active groves and farms, this is a turn-key tract for ag operators or investors seeking long-term value.



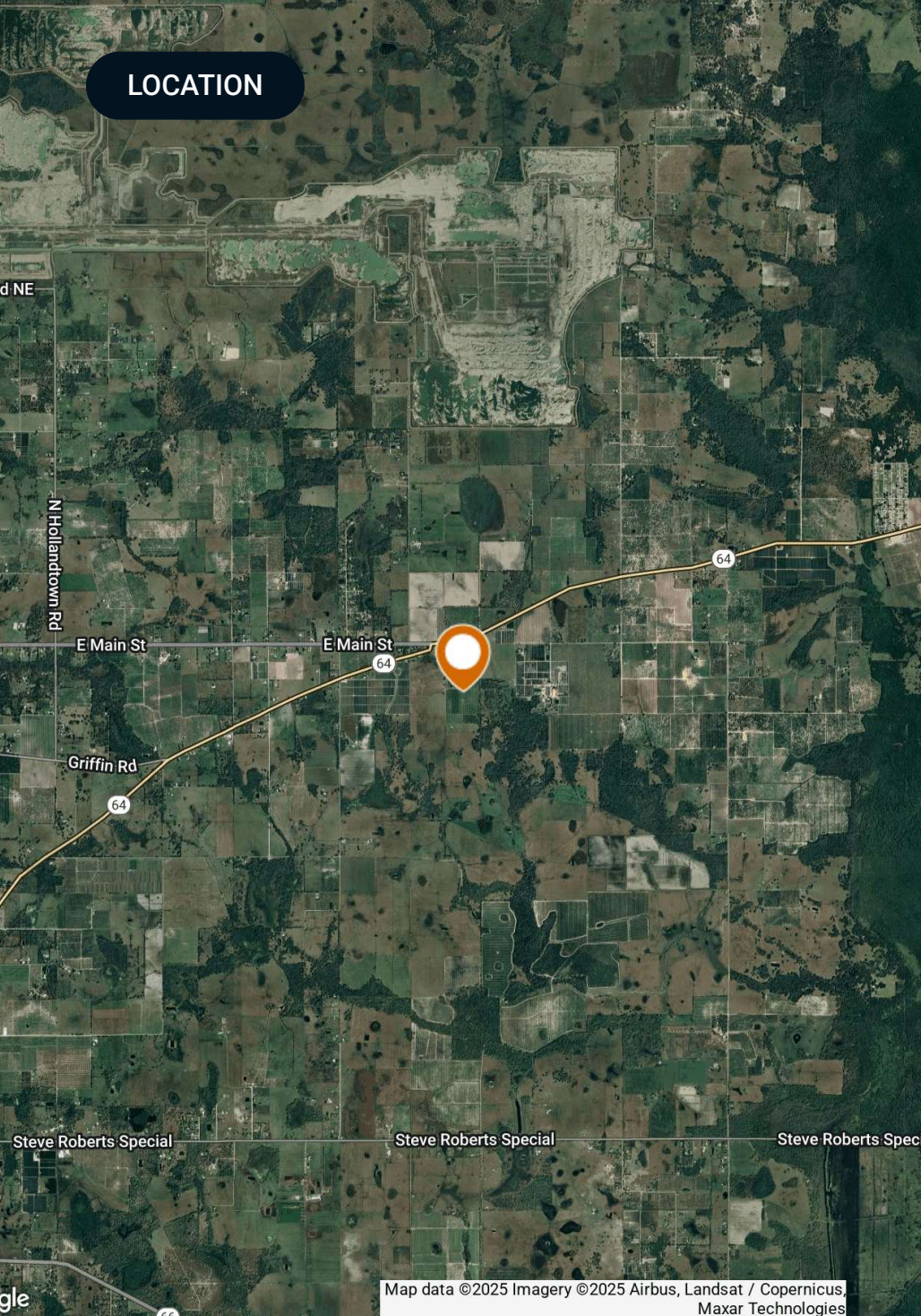
SPECIFICATIONS & FEATURES



Specifications & Features

Land Types:	Citrus
Uplands / Wetlands:	40 acre of Uplands / 5 acres of Wetlands
Soil Types:	Pomona Fine Sand Smyrna Sand
Taxes & Tax Year:	\$853 - 2024
Zoning / FLU:	Agriculture
Nearest Point of Interest:	Zolfo Springs
Current Use:	Citrus Grove

LOCATION



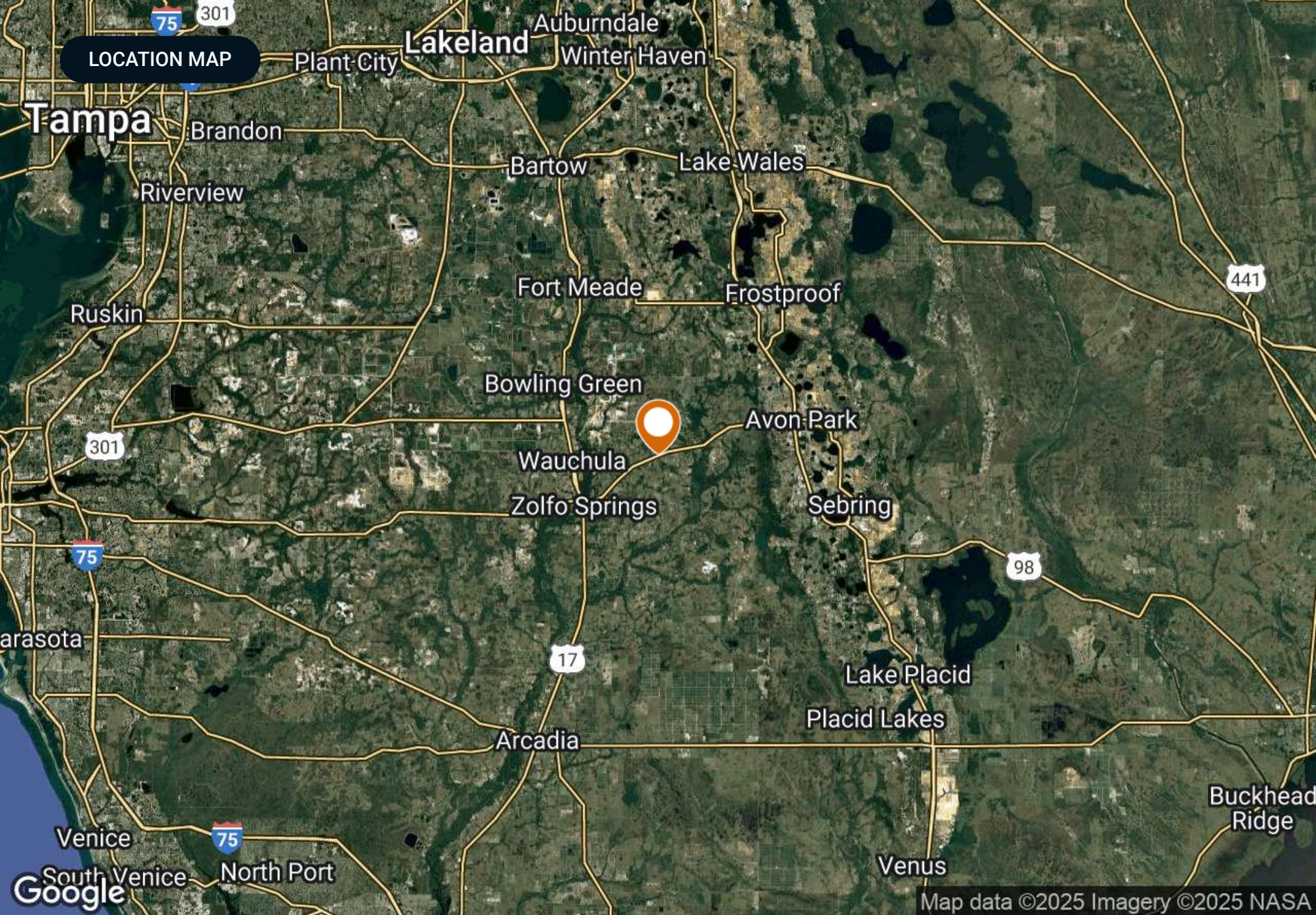
Location & Driving Directions

Parcel: 0334260000093300000 &
1034260000075400000

GPS: 27.5500036, -81.6968079

Driving
Directions: Contact Listing Agents

Showing
Instructions: Contact Listing Agents



ADDITIONAL PHOTOS

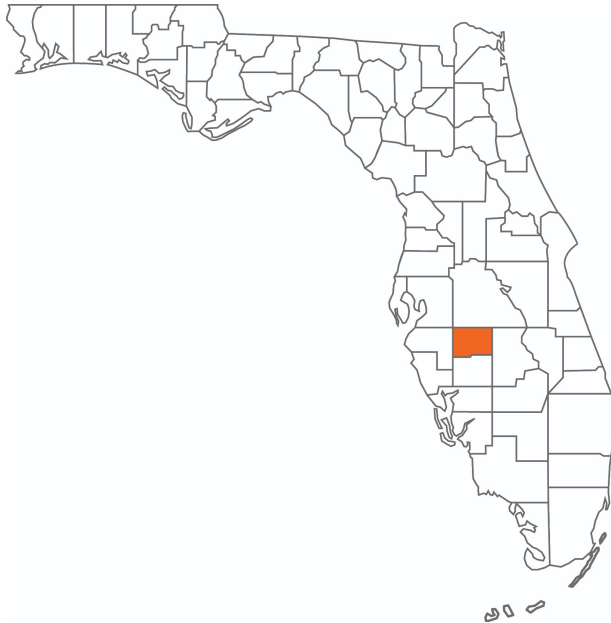






Hardee County

FLORIDA



Founded	1921	Density	42.2 (2019)
County Seat	Wauchulla	Population	25,129 (2023)
Area	637 sq mi	Website	hardeecounty.net

Hardee County is located in West Central Florida and has a population of 25,645. Flowing through the county, the serene Peace River offers "Old Florida" recreation like fossil hunting, kayaking, and canoeing. Additionally, Hardee County is situated amid large phosphate deposits in an area known as "Bone Valley." With phosphate mining as a significant industry, The Mosaic Company has become a leading employer that currently owns all the mining land in Hardee County. The Mosaic Company is a Fortune 500 company with headquarters in Tampa, Florida

According to DataUSA, the county's 2020 economy employs 9,710 people, with a high number of employees in the occupations of Forestry, Fishing & Hunting (1,002 people). The highest-paying industries by median earnings are Transportation & Warehousing & Utilities (\$47,772), Finance & Insurance, & Real Estate (\$44,241), and Public Administration (\$39,267).



SAUNDERS
REAL ESTATE



SAUNDERS
LAND



SAUNDERS
COMMERCIAL

Serving the Southeast

At Saunders Real Estate, we deliver full-service real estate solutions across the Southeast, built on more than 30 years of trusted experience. Our dedicated teams—experts in both land and commercial real estate—offer tailored guidance backed by deep regional insight and a proven track record. We believe that successful outcomes start with strong relationships built on trust and a shared commitment to your goals.



877-518-5263 • info@saundersrealestate.com