



Custom Luxury Masterpiece
937 Old Welcome Road, Lithia

Fischbach
LAND COMPANY

Lifestyle & Luxury



Perfectly Placed Modern Farmhouse Surrounded by Nature

Tucked away at the end of a quiet country road and bordered by thousands of acres of conservation land, this brand-new modern farmhouse offers the perfect blend of luxury, comfort, and tranquility.

THE HOME

Proudly built by AR Homes, this showstopping residence showcases exceptional craftsmanship and upscale finishes throughout. Soaring ceilings, exposed beams, a 78” electric fireplace, and a decorative stone accent wall set the tone for warm sophistication in the heart of the home.

The gourmet kitchen is a dream, featuring Monogram appliances, a six-burner gas range, double ovens, a microwave drawer, wine cooler, rich hardwood cabinetry, and a generous island perfect for entertaining or everyday living. Designed for both style and function, the split floor plan includes a spacious mudroom with a built-in family command center, durable engineered hardwood floors, and a large bonus room for extra flexibility.

Retreat to the serene owner’s suite, where a spa-like bath awaits with a freestanding tub, oversized walk-in shower, dual vanities, and a custom-designed closet complete with an 8-drawer center island.

THE LAND

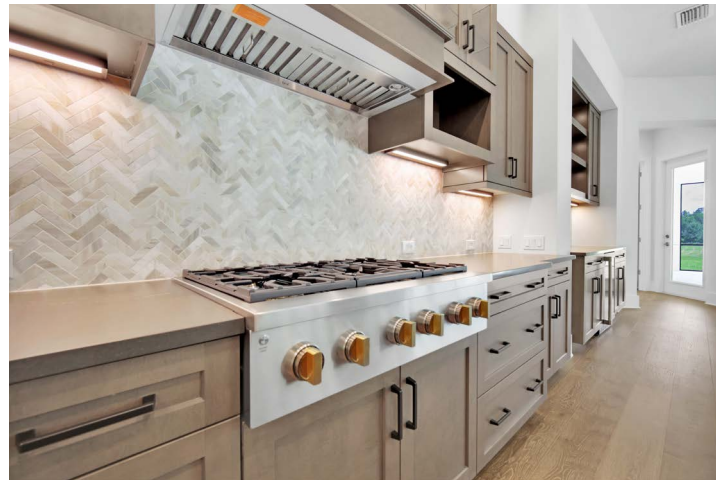
Step outside and immerse yourself in nature — with direct access to over 11.5 miles of equestrian and hiking trails in the Alafia River Corridor Nature Preserve. The 5± high-and-dry acres offer room to roam, whether you’re envisioning horses or livestock, building additional structures, starting a garden, or simply enjoying the privacy.

Located in a hidden pocket of Lithia known for custom homes and large-acreage estates, you’ll enjoy the peace of country living without sacrificing convenience. Top-rated schools, shopping, and dining are just a short drive away.

Acreage: 5± Acres
Pricing: \$1,925,000
Improvements: 4,358 SF 4BR/4.5BA Home

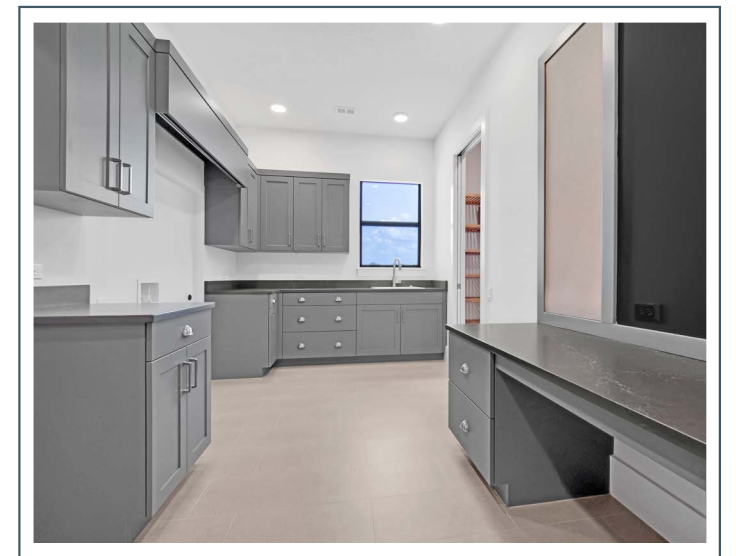
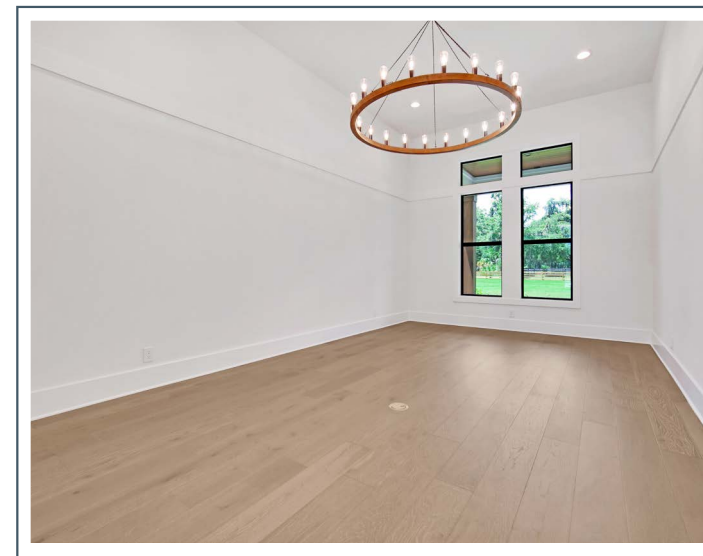
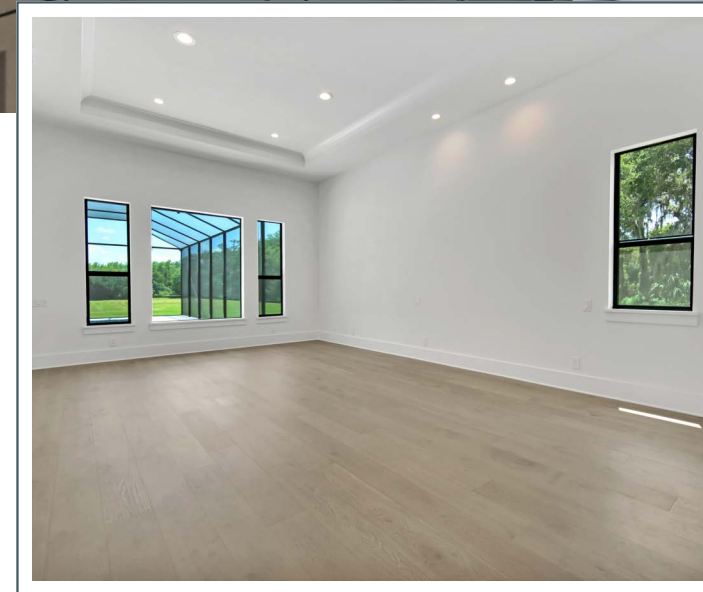


[Click for Website](#)



THE HEART OF THE HOME

Rich Hardwood Cabinetry
Monogram Appliances
78' Electric Fireplace

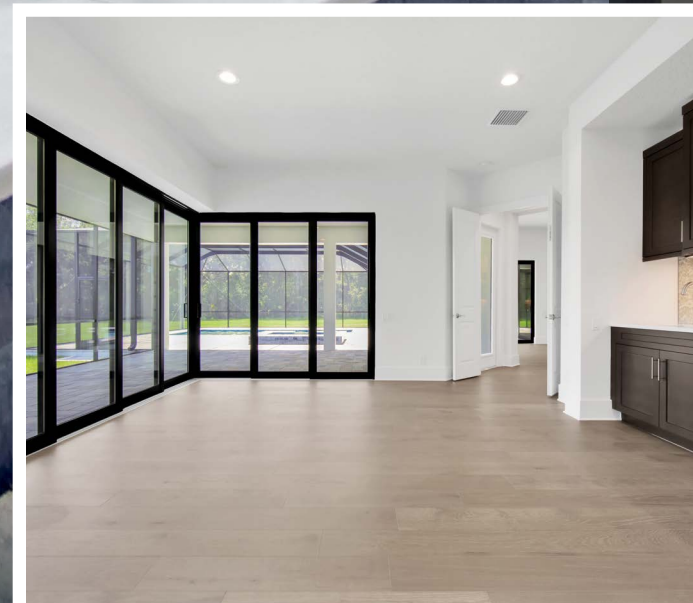
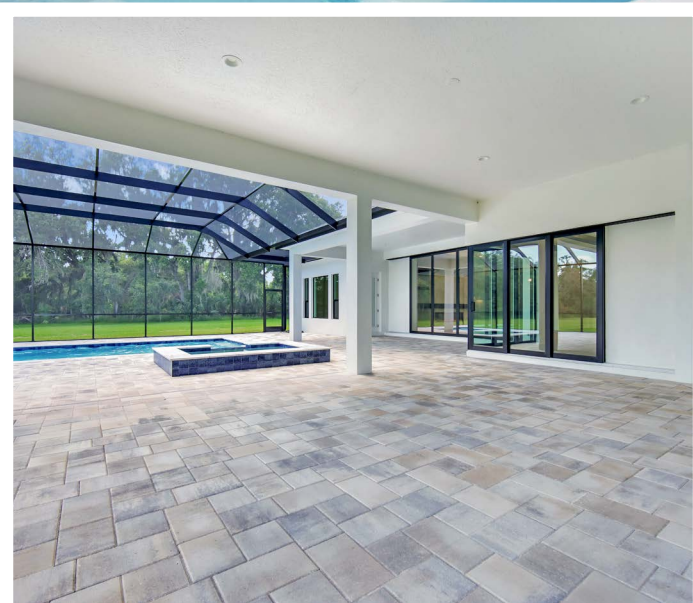


DESIGNED FOR EVERYDAY LIVING

Elegant Primary Suite
Grand Dining Room
Functional Family Command Center



Three sets of sliding glass doors — including two corner sliders — open wide to a sprawling lanai with a fully equipped outdoor kitchen and a spectacular pool area. Whether hosting a crowd or enjoying a quiet evening, this space is designed for seamless indoor-outdoor living, featuring a sparkling pool with spa, sun shelf, and built-in seating.



Fischbach LAND COMPANY

Lifestyle & Luxury



REPRESENTED EXCLUSIVELY BY:



Reed Fischbach
Broker

reed@fischbachlandcompany.com



Melissa Hinton
Agent

melissa@fischbachlandcompany.com

917 S PARSONS AVENUE | BRANDON, FL 33511 | 813-540-1000