

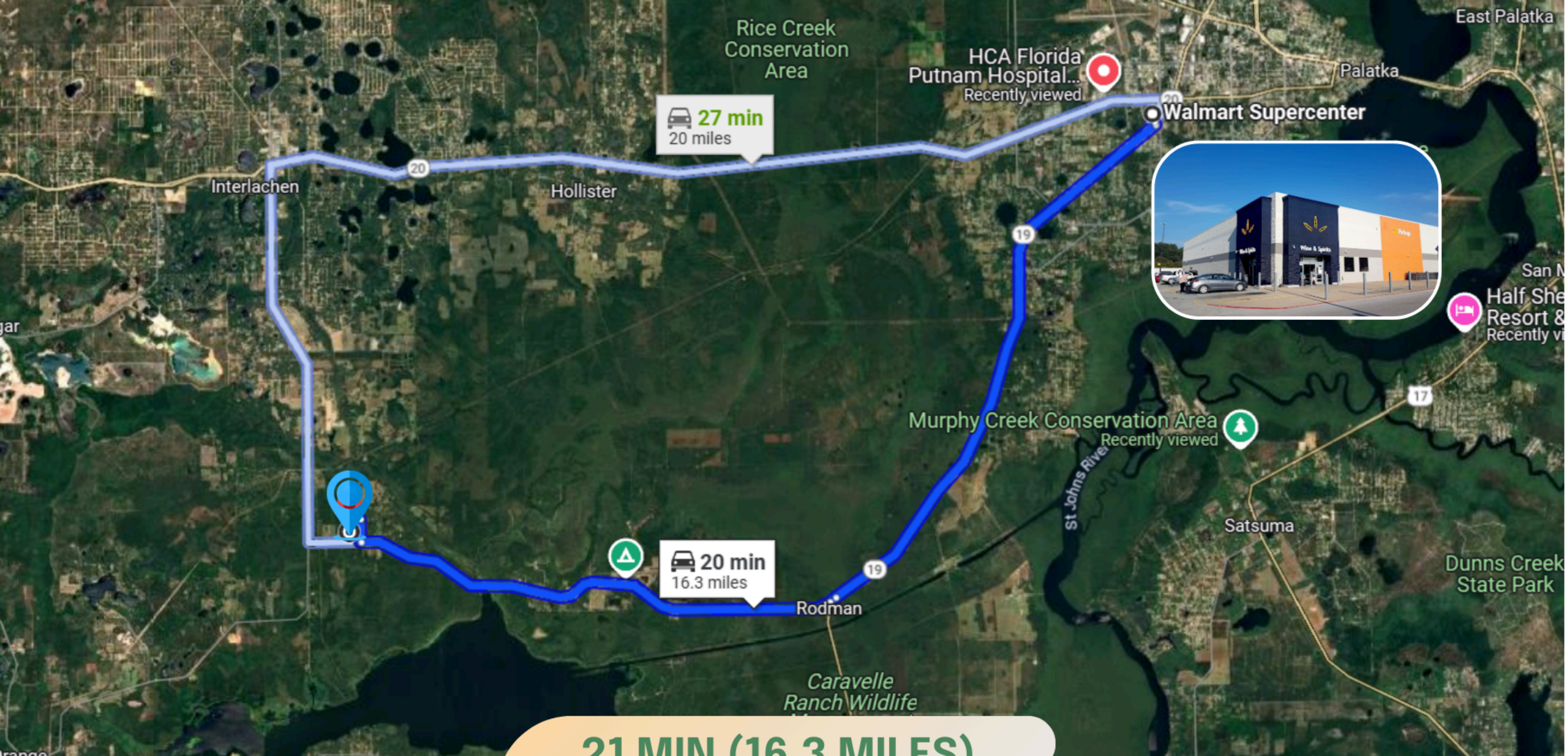
An aerial photograph showing a vast expanse of green forest. On the left side, there is a small, cleared area with several buildings, including a large white one and some smaller structures, surrounded by a few trees. The rest of the image is dominated by a dense, continuous forest stretching towards the horizon under a blue sky with scattered white clouds.

3 acres in Florida!

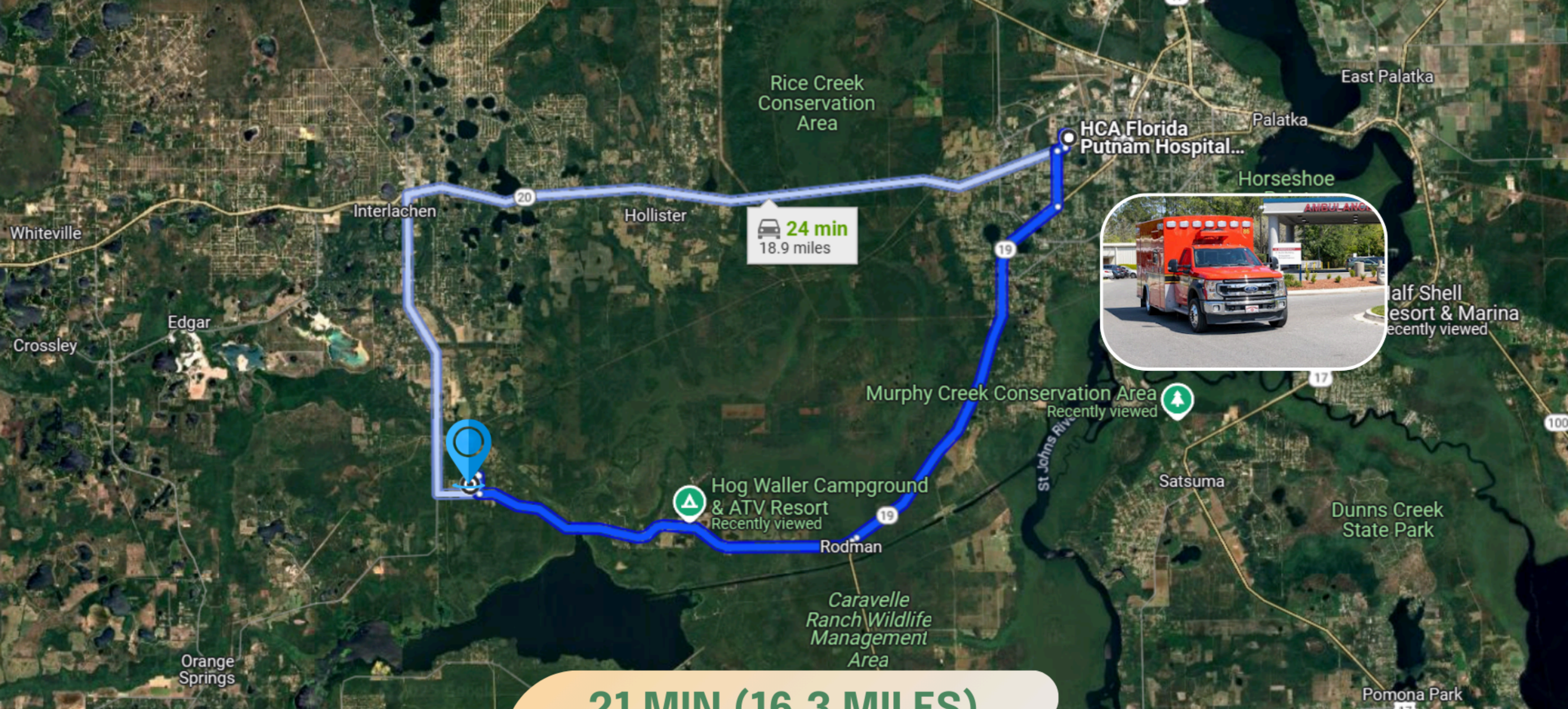
PROPERTY DETAILS

29.553913, -81.868355

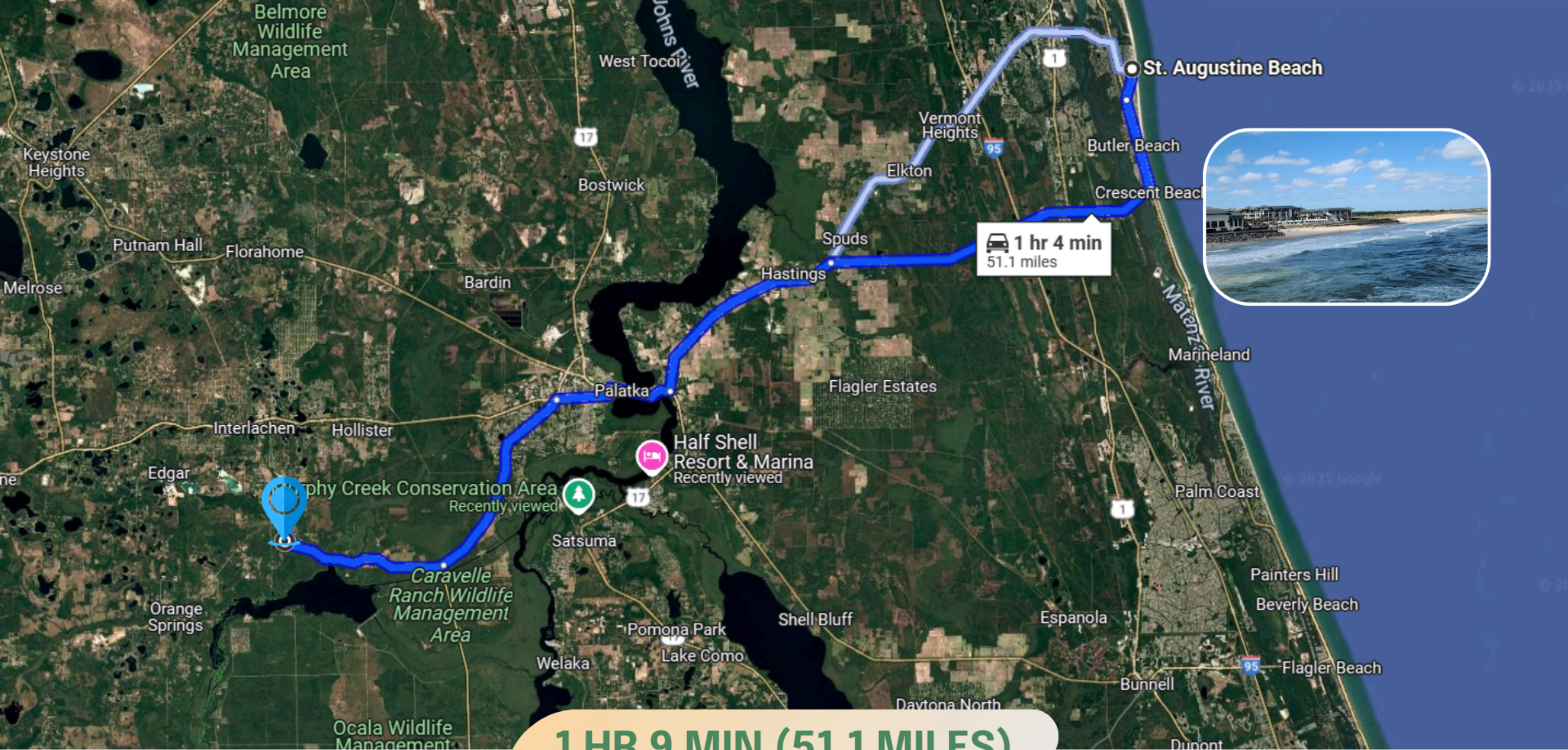
- **APN: 11-11-24-4089-0010-0070/0080/0010**
- **Size, Acres: 3**
- **GPS Coordinates: 29.553913, -81.868355**
- **County, State: Putnam County, Florida**
- **Zoning: A2 - Agricultural II**
- **HOA Fees: No HOA**



THIS PROPERTY IS 21 MIN (16.3 MILES) TO WALMART SUPERCENTER IN PALATKA, FL.



**THIS PROPERTY IS 21 MIN (16.3 MILES) TO HCA FLORIDA PUTNAM HOSPITAL
EMERGENCY ROOM IN PALATKA, FL.**



1 HR 9 MIN (51.1 MILES)

THIS PROPERTY IS 1 HR 9 MIN (51.1 MILES) TO ST AUGUSTINE BEACH ON ANASTASIA ISLAND.

CLIMATE



Summer High:

The July high is around 91 degrees



Winter Low:

The January low is 45



Rain:

Averages 51 inches of rain a year



Snow:

Averages 0 inches of snow a year

NEARBY AIRPORTS



Daytona Beach International Airport



Jacksonville International Airport

A photograph of two men shaking hands in a field at sunset. The man on the left is wearing a light-colored vest over a blue shirt and has a backpack. The man on the right is wearing a plaid shirt over a white t-shirt, glasses, and holding a tablet. The background is a field of yellow flowers under a warm, orange sky.

We pride ourselves in making sure the process is
simple, quick and **stress-free** for you!

We offer **easy financing** as well as a
discounted cash price!





LIFETIME LAND USA

VISIT US FOR MORE PROPERTY LISTINGS

Q <https://lifetimelandusa.com>



YOU MAY ALSO REACH US AT:



682-382-9719



sales@lifetimelandusa.com



Lifetime Land USA



[lifetimeland_usa](https://www.instagram.com/lifetimeland_usa)

*Our mission is to
turn your dream
of becoming a
landowner into
a reality.*