

LAND FOR SALE

Edgar County, Illinois

75[±]AC.

**High-Quality
Recreational
Property**

- Prime deer & turkey hunting potential
- Just East of Chrisman, IL
- 55 miles Southeast of Champaign, IL
- 80 miles West of Indianapolis, IN
- Numerous recreational possibilities

Located in Section 31 of Prairie Township (T.16N R.11W), Edgar County, Illinois

ASKING PRICE: \$450,000 - \$6,000/ACRE



Murray Wise
ASSOCIATES LLC

(217) 398-6400

www.MurrayWiseAssociates.com



BILL HUGHES

BROKER, VICE PRESIDENT
Bill@mwallc.com



ROSS PERKINS

BROKER, VICE PRESIDENT
Ross.Perkins@mwallc.com



ERIC SARFF

IL MANAGING BROKER
Eric@mwallc.com



Murray Wise ASSOCIATES LLC

1605 S. State Street, Suite 110
Champaign, IL 61820
(217) 398-6400
www.MurrayWiseAssociates.com

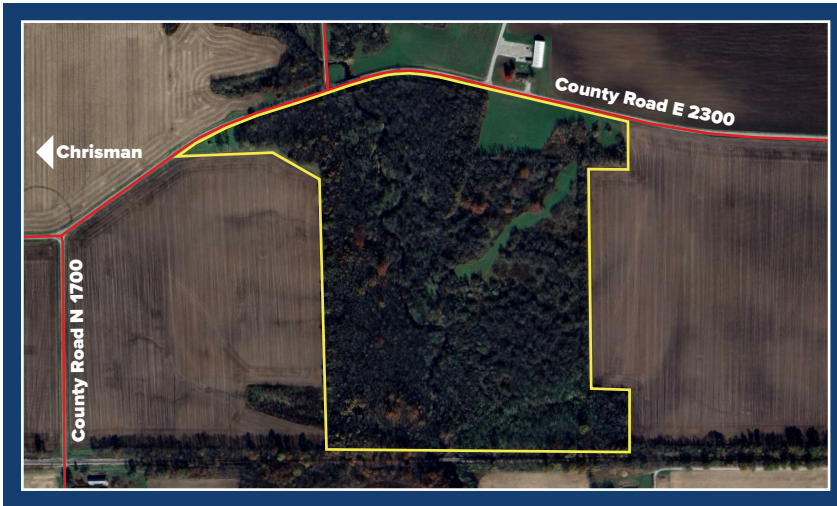


75±AC.

PROPERTY DESCRIPTION

This unique property offers many recreational activities and abundant hunting opportunities. The acreage provides ample wooded acres for secluded hunting spots, as well as access to the Crabapple Creek, which meanders throughout the parcel. The pasture acreage on the east side of the farm would make an ideal spot for a hunting lodge or country home.

Note - The Seller is in the process of obtaining a boundary survey and it will be made available once completed.



BILL HUGHES
#471.014542
Bill@mwallc.com

ROSS PERKINS
#471.021587
Ross.Perkins@mwallc.com

ERIC SARFF
#471.020806
Eric@mwallc.com

AGENCY: Murray Wise Associates LLC and its representatives are exclusive agents of the Seller.

SELLER: Barbara J. Voegel Revocable Trust; Kathryn Elizabeth Boetcher Trust, UTA; Suzanne V. Peterson Trust

DISCLAIMER AND ABSENCE OF WARRANTIES: All information contained in this brochure and all related materials are subject to the terms and conditions outlined in the agreement to purchase. The property is being sold on an "AS IS, WHERE IS" basis, and no warranty or representation, either express or implied, concerning the property is made by the Seller or Murray Wise Associates LLC. The information contained in this brochure is believed to be accurate but is subject to verification by all parties relying on it. No liability for its accuracy, errors or omissions is assumed by the Seller or Murray Wise Associates LLC. All sketches and dimensions in this brochure are approximate. All acreages are approximate and have been estimated based on legal descriptions or aerial photographs.