

SPACIOUS SUNFLOWER COUNTY HOME



5 Lombardy Road, Drew, MS 38737

\$389,000

- 2,910 SQUARE FEET
- 3 BEDROOMS/2.5 BATHS
- OPEN FLOOR PLAN WITH A LARGE LIVING AREA
- PRIMARY BATH WITH JACUZZI TUB & WALK-IN SHOWER
- MODERN KITCHEN WITH GAS RANGE & ISLAND
- DEN WITH LARGE WINDOWS & POND VIEW
- SWIMMING POOL, PATIO, & SPRINKLER SYSTEM



BRUCE WEST

ALC®, ASSOCIATE BROKER
ACCREDITED LAND CONSULTANT

O: 662.441.2500 | C: 662.873.3007

Bruce@TomSmithLand.com



Expect More. Get More.



ANTHONY STEEN

REALTOR®

O: 601.898.2772 | C: 662.645.5151

Anthony@TomSmithLand.com

TomSmithLandandHomes.com

Information is believed to be accurate but not guaranteed.





Welcome to your new spacious home situated on 7± acres in Sunflower County, MS. The open floor plan home features 2,910 sq ft, three bedrooms, and two and a half baths, and the living area is generously proportioned to accommodate your family's needs. The primary bathroom features a jacuzzi tub and a convenient walk-in shower. The modern kitchen has a large gas range and an island, providing ample counter space and storage. The den, adorned with top-to-bottom windows along the front wall, floods the room with natural light and offers a captivating view of the front yard pond. Step outside to discover a swimming pool complemented by a beautiful patio and well-maintained lawn, courtesy of the automatic sprinkler system. This beautiful home invites you to explore its potential and embrace the serenity of country living. Give Bruce or Anthony a call to schedule your private showing today!



BRUCE WEST

ALC®, ASSOCIATE BROKER
ACCREDITED LAND CONSULTANT

O: 662.441.2500 | C: 662.873.3007

Bruce@TomSmithLand.com

ANTHONY STEEN
REALTOR®

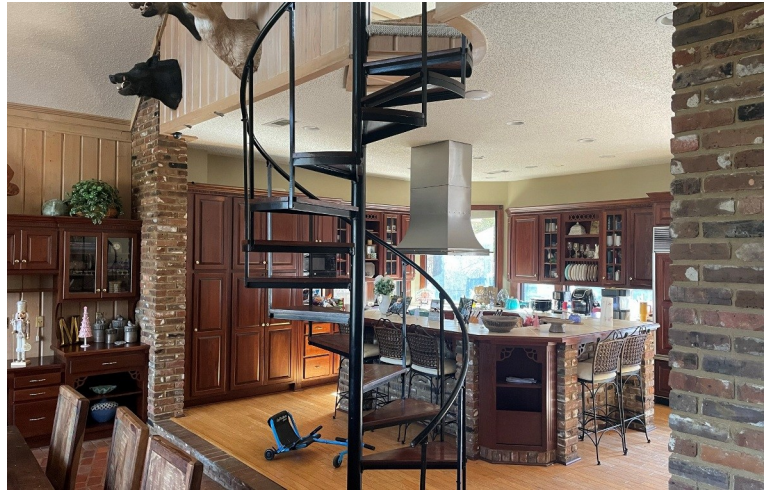
O: 601.898.2772 | C: 662.645.5151

Anthony@TomSmithLand.com

TomSmithLandandHomes.com

Information is believed to be accurate but not guaranteed.





BRUCE WEST

ALC[®], ASSOCIATE BROKER
ACCREDITED LAND CONSULTANT

O: 662.441.2500 | C: 662.873.3007

Bruce@TomSmithLand.com



ANTHONY STEEN

REALTOR[®]

O: 601.898.2772 | C: 662.645.5151

Anthony@TomSmithLand.com

TomSmithLandandHomes.com

Information is believed to be accurate but not guaranteed.





BRUCE WEST
 ALC®, ASSOCIATE BROKER
 ACCREDITED LAND CONSULTANT
 O: 662.441.2500 | C: 662.873.3007
 Bruce@TomSmithLand.com



ANTHONY STEEN
 REALTOR®
 O: 601.898.2772 | C: 662.645.5151
 Anthony@TomSmithLand.com

TomSmithLandandHomes.com

Information is believed to be accurate but not guaranteed.





BRUCE WEST

ALC®, ASSOCIATE BROKER
ACCREDITED LAND CONSULTANT

O: 662.441.2500 | C: 662.873.3007

Bruce@TomSmithLand.com



ANTHONY STEEN

REALTOR®

O: 601.898.2772 | C: 662.645.5151

Anthony@TomSmithLand.com

TomSmithLandandHomes.com

Information is believed to be accurate but not guaranteed.



Aerial Map



[CLICK HERE FOR THE INTERACTIVE MAP](#)

BRUCE WEST

ALC®, ASSOCIATE BROKER
ACCREDITED LAND CONSULTANT

O: 662.441.2500 | C: 662.873.3007

Bruce@TomSmithLand.com



Expect More. Get More.

ANTHONY STEEN
REALTOR®

O: 601.898.2772 | C: 662.645.5151

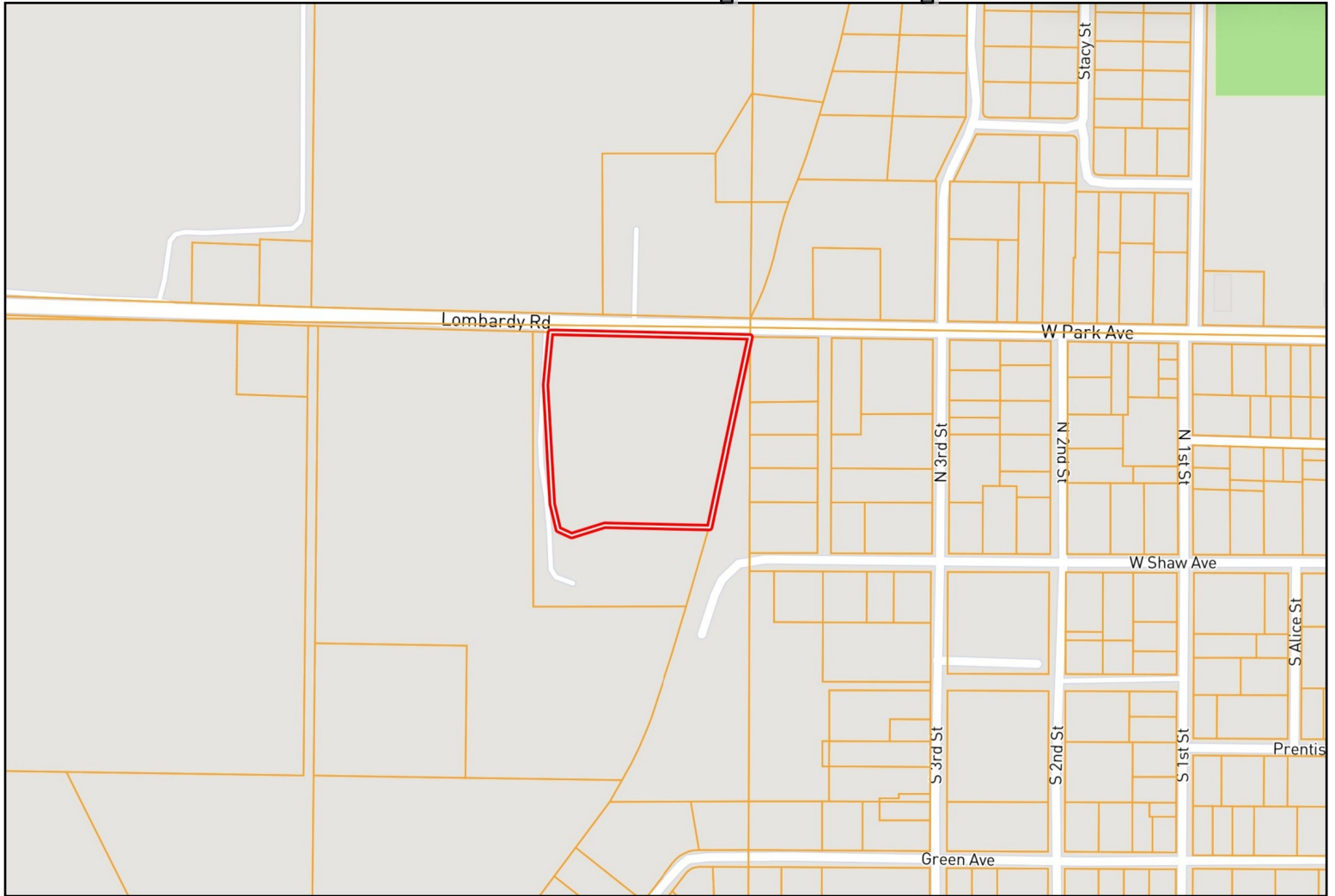
Anthony@TomSmithLand.com

TomSmithLandandHomes.com

Information is believed to be accurate but not guaranteed.



Ownership Map



BRUCE WEST

ALC®, ASSOCIATE BROKER
ACCREDITED LAND CONSULTANT

O: 662.441.2500 | C: 662.873.3007

Bruce@TomSmithLand.com



ANTHONY STEEN
REALTOR®

O: 601.898.2772 | C: 662.645.5151

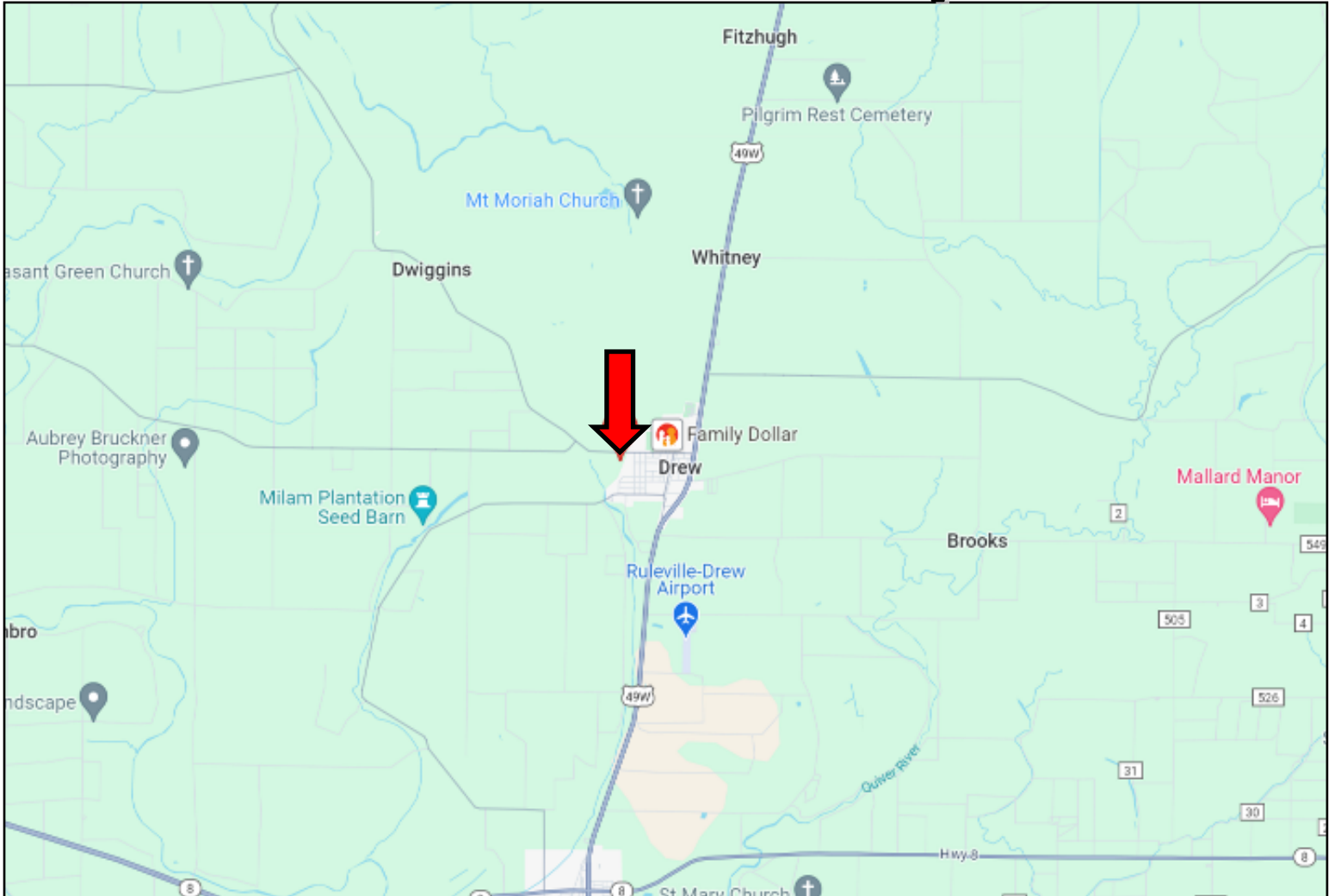
Anthony@TomSmithLand.com

TomSmithLandandHomes.com

Information is believed to be accurate but not guaranteed.



Directional Map



Directions From Hwy 8 and Hwy 49 W in Ruleville, MS: Travel Hwy 49W North towards Drew, MS for 5.8 miles. Turn left onto E Park Ave. Travel 0.8 miles, then continue onto Lombardy Road. After 0.2 miles, the home will be on your left. [GOOGLE MAP LINK](#)
5 Lombardy Road, Drew, MS 38737



BRUCE WEST

ALC®, ASSOCIATE BROKER
ACCREDITED LAND CONSULTANT

O: 662.441.2500 | C: 662.873.3007

Bruce@TomSmithLand.com



Expect More. Get More.



ANTHONY STEEN

REALTOR®

O: 601.898.2772 | C: 662.645.5151

Anthony@TomSmithLand.com

TomSmithLandandHomes.com

Information is believed to be accurate but not guaranteed.

