



CHOCTAW CREEK | 147.16± ACRES
JACKSON PARISH, LA
\$323,752



SMALLTOWN

HUNTING PROPERTIES
& REAL ESTATESM

OFFICE (318) 974-8185

THE CHOCTAW CREEK 147.16

PROPERTY PROFILE

LOCATION:

- Highway 155
- Quitman, Louisiana 71268
- Jackson Parish
- 5± Miles W of Quitman
- 16± Miles S of Ruston

COORDINATES:

- 32.35453, -92.75248

PROPERTY USE:

- Recreational
- Hunting
- Timberland

PROPERTY INFORMATION:

- 147.16± Surveyed Acres
- Frontage on Hwy 155
- Dammed-Up Beaver Pond
- Mature Hardwood Timber
- Recently Thinned Gum & Cypress
- Choctaw Creek Traverses North to South
- Deer & Small Game
- Subject to Flooding

TAX INFORMATION:

- Parcel Number: 0010091521BP



SMALLTOWN
HUNTING PROPERTIES
& REAL ESTATESM

HEATH EUBANKS

SPONSORING BROKER

C: 318-608-7848

O: 318-974-8185

heath@smalltownproperties.com

4848 Main St. - Flora, MS 39071

smalltownproperties.com

Information is believed to be accurate but not guaranteed.

WELCOME TO THE CHOCTAW CREEK 147.16

INTRODUCING THE CHOCTAW CREEK 147.16, SITUATED JUST WEST OF QUITMAN, LOUISIANA. At first glance, you will notice the Jackson Parish tract is loaded with mature bottomland hardwoods, even after a recent timber thinning. And, in this part of the country, this is a rare find! Choctaw Creek winds through the property from the north to the southernmost boundary lines, offering a diverse habitat. Near the center of the tract you'll find a dammed-up beaver pond providing even more opportunity for wildlife. There is a good chance you will get in a good wood duck shoot at some point. During the initial evaluation of this place, multiple deer were spotted in and among the beaver pond, utilizing islands of dry ground across the pond for cover. The Choctaw Creek 147.16 is going to offer some of the best hunting opportunities in the area. Choctaw Creek was previously part of the very well-known Jackson-Bienville Wildlife Management Area. On the north and south ends of the property, you'll find a recent timber thinning of gum and cypress timber. The timber management will offer an outstanding habitat for years to come. The land on the south side of the highway is clear-cut.

If you're looking for a tract that is going to offer some great whitetail hunting, you might ought to give this one a look. With tons of cover and diversity, this is where the big deer like to spend their time.

Call Heath Eubanks today to schedule a private showing of the Choctaw Creek 147.16.



SMALLTOWN
HUNTING PROPERTIES
& REAL ESTATESM

HEATH EUBANKS

SPONSORING BROKER

C: 318-608-7848

O: 318-974-8185

heath@smalltownproperties.com

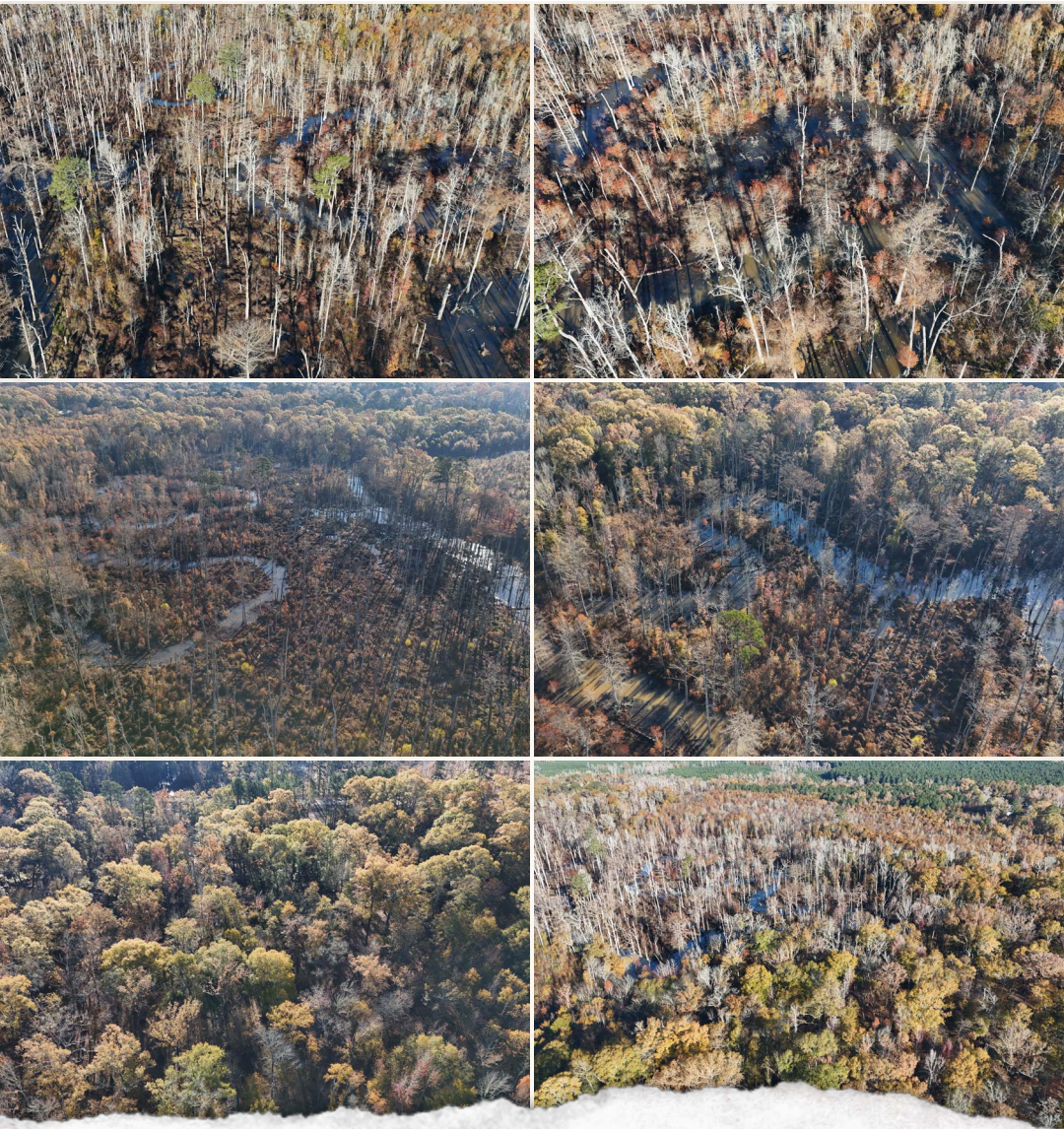
4848 Main St. - Flora, MS 39071

smalltownproperties.com

Information is believed to be accurate but not guaranteed.

CHOCTAW CREEK | 147.16 ± ACRES

JACKSON PARISH, LOUISIANA



SMALLTOWN
HUNTING PROPERTIES
& REAL ESTATESM

HEATH EUBANKS

SPONSORING BROKER

C: 318-608-7848

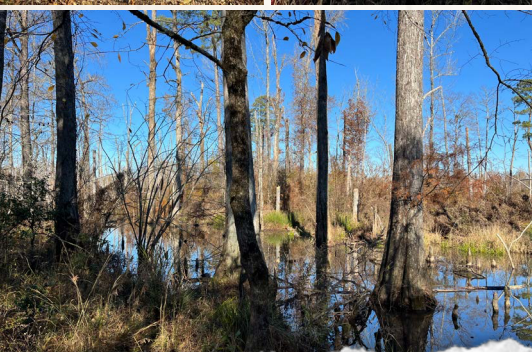
O: 318-974-8185

heath@smalltownproperties.com

4848 Main St. - Flora, MS 39071

smalltownproperties.com

Information is believed to be accurate but not guaranteed.



SMALLTOWN
HUNTING PROPERTIES
& REAL ESTATESM

HEATH EUBANKS

SPONSORING BROKER

C: 318-608-7848

O: 318-974-8185

heath@smalltownproperties.com

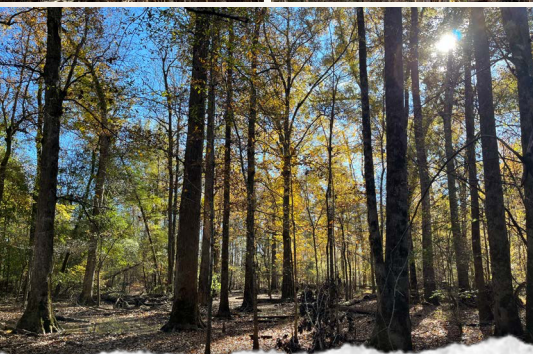
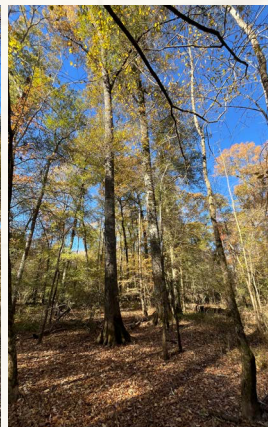
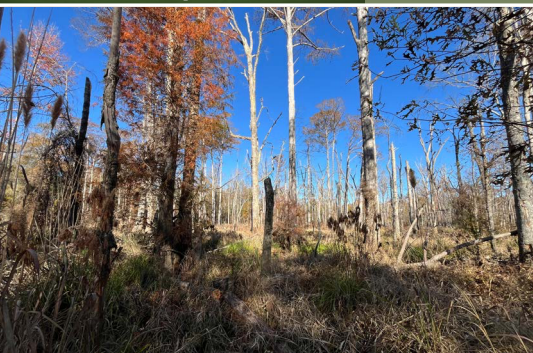
4848 Main St. - Flora, MS 39071

smalltownproperties.com

Information is believed to be accurate but not guaranteed.

CHOCTAW CREEK | 147.16 ± ACRES

JACKSON PARISH, LOUISIANA



SMALLTOWN
HUNTING PROPERTIES
& REAL ESTATESM

HEATH EUBANKS

SPONSORING BROKER

C: 318-608-7848

O: 318-974-8185

heath@smalltownproperties.com

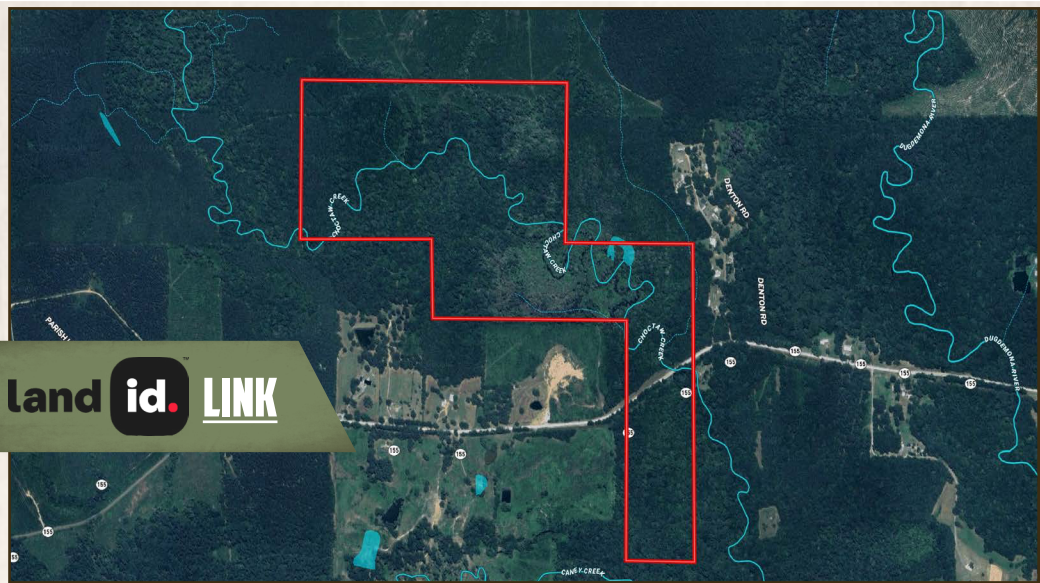
4848 Main St. - Flora, MS 39071

smalltownproperties.com

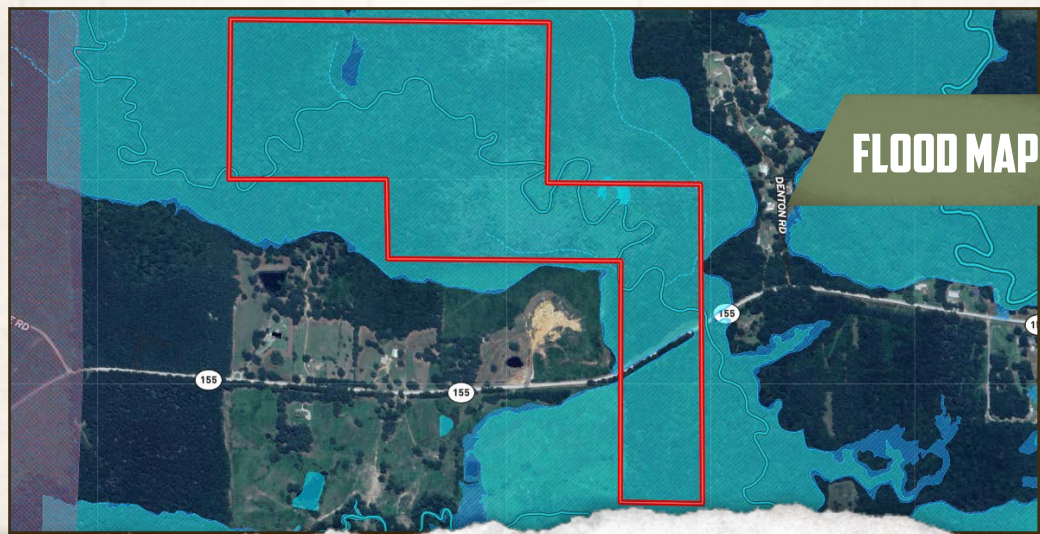
Information is believed to be accurate but not guaranteed.

CHOCTAW CREEK | 147.16 ± ACRES

JACKSON PARISH, LOUISIANA



land **id.** LINK



FLOOD MAP



SMALLTOWN
HUNTING PROPERTIES
& REAL ESTATESM

HEATH EUBANKS

SPONSORING BROKER

C: 318-608-7848

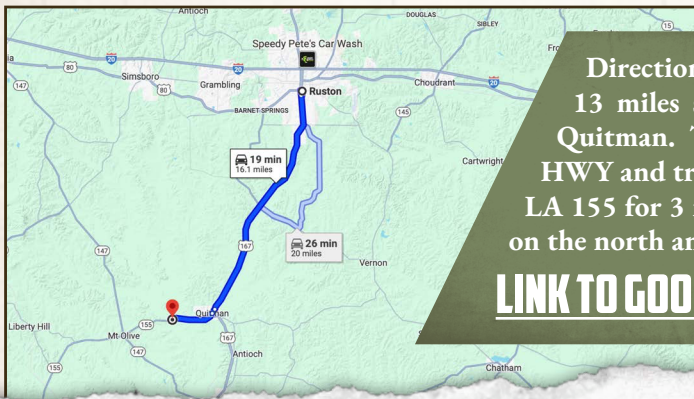
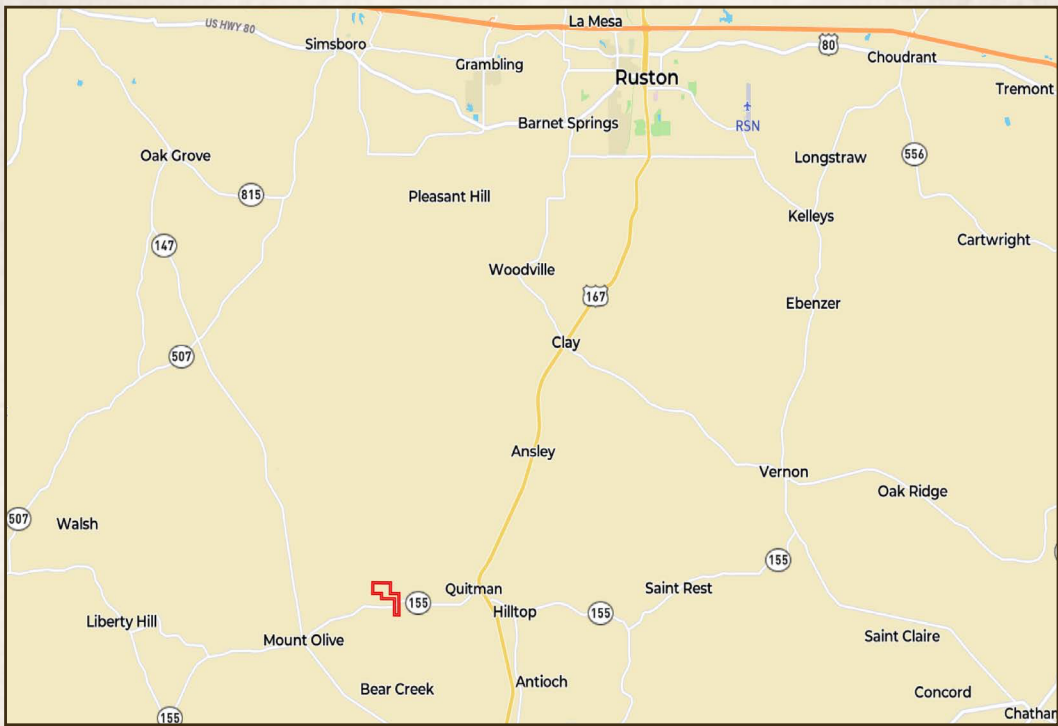
O: 318-974-8185

heath@smalltownproperties.com

4848 Main St. - Flora, MS 39071

smalltownproperties.com

Information is believed to be accurate but not guaranteed.



Directions From Ruston, LA: Travel 13 miles south on US 167 towards Quitman. Turn right onto Quitman HWY and travel 0.3 miles. Continue on LA 155 for 3 miles. The property will be on the north and south side of HWY 155.

[LINK TO GOOGLE MAP DIRECTIONS](#)



SMALLTOWN
HUNTING PROPERTIES
& REAL ESTATESM

HEATH EUBANKS

SPONSORING BROKER

C: 318-608-7848

O: 318-974-8185

heath@smalltownproperties.com

4848 Main St. - Flora, MS 39071

smalltownproperties.com

Information is believed to be accurate but not guaranteed.