

DREAM HOMESITE NEAR SMITH LAKE

.75 ± Acre Homesite in the Timberlake Subdivision
Winston County, AL



\$35,000

Looking to build your dream home near Smith Lake? This is your opportunity! This .75+/- acre lot is one of the last available in the Timberlake subdivision of Winston County, AL. Offering excellent privacy, it's just minutes from Duncan Bridge Marina and includes ready-to-use utilities and access to a common area dock. With great neighbors and an affordable price, this lot is the perfect homesite. Don't miss out—call or text Tom Smith to schedule a private showing!



**TOM
SMITH**

ALC®, BROKER

Office: 601.898.2772

Cell: 601.454.9397

Tom@TomSmithLand.com



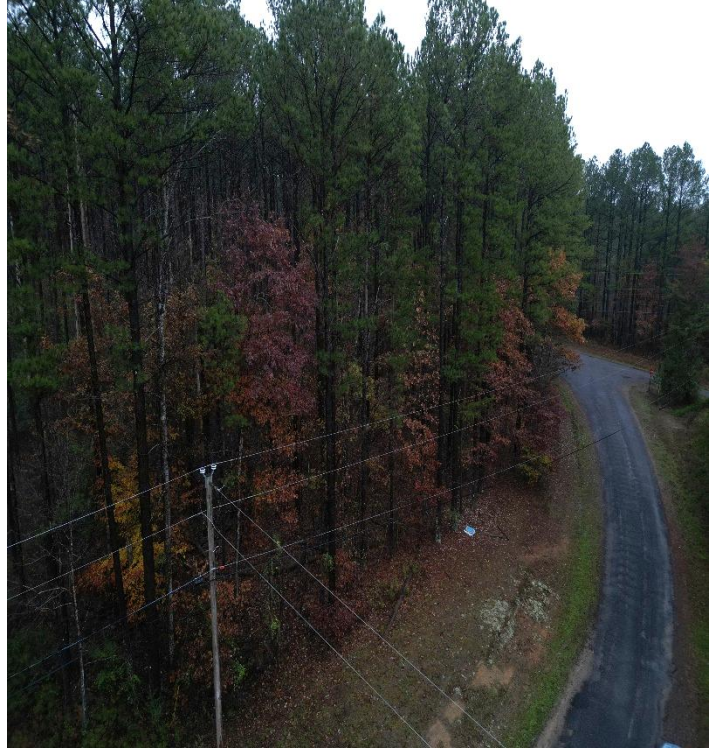
Expect More. Get More.

Call The Land Man Today!

TomSmithLandandHomes.com

Information is believed to be accurate but not guaranteed.





The Land & Homes Expert *You Can Trust!*

TOM SMITH

ALC®, BROKER

O: 601.898.2772 C: 601.454.9397

Tom@TomSmithLand.com

TomSmithLandandHomes.com



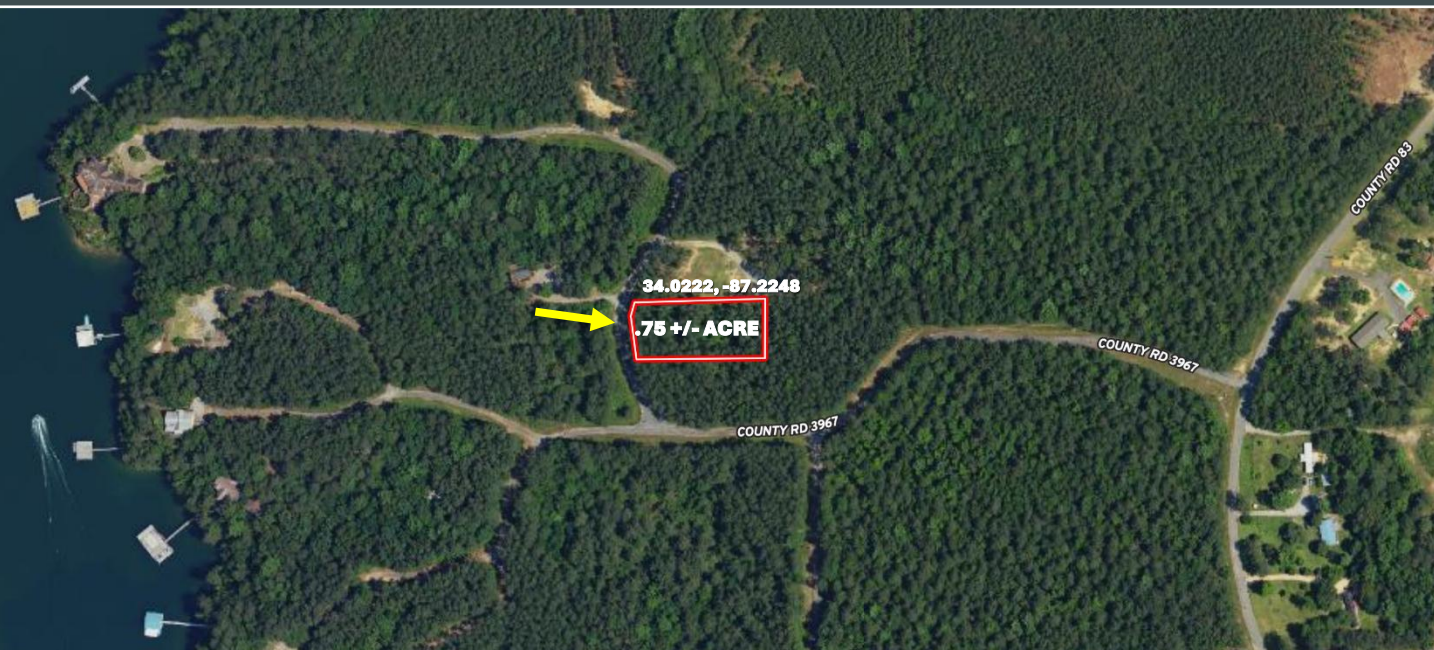
Expect More. Get More.



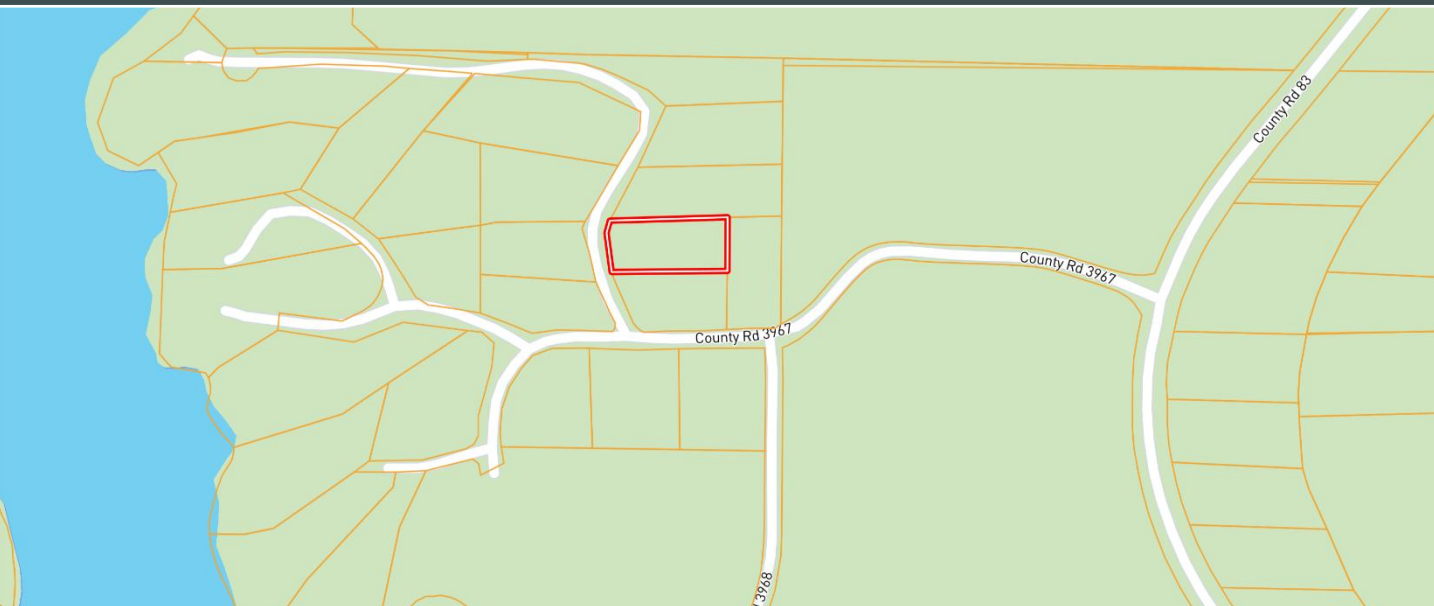
Information is believed to be accurate but not guaranteed.

AERIAL MAP

[Click Here for the LANDID
Interactive Map Link](#)



OWNERSHIP MAP



The Land & Homes Expert
You Can Trust!

TOM SMITH

ALC®, BROKER

O: 601.898.2772 C: 601.454.9397

Tom@TomSmithLand.com

TomSmithLandandHomes.com



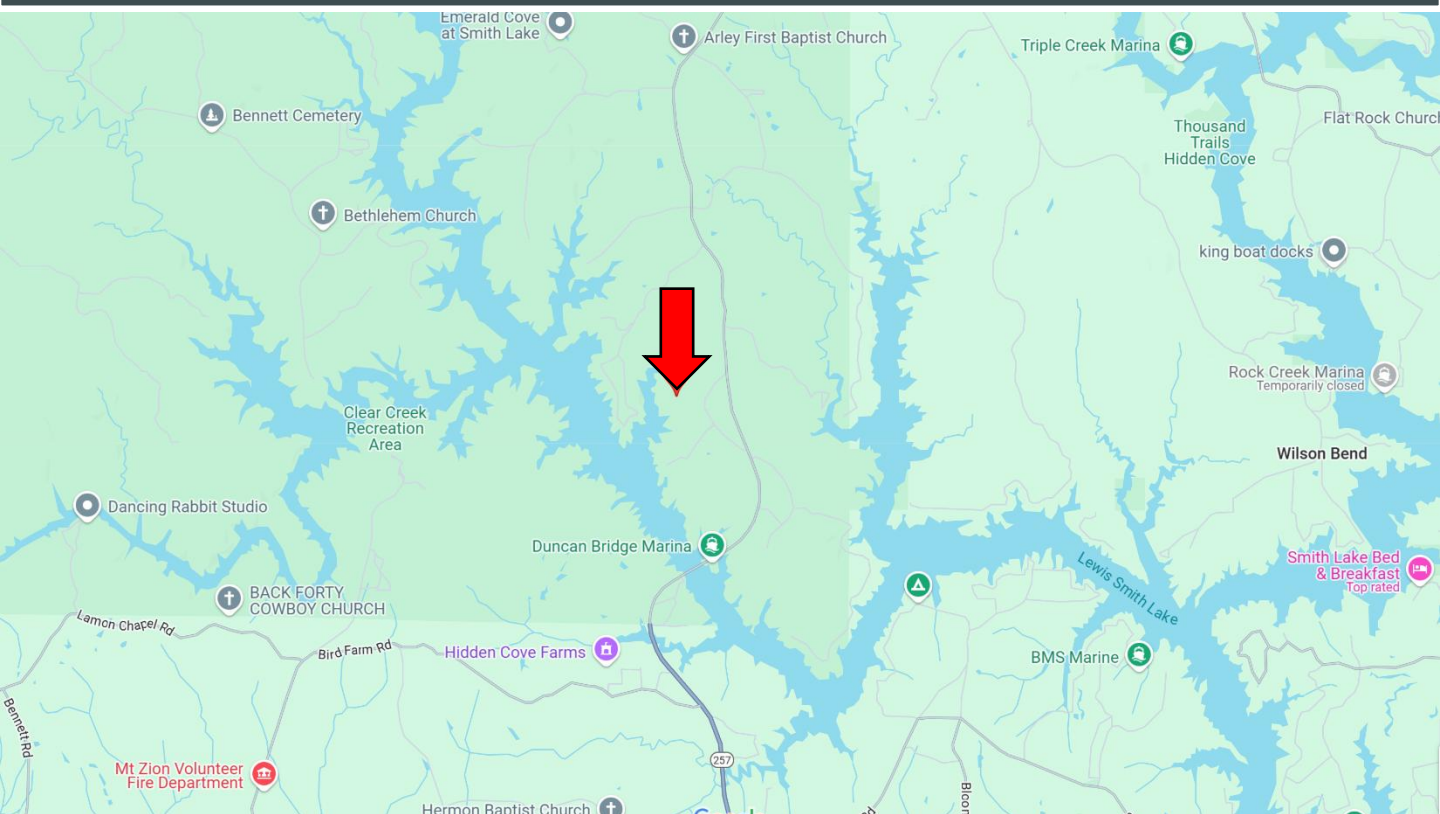
Expect More. Get More.



Information is believed to be accurate but not guaranteed.

DIRECTIONAL MAP

[Google Map Link](#)



Directions from Arley, AL: Travel south on County Road 41 for 4.2 miles. Turn right onto County Road 83 and travel 0.3 miles. Turn right onto County Road 3967 and travel 0.2 miles. Turn right onto County Road 3967. After 240 feet, the property will be on your right.



**TOM
SMITH**

ALC®, BROKER

Office: 601.898.2772

Cell: 601.454.9397

Tom@TomSmithLand.com



Expect More. Get More.

Call The Land Man Today!

TomSmithLandandHomes.com

Information is believed to be accurate but not guaranteed.

