

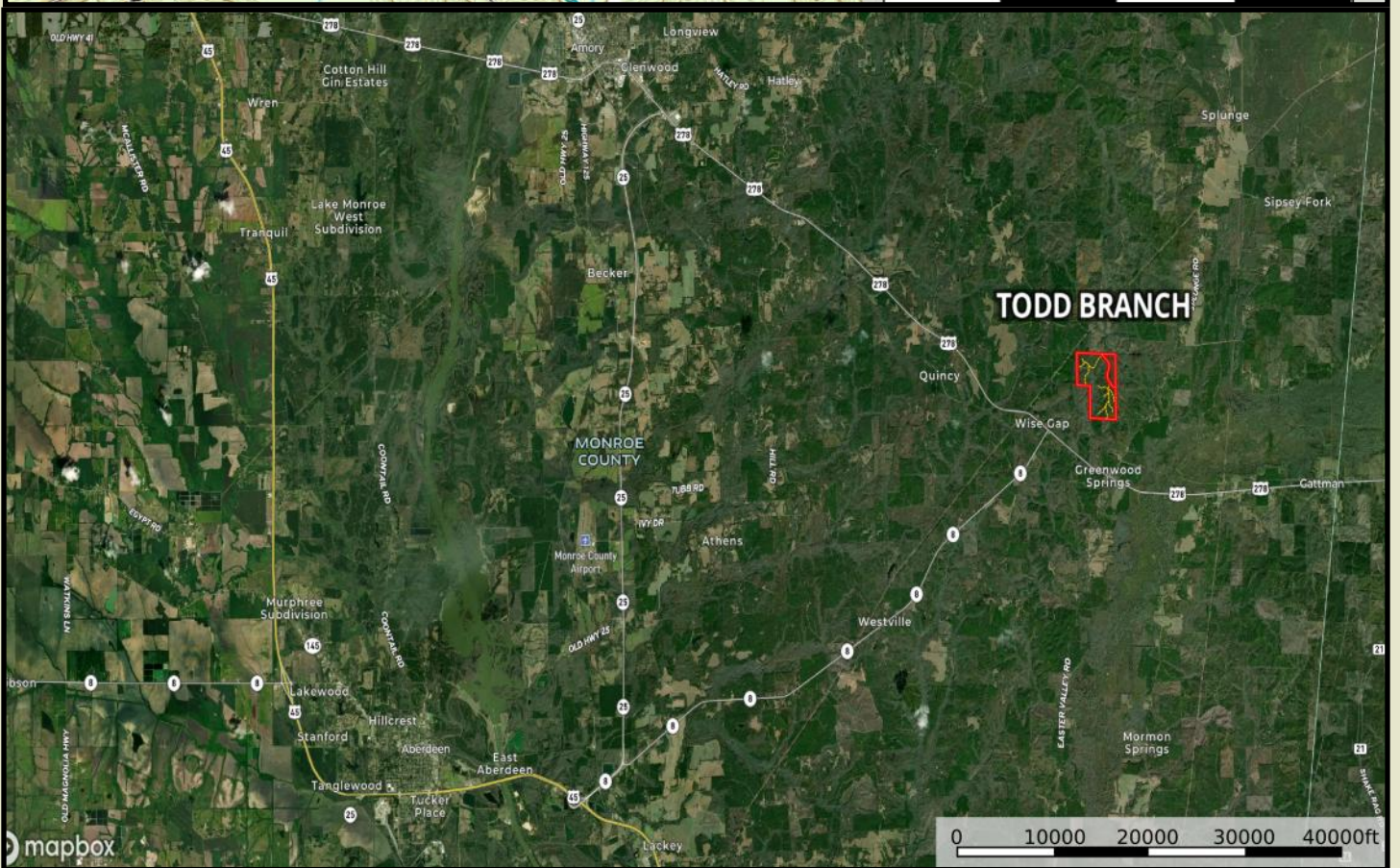
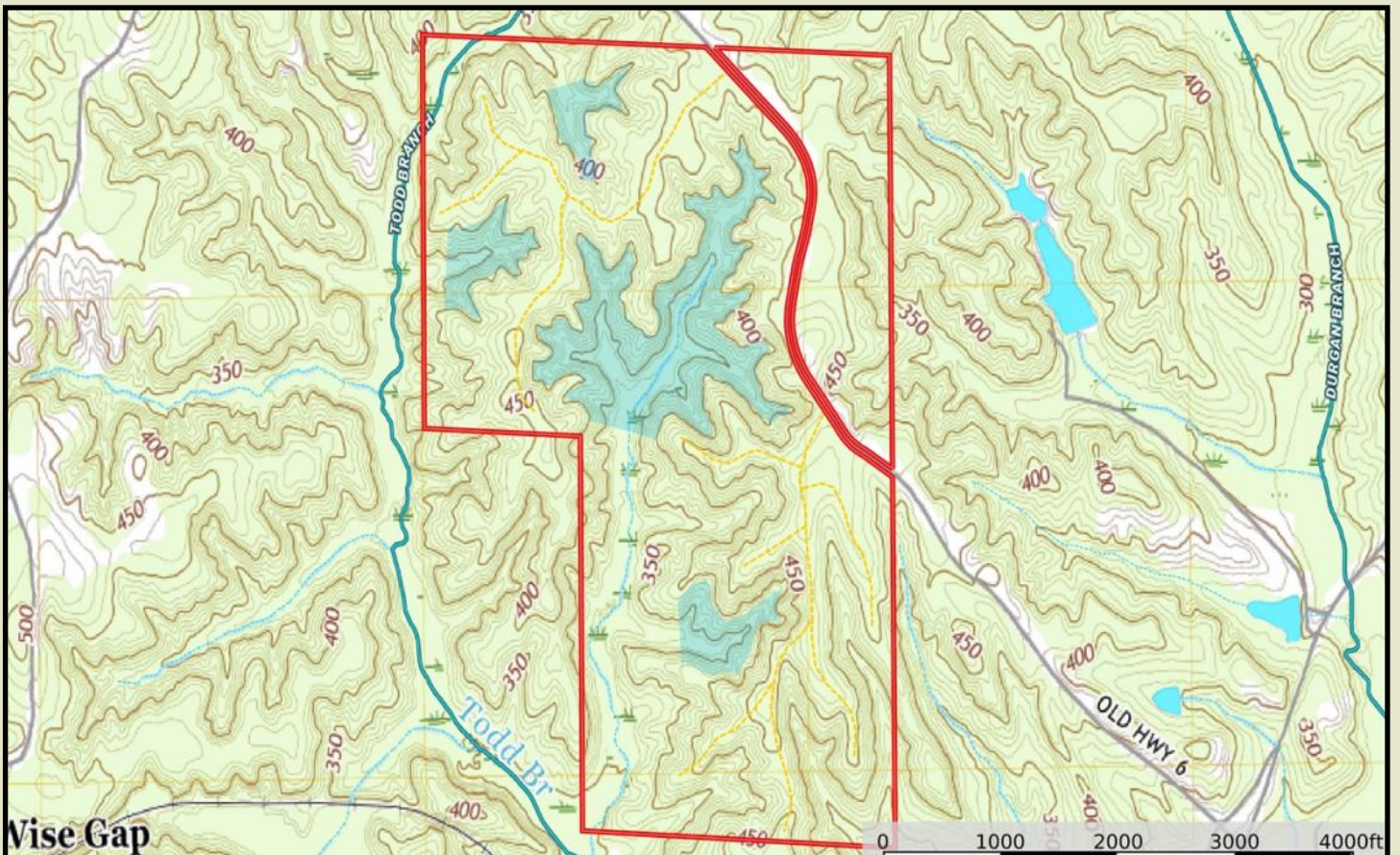
Todd Branch is 411 acres in the hills of east Monroe County, MS. Consisting of merchantable hardwood and pine timber, this tract is a good timberland investment with immediate returns available. The ridgetop interior road system allows easy travel across the tract with all roads accessing off Old Highway 6, a gravel county road. For the recreational user, the hilly topography lends itself to multiple lake/pond sites ranging from 5 to 40 acre impoundments. A staged timber harvest utilizing good wildlife management practices will improve the habitat for whitetail deer and eastern turkeys. Todd Branch, a running stream traverses the northwest corner of the property insuring a year round water source for wildlife. Don't miss this excellent mature timber and recreational investment property.

**\$2433.00 per acre / \$999,702.00**

**CONTACT: J Parker Sartain 601.506.2398**

All information contained herein is supplied by sources deemed reliable, but is not guaranteed by Sartain's Heritage Properties, its Brokers or Agents. Properties are subject to errors, omissions, correction, price change, prior sale or withdrawal without notice. All Buyer's agents are required be identified on the first contact with Broker/Agents of Sartain's Heritage Properties and must accompany the buyer on showings to receive full fee participation. Otherwise, the fee participation shall be at the sole discretion of the Broker and Sartain's Heritage Properties.





All information contained herein is supplied by sources deemed reliable, but is not guaranteed by Sartain's Heritage Properties, its Brokers or Agents. Properties are subject to errors, omissions, correction, price change, prior sale or withdrawal without notice. All Buyer's agents are required be identified on the first contact with Broker/Agents of Sartain's Heritage Properties and must accompany the buyer on showings to receive full fee participation. Otherwise, the fee participation shall be at the sole discretion of the Broker and Sartain's Heritage Properties.





All information contained herein is supplied by sources deemed reliable, but is not guaranteed by Sartain's Heritage Properties, its Brokers or Agents. Properties are subject to errors, omissions, correction, price change, prior sale or withdrawal without notice. All Buyer's agents are required be identified on the first contact with Broker/Agents of Sartain's Heritage Properties and must accompany the buyer on showings to receive full fee participation. Otherwise, the fee participation shall be at the sole discretion of the Broker and Sartain's Heritage Properties.