

# 18159 HWY 15 DECATUR, MS

## 6.4± Acres in Newton County



**\$550,000**

**This 3,200 square foot house sits on 6.4± acres on Hwy 15, just two miles north of Decatur in Newton County, MS. When you turn into the property, you will instantly notice the beautiful oaks throughout. The home features four bedrooms with two and a half baths. The sunroom and custom outdoor kitchen has a gas grill, stove, custom wood cabinets, and a wood-burning stone fireplace! The property also features a two-car garage and a detached two-car carport, a 40'x60' shop with stained concrete floors, cedar cabinets, a full bath, and a tool room. There is also central heat and air, a tankless water heater, and Wi-fi. This property also features a private water well, meaning no more water bills. There are also two rental properties on the back of the property, bringing in around \$1,500 a month in income. All this could be yours just minutes from Decatur, MS! To schedule a private showing, call or text Brooks!**



**BROOKS  
MAGEE**

REALTOR®

Office: 662.268.6333

Cell: 601.613.4568

[Brooks@TomSmithLand.com](mailto:Brooks@TomSmithLand.com)



Expect More. Get More.

**A Real Estate Expert You Can Trust**

[TomSmithLandandHomes.com](http://TomSmithLandandHomes.com)

Information is believed to be accurate but not guaranteed.





**A Real Estate Expert**  
*You Can Trust!*

**BROOKS MAGEE**

REALTOR®

O: 662.268.6333 C: 601.613.4568

Brooks@TomSmithLand.com

TomSmithLandandHomes.com

**Tom  
Smith  
LAND AND  
HOMES**

Expect More. Get More.

2011-2025  
BEST  
BROKERAGES

Information is believed to be accurate but not guaranteed.

# Trophy Room



**A Real Estate Expert**  
*You Can Trust!*

**BROOKS MAGEE**

REALTOR®

O: 662.268.6333 C: 601.613.4568

Brooks@TomSmithLand.com

TomSmithLandandHomes.com

**Tom  
Smith  
LAND AND  
HOMES**

Expect More. Get More.

LinAllypet  
2011-2025  
**BEST**  
BROKERAGES

Information is believed to be accurate but not guaranteed.

# Aerial Map



[Click Here for  
Interactive Map](#)

**A Real Estate Expert**  
*You Can Trust!*

**BROOKS MAGEE**

REALTOR®

O: 662.268.6333 C: 601.613.4568

Brooks@TomSmithLand.com

TomSmithLandandHomes.com



Expect More. Get More.



# Ownership Map



**A Real Estate Expert**  
*You Can Trust!*

**BROOKS MAGEE**  
REALTOR®

O: 662.268.6333 C: 601.613.4568

Brooks@TomSmithLand.com

TomSmithLandandHomes.com

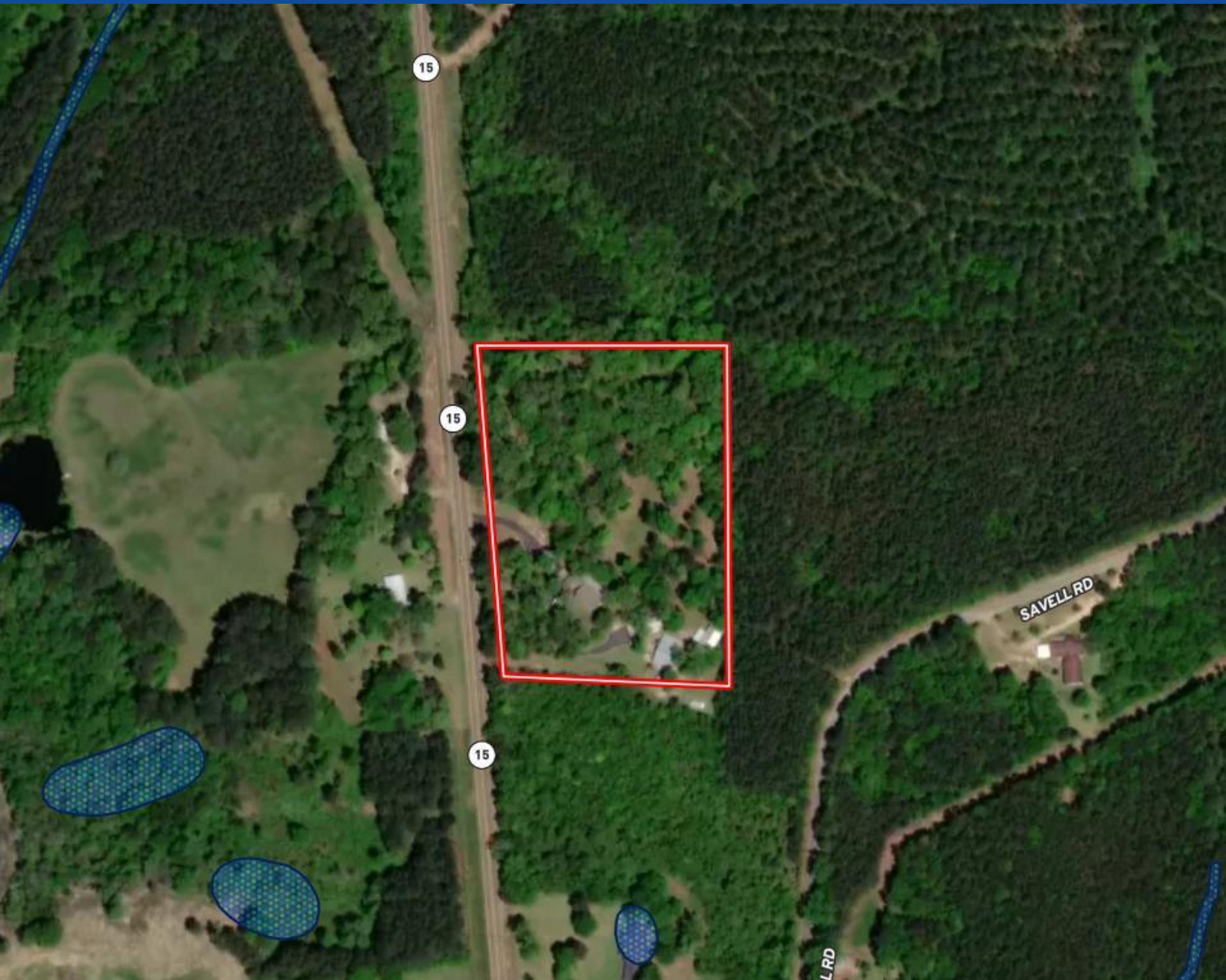


Expect More. Get More.

Information is believed to be accurate but not guaranteed.



# Flood Map



**A Real Estate Expert**  
*You Can Trust!*

**BROOKS MAGEE**  
REALTOR®

O: 662.268.6333 C: 601.613.4568

Brooks@TomSmithLand.com

TomSmithLandandHomes.com

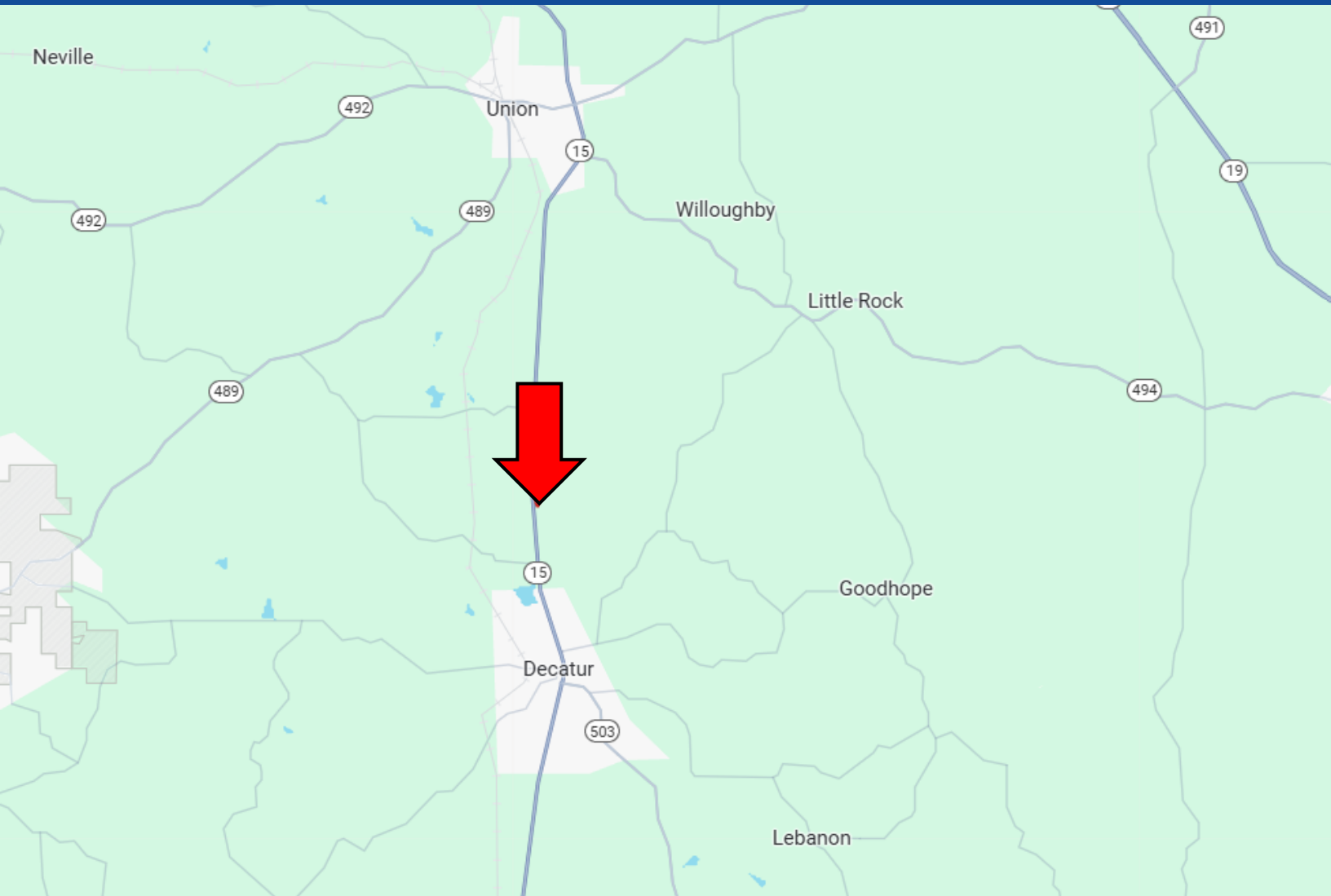


Expect More. Get More.



Information is believed to be accurate but not guaranteed.

# Directional Map



**Directions from Decatur, MS:** Travel Hwy MS-15 North for 2.8 miles. The house will be on your right.

[Google Map Link](#)



**BROOKS  
MAGEE**

REALTOR®

Office: 662.268.6333

Cell: 601.613.4568

Brooks@TomSmithLand.com



Expect More. Get More.

**A Real Estate Expert You Can Trust**

TomSmithLandandHomes.com

Information is believed to be accurate but not guaranteed.

