

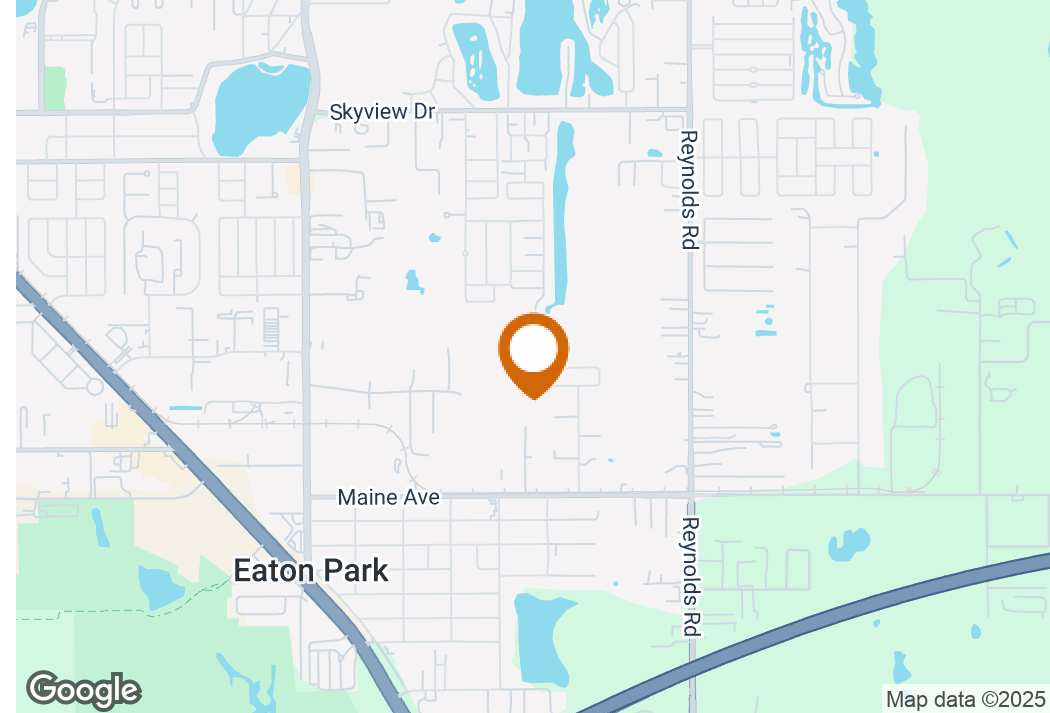
Industrial Development Acreage Near Polk Parkway

0 Maine Ave, Lakeland, Florida 33801

David Goffe, CCIM
863-272-7169
davidg@saundersrealestate.com
FL #SL578607

Zane Mueller
352-303-9322
zane@saundersrealestate.com

PROPERTY SUMMARY



Offering Summary

Sale Price:	\$700,000*
Lot Size:	5.25 ± Acres
Price / Acre:	\$133,333
Zoning:	GI
APN:	242827000000014022
Market:	Southeast Lakeland

Property Overview

This subject property consists of 5.25 ± acres of prime industrial development land on the southeast side of Lakeland, Florida, close to US Hwy 98 S and FL-570 (Polk Parkway). It has easy access to I-4 via FL-570 and Highway 60 via Hwy 98 S.

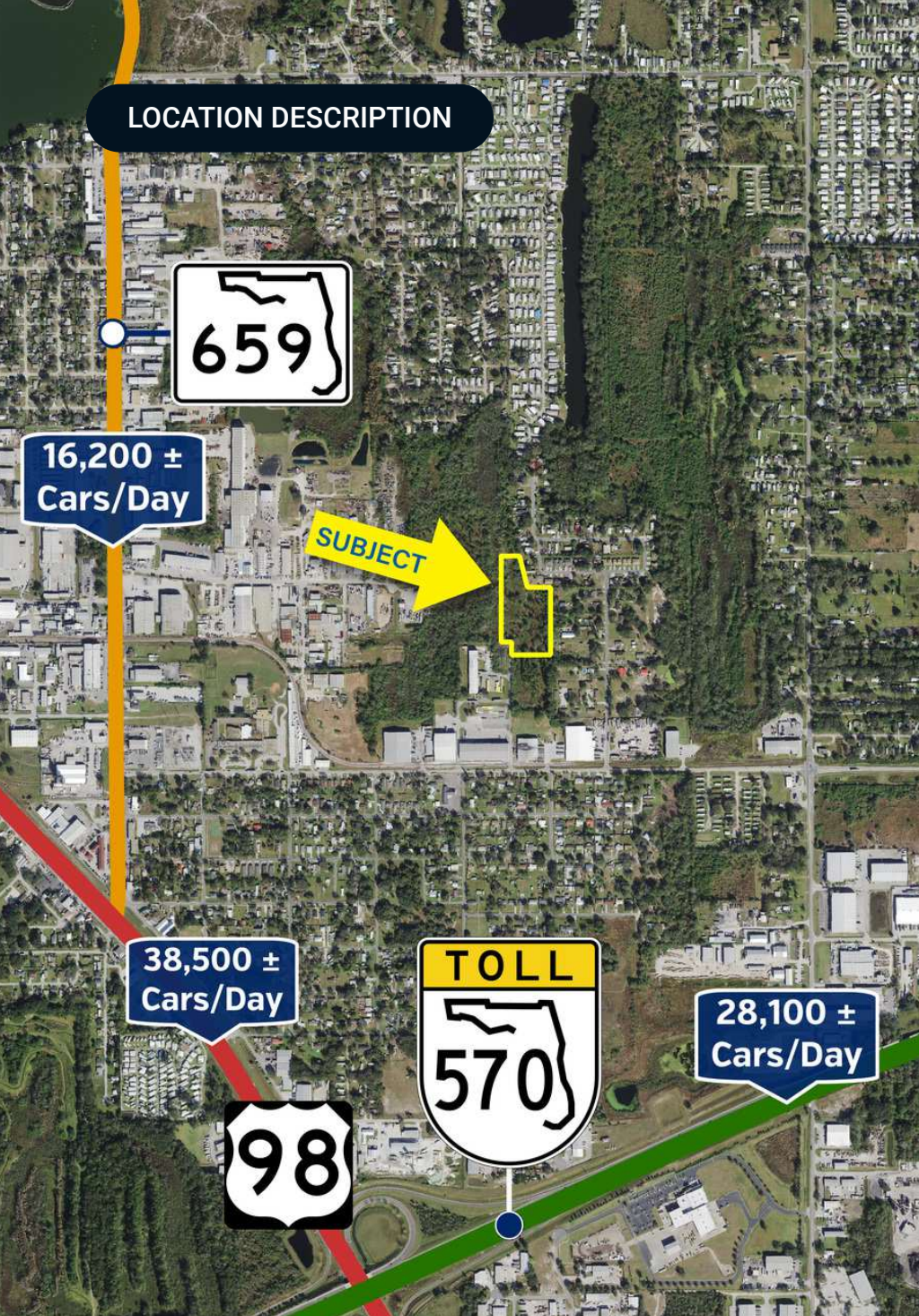
The property is suited for a variety of industrial uses, such as light manufacturing, warehousing, or semi-truck parking. Its advantageous location and excellent accessibility make it an ideal business investment.

Owner will consider financing. Please contact agent for more information.

Property Highlights

- Close proximity to US Highway 98, Polk Parkway, and I-4
- GI Zoning
- Surrounded by various industrial businesses

LOCATION DESCRIPTION



Location Description

This property is located 1 ± mile north of the intersection between FL-570 (Polk Parkway) and U.S Highway 98 in Lakeland, Florida. The Polk Parkway sees approximately 28,100 ± cars/day near the intersection while U.S Hwy 98 sees around 38,500 ± cars per day. SR-659 (Combee Road S.) sits just 0.6 miles west from the subject, and sees around 16,200 ± cars/day. I-4 is easily accessible, and takes approximately 15 ± minutes to get there via the Polk Parkway.

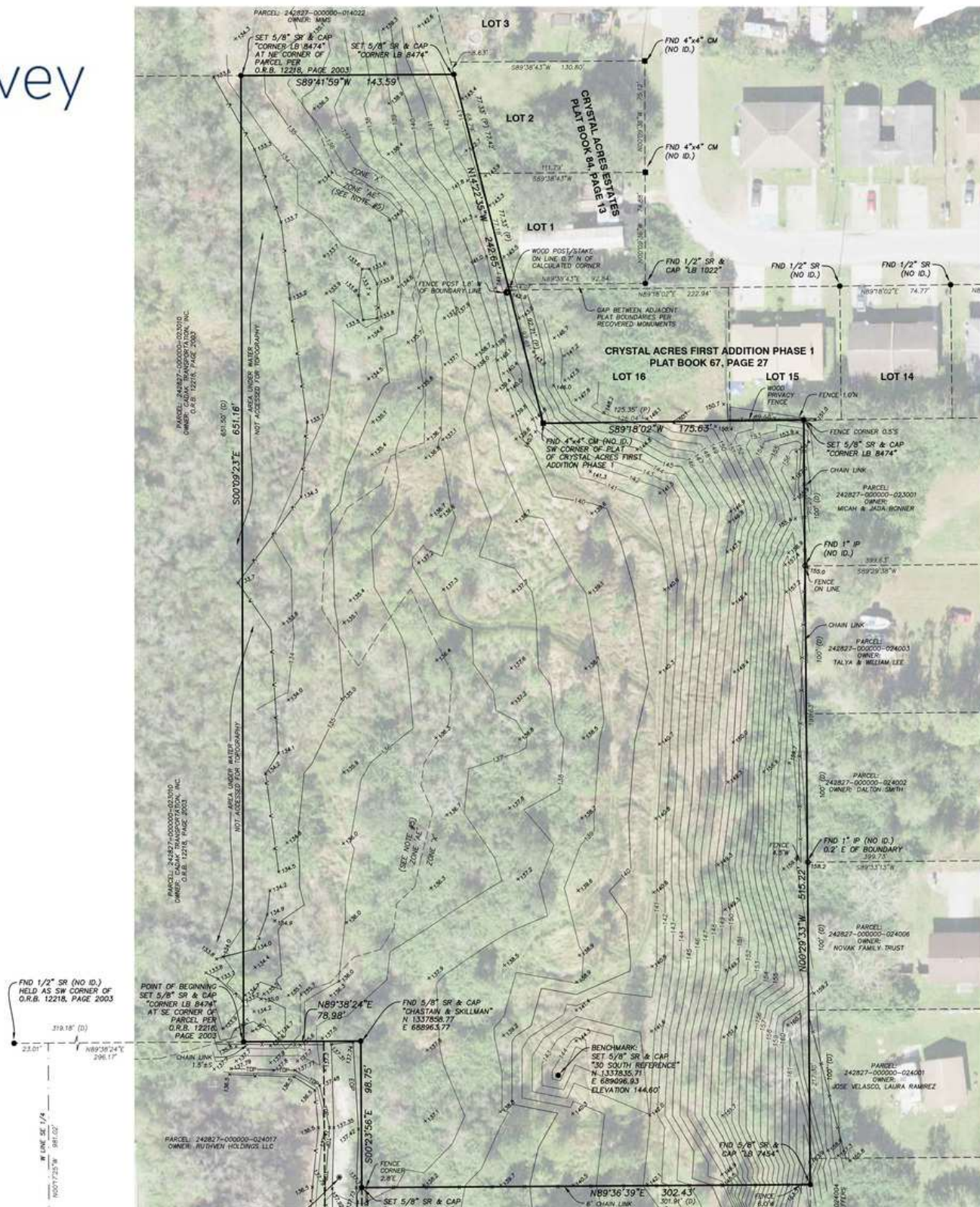
Several industrial businesses surround the subject, which include Mid-State, Wastequip, Packaging Corporation of America, Republic Services, and many others.



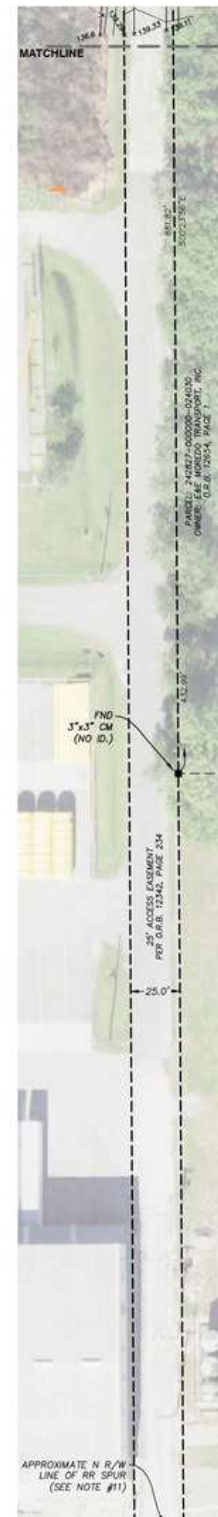
EASEMENT ACCESS

*Ingress/Egress/Utility Easement
to Maine Avenue*

Survey



DETAIL 'A'



HIGHWAY MAP



38,500 ±
Cars/Day



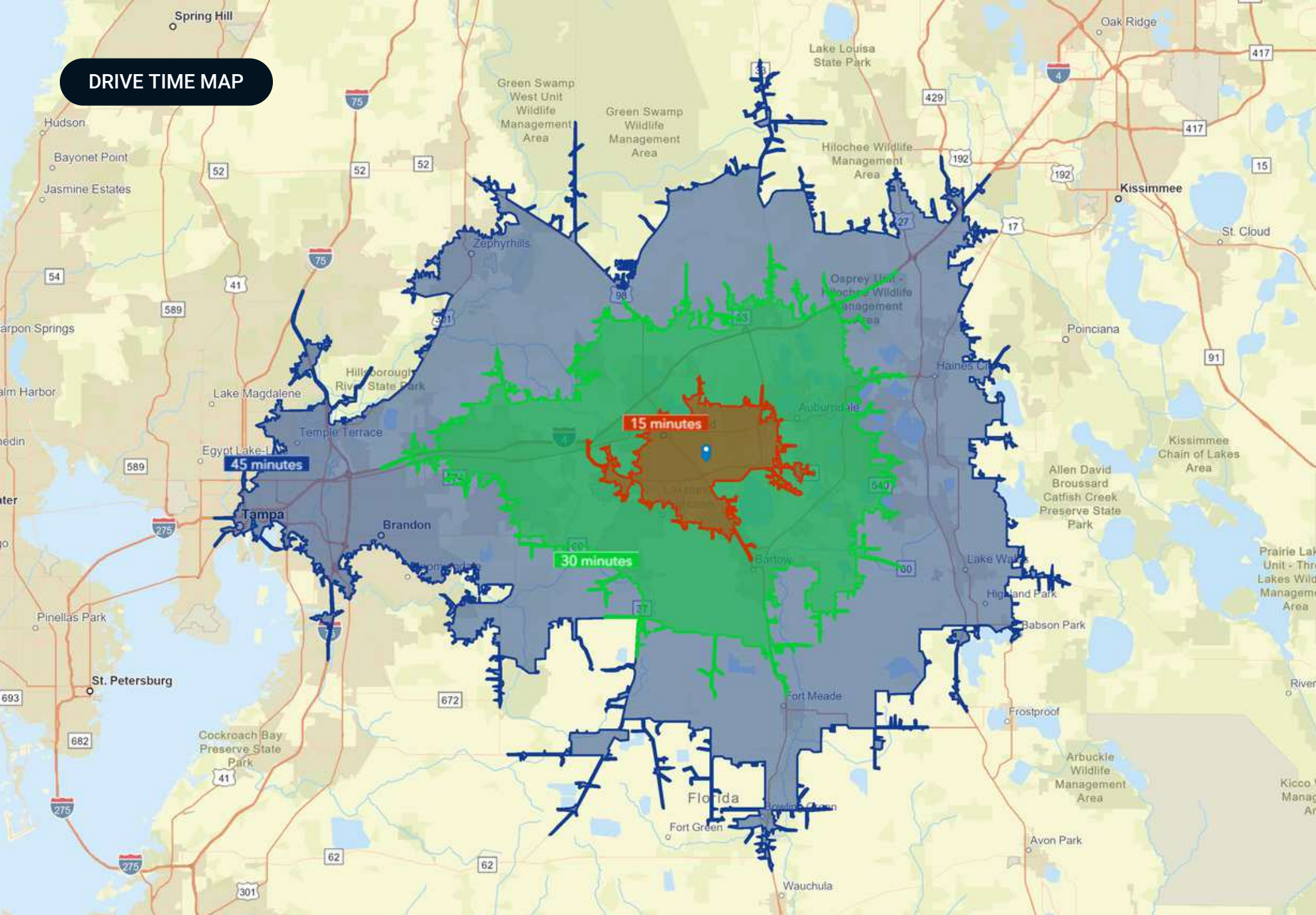
16,200 ±
Cars/Day

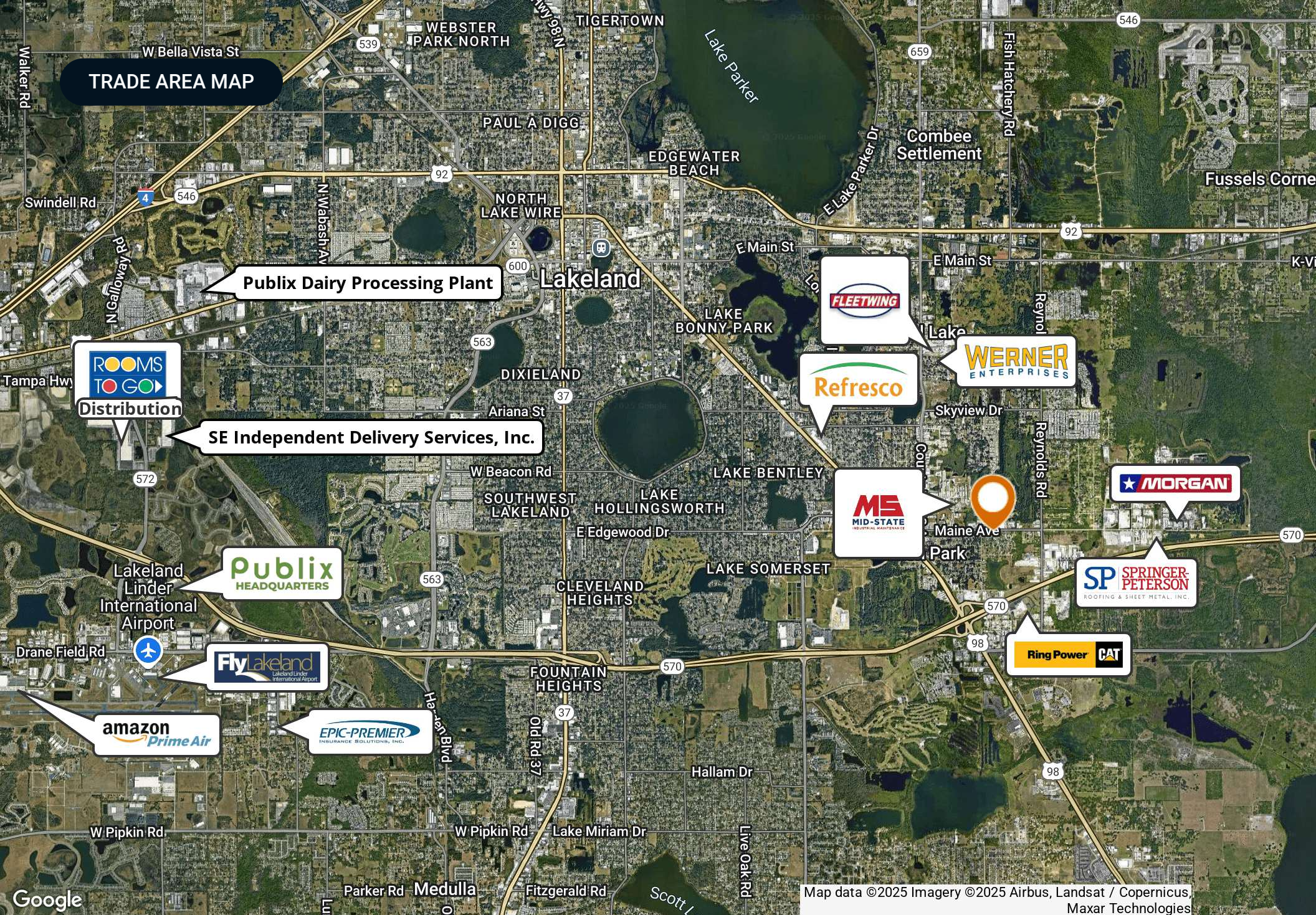
SUBJECT



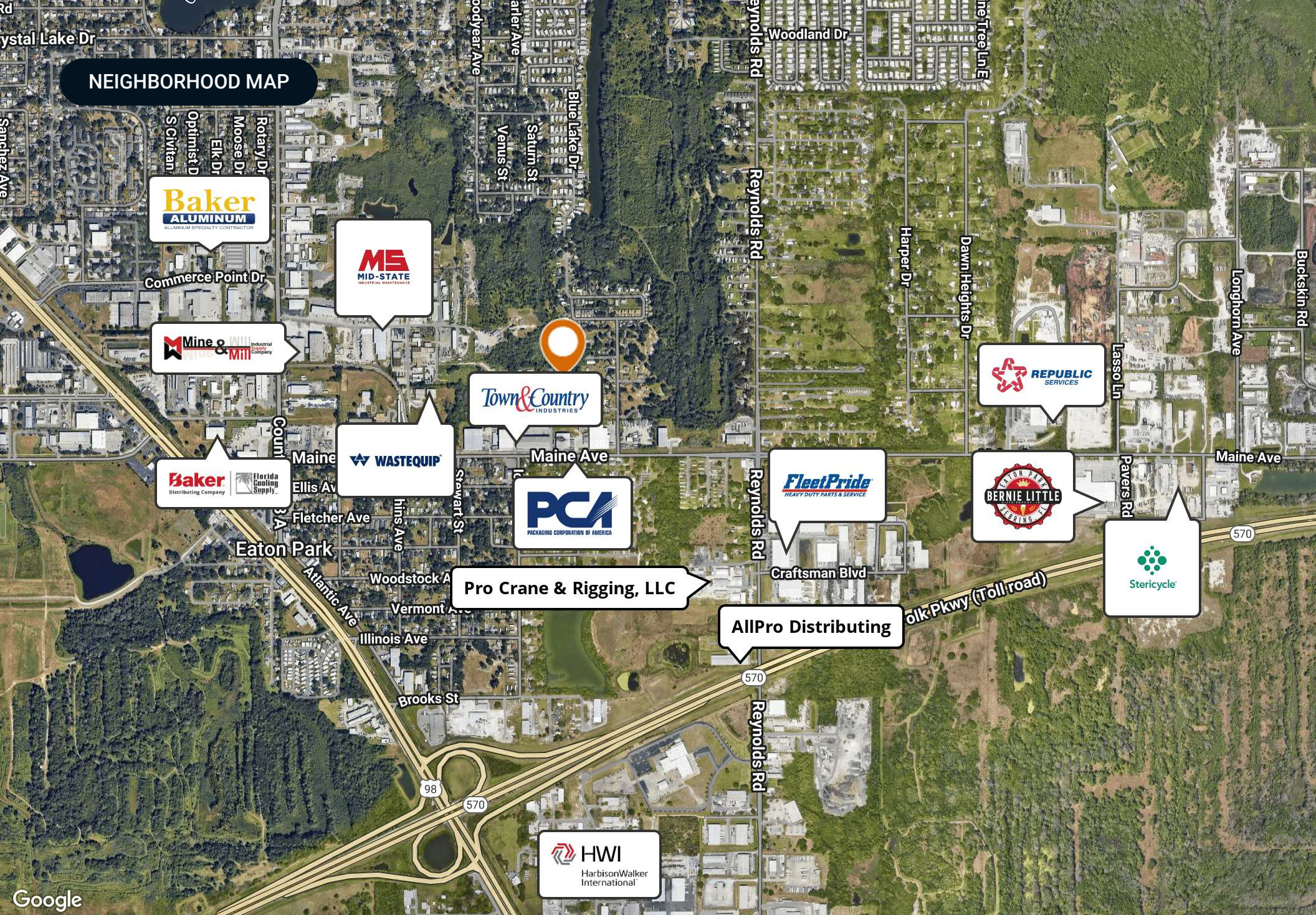
28,100 ±
Cars/Day

DRIVE TIME MAP





Map data ©2025 Imagery ©2025 Airbus, Landsat / Copernicus, Maxar Technologies



NEIGHBORHOOD MAP

Baker
ALUMINUM
ALUMINUM SPECIALTY CONTRACTOR

MS
MID-STATE
INDUSTRIAL MAINTENANCE

Mine & Mill
Industrial Company

Town & Country
INDUSTRIES

WASTEQUIP

Baker
Distributing Company

Florida Cooling Supply

PCA
PACKAGING CORPORATION OF AMERICA

Pro Crane & Rigging, LLC

FleetPride
HEAVY DUTY PARTS & SERVICE

AllPro Distributing

REPUBLIC
SERVICES

BERNIE LITTLE
PAVING

Stericycle

HWI
HarbisonWalker
International

DEMOGRAPHICS MAP & REPORT

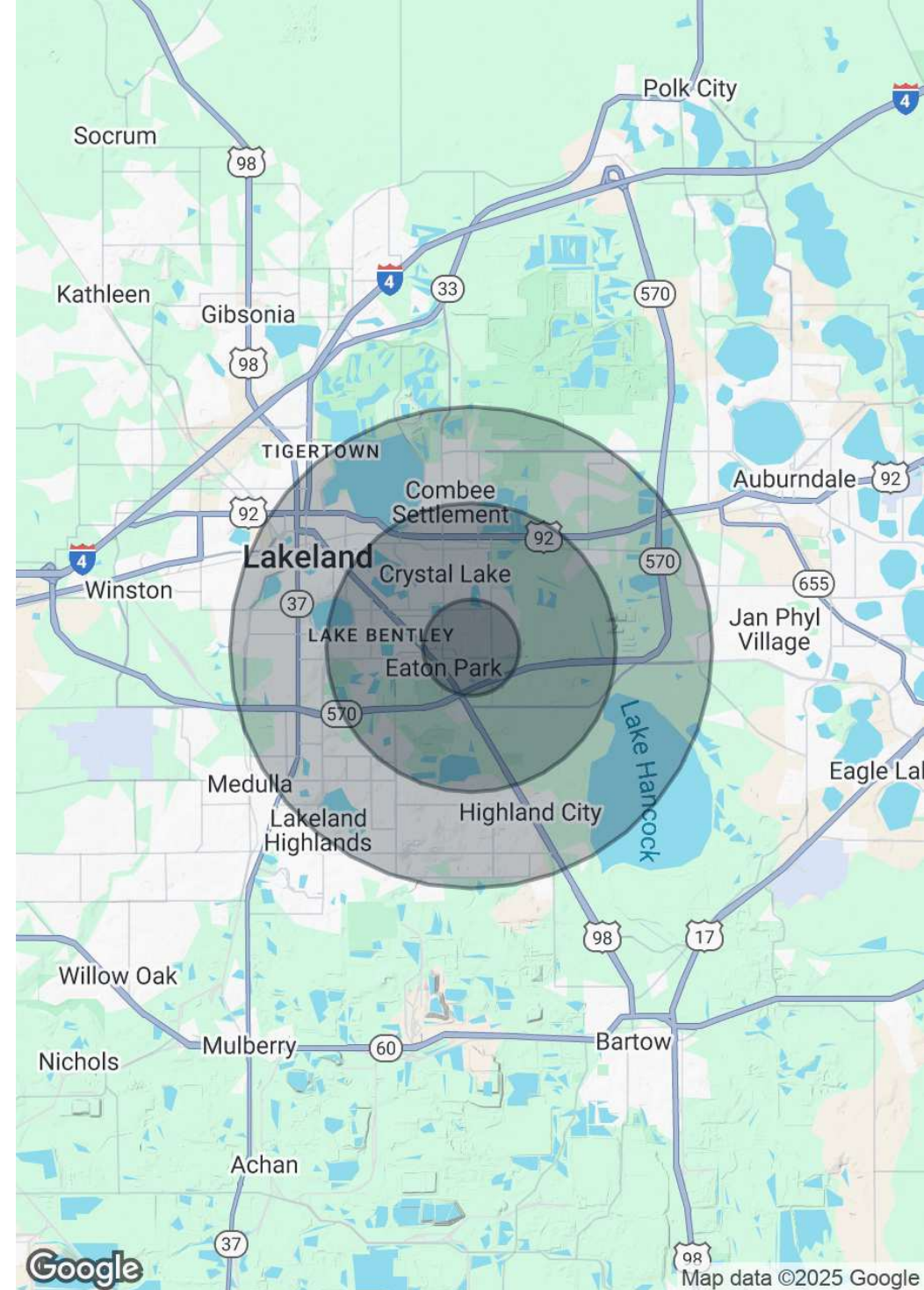
Population

	1 Mile	3 Miles	5 Miles
Total Population	6,547	39,058	121,324
Average Age	39	39	41
Average Age (Male)	38	38	40
Average Age (Female)	40	40	42

Households & Income

	1 Mile	3 Miles	5 Miles
Total Households	2,438	14,716	46,262
# of Persons per HH	2.7	2.7	2.6
Average HH Income	\$56,551	\$75,694	\$88,746
Average House Value	\$158,293	\$237,403	\$276,100

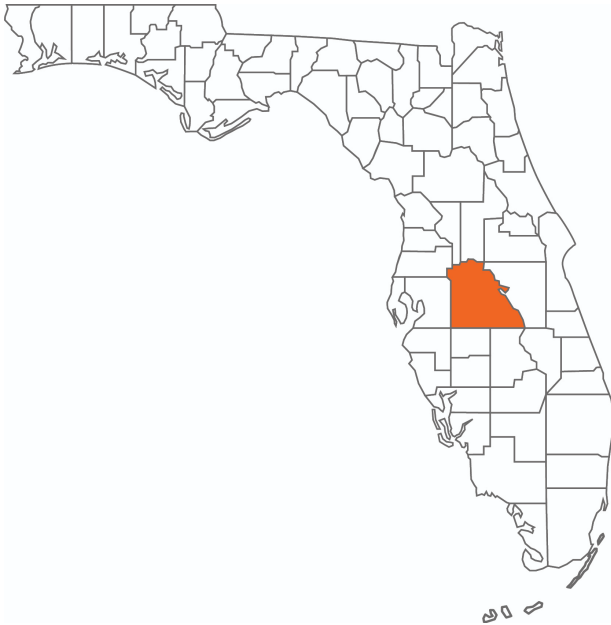
Demographics data derived from AlphaMap





COUNTY

Polk County FLORIDA



Founded	1861	Density	386.5 (2019)
County Seat	Bartow	Population	775,084 (2023)
Area	1,875 sq. mi.	Website	polk-county.net

In Florida, Polk County is a leading contributor to the state's economy and politics. Concerning the local economy, industries like citrus, cattle, agriculture, and phosphate have all played extremely vital roles in Polk County. An increase in tourist revenue has also significantly contributed to the county's economic growth in recent years. As the heart of Central Florida, Polk County's location between the Tampa and Orlando Metropolitan Areas has aided in the development and growth of the area. Residents and visitors alike are drawn to the unique character of the county's numerous heritage sites, cultural venues, stunning natural landscapes, and plentiful outdoor activities.



Lakeland

POLK COUNTY

Founded	1885
Population	117,606 (2023)
Area	74.4 sq mi
Website	lakelandgov.net
Major Employers	Publix Supermarkets Saddle Creek Logistics Geico Insurance Amazon Rooms to Go Welldyne Advance Auto Parts

Conveniently located along the I-4 corridor, Lakeland is a vibrant community offering great access to both Tampa and Orlando. With a population of just under 120,000, the city limits cover an impressive 74.4 square miles. At the core of its community, Lakeland is also home to an abundance of lakes that provide scenic views as well as ample recreational opportunities for its residents. Much of Lakeland’s culture and iconic neighborhoods are built around the 38 named lakes found within the city.

Just as vital to the community, Downtown Lakeland is a lively and enjoyable scene for residents and visitors alike. Dubbed 'Lakeland’s living room,' Downtown Lakeland truly embodies the city's community spirit. This dynamic community boasts quaint shops, casual restaurants, pubs, craft breweries, and fine-dining experiences in and around the historic brick buildings surrounding the historic Munn Park town square.

Embracing the City of Lakeland’s rich history, tree-lined brick streets can be found winding through various historic neighborhoods of the community. The city is also home to several educational institutions, including Southeastern University, Florida Polytechnic University, Polk State College, and Florida Southern College, which hosts Frank Lloyd Wright’s most extensive on-site collection of architecture.

ADVISOR BIOGRAPHY



David Goffe, CCIM

Senior Advisor

davidg@saundersrealestate.com

Direct: 877-518-5263 x416 | Cell: 863-272-7169

FL #SL578607

Professional Background

David A. Goffe, CCIM is a Senior Advisor at Saunders Real Estate.

David is a Florida native with a rich legacy in Florida real estate. His family was one of the earliest settlers in the Englewood Florida area in the 1800s and his father established HT Goffe Realty in Palm Beach Florida in the 1960s.

David has been active in the local real estate market for over 29 years and is a Certified Commercial Investment Member designee (CCIM). He also holds the Short Sale Resource certification (SFR) and the Certified Distressed Property Expert (CDPE) professional designations.

His broad range of experience includes sales and leasing for retail and industrial properties, single family investment portfolios, property development, and medical office and single tenant sales and leasing.

David uses computer-based models and mapping tools in combination with his years of experience in real estate to identify locations where businesses will succeed.

This level of detailed property knowledge allows David to excel both in "user seeking site" (site selection) as well as "site seeking use" (lease marketing for property owners/landlords) transactions. He is particularly talented in matching tenants with available space and/or sites for development.

David specializes in:

- Retail Properties
- Commercial Properties
- Industrial Properties
- Tenant Site Selection

Memberships

- Central Florida Commercial Association of Realtors® (CFCAR)
- Florida Realtors®
- National Association of Realtors® (NAR)
- International Council of Shopping Centers (ICSC)

ADVISOR BIOGRAPHY



Zane Mueller

Advisor & Head of Research

zane@saundersrealestate.com

Direct: **877-518-5263** | Cell: **352-303-9322**

Professional Background

Zane Mueller, MSRE is a Research Advisor at Saunders Real Estate.

Initially from Floral City, Florida, Zane has spent the entirety of his professional career in the agriculture industry, notably working for crop geneticists, produce brokers, and doing academic horticulture research. This hands-on experience, combined with an impressive educational background, allows him to deliver exceptional service and insights to each of his clients.

Zane holds a Bachelor of Science in Food and Resource Economics with a specialization in Agribusiness and Marketing Management, along with a Master of Science in Real Estate (MSRE) from the University of Florida. Upon graduation, Zane began working with SVN | Saunders Ralston Dantzler as a Market Analyst and later transitioned into an Advisor role, pairing experience in marketing with technical knowledge of Florida's landscape.

Zane's passion for the outdoors in Florida is exuded by his background in the agriculture industry and pastimes on the water. His family has long ties to North Central Florida and the Nature Coast, leading him to specialize in the region he is most passionate about.

Zane specializes in:

- Large Acreage Ranch and Farm Land
- Income Producing Agricultural and Commercial Land
- Recreational/Hunting Land
- Coastal Real Estate along the Gulf of Mexico
- Conservation Easements



For more information visit www.saundersrealestate.com

Headquarters

1723 Bartow Road
Lakeland, FL 33801
863.648.1528

Orlando

605 E Robinson Street
Suite 410
Orlando, FL 32801
407.516.4300

North Florida

356 NW Lake City
Avenue
Lake City, FL 32055
352.364.0070

Georgia

203 E Monroe Street
Thomasville, GA 31792
229.299.8600

Arkansas

112 W Center St, Suite
501
Fayetteville, AR 72701
479.582.4113

