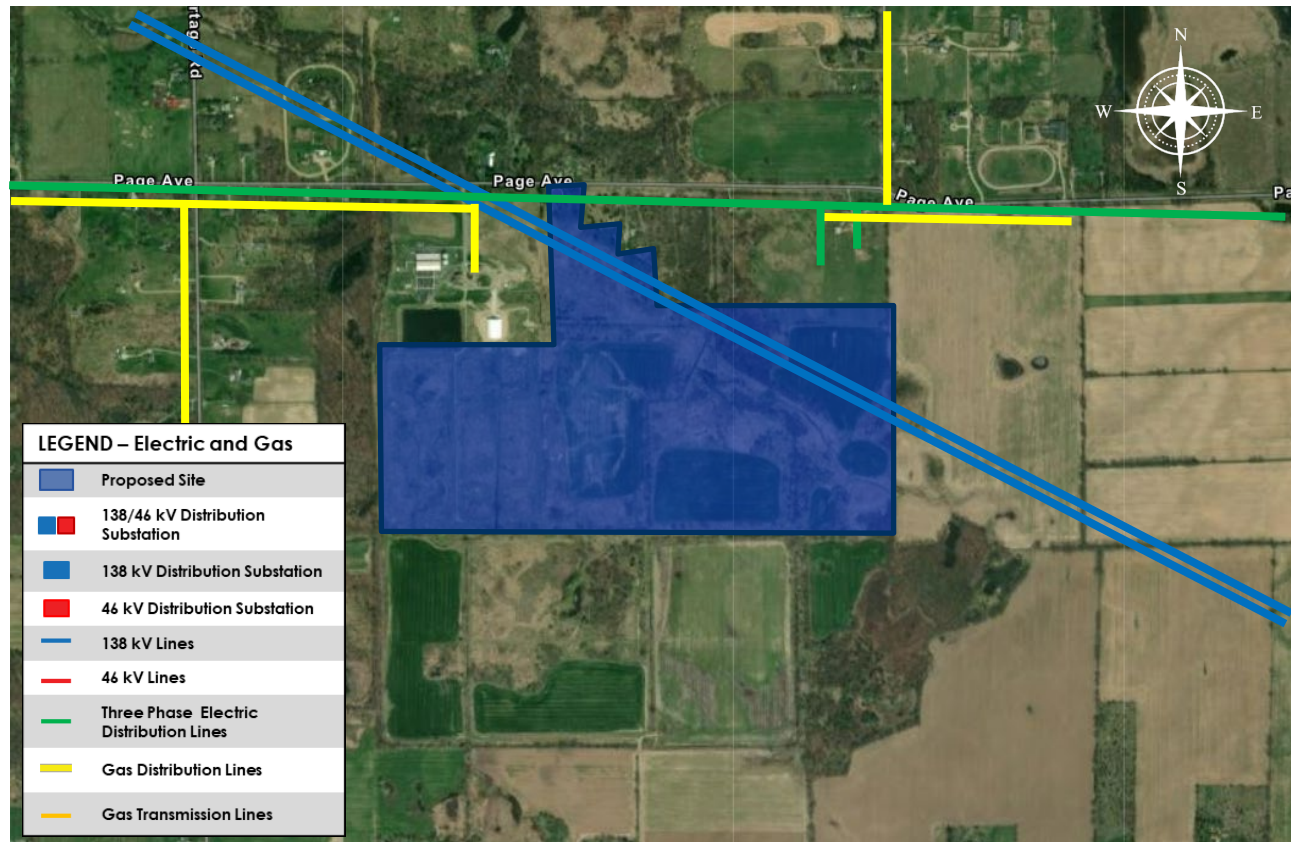


Jackson County/Leoni Twp

8521 Page Avenue



All existing facility locations are approximate and are not to be used for construction purposes.
Always contact MISS DIG 811 before you dig.

Electric Site Benefits

- Distribution System**
 - Predicted reliability of up to 99.99% for 4.8/8.32 kV system.
 - The distribution system is located onsite.
 - Current available capacity is 500 KVA. Additional capacity may be available with system upgrades.
- 46 kV System**
 - Predicted reliability of up to 99.961%. The predicted reliability percentage represents the estimated amount of time the facility is in service.
 - The 46 kV system is located approximately 1.0 miles away.
 - Facilities will be sized to meet the energy needs of the customer and available system capacity determined at the time of a specific request.
- 138 kV System**
 - Predicted reliability of up to 99.993%. The predicted reliability percentage represents the estimated amount of time the facility is in service.
 - The 138 kV system is located onsite.
 - Facilities will be sized to meet the energy needs of the customer and available system capacity determined at the time of a specific request.

Natural Gas Site Benefits

- Distribution System**
 - 6-inch high-capacity gas main with a maximum allowable operating pressure (MAOP) of 200 psig is currently available along Page Avenue approximately 4.5 miles from the site.
 - Two-inch medium-capacity gas mains with a maximum allowable operating pressure (MAOP) of 60 psig is currently available along Page Avenue 0.1 miles from the site.
 - Delivery pressure will depend on customer needs and hourly load.
 - System improvements may be needed based on hourly load and pressure needs.

For additional information

Scott Silverthorn, Economic Development Manager | 989-860-1813 |
scott.silverthorn@cmsenergy.com