

Commercial Vacant Land

5801 S. STATE ST, ANN ARBOR, MI 48108



FOR SALE



SUMMARY

Sale Price:	2.5 acres - \$375,000
Sale Price:	5 acres - \$575,000
2022 SEV:	\$273,700
2022 Taxes:	\$13,255
Zoning:	BD (Business District)

PROPERTY OVERVIEW

Preliminary site plan completed. Zoned Business District Commercial. Ideal location for Office, indoor recreation, Light manufacturing, Technology Centers/Office Research, Basic Research, Design, and Pilot or Experimental Product Development.

2.5 acres is contingent upon approval of split from larger parcel.

Municipal water and sewer available.

Building relationships.

208 East Washington Street Ann Arbor, MI 48104

734.663.0501

Charlie Koenn

734.926.0230

CKOENN@SWISHERCOMMERCIAL.COM

Bart Wise

734.358.0354

BARTW@SWISHERCOMMERCIAL.COM

SWISHERCOMMERCIAL.COM

Commercial Vacant Land for Sale

5801 S. STATE ST, ANN ARBOR, MI 48108



Swisher
COMMERCIAL



5 Acre Aerial

***Building
relationships.***

208 East Washington Street Ann Arbor, MI 48104

734.663.0501

Charlie Koenn

734.926.0230

CKOENN@SWISHERCOMMERCIAL.COM

Bart Wise

734.358.0354

BARTW@SWISHERCOMMERCIAL.COM

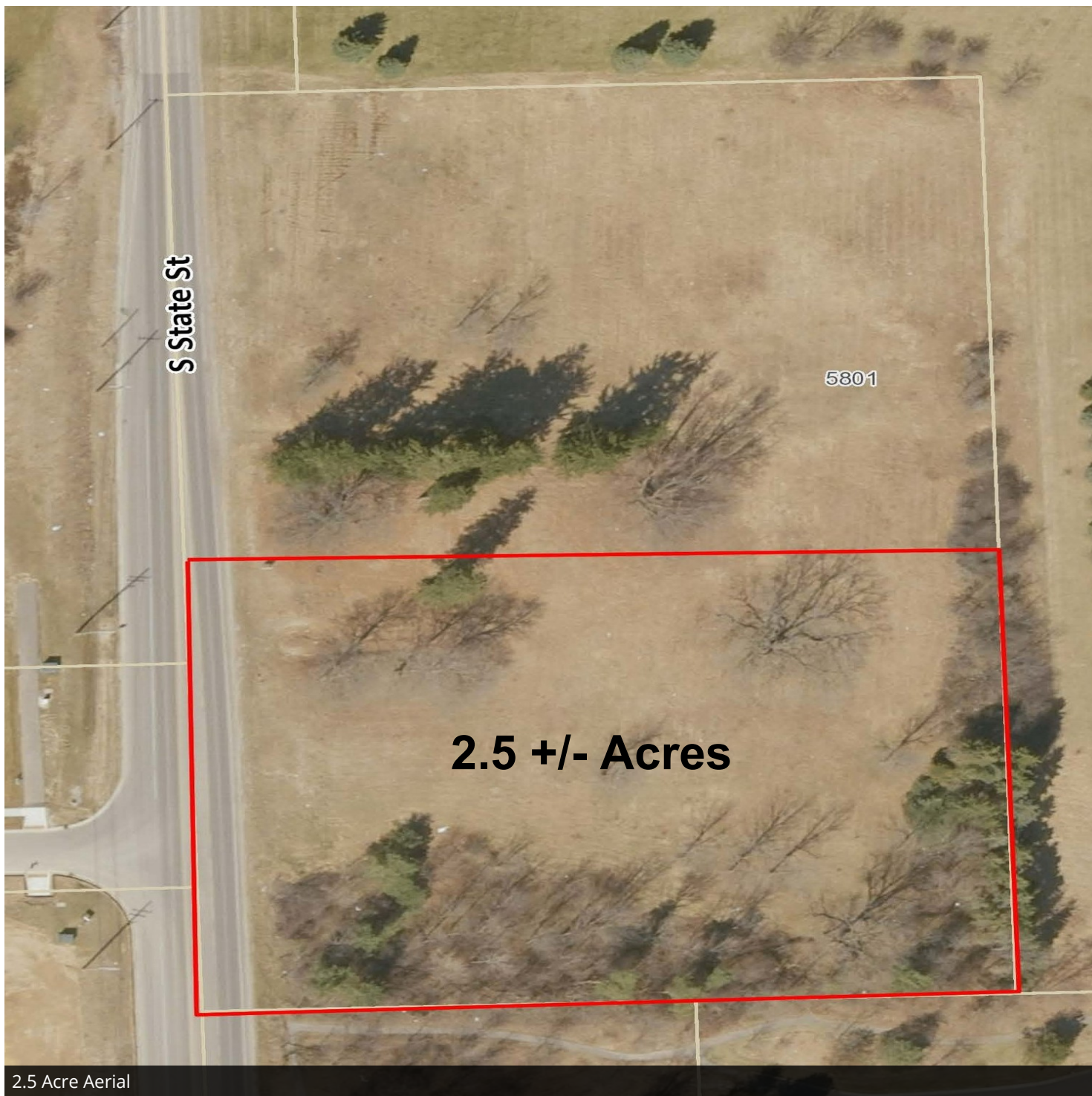
SWISHERCOMMERCIAL.COM

Commercial Vacant Land for Sale

5801 S. STATE ST, ANN ARBOR, MI 48108



Swisher
COMMERCIAL



2.5 Acre Aerial

***Building
relationships.***

208 East Washington Street Ann Arbor, MI 48104

734.663.0501

Charlie Koenn

734.926.0230

CKOENN@SWISHERCOMMERCIAL.COM

Bart Wise

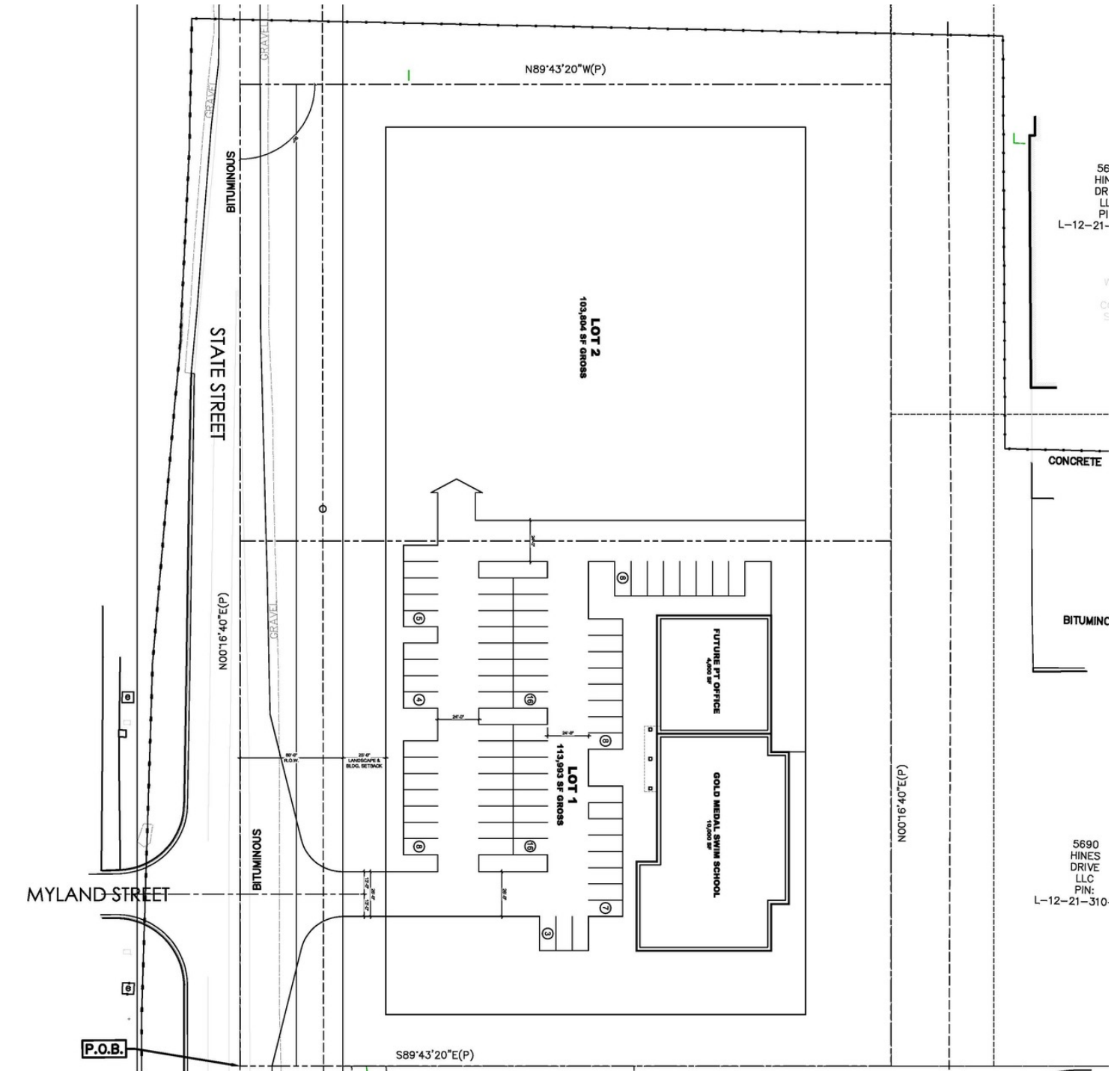
734.358.0354

BARTW@SWISHERCOMMERCIAL.COM

SWISHERCOMMERCIAL.COM

Commercial Vacant Land for Sale

5801 S. STATE ST, ANN ARBOR, MI 48108



Proposed site plan

Building relationships.

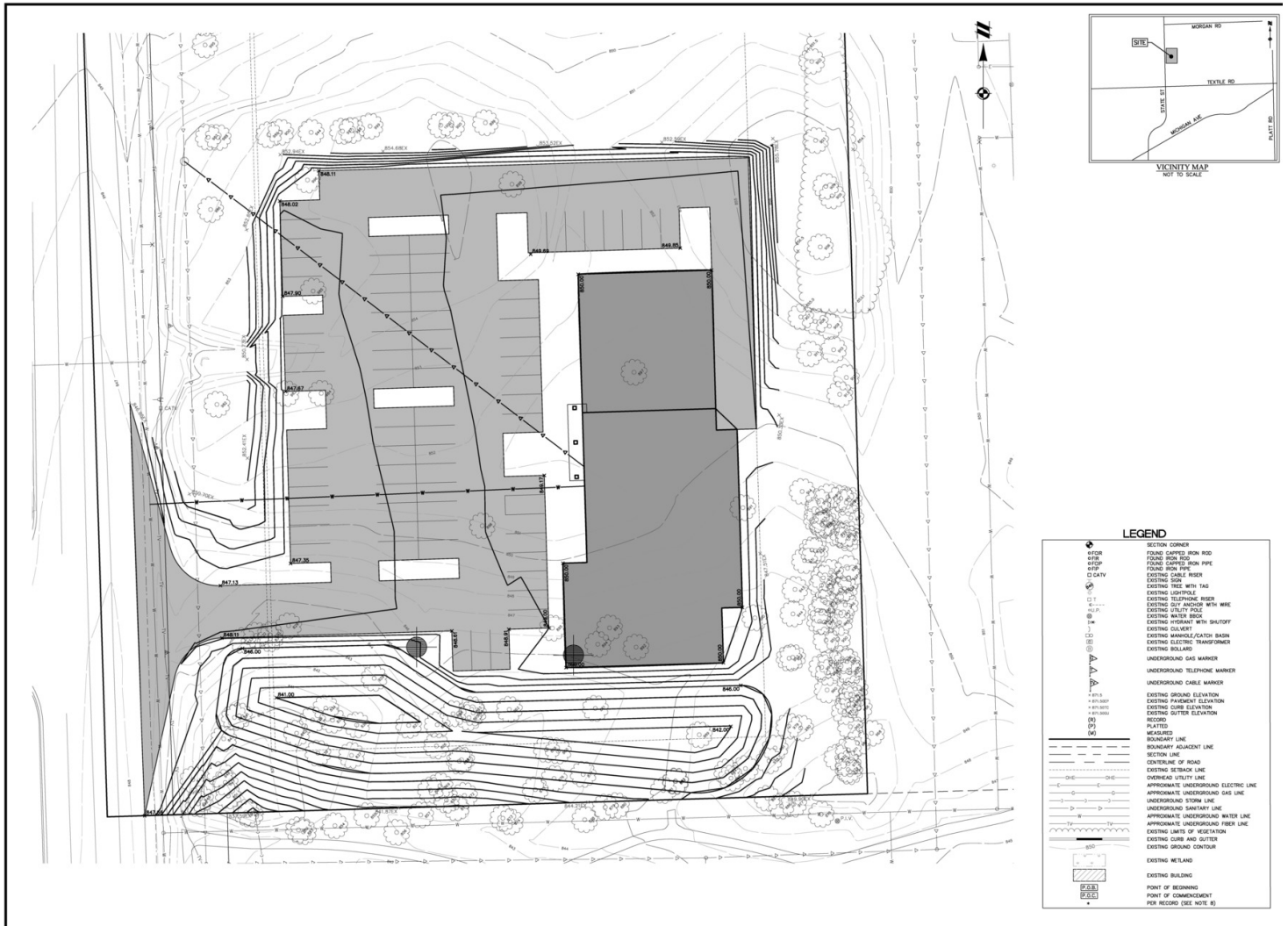
208 East Washington Street Ann Arbor, MI 48104 734.663.0501

Charlie Koenn 734.926.0230 CKOENN@SWISHERCOMMERCIAL.COM
 Bart Wise 734.358.0354 BARTW@SWISHERCOMMERCIAL.COM

SWISHERCOMMERCIAL.COM

Commercial Vacant Land for Sale

5801 S. STATE ST, ANN ARBOR, MI 48108



Proposed site plan

Building relationships.

208 East Washington Street Ann Arbor, MI 48104

734.663.0501

Charlie Koenn
Bart Wise

734.926.0230
734.358.0354

CKOENN@SWISHERCOMMERCIAL.COM
BARTW@SWISHERCOMMERCIAL.COM

SWISHERCOMMERCIAL.COM

Commercial Vacant Land for Sale

5801 S. STATE ST, ANN ARBOR, MI 48108



Swisher
COMMERCIAL



DEMOGRAPHICS	1 MILE	3 MILES	5 MILES
Total population	1,364	20,096	102,058
Median age	38.6	40.0	37.9
Median age (Male)	36.0	37.9	36.3
Median age (Female)	43.3	42.9	38.8
Total households	494	8,368	42,333
Total persons per HH	2.8	2.4	2.4
Average HH income	\$165,891	\$123,118	\$103,056
Average house value	\$713,775	\$568,518	\$353,655

Google

Imagery ©2022 CNES / Airbus, Maxar Technologies, U.S. Geological Survey, USDA/FPAC/GEO

***Building
relationships.***

208 East Washington Street Ann Arbor, MI 48104

734.663.0501

Charlie Koenn

734.926.0230

CKOENN@SWISHERCOMMERCIAL.COM

Bart Wise

734.358.0354

BARTW@SWISHERCOMMERCIAL.COM

SWISHERCOMMERCIAL.COM