

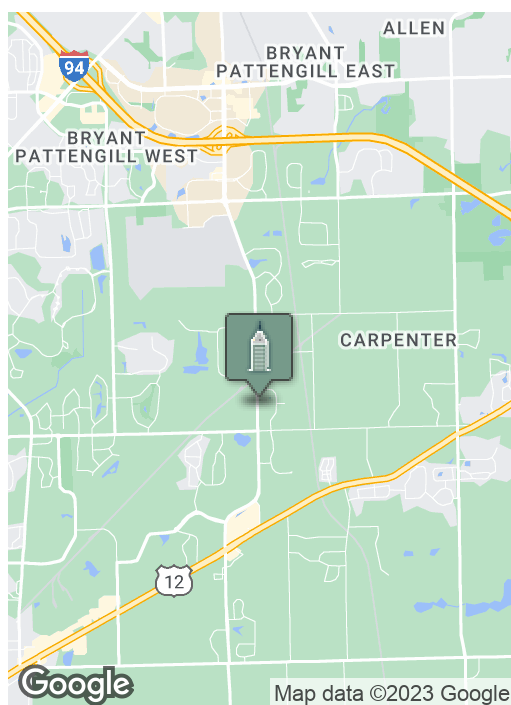
Commercial Vacant Land

5801 S. STATE ST, ANN ARBOR, MI 48108



Swisher
COMMERCIAL

FOR SALE



SUMMARY

Sale Price:	\$470,000
Acreage:	5 AC
2022 SEV:	\$273,700
2022 Taxes:	\$13,255
Zoning:	BD (Business District)
Terms:	Seller financing available for qualified buyer, Cash, 1031Exchange

PROPERTY OVERVIEW

Preliminary site plan completed. Zoned Business District Commercial. Ideal location for office, indoor recreation, light manufacturing, technology center/office research, basic research, design, and pilot or experimental product development.

Municipal water and sewer available.

***Building
relationships.***

208 East Washington Street Ann Arbor, MI 48104

734.663.0501

Charlie Koenn

734.926.0230

CKOENN@SWISHERCOMMERCIAL.COM

Bart Wise

734.358.0354

BARTW@SWISHERCOMMERCIAL.COM

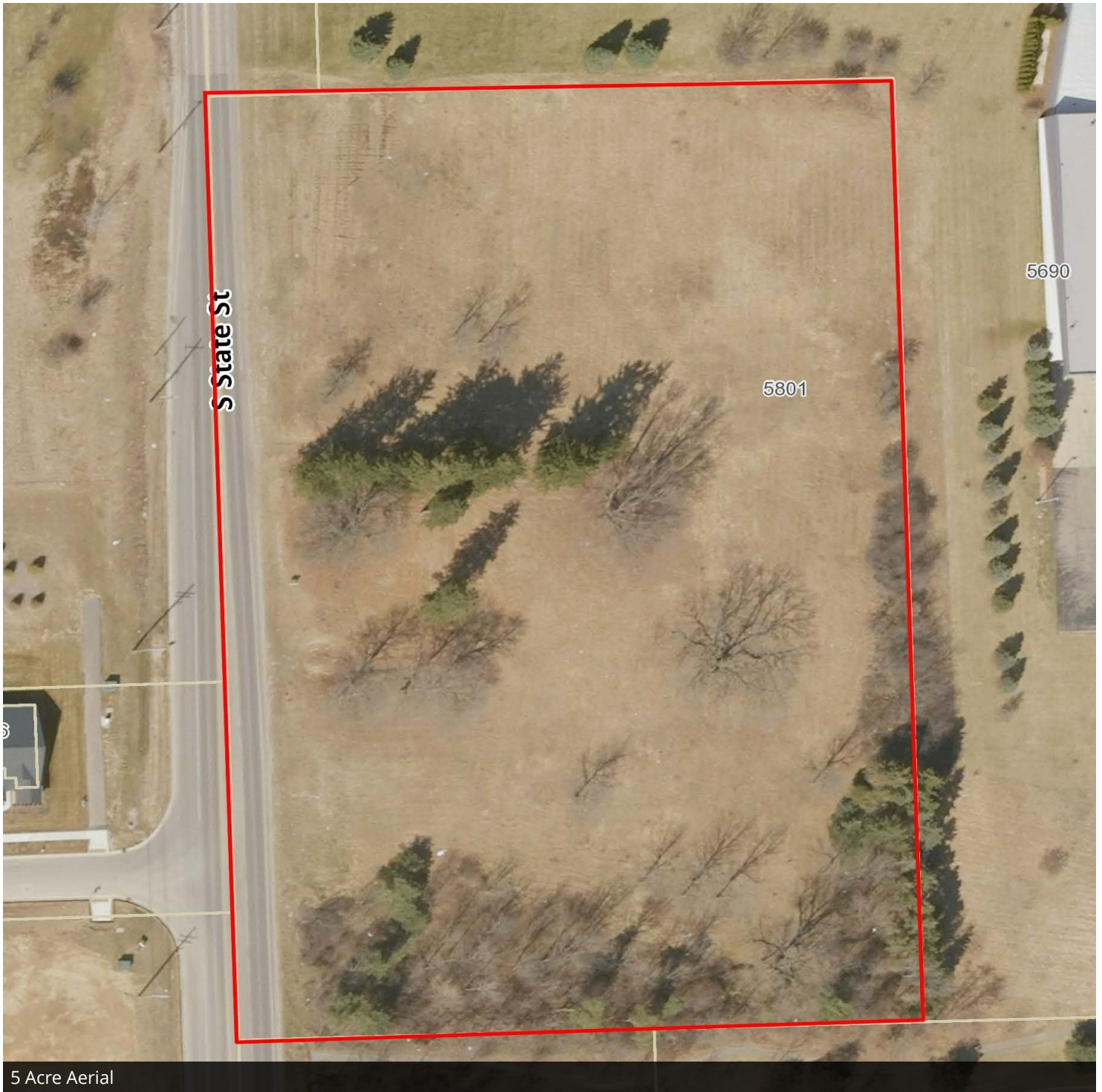
SWISHERCOMMERCIAL.COM

Commercial Vacant Land for Sale

5801 S. STATE ST, ANN ARBOR, MI 48108



Swisher
COMMERCIAL



5 Acre Aerial

***Building
relationships.***

208 East Washington Street Ann Arbor, MI 48104

734.663.0501

Charlie Koenn

734.926.0230

CKOENN@SWISHERCOMMERCIAL.COM

Bart Wise

734.358.0354

BARTW@SWISHERCOMMERCIAL.COM

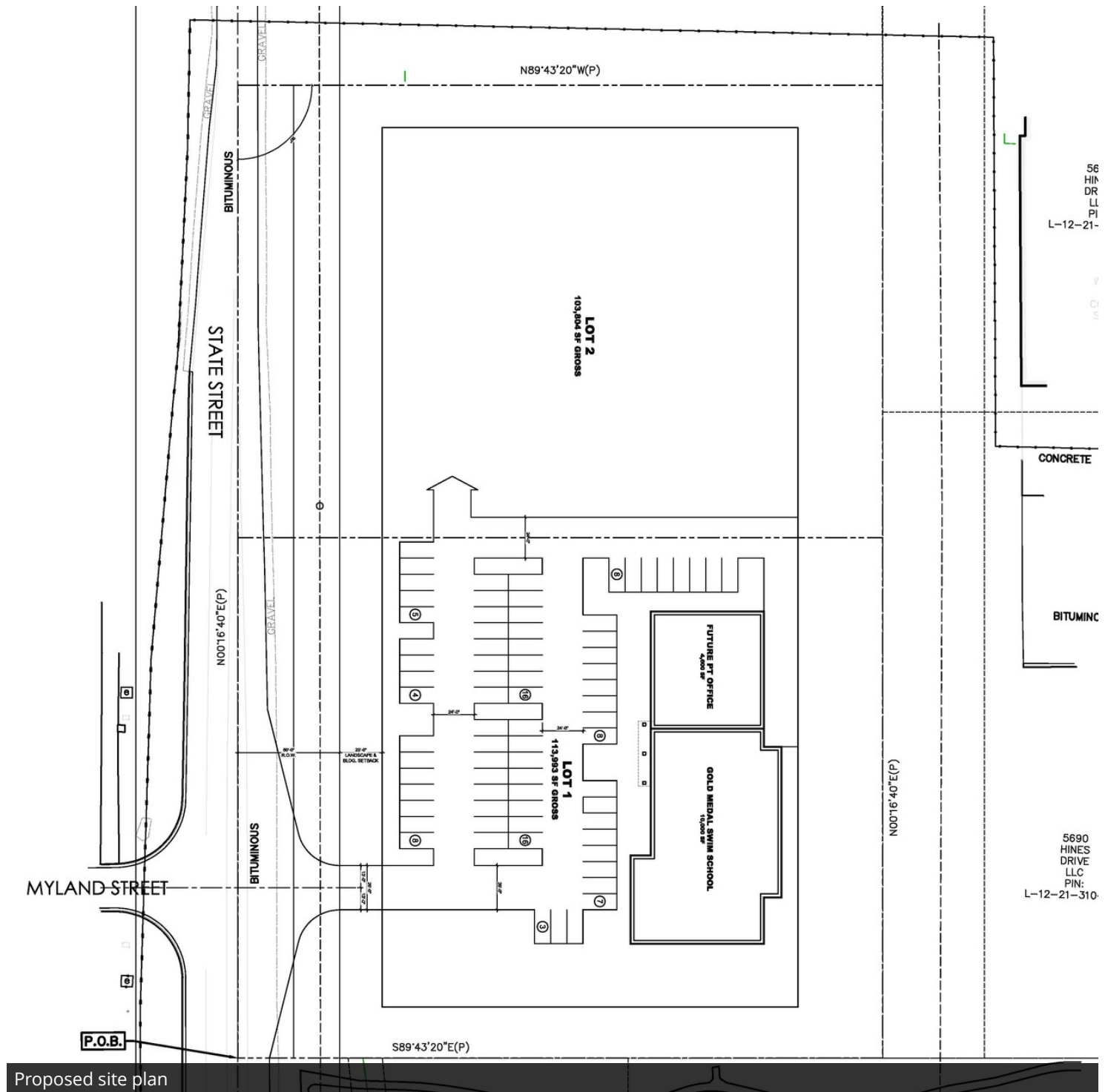
SWISHERCOMMERCIAL.COM

Commercial Vacant Land for Sale

5801 S. STATE ST, ANN ARBOR, MI 48108



Swisher
COMMERCIAL



**Building
relationships.**

208 East Washington Street Ann Arbor, MI 48104

734.663.0501

Charlie Koenn
Bart Wise

734.926.0230
734.358.0354

CKOENN@SWISHERCOMMERCIAL.COM
BARTW@SWISHERCOMMERCIAL.COM

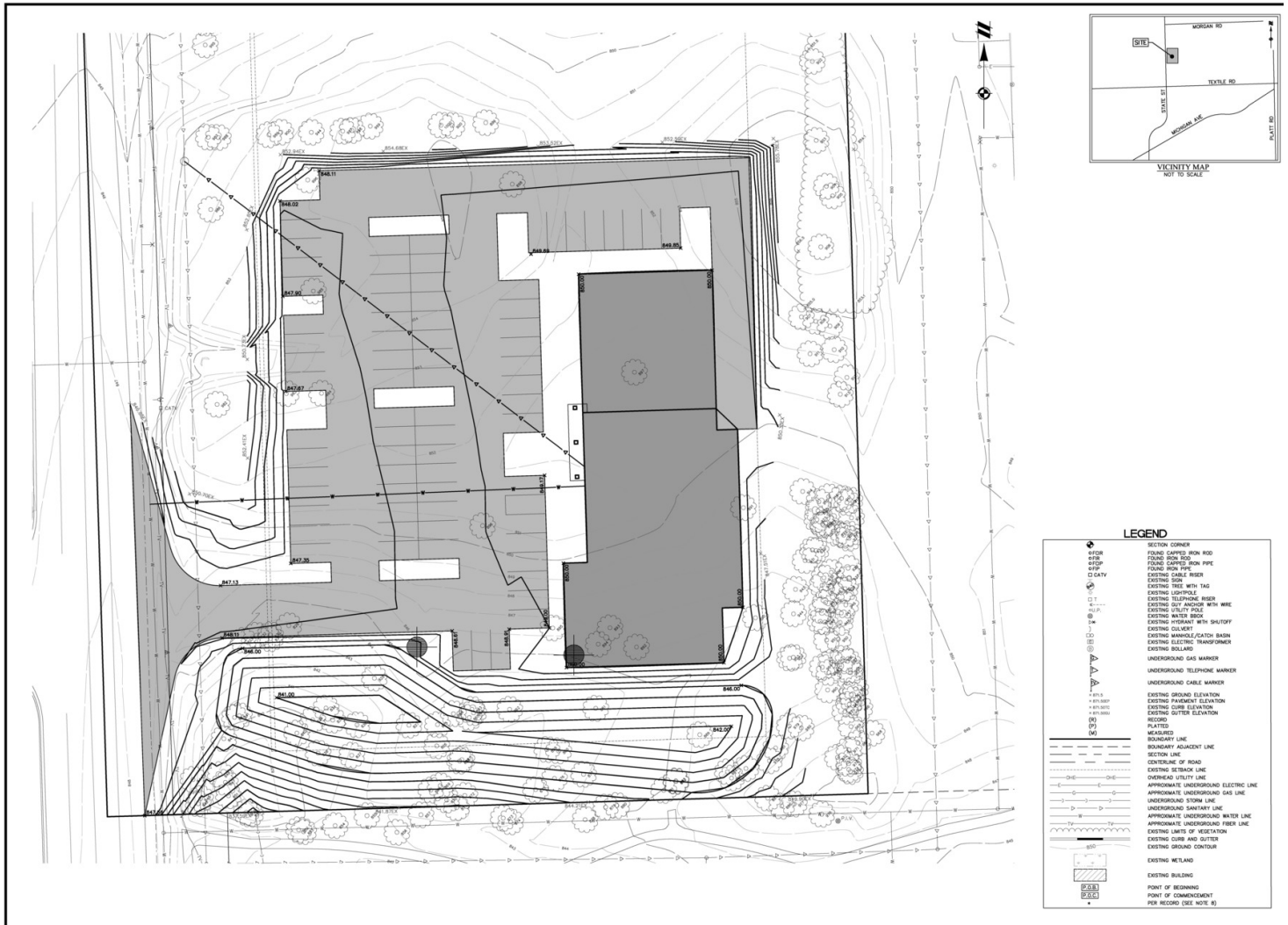
SWISHERCOMMERCIAL.COM

Commercial Vacant Land for Sale

5801 S. STATE ST, ANN ARBOR, MI 48108



Swisher
COMMERCIAL



Proposed site plan

**Building
relationships.**

208 East Washington Street Ann Arbor, MI 48104

734.663.0501

Charlie Koenn
Bart Wise

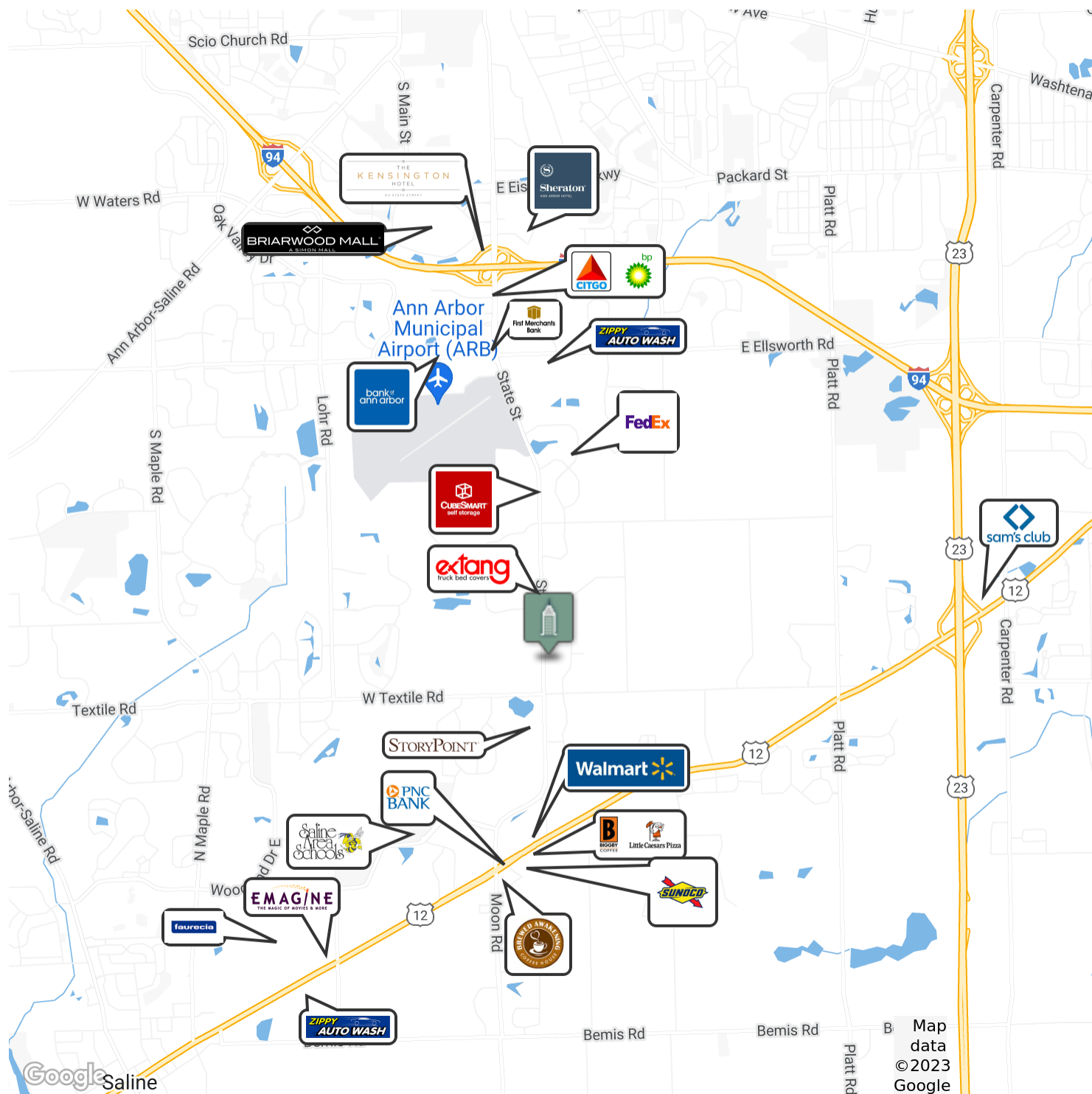
734.926.0230
734.358.0354

CKOENN@SWISHERCOMMERCIAL.COM
BARTW@SWISHERCOMMERCIAL.COM

SWISHERCOMMERCIAL.COM

Commercial Vacant Land for Sale

5801 S STATE , ANN ARBOR, MI 48108



**Building
relationships.**

208 East Washington Street Ann Arbor, MI 48104

734.663.0501

Charlie Koenn
Bart Wise

734.926.0230
734.358.0354

CKOENN@SWISHERCOMMERCIAL.COM
BARTW@SWISHERCOMMERCIAL.COM

SWISHERCOMMERCIAL.COM

Commercial Vacant Land for Sale

5801 S STATE , ANN ARBOR, MI 48108



Swisher
COMMERCIAL



***Building
relationships.***

208 East Washington Street Ann Arbor, MI 48104

734.663.0501

Charlie Koenn

734.926.0230

CKOENN@SWISHERCOMMERCIAL.COM

Bart Wise

734.358.0354

BARTW@SWISHERCOMMERCIAL.COM

SWISHERCOMMERCIAL.COM