

Larson & McGowin

PROPERTIES

Cold Springs

TRACT

217± Acres In Elmore County, Alabama

\$520,800



Approximately 217± acres in Elmore County near Deatsville. The tract has 65± acres of old gravel pits that are now waterfowl habitat offering the potential for waterfowl hunting minutes from Montgomery. The remainder of the tract consist of natural timber adjacent to agricultural land. **Offered at \$520,800.**



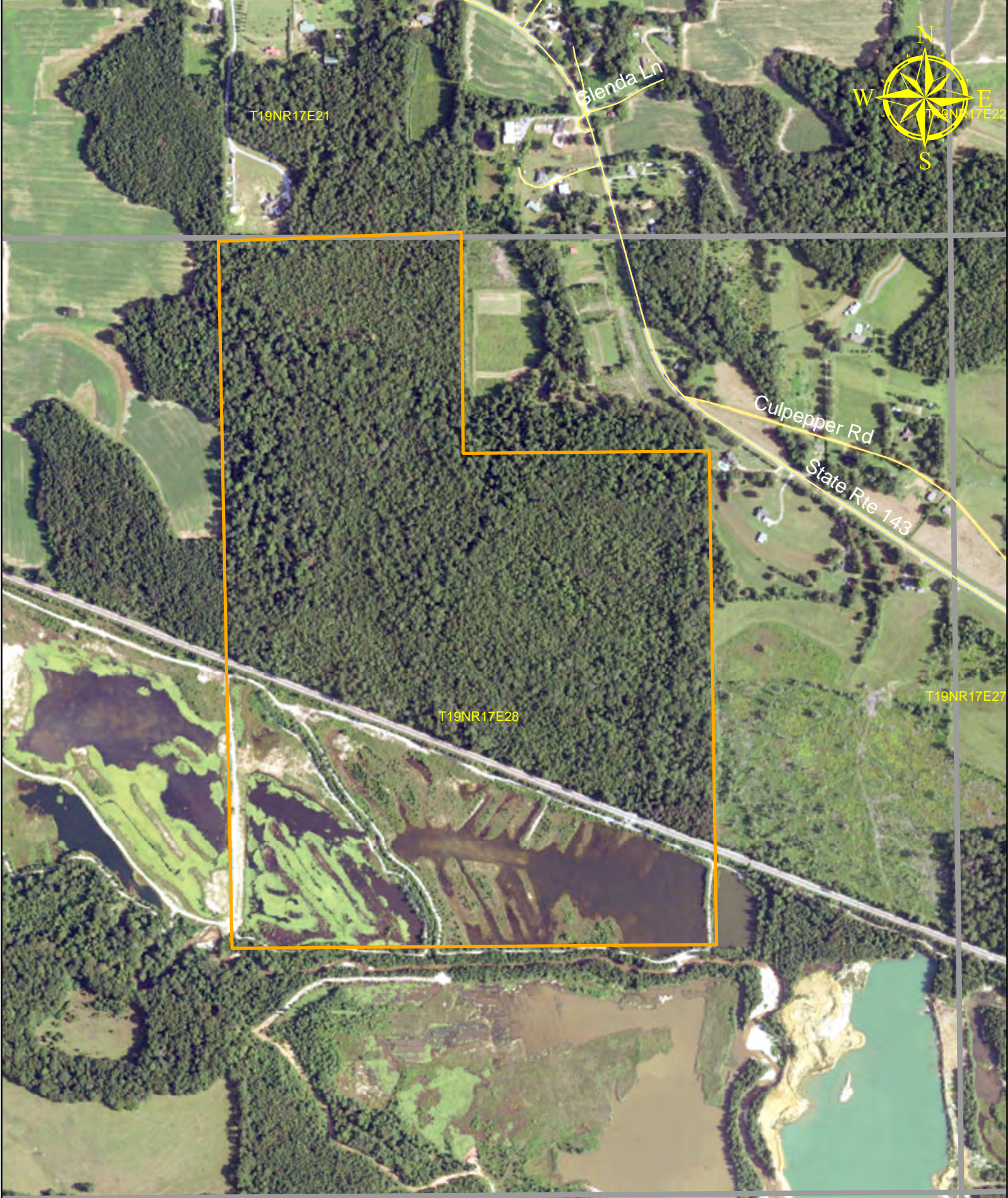
**Chandler
Graham**
Qualifying Broker

cgraham@larsonmcgowin.com

Phone: 205.977.7706 | Mobile: 334.734.1382

www.larsonmcgowinproperties.com

500 Office Park Drive Suite 430 Birmingham, AL 35223 | Branch Offices: Greenville, Alabama | Mobile, Alabama | Merryville, Louisiana
Licensed in AL, MS, TN, LA, TX, AR, GA, KY, FL, & SC



T19NR17E21

Glenda Ln

Culpepper Rd

State Rte 143

T19NR17E28

T19NR17E27

T19NR17E33

USGS The National Map: Orthoimagery. Data refreshed December, 2021.

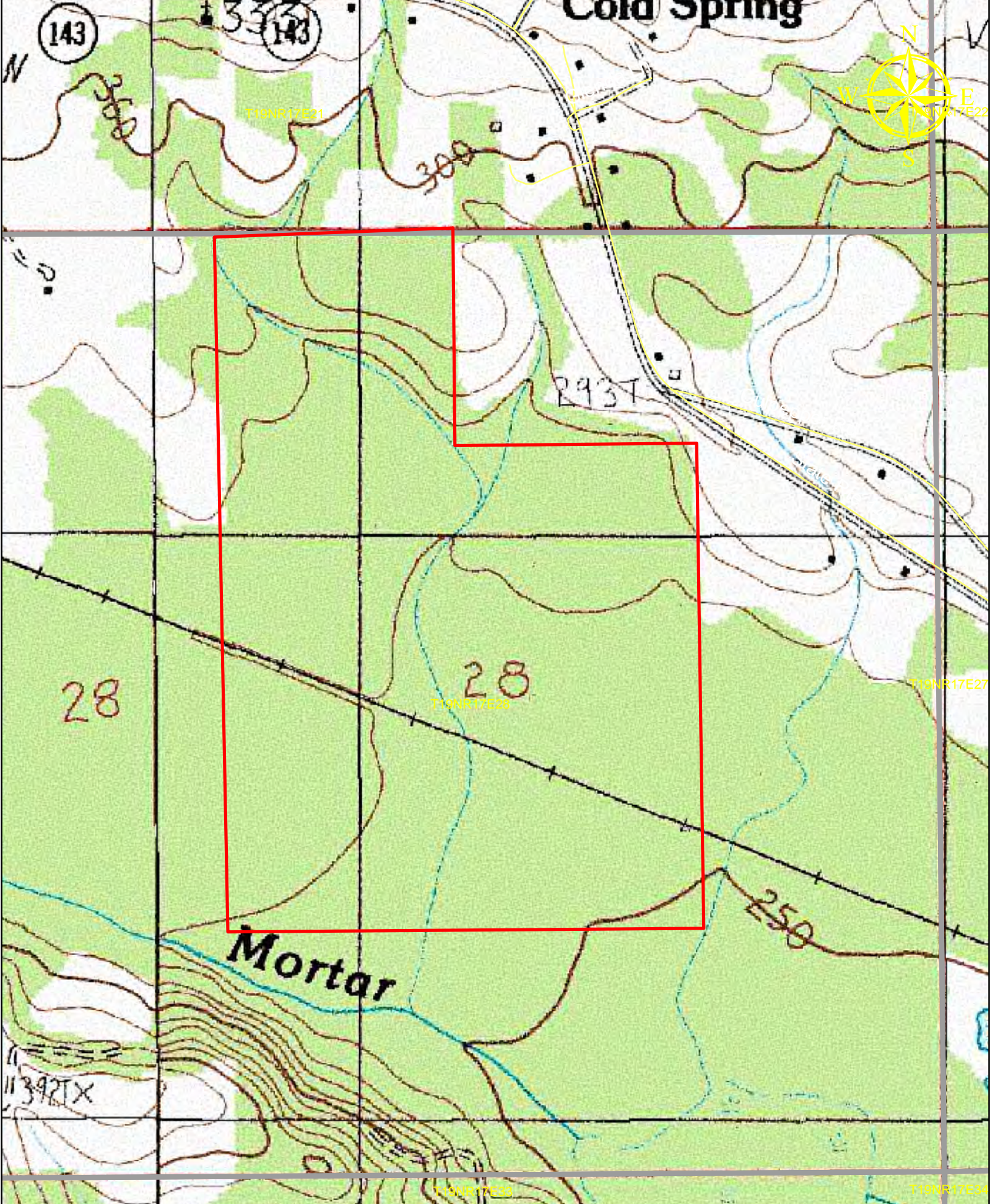
0 330 660 1,320 Feet

Cold Springs Tract
217+- Acres
Elmore County, AL

June 13, 2022



Map is for illustrative purposes only. Accuracy is not guaranteed



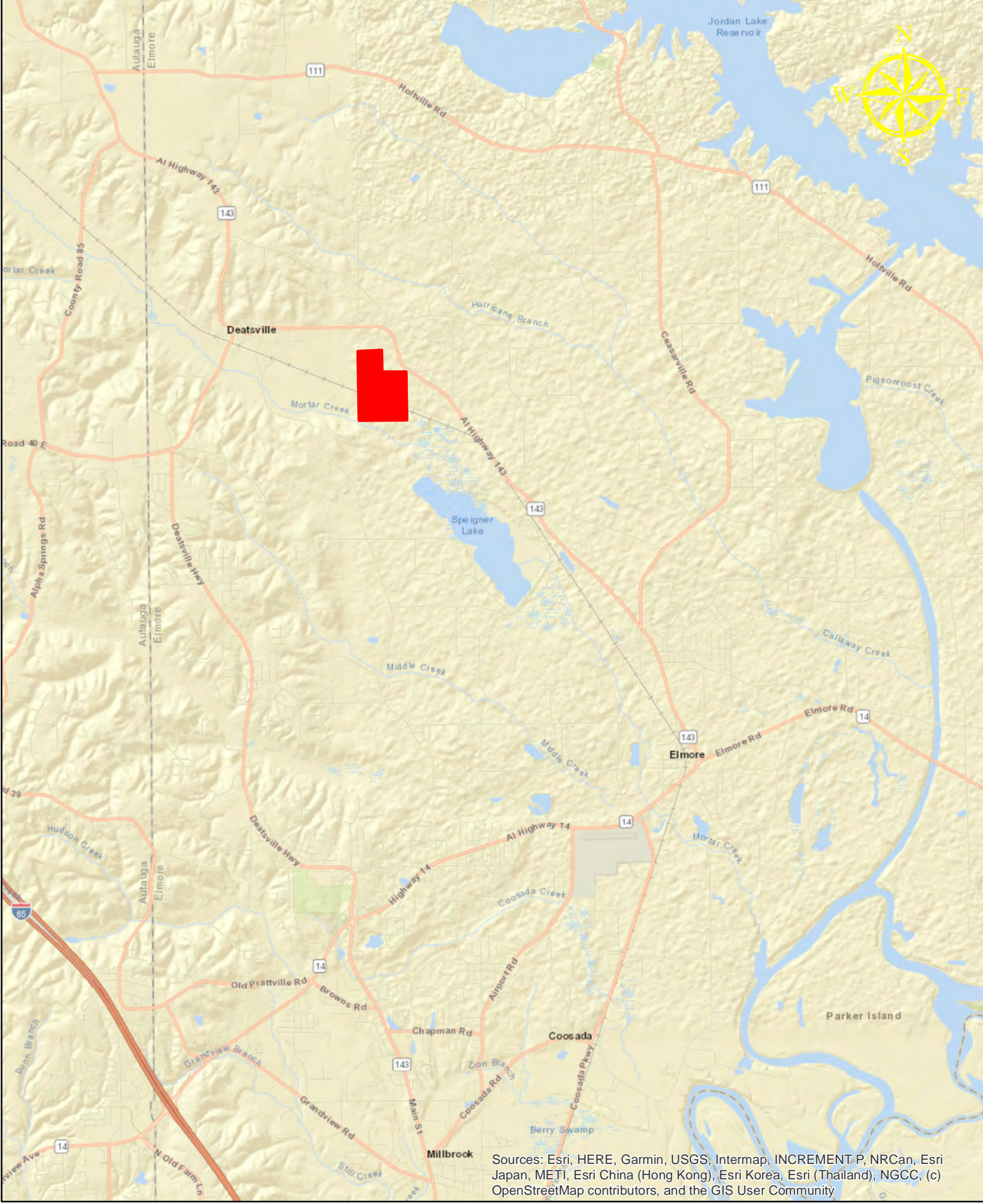
0 330 660 1,320 Feet

Cold Springs Tract
217+ Acres
Elmore County, AL

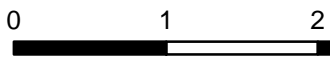
June 13, 2022

Larson & McGowin
PROPERTIES

Map is for illustrative purposes only. Accuracy is not guaranteed



Sources: Esri, HERE, Garmin, USGS, Intermap, INCREMENT P, NRCan, Esri Japan, METI, Esri China (Hong Kong), Esri Korea, Esri (Thailand), NGCC, (c) OpenStreetMap contributors, and the GIS User Community



Cold Springs Tract
217+ Acres
Elmore County, AL

June 13, 2022



Map is for illustrative purposes only. Accuracy is not guaranteed