

Larson & McGowin

PROPERTIES

Cotton Lakes TRACT

121± Acres In Elmore County, Alabama

\$1,537,920

Approximately 121± acres in Elmore County just outside of Wetumpka. This tract is adjacent to the Cotton Lakes Subdivision and could also be developed. Currently the tract is covered in a pine hardwood forest making for a nice, wooded property close to town. Offered at **\$1,537,920**



**Chandler
Graham**
Qualifying Broker

cgraham@larsonmcgowin.com

Phone: 205.977.7706 | Mobile: 334.734.1382

www.larsonmcgowinproperties.com

500 Office Park Drive Suite 430 Birmingham, AL 35223 | Branch Offices: Greenville, Alabama | Mobile, Alabama | Merryville, Louisiana
Licensed in AL, MS, TN, LA, TX, AR, GA, KY, FL, & SC



USGS The National Map: Orthoimagery. Data refreshed December, 2021.

0 330 660 1,320 Feet

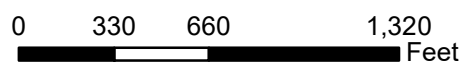
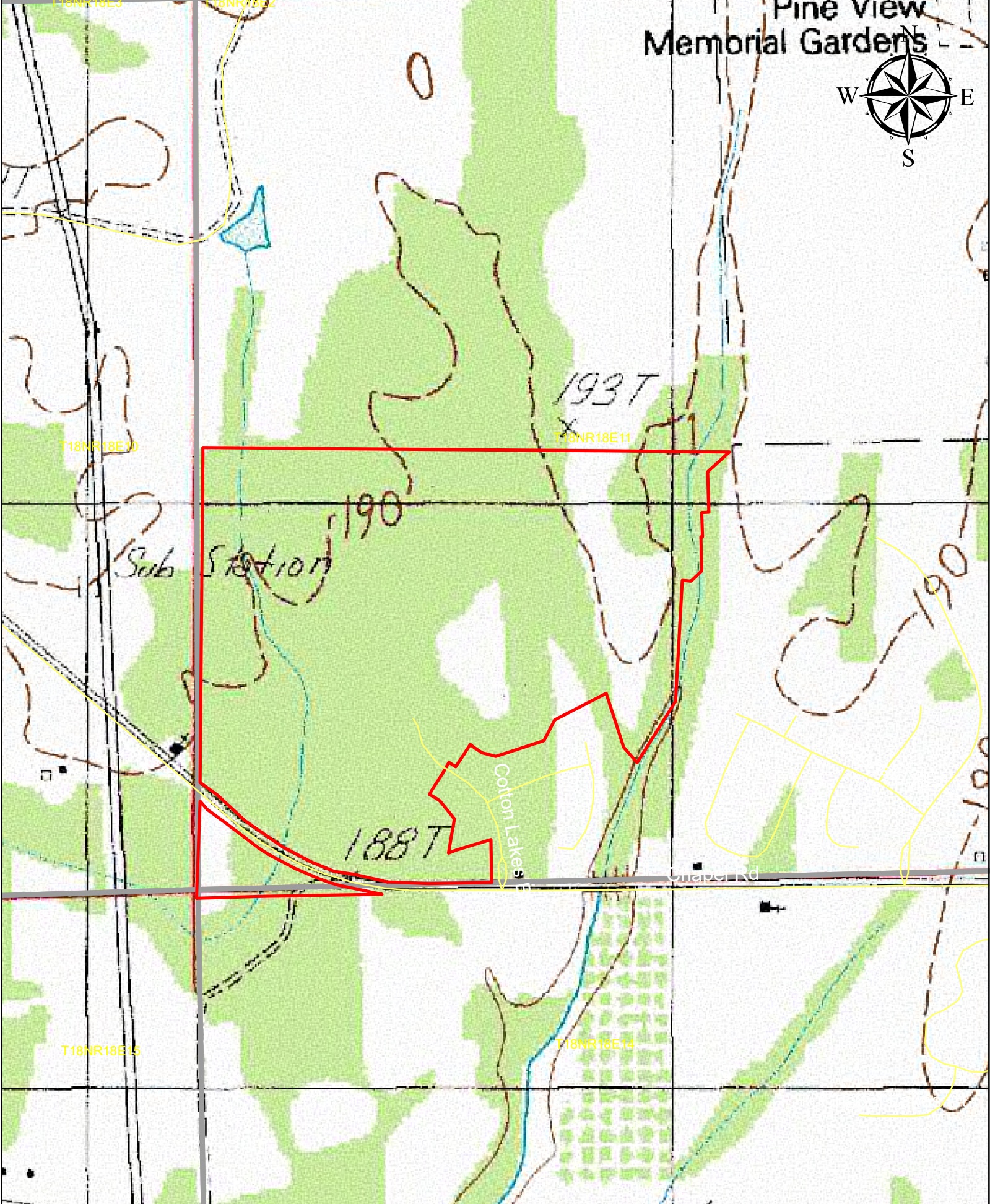
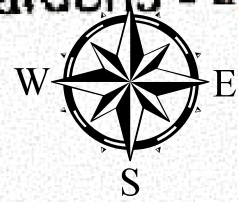
Map is for illustrative purposes only. Accuracy in not guaranteed

Cotton Lakes Tract
121 +- Acres
Elmore County, AL

June 13, 2022

Larson & McGowin
PROPERTIES

Pine View Memorial Gardens

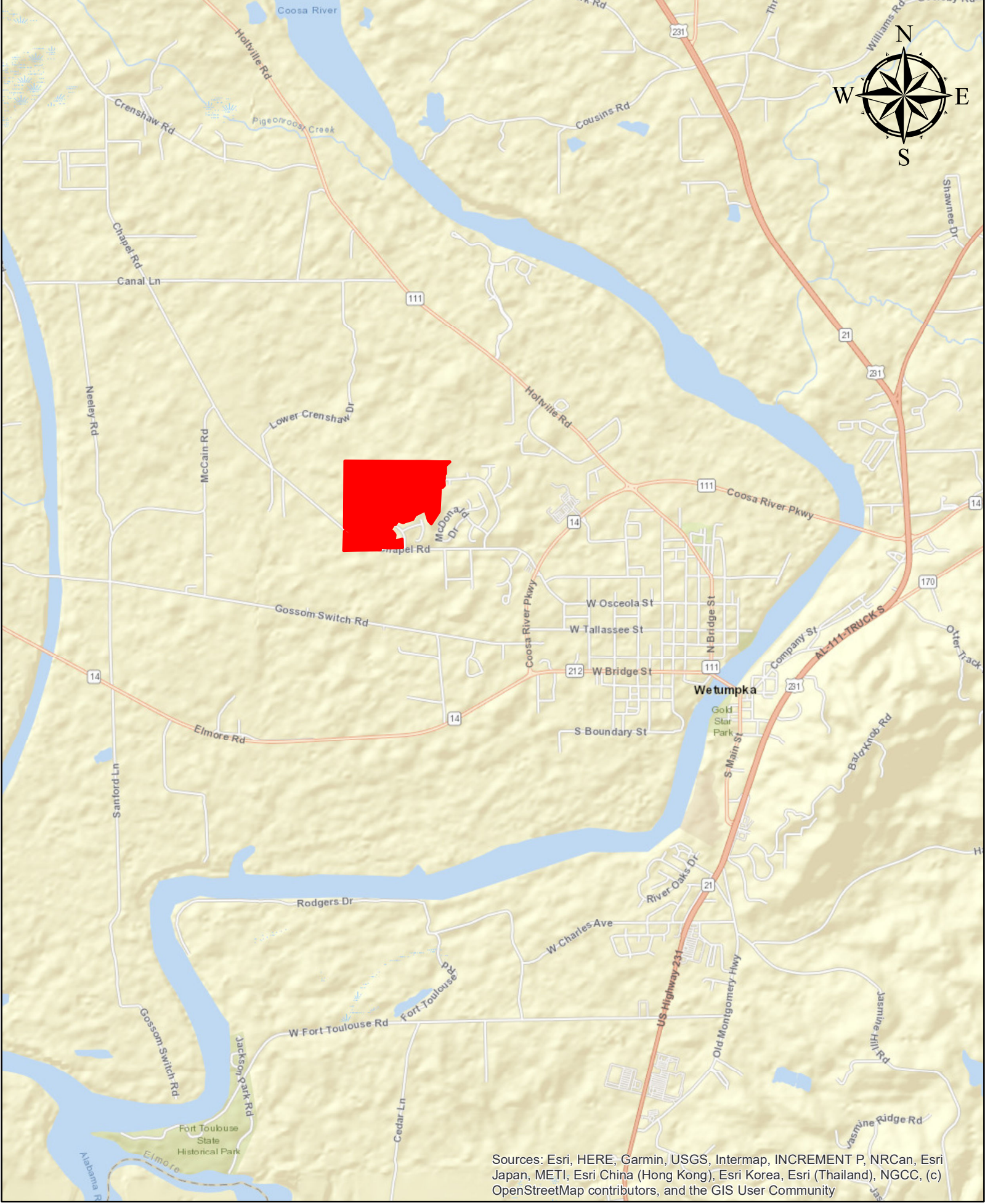


Cotton Lakes Tract
121 +/- Acres
Elmore County, AL

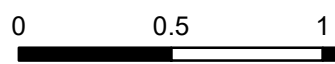
June 13, 2022

Larson & McGowin
PROPERTIES

Map is for illustrative purposes only. Accuracy in not guaranteed



Sources: Esri, HERE, Garmin, USGS, Intermap, INCREMENT P, NRCan, Esri Japan, METI, Esri China (Hong Kong), Esri Korea, Esri (Thailand), NGCC, (c) OpenStreetMap contributors, and the GIS User Community



Cotton Lakes Tract
121 +/- Acres
Elmore County, AL

June 13, 2022

Map is for illustrative purposes only. Accuracy in not guaranteed

