

FARM FOR SALE

94 Acres m/l Palo Alto County Section 19 Highland Township



Outstanding cattle farm along a major highway in NW Iowa
Combination of pasture and cropland

Soils (North Tract): Clarion, Blue Earth, Hawick CSR2 63.5

Soils (South Tract): Blue Earth, Clarion, Biscay, Nicollet CSR2 67.8

Annual RE Taxes: \$ 1650 (est)

Price:

North Tract - \$236,250

35 acres m/l @ \$6750 per acre

South Tract - \$522,150

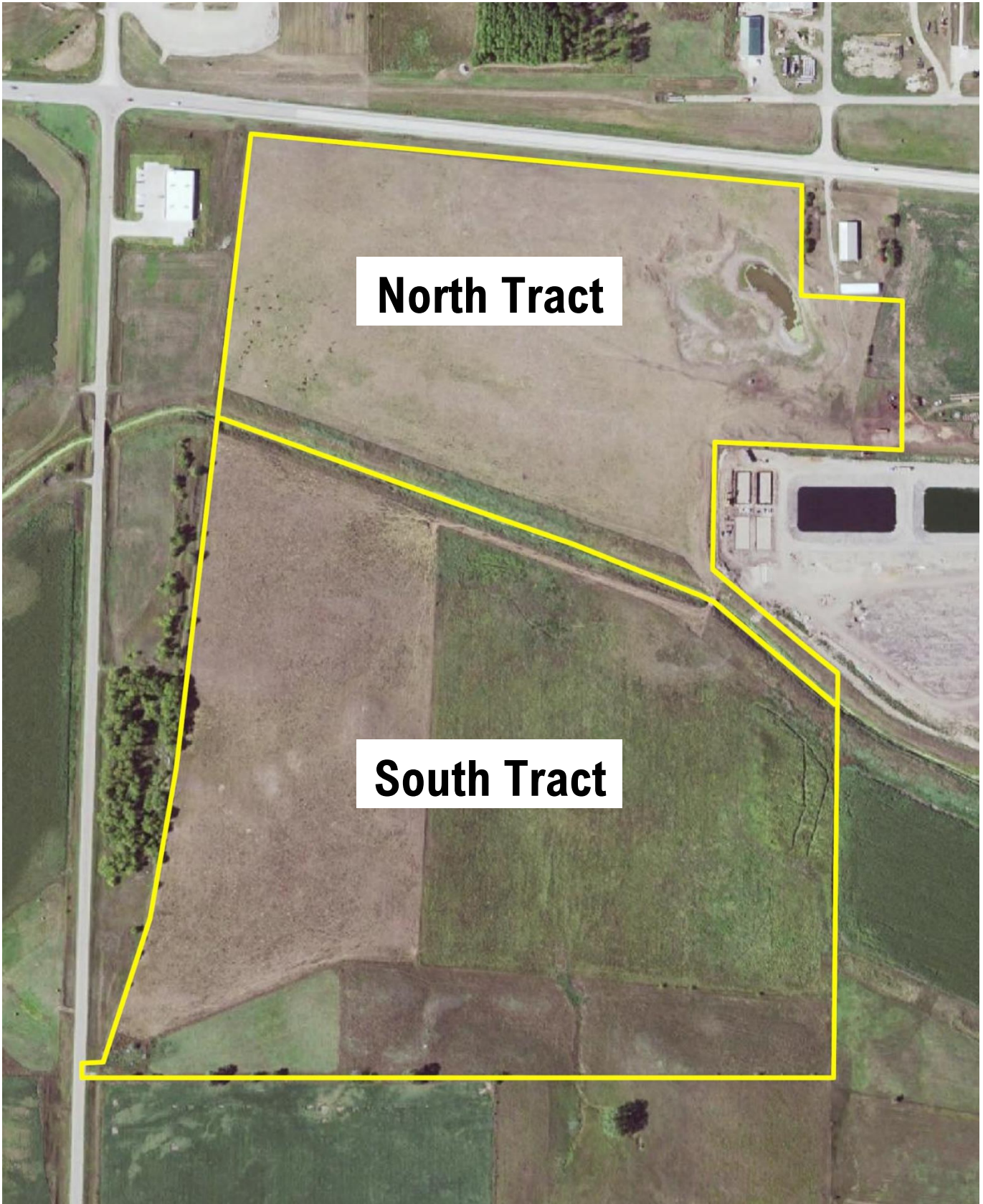
59 acres m/l @ \$8850 per acre

For more information contact Chuck Sikora 712-260-2788

The ACRE Company

712-262-3529 theacresco.com

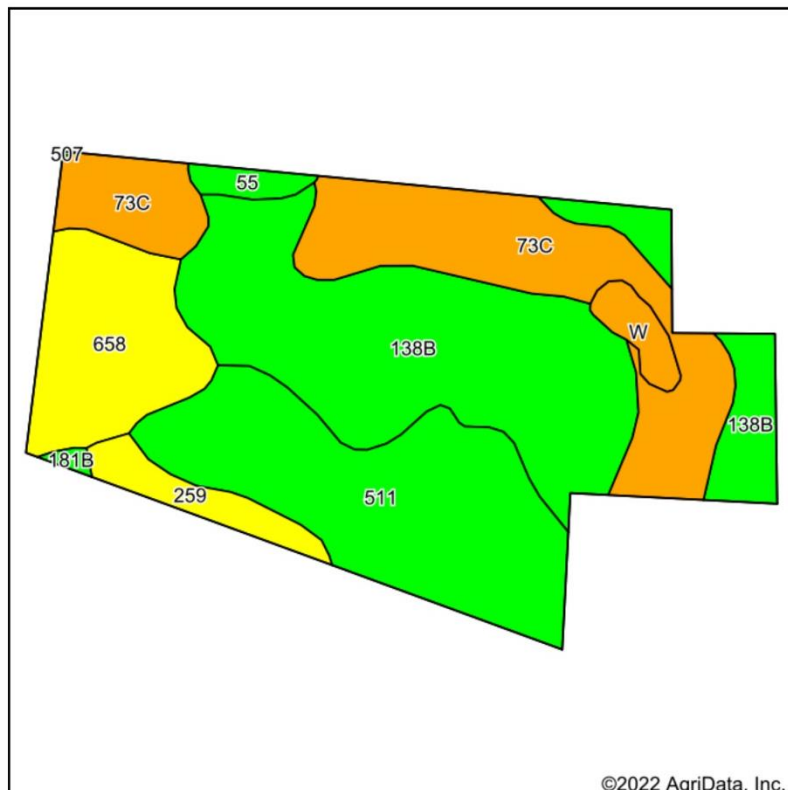
Information contained herein is gathered from sources deemed reliable but cannot be guaranteed by The ACRE Co.



North Tract

South Tract

Soils - North Tract



State: **Iowa**
 County: **Palo Alto**
 Location: **19-96N-34W**
 Township: **Highland**
 Acres: **33.5**
 Date: **5/17/2022**



Soils data provided by USDA and NRCS.

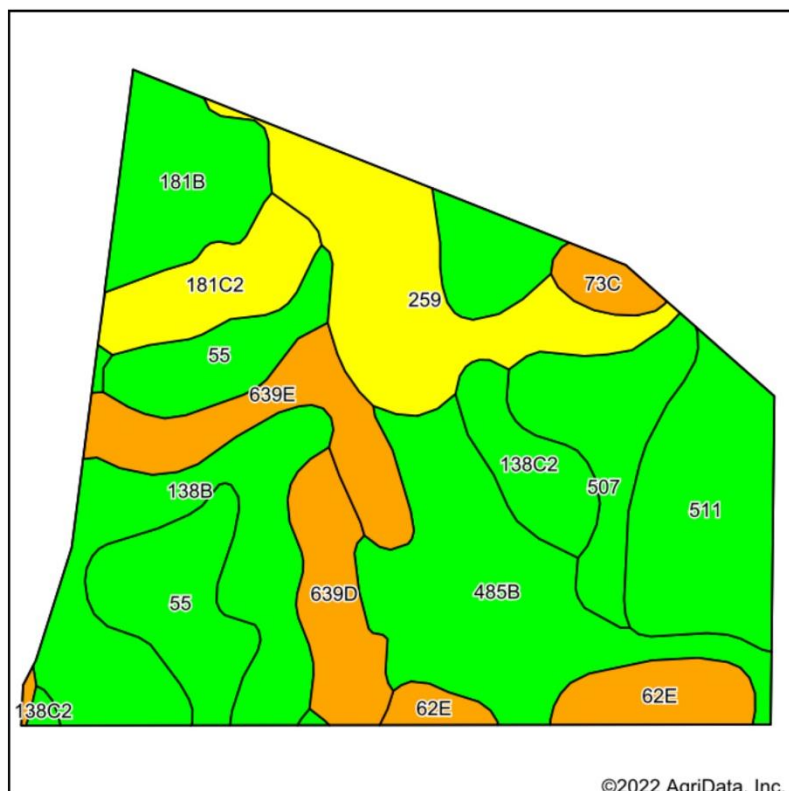
Area Symbol: IA147, Soil Area Version: 28								
Code	Soil Description	Acres	Percent of field	CSR2 Legend	Non-Irr Class *c	CSR2**	CSR	
138B	Clarion loam, 2 to 6 percent slopes	11.82	35.3%		Ile	89	76	
511	Blue Earth mucky silt loam, 0 to 1 percent slopes	7.99	23.9%		Illw	66	56	
73C	Hawick gravelly sandy loam, 6 to 12 percent slopes	7.44	22.2%		IVs	31	5	
658	Mayer loam, 0 to 2 percent slopes	3.93	11.7%		Ilw	54	39	
259	Biscay clay loam, 0 to 2 percent slopes	1.13	3.4%		Ilw	52	70	
W	Water	0.64	1.9%			0	0	
55	Nicollet clay loam, 1 to 3 percent slopes	0.44	1.3%		Iw	89	84	
181B	Clarion-Estherville complex, 2 to 6 percent slopes	0.11	0.3%		Ile	63	53	
Weighted Average						2.63	63.5	49.5

**IA has updated the CSR values for each county to CSR2.

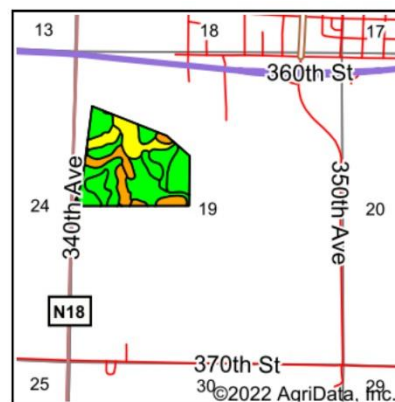
*c: Using Capabilities Class Dominant Condition Aggregation Method

Soils data provided by USDA and NRCS.

Soils - South Tract



Soils data provided by USDA and NRCS.



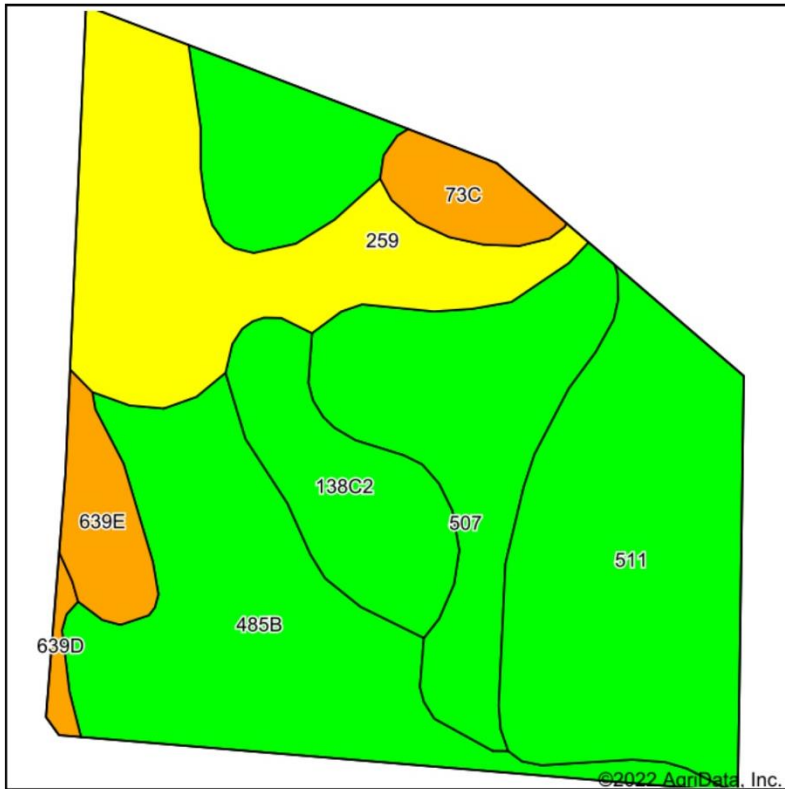
State: **Iowa**
 County: **Palo Alto**
 Location: **19-96N-34W**
 Township: **Highland**
 Acres: **56.85**
 Date: **5/17/2022**



Area Symbol: IA147, Soil Area Version: 28								
Code	Soil Description	Acres	Percent of field	CSR2 Legend	Non-Irr Class *c	CSR2**	CSR	
485B	Spillville loam, 2 to 5 percent slopes	8.24	14.5%		Ile	88	76	
511	Blue Earth mucky silt loam, 0 to 1 percent slopes	7.30	12.8%		Illw	66	56	
138B	Clarion loam, 2 to 6 percent slopes	7.15	12.6%		Ile	89	76	
259	Biscay clay loam, 0 to 2 percent slopes	6.62	11.6%		Ilw	52	70	
55	Nicollet clay loam, 1 to 3 percent slopes	5.85	10.3%		Iw	89	84	
181B	Clarion-Estherville complex, 2 to 6 percent slopes	3.77	6.6%		Ile	63	53	
507	Canisteo clay loam, 0 to 2 percent slopes	3.63	6.4%		Ilw	84	74	
639E	Storden-Salida complex, 14 to 18 percent slopes	3.60	6.3%		IVe	28	16	
639D	Storden-Salida complex, 9 to 14 percent slopes	2.69	4.7%		IIIe	34	20	
181C2	Clarion-Estherville complex, 5 to 9 percent slopes, moderately eroded	2.66	4.7%		IVe	49	38	
62E	Storden loam, 10 to 22 percent slopes, moderately eroded	2.34	4.1%		IVe	32	30	
138C2	Clarion loam, 6 to 10 percent slopes, moderately eroded	2.22	3.9%		IIIe	83	58	
73C	Hawick gravelly sandy loam, 6 to 12 percent slopes	0.78	1.4%		IVs	31	5	
Weighted Average						2.44	67.8	60.1

**IA has updated the CSR values for each county to CSR2.
 *c: Using Capabilities Class Dominant Condition Aggregation Method
 Soils data provided by USDA and NRCS.

Soils - Tillable Acres



State: **Iowa**
 County: **Palo Alto**
 Location: **19-96N-34W**
 Township: **Highland**
 Acres: **24.7**
 Date: **5/17/2022**



Soils data provided by USDA and NRCS.

Area Symbol: IA147, Soil Area Version: 28								
Code	Soil Description	Acres	Percent of field	CSR2 Legend	Non-Irr Class *c	CSR2**	CSR	
511	Blue Earth mucky silt loam, 0 to 1 percent slopes	7.31	29.6%		IIIw	66	56	
485B	Spillville loam, 2 to 5 percent slopes	5.25	21.3%		Ile	88	76	
259	Biscay clay loam, 0 to 2 percent slopes	4.59	18.6%		IIw	52	70	
507	Canisteo clay loam, 0 to 2 percent slopes	3.63	14.7%		IIw	84	74	
138C2	Clarion loam, 6 to 10 percent slopes, moderately eroded	2.09	8.5%		IIIe	83	58	
639E	Storden-Salida complex, 14 to 18 percent slopes	0.89	3.6%		IVe	28	16	
73C	Hawick gravelly sandy loam, 6 to 12 percent slopes	0.76	3.1%		IVs	31	5	
639D	Storden-Salida complex, 9 to 14 percent slopes	0.18	0.7%		IIIe	34	20	
Weighted Average						2.52	69.5	62.4

**IA has updated the CSR values for each county to CSR2.
 *c: Using Capabilities Class Dominant Condition Aggregation Method
 Soils data provided by USDA and NRCS.