

Vacant Residential Land

0 PEARL, PINCKNEY, MI 48169



Swisher
COMMERCIAL

FOR SALE



SUMMARY

Sale Price:	\$175,000
Lot Size:	1.36 Acres
Zoning:	R3 - HIGH DENSITY RESIDENTIAL Village of Pinckney
Tax ID:	14-23-100-022

PROPERTY OVERVIEW

Vacant residential lot located in downtown Pinckney, bordered by the Lakeland Trail recreation area.

212 feet of frontage with 283 feet of depth. Municipal water and sewer available. Pinckney School District.

Future Planned for R-4 Multi-Family Residential.

Close to shops, recreation and schools. Accessible to US-23 via M-36 and I-96 via D-19.

**Building
relationships.**

208 East Washington Street Ann Arbor, MI 48104

734.663.0501

Charlie Koenn

CKOENN@SWISHERCOMMERCIAL.COM

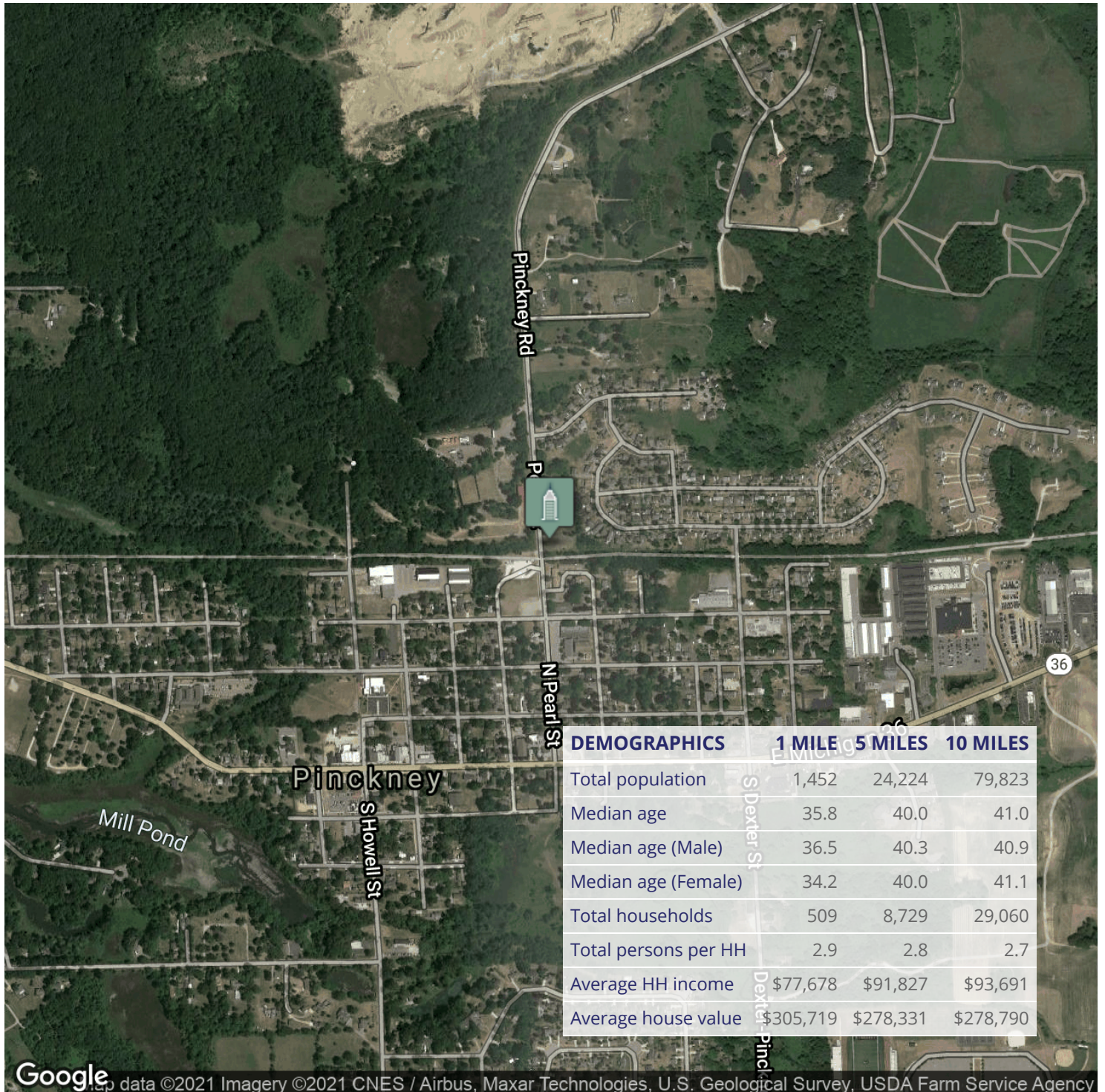
SWISHERCOMMERCIAL.COM

Vacant Residential Land for Sale

0 PEARL, PINCKNEY, MI 48169



Swisher
COMMERCIAL



Google data ©2021 Imagery ©2021 CNES / Airbus, Maxar Technologies, U.S. Geological Survey, USDA Farm Service Agency

**Building
relationships.**

208 East Washington Street Ann Arbor, MI 48104

734.663.0501

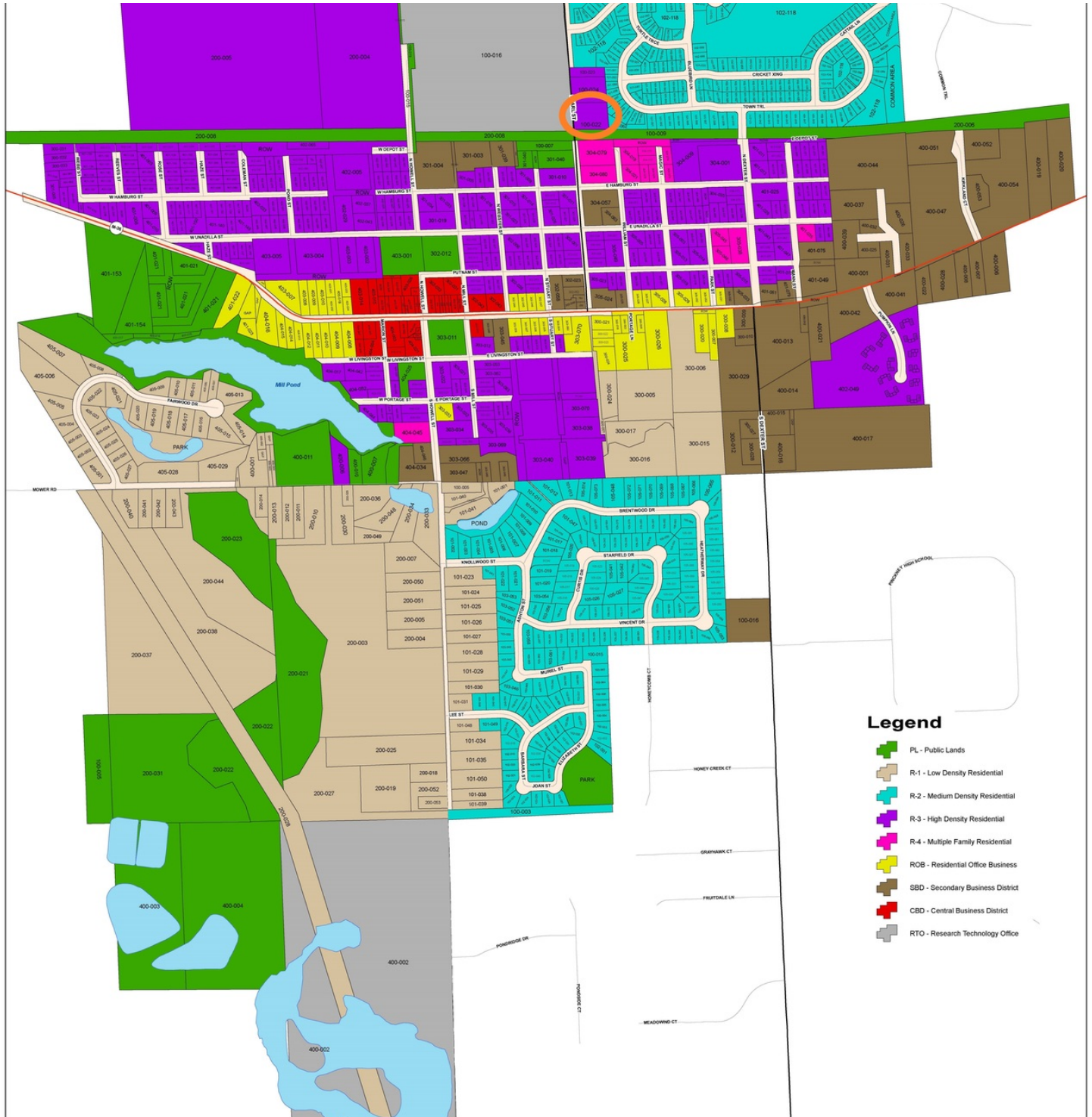
Charlie Koenn

CKOENN@SWISHERCOMMERCIAL.COM

SWISHERCOMMERCIAL.COM

Vacant Residential Land for Sale in Pinckney

0 PEARL, PINCKNEY, MI 48169



Building relationships.

208 East Washington Street Ann Arbor, MI 48104

734.663.0501

Charlie Koenn

CKOENN@SWISHERCOMMERCIAL.COM

SWISHERCOMMERCIAL.COM

Vacant Residential Land for Sale in Pinckney

0 PEARL, PINCKNEY, MI 48169

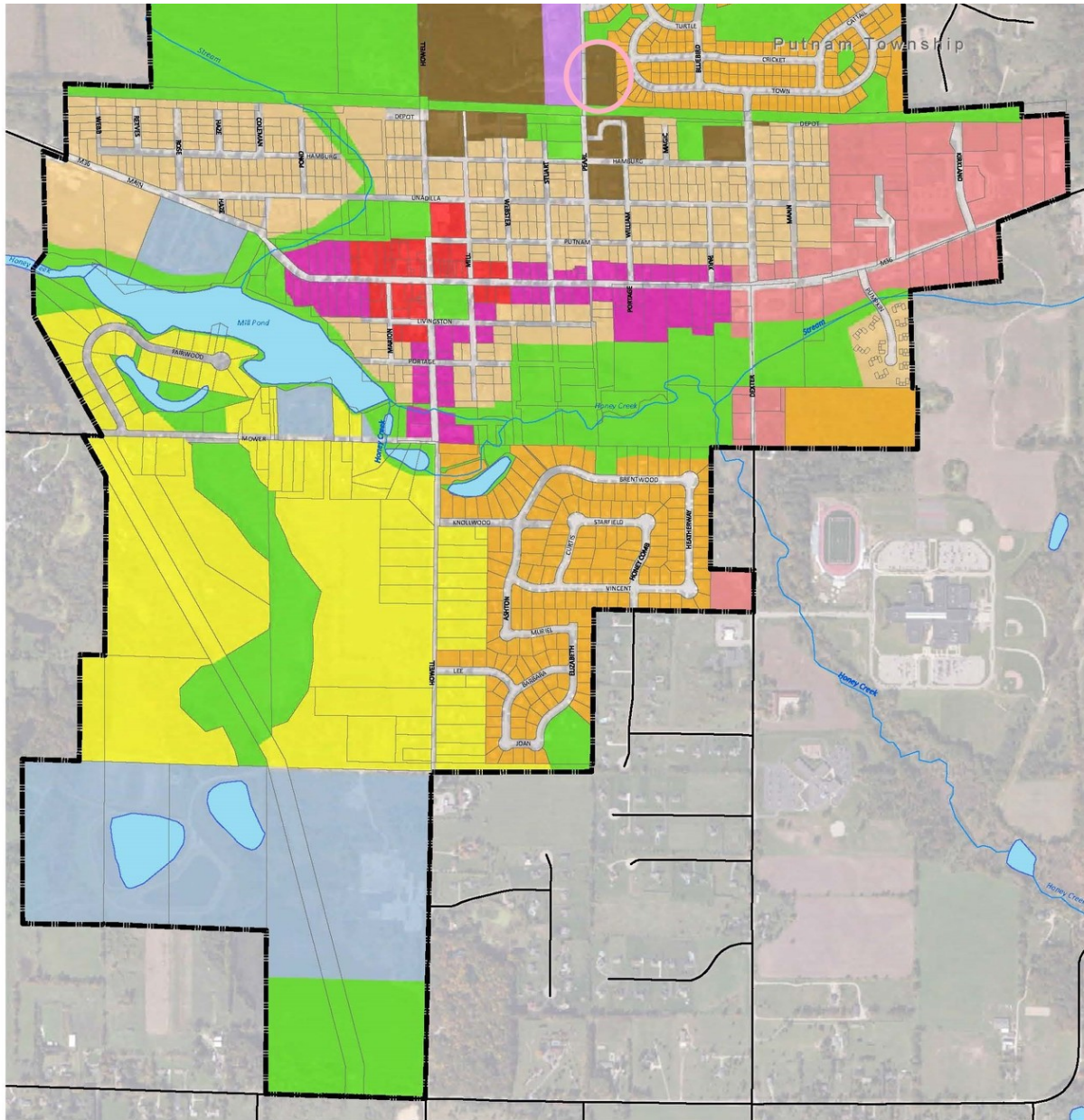


Figure 12

- | | |
|---|---|
| Low Density Residential
21,780 to 43,560 Sq. Ft. Min. Lots | Commercial |
| Medium Density Residential
10,890 to 21,780 Sq. Ft. Min. Lots | Mixed Use |
| High Density Residential
7,260 to 10,890 Sq. Ft. Min. Lots | Public/Semi-Public |
| Multiple Family | Recreation/Conservation |

FUTURE LAND USE Village of Pinckney Livingston County



Building relationships.

208 East Washington Street Ann Arbor, MI 48104

734.663.0501

Charlie Koenn

CKOENN@SWISHERCOMMERCIAL.COM

SWISHERCOMMERCIAL.COM