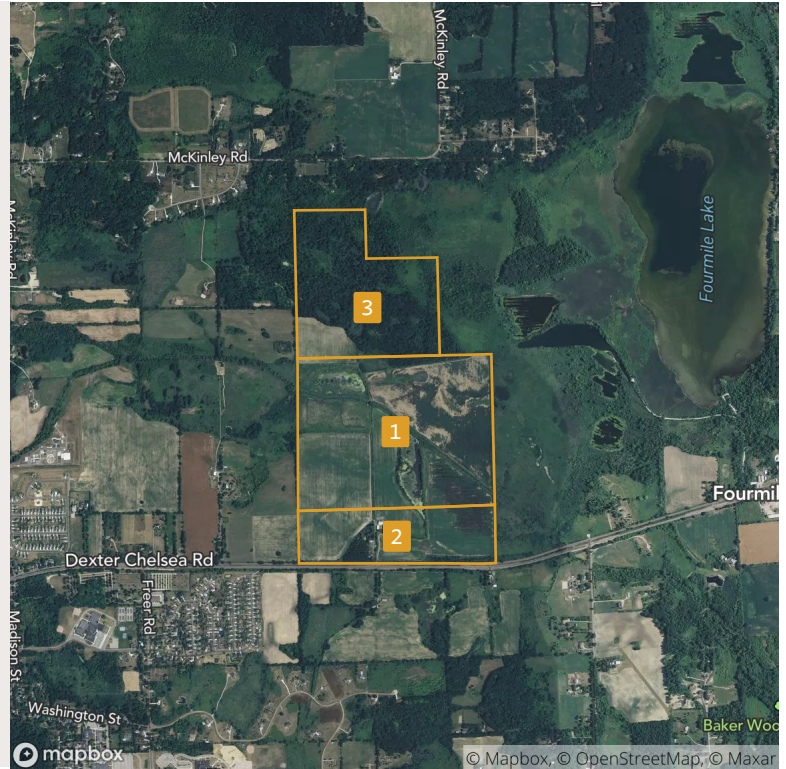


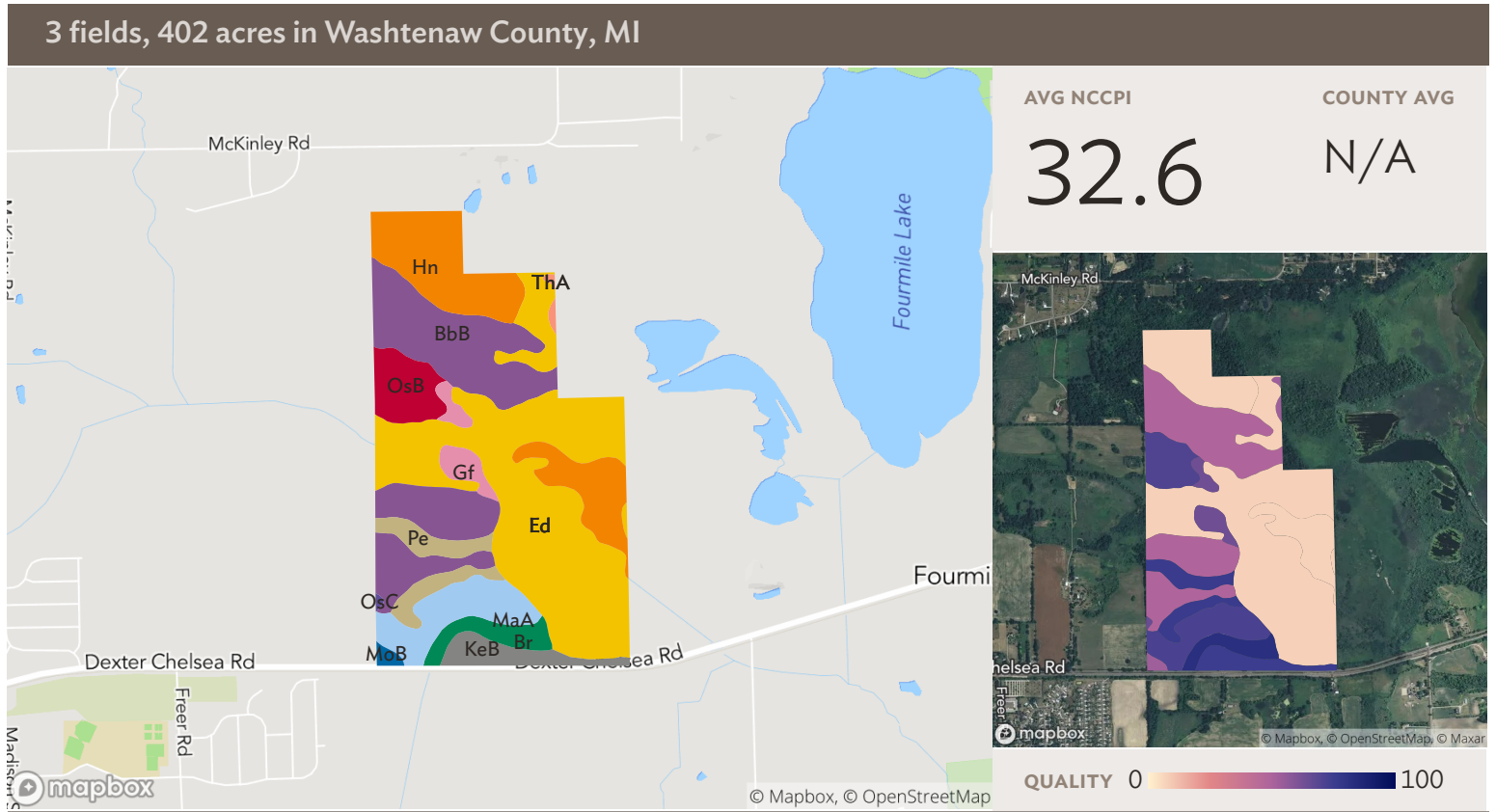
**3 fields, 402 acres in Washtenaw County, MI**
**AVG ACREVALUE**
**N/A**
**COUNTY AVG**
**\$6,957**
**AVG NCCPI**
**32.6**
**COUNTY AVG**
**N/A**

**ECONOMIC ATTRIBUTES**

Washtenaw County is a high tax county.  
This land is in a low livestock demand area.

**PHYSICAL ATTRIBUTES**

Annual Precipitation: 33.59 inches  
Annual GDD: 2591

	<b>FIELD</b>	<b>ACRES</b>	<b>SLOPE</b>	<b>2019 CROPS</b>	<b>AVG NCCPI</b>	<b>AVG ACREVALUE (\$/AC)</b>
1		205.42	1.26%	43% Fallow, 29% Corn, 13% Non-Cropland, 9% Other, 6% Grass/Pasture, 0% Soybeans	25.4	\$5,375
2		75.47	1.93%	50% Corn, 26% Fallow, 8% Other, 8% Forest, 6% Non-Cropland, 2% Soybeans	53.1	\$6,732
3		121.04	2.36%	50% Forest, 38% Non-Cropland, 6% Corn, 6% Other, 0% Soybeans	32.1	N/A
		<b>401.92</b>	<b>1.71%</b>		<b>32.6</b>	<b>N/A</b>



Source: NRCS Soil Survey

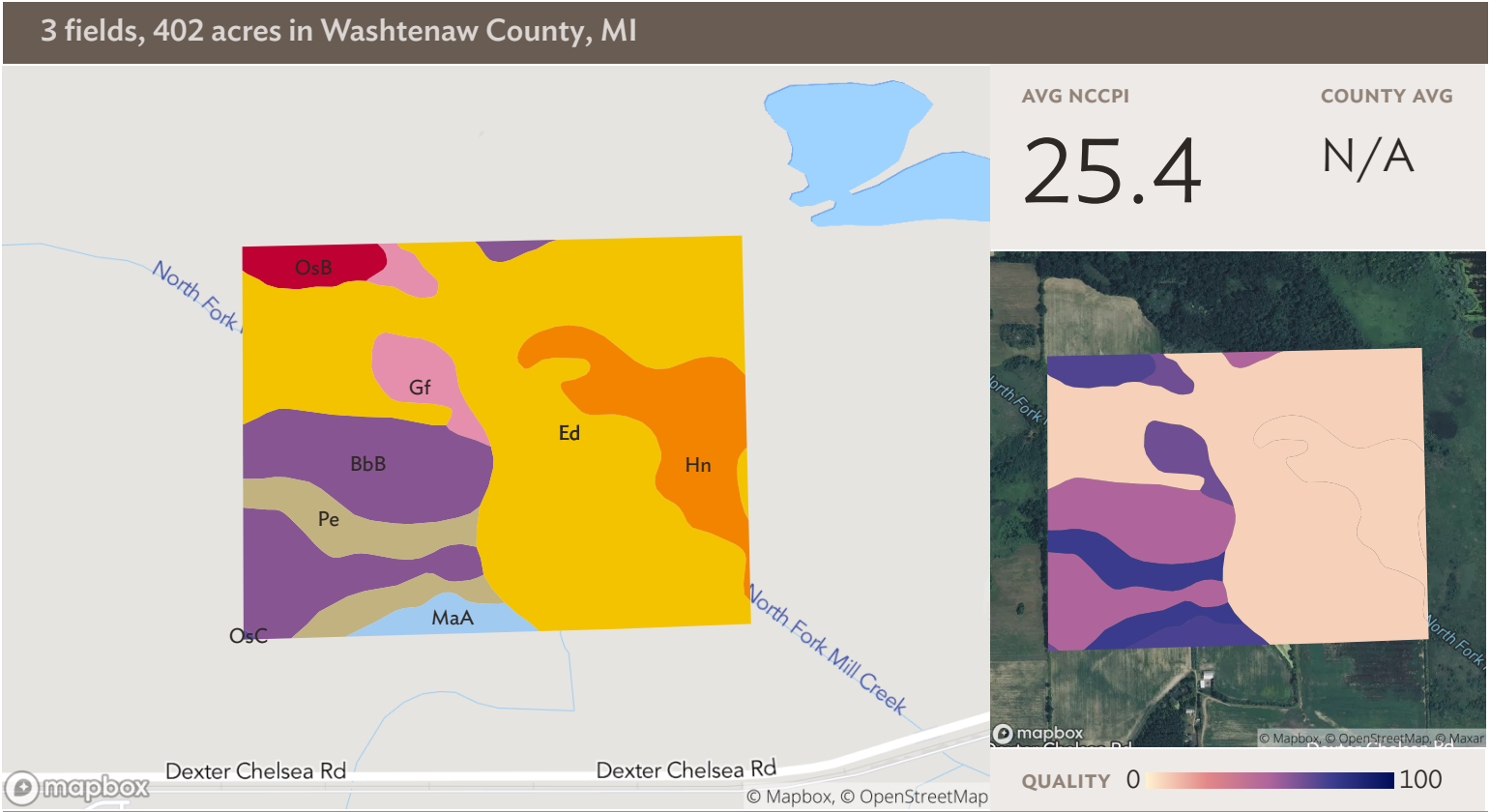
## All fields

402 ac

SOIL CODE	SOIL DESCRIPTION	ACRES	PERCENTAGE OF FIELD	SOIL CLASS	NCCPI
Ed	Edwards muck	148.90	37.0%	5	7.5
BbB	Blount loam, 2 to 6 percent slopes	90.65	22.6%	2	48.9
Hn	Houghton muck, disintegration moraine, 0 to 2 percent slopes	64.24	16.0%	5	7.1
MaA	Macomb loam, 0 to 4 percent slopes	26.72	6.6%	2	71.7
OsB	Oshtemo loamy sand, 0 to 6 percent slopes	17.76	4.4%	3	70.4
Pe	Pewamo clay loam, 0 to 2 percent slopes	17.37	4.3%	2	75.7
KeB	Kendallville loam, 2 to 6 percent slopes	12.38	3.1%	2	75.0
Br	Brookston loam	11.20	2.8%	2	82.1
Gf	Gilford sandy loam, till plain, 0 to 2 percent slopes	9.66	2.4%	3	63.7

**3 fields, 402 acres in Washtenaw County, MI**

■	MoB	Glynwood loam, 2 to 6 percent slopes	1.55	0.4%	2	53.0
■	ThA	Thetford loamy sand, 0 to 4 percent slopes	1.03	0.3%	3	52.9
■	OsC	Oshtemo loamy sand, 6 to 12 percent slopes	0.47	0.1%	3	65.0
						<b>401.92</b>
						<b>32.6</b>

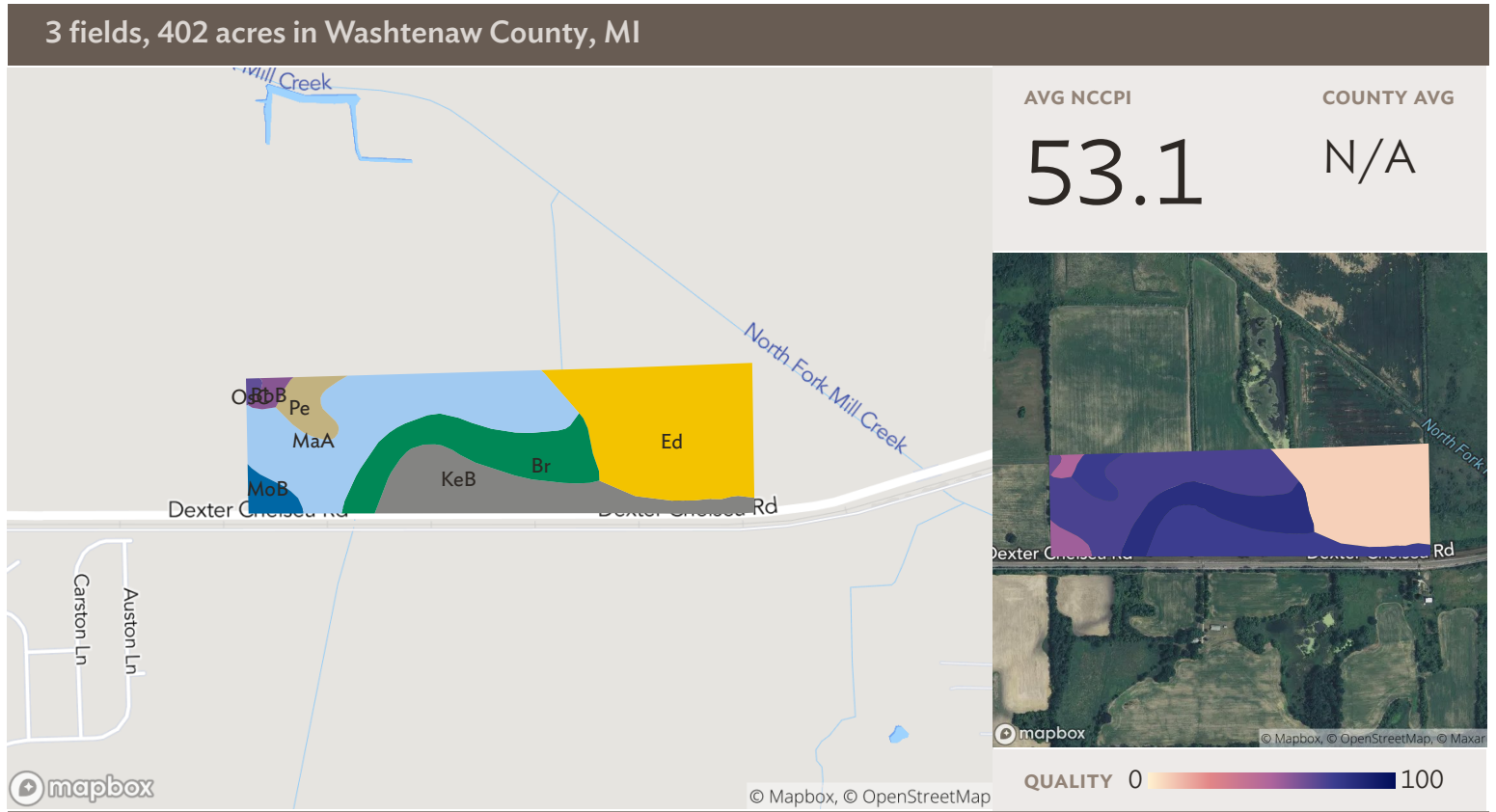


Source: NRCS Soil Survey

## Field 1

205 ac

SOIL CODE	SOIL DESCRIPTION	ACRES	PERCENTAGE OF FIELD	SOIL CLASS	NCCPI
Ed	Edwards muck	111.71	54.4%	5	7.5
BbB	Blount loam, 2 to 6 percent slopes	37.85	18.4%	2	48.9
Hn	Houghton muck, disintegration moraine, 0 to 2 percent slopes	22.41	10.9%	5	7.1
Pe	Pewamo clay loam, 0 to 2 percent slopes	14.46	7.0%	2	75.7
Gf	Gilford sandy loam, till plain, 0 to 2 percent slopes	8.64	4.2%	3	63.7
OsB	Oshtemo loamy sand, 0 to 6 percent slopes	6.03	2.9%	3	70.4
MaA	Macomb loam, 0 to 4 percent slopes	4.24	2.1%	2	71.7
OsC	Oshtemo loamy sand, 6 to 12 percent slopes	0.08	0.0%	3	65.0
<b>205.42</b>					<b>25.4</b>

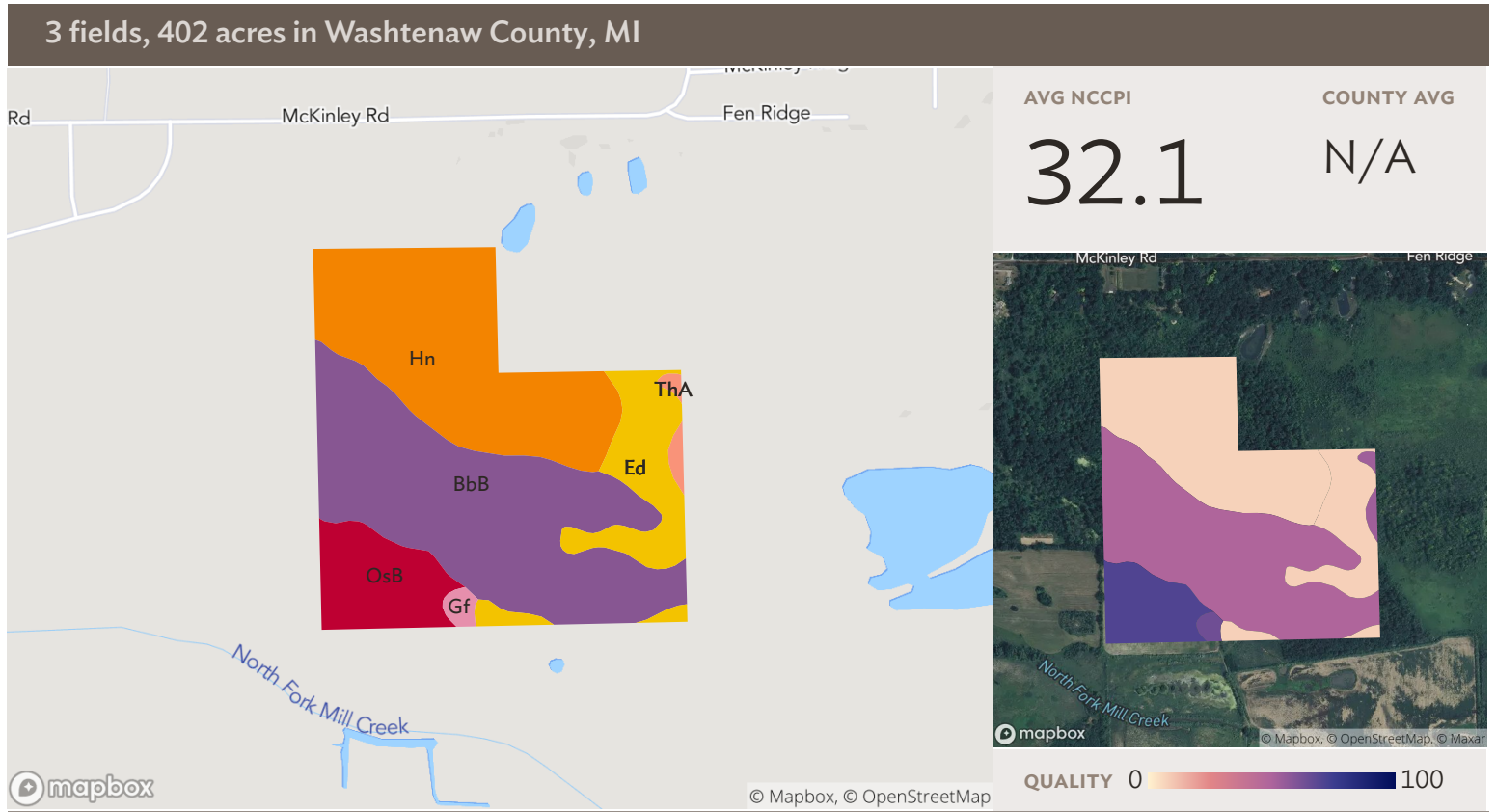


## Field 2

75 ac

Source: NRCS Soil Survey

SOIL CODE	SOIL DESCRIPTION	ACRES	PERCENTAGE OF FIELD	SOIL CLASS	NCCPI
Ed	Edwards muck	23.64	31.3%	5	7.5
MaA	Macomb loam, 0 to 4 percent slopes	22.48	29.8%	2	71.7
KeB	Kendallville loam, 2 to 6 percent slopes	12.38	16.4%	2	75.0
Br	Brookston loam	11.20	14.8%	2	82.1
Pe	Pewamo clay loam, 0 to 2 percent slopes	2.90	3.8%	2	75.7
MoB	Glynwood loam, 2 to 6 percent slopes	1.55	2.0%	2	53.0
BbB	Blount loam, 2 to 6 percent slopes	0.92	1.2%	2	48.9
OsC	Oshtemo loamy sand, 6 to 12 percent slopes	0.40	0.5%	3	65.0
					<b>75.47</b>
					<b>53.1</b>



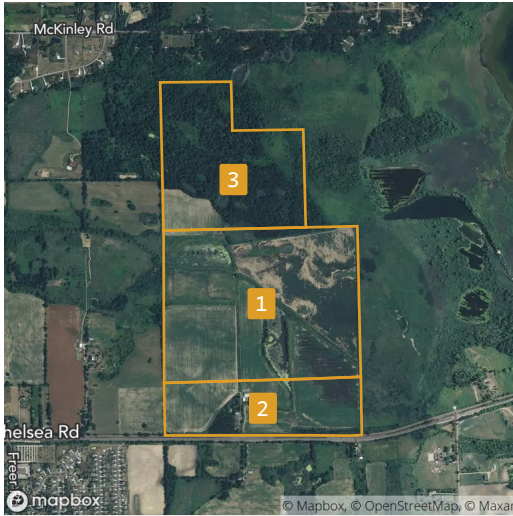
### Field 3

Source: NRCS Soil Survey

121 ac

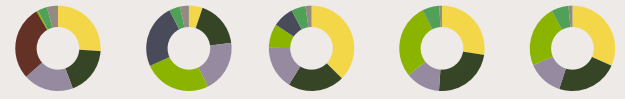
SOIL CODE	SOIL DESCRIPTION	ACRES	PERCENTAGE OF FIELD	SOIL CLASS	NCCPI
BbB	Blount loam, 2 to 6 percent slopes	51.88	42.9%	2	48.9
Hn	Houghton muck, disintegration moraine, 0 to 2 percent slopes	41.83	34.6%	5	7.1
Ed	Edwards muck	13.54	11.2%	5	7.5
OsB	Oshtemo loamy sand, 0 to 6 percent slopes	11.73	9.7%	3	70.4
ThA	Thetford loamy sand, 0 to 4 percent slopes	1.03	0.9%	3	52.9
Gf	Gilford sandy loam, till plain, 0 to 2 percent slopes	1.02	0.8%	3	63.7
<b>121.04</b>					<b>32.1</b>

3 fields, 402 acres in Washtenaw County, MI

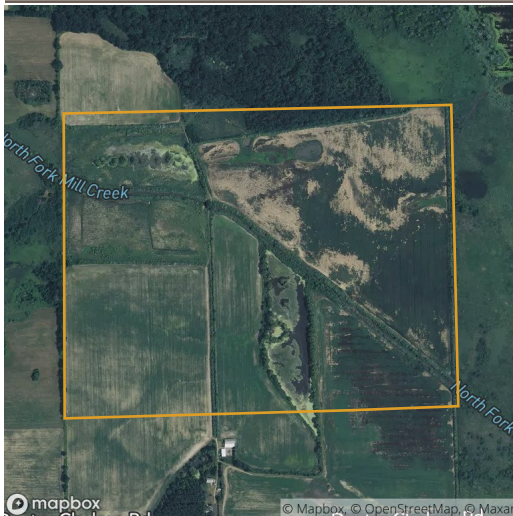


**All fields**

402 ac



	2019	2018	2017	2016	2015
Corn	26.0%	5.2%	37.4%	27.5%	31.7%
Forest	18.3%	17.7%	21.4%	23.6%	23.3%
Non-Cropland	19.0%	19.8%	16.4%	13.1%	13.6%
Fallow	28.2%	-	-	-	-
Soybeans	0.6%	25.6%	9.1%	28.3%	23.3%
Crop Undetermined	-	24.2%	8.0%	0.1%	0.1%
Grass/Pasture	3.6%	4.2%	5.4%	6.3%	6.5%
Other	4.2%	3.4%	2.3%	1.0%	1.5%



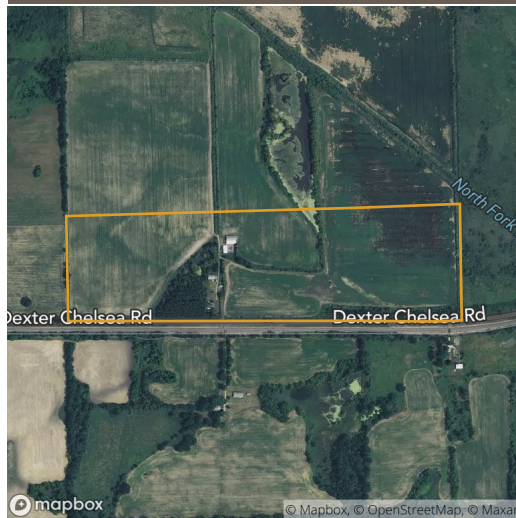
**Field 1**

205 ac



	2019	2018	2017	2016	2015
Corn	29.2%	8.7%	48.2%	40.9%	36.5%
Fallow	43.0%	-	-	-	-
Non-Cropland	12.8%	12.2%	12.2%	10.9%	12.0%
Soybeans	0.1%	28.1%	13.6%	31.6%	33.8%
Crop Undetermined	-	36.4%	7.7%	-	0.1%
Grass/Pasture	5.9%	6.2%	9.1%	11.4%	10.6%
Other	9.0%	8.4%	9.2%	5.1%	7.0%

3 fields, 402 acres in Washtenaw County, MI



### Field 2

75 ac



	2019	2018	2017	2016	2015
Corn	49.5%	4.0%	53.6%	35.0%	53.4%
Soybeans	2.4%	45.4%	10.1%	49.7%	32.0%
Fallow	26.2%	-	-	-	-
Crop Undetermined	-	28.1%	21.7%	0.7%	-
Forest	7.7%	6.7%	6.4%	7.9%	4.5%
Non-Cropland	5.8%	6.4%	4.7%	3.7%	5.0%
Other	8.4%	9.4%	3.5%	3.0%	5.1%



### Field 3

121 ac



	2019	2018	2017	2016	2015
Forest	50.2%	47.5%	58.9%	67.9%	67.6%
Non-Cropland	37.9%	40.8%	30.7%	22.6%	21.8%
Corn	6.0%	-	9.0%	-	9.9%
Soybeans	0.4%	9.0%	1.0%	9.2%	-
Other	5.6%	2.6%	0.5%	0.2%	0.8%

Source: NASS Cropland Data Layer



3 fields, 402 acres in Washtenaw County, MI

# Washtenaw County, MI

FIELD	ACRES	LOCATION	OWNER (LAST UPDATED)
1 	205.42	APN: G 0705300002	MERKEL INVESTMENT COMPANY LLC (01/03/2020)
2 	75.47	APN: G 0708200005	MERKEL, ANN (01/03/2020)
3 	121.04	APN: G 0705200011	MERKEL INVESTMENT COMPANY LLC (01/03/2020)
<b>401.92</b>			

