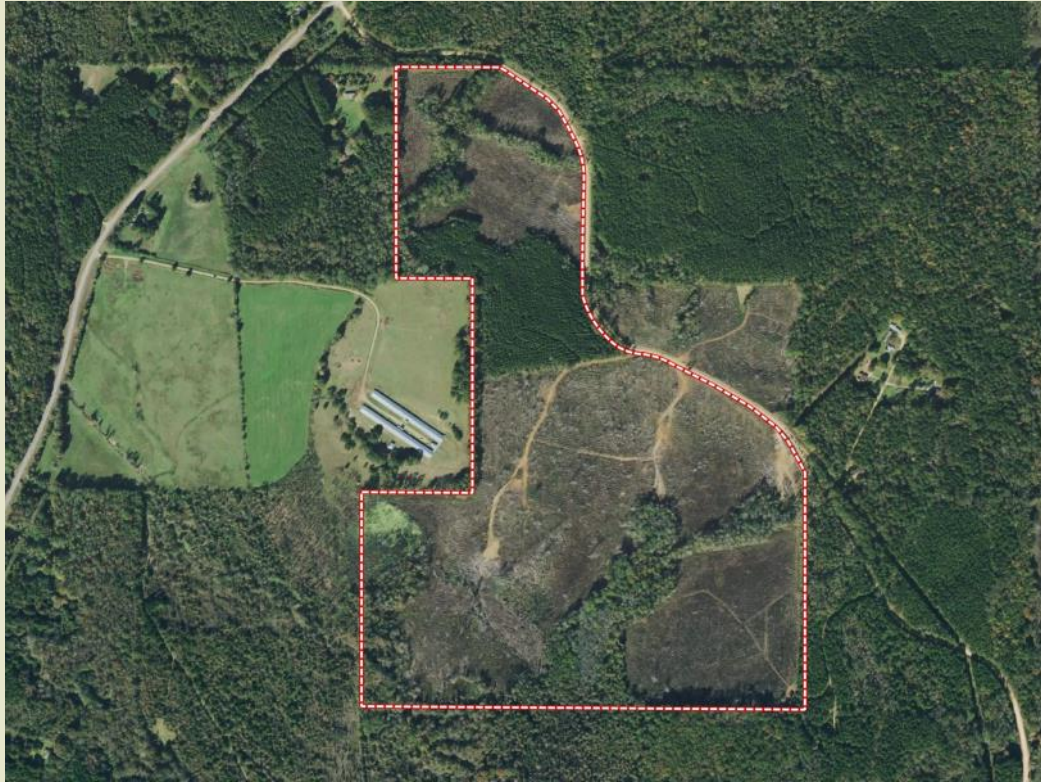




Sartain's Heritage
Properties, LLC.
www.SartainsHeritage.com

Pinishook Creek Winston County, MS 151 +/- Acres



CONTACT:
J. PARKER SARTAIN
601.506.2398
psartain@sartainsheritage.com

Sartain's Heritage Properties
106 First Choice Drive
Madison, MS 39110
Phone: 601-856-2720
Fax: 601-853-6765
www.SartainsHeritage.com

Pinishook Creek
151 +/- acres fronting 1500 +/- feet along the south side of Elijah Graham Road in Winston County. The property consists of 103 acres of 3 year old replanted pines, 16 acres of 14 year pine plantation and 31 acres of hardwood Stream-side Management zones including frontage on Pinishook Creek. Water and electricity are available along the road frontage with several ridgetop site locations for construction of a Camp or Lodge. This is a great recreational property located 13 miles south of Louisville, 13 miles north of Philadelphia and 40 miles south of Starkville. Winston County is known for excellent deer and turkey hunting.

\$256,708.00 / \$1700.00 per acre

Contact: J. Parker Sartain 601.506.2398



All information contained herein is supplied by sources deemed reliable, but is not guaranteed by Sartain's Heritage Properties, its Brokers or Agents. Properties are subject to errors, omissions, correction, price change, prior sale or withdrawal without notice.