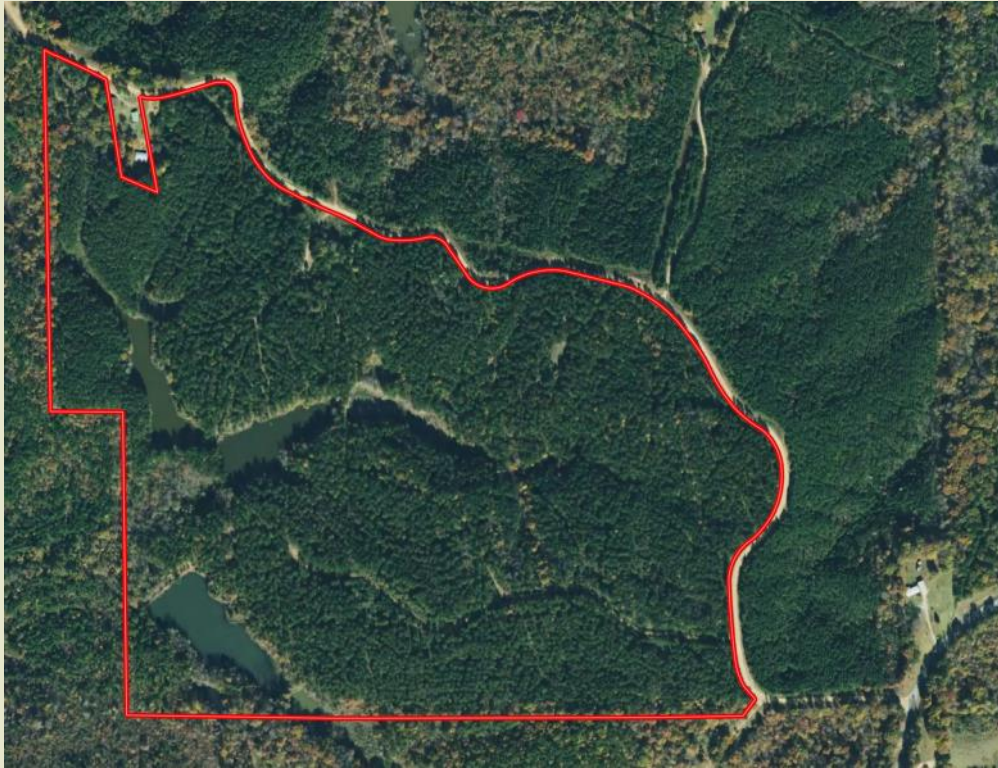




Sartain's Heritage
Properties, LLC.
www.SartainsHeritage.com

Johnny Main South Calhoun County, MS 144.37+/- Acres



CONTACT:
J. PARKER SARTAIN
601.506.2398
psartain@sartainsheritage.com

Sartain's Heritage Properties
106 First Choice Drive
Madison, MS 39110
Phone: 601-856-2720
Fax: 601-853-6765
www.SartainsHeritage.com

144.37 acres located in the hills overlooking the Skuna River basin in Calhoun County, MS. Situated in S24, T12S, R1W and S19, T12S, R1E, the tract has frontage on County Road 141, a gravel public road. Utilities are available for constructing a Hunting Lodge. The timber consists of predominately 27 and 28 year pines. A short six mile drive from Bruce will take you the west side of the property or seven miles to the east side off Rocky Mt. Road. The ridgetop interior road system allows easy access about the property for hunting and fishing in several lakes and ponds on the property. Grenada Lake is 24 miles west of the property offering even more fishing opportunities. Magnolia Records, the official record white-tailed deer record keeping for the State of Mississippi, lists several trophy bucks harvested in Calhoun County.

\$285,121.00 / \$1975.00 per acre

Contact: J. Parker Sartain 601.506.2398



All information contained herein is supplied by sources deemed reliable, but is not guaranteed by Sartain's Heritage Properties, its Brokers or Agents. Properties are subject to errors, omissions, correction, price change, prior sale or withdrawal without notice.