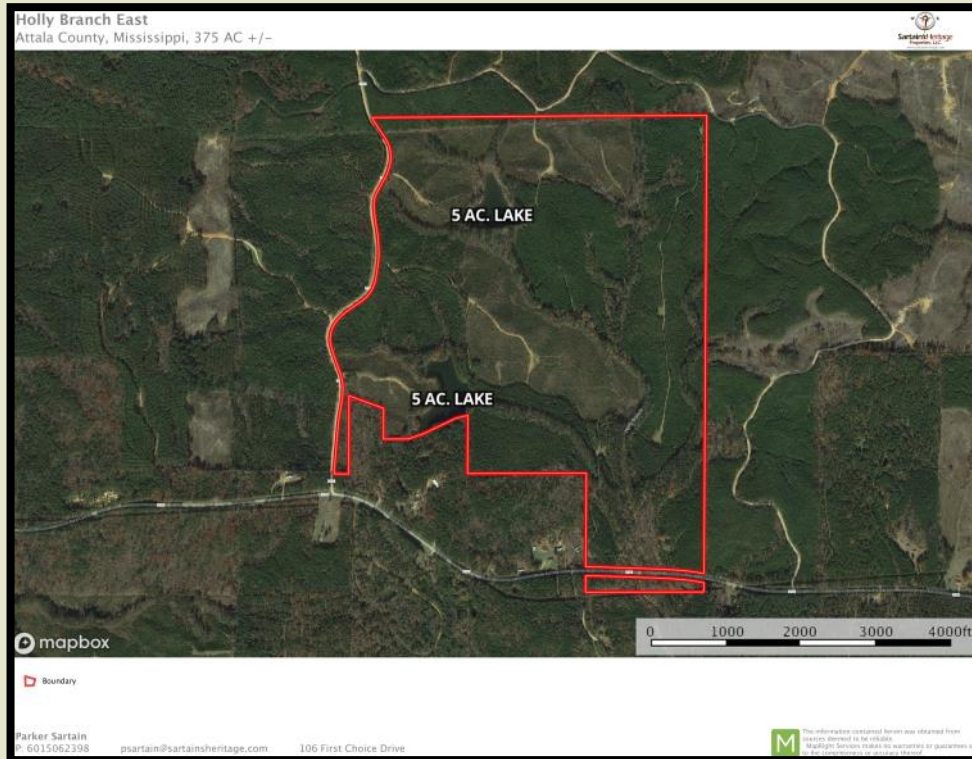




Sartain's Heritage
Properties, LLC.
www.SartainsHeritage.com

HOLLY BRANCH EAST

375.37 acres +/-
Attala County, MS

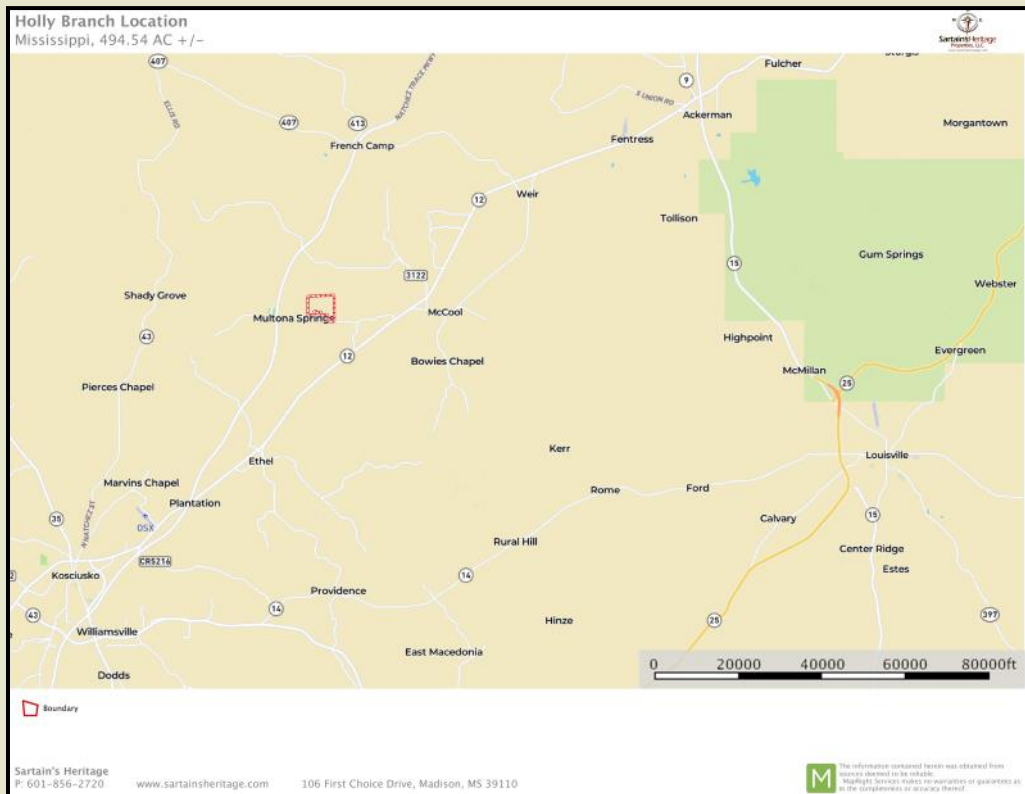


CONTACT:
J. PARKER SARTAIN
601.506.2398
psartain@sartainsheritage.com

Sartain's Heritage Properties
106 First Choice Drive
Madison, MS 39110
Phone: 601-856-2720
Fax: 601-853-6765
www.SartainsHeritage.com

375.37 acres in Sections 31 and 36, Township 16 North, Range 8 East, Attala County, MS., located 1 mile east of the Natchez Trace on County Road 2120 and County Road 2121. The timber consists of well managed pine plantation as follows: 108 acres of eight year pine, 277 acres of fifteen year pines with older age pine and hardwood Stream-side Management Zones comprising the balance. There are 2 five acres ponds on the property connected by the SMZ which creates a wildlife travel corridor along Holly Branch. Road frontage on the west along County Road 2121 and utilities are available along C R 2120 on the south east corner for constructing a hunting lodge. Located only minutes away from the Yockanookany WMA the Tombigbee National Forest.

\$2250.00 per acre/ \$844,583



All information contained herein is supplied by sources deemed reliable, but is not guaranteed by Sartain's Heritage Properties, its Brokers or Agents. Properties are subject to errors, omissions, correction, price change, prior sale or withdrawal without notice.