

49.07 Acres

W. Bright Road Duncan, SC 29334

NAI Earle Furman

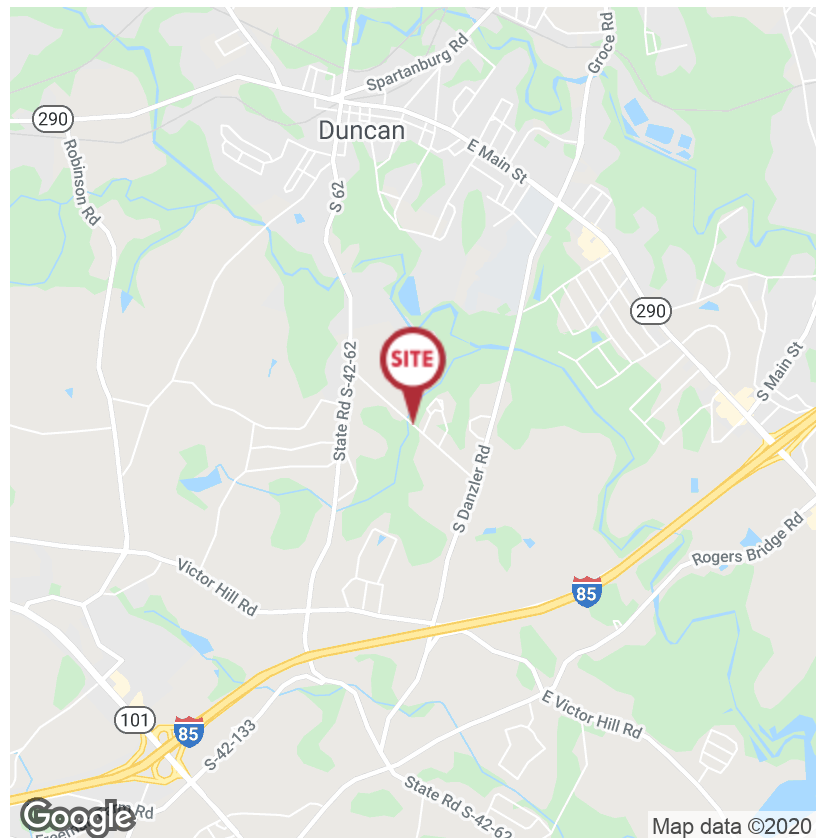
\$16,500/ACRE



PRICE REDUCED

W. Bright Road, Duncan, SC

- 49.07± acres ideal for residential development
- Spartanburg County TMS: 5-20-00-019.00
- Within city limits of Duncan
- Located within the SC Opportunity Zone
- Zoned RS4
- 4 miles from BMW Manufacturing Plant and 1 mile to I-85 (VPD: 93,100)
- 1,450 ft. of frontage on West Bright Road
- 1,200 ft. of frontage on the South Tyger River
- All utilities available
- 5-mile population (2019): 43,170



✉ **Rusty Hamrick**
O: +1 864 232 9040
rhamrick@naiearlefurman.com

No Warranty Or Representation, Express Or Implied, Is Made As To The Accuracy Of The Information Contained Herein, And The Same Is Submitted Subject To Errors, Omissions, Change Of Price, Rental Or Other Conditions, Prior Sale, Lease Or Financing, Or Withdrawal Without Notice, And Of Any Special Listing Conditions Imposed By Our Principals No Warranties Or Representations Are Made As To The Condition Of The Property Or Any Hazards Contained Therein Are Any To Be Implied.

📍 **101 E Washington St**
Greenville, SC 29601
naief.com

Property Maps

W. Bright Road Duncan, SC 29334



✉ **Rusty Hamrick**
O: +1 864 232 9040
rhamrick@naearlefurman.com

No Warranty Or Representation, Express Or Implied, Is Made As To The Accuracy Of The Information Contained Herein, And The Same Is Submitted Subject To Errors, Omissions, Change Of Price, Rental Or Other Conditions, Prior Sale, Lease Or Financing, Or Withdrawal Without Notice, And Of Any Special Listing Conditions Imposed By Our Principals No Warranties Or Rep-resentations Are Made As To The Condition Of The Property Or Any Hazards Contained Therein Are Any To Be Implied.

NAI Earle Furman

FOR SALE

W. Bright Road Duncan, SC 29334

2006 Infrared



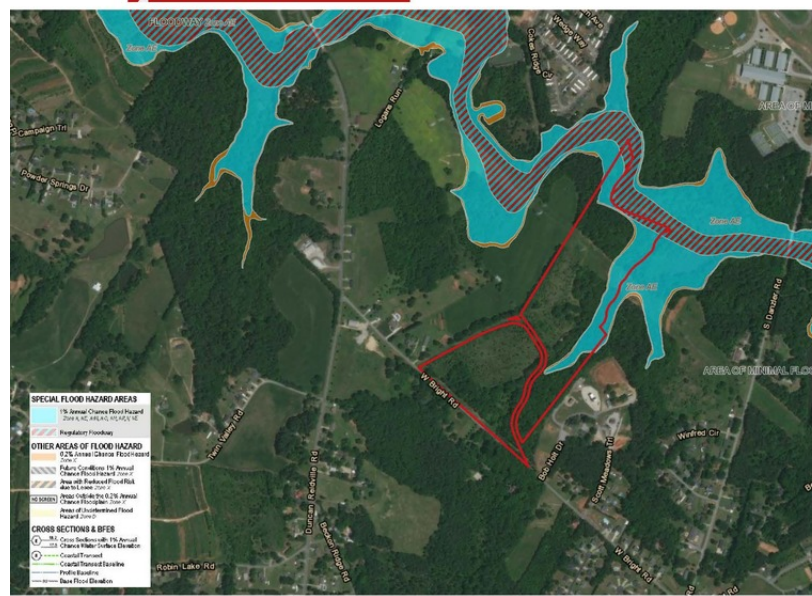
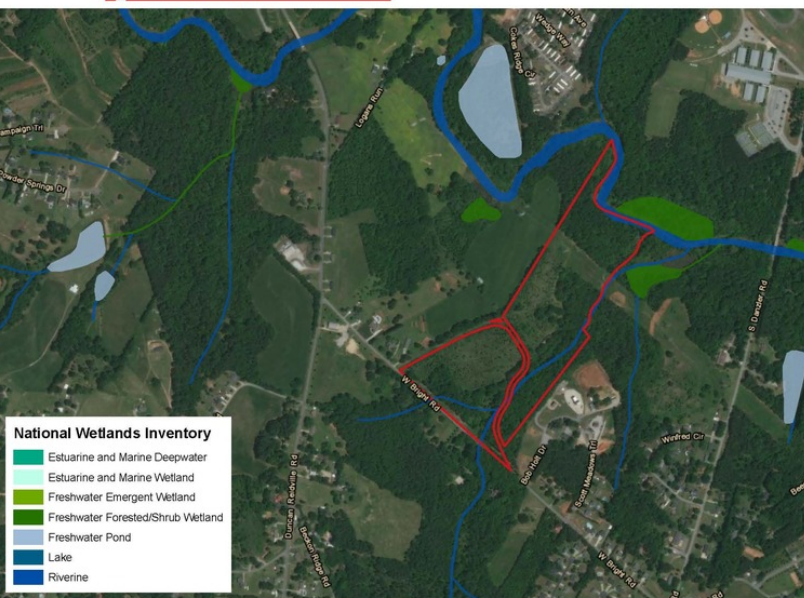
Topographical Map



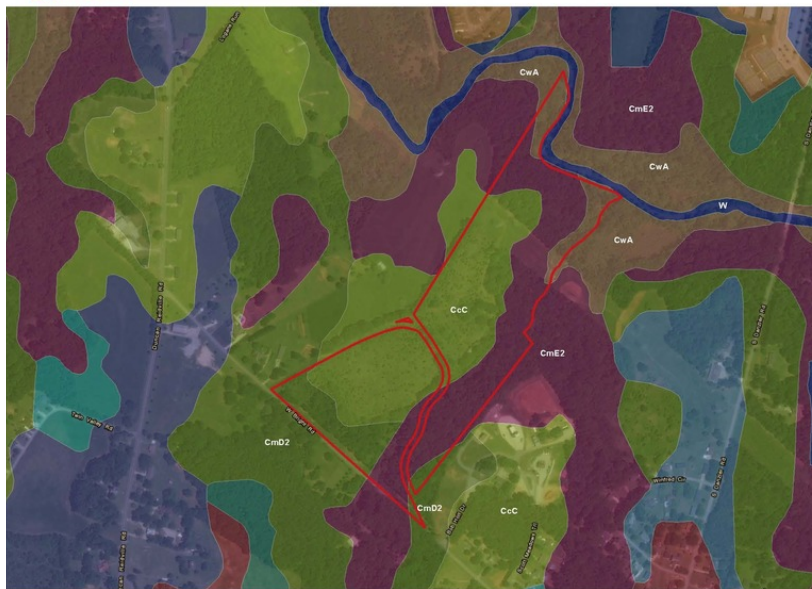
FEMA Flood Zones



National Wetlands Inv.



Soil Survey



 **Rusty Hamrick**
O: +1 864 232 9040
rhamrick@naiearlefurman.com

No Warranty Or Representation, Express Or Implied, Is Made As To The Accuracy Of The Information Contained Herein, And The Same Is Submitted Subject To Errors, Omissions, Change Of Price, Rental Or Other Conditions, Prior Sale, Lease Or Financing, Or Withdrawal Without Notice, And Of Any Special Listing Conditions Imposed By Our Principals. No Warranties Or Rep-resentations Are Made As To The Condition Of The Property Or Any Hazards Contained Therein Are Any To Be Implied.

NAI Earle Furman