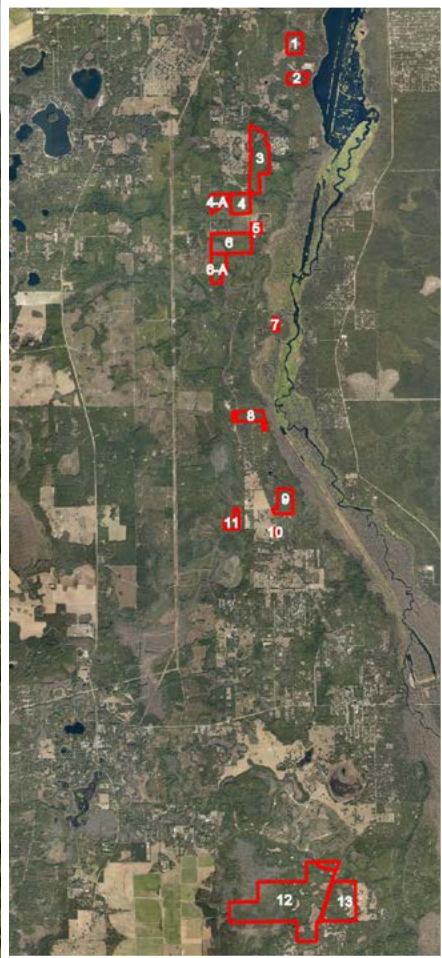


OCKLAWAHA RIVER PRESERVE

FORT MCCOY, FL | MARION COUNTY

3 TRACTS REMAIN!



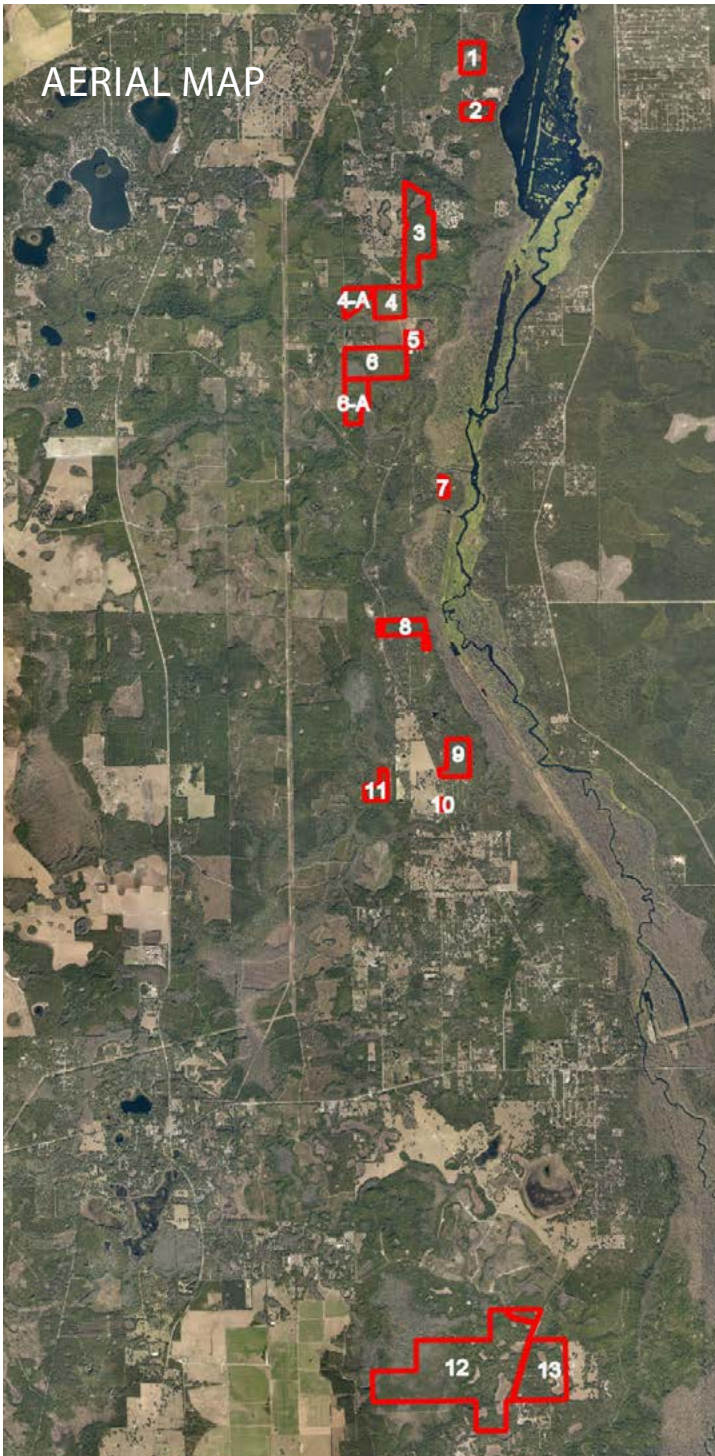


Great Fishing and Recreational Opportunities!

Ocklawaha River Preserve

The Ocklawaha River Preserve provides a rare opportunity to own 15 parcels totaling 1,016 ± acres in eastern Marion County Florida. These parcels can be offered as a whole or in 15 separate tracts ranging from 2.7 acres to 440 acres. All properties are located near the Ocklawaha River and some as close as 1,000 ± feet away, the furthest being 1.7 ± miles away. This area offers superb fishing and recreational opportunities.

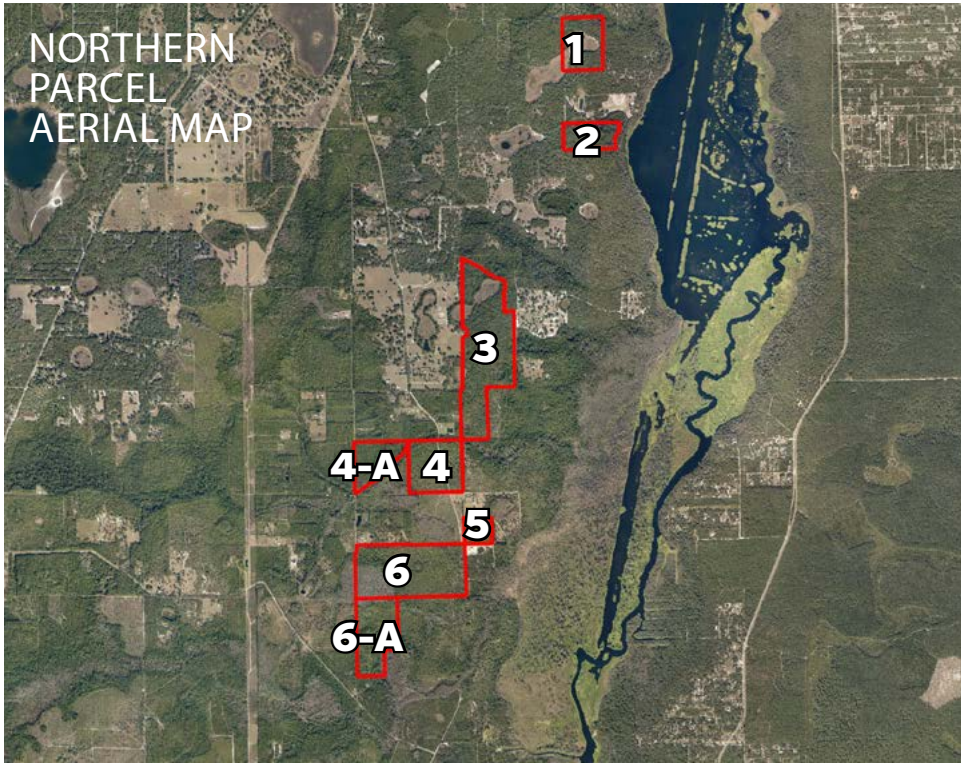
Many of the properties are located next to the Marjorie Harris Cross Florida Greenway as well as the Etoniah/Cross Florida Greenway, which offers excellent hunting of deer and turkeys. Contact the listing agents to schedule a showing or for additional details about each property.



LOCATION & DRIVING DIRECTIONS

GPS Location: -81.9366, 29.4649

Showing Instructions: Contact listing agents for showing instructions



NORTHERN PARCEL DESCRIPTIONS



Parcel 1
31.1 ± acres
\$111,960
\$3,600 per Acre

Parcel #: 00505-000-00
Site GPS: -81.92548,
29.49499
Uplands: 21.7 ± Acres
Uplands
Taxes 2018: \$88.46



Parcel 2
20.7 ± acres
\$81,765
\$3,950 per Acre

Parcel #: 00505-000-01
Site GPS: -81.93296,
29.47795
Uplands: 20.7 ± Acres
Uplands
Taxes 2018: \$54.37



Parcel 3
102 ± acres
\$357,000
\$3,500 per Acre

Parcel #: 04815-000-01,
04809-000-01
Site GPS: -81.93453,
29.47842
Uplands: 87 ± Acres
Uplands
Taxes 2018: \$58.31,
\$255.70



Parcel 4
40.5 ± acres
\$159,975
\$3,950 per Acre

Parcel #: 04815-000-02
Site GPS: -81.93634,
29.46452
Uplands: 40 ± Acres Uplands
Taxes 2018: \$101.64



Parcel 4-A
22.20 ± acres
\$87,690
\$3,950 per Acre

Parcel #: 04817-002-01
Site GPS: -81.94322,
29.46596
Uplands: 19.1 ± Acres Uplands
Taxes 2018: \$1,057.06



Parcel 5
10.4 ± acres
\$41,080
\$3,950 per Acre

Parcel #: 04815-000-03
Site GPS: -81.93458,
29.45894
Uplands: 10.4 ± Acres
Uplands
Taxes 2018: \$36.68



Parcel 6 & 6A
126 ± acres
\$415,800
\$3,300 per Acre

Parcel #: 04815-000-05,
05554-000-01
Site GPS: -81.93458,
29.45894
Uplands: 87 ± Acres
Uplands
Taxes 2018: \$188.30



1723 Bartow Rd | Lakeland, Florida 33801

*Properties are across the river from the Ocala National Forest, Gores Landing Wildlife Preserve and Lake Ocklawaha/Rodman Reservoir
Perfect for recreational activities!*

Visit SVNsaunders.com and search for **Ocklawaha River**

Keat Waldron, 863.225.1231 | keat.waldron@svn.com



HEADQUARTERS
1723 Bartow Rd
Lakeland, Florida 33801
863.648.1528

NORTH FLORIDA
356 NW Lake City Ave
Lake City, Florida 32055
386.438.5896

GEORGIA
125 N Broad Street, Suite 210
Thomasville, Georgia 31792
229.299.8600

©2021 SVN | Saunders Ralston Dantzler Real Estate.
All SVN® Offices Independently Owned and Operated

SVN | Saunders Ralston Dantzler Real Estate is a full-service land and commercial real estate brokerage with over \$3 billion in transactions representing buyers, sellers, investors, institutions, and landowners since 1996. We are recognized nationally as an authority on all types of land, including agriculture, ranch, recreation, residential development, and international properties. Our commercial real estate services include marketing, property management, leasing and tenant representation, valuation, business brokerage, and advisory and counseling services for office, retail, industrial, and multi-family properties. Our firm also features an auction company, forestry division, international partnerships, hunting lease management, and extensive expertise in conservation easements. Located at the center of Florida's I-4 corridor, we provide proven leadership and collaborative expertise backed by the strength of the SVN® global platform. To learn more, visit SVNsaunders.com.

