

PRICE REDUCED

INDUSTRIAL DEVELOPMENT SITE

2923 LANIER HEIGHTS ROAD
MACON, BIBB COUNTY, GEORGIA 31217



REDUCED SALES PRICE:

~~\$100,000~~ \$85,000

LOCATION OVERVIEW

- Convenient access to Ocmulgee East Boulevard, a primary industrial connector
- Approximately 6 miles to Interstate 16, providing east-west access to Savannah and the Port of Savannah
- Approximately 7 miles to Interstate 75, a major north-south corridor connecting Atlanta and Florida
- Near Middle Georgia Regional Airport and the Airport Industrial area
- Central Georgia location supports efficient regional distribution and logistics operations

PROPERTY OVERVIEW

- Industrial development site ideal for industrial or commercial use
- 0.77± Acres of land ready for development
- Approximately 90' of frontage on Lanier Heights Road for strong street presence
- Zoned M2 (Heavy Industrial) allowing a variety of industrial and manufacturing uses
- Flat topography, facilitating cost-effective development and construction
- All public utilities available to the site
- Property Tax Bill: \$746.87 (2025)

ARTHUR P BARRY III, SIOR

478.731.8000 Cell

abarry@cbcgeorgia.com

990 RIVERSIDE DRIVE • MACON, GA 31201 • 478.746.8171 • CBCMACON.COM



COLDWELL BANKER
COMMERCIAL

EBERHARDT & BARRY

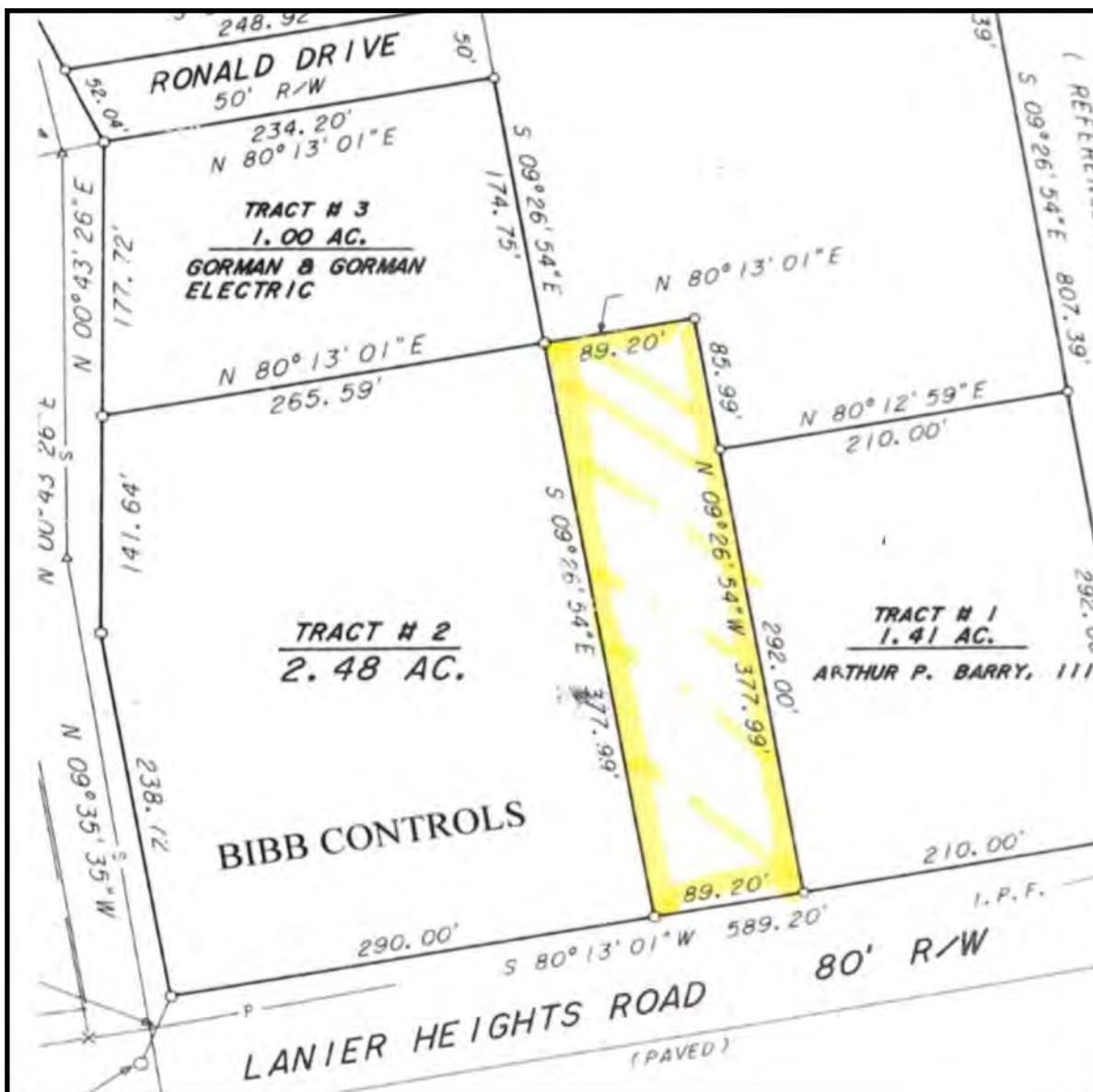
Revised 1/21/26

PRICE
REDUCED

INDUSTRIAL DEVELOPMENT SITE

2923 LANIER HEIGHTS ROAD
MACON, BIBB COUNTY, GEORGIA 31217

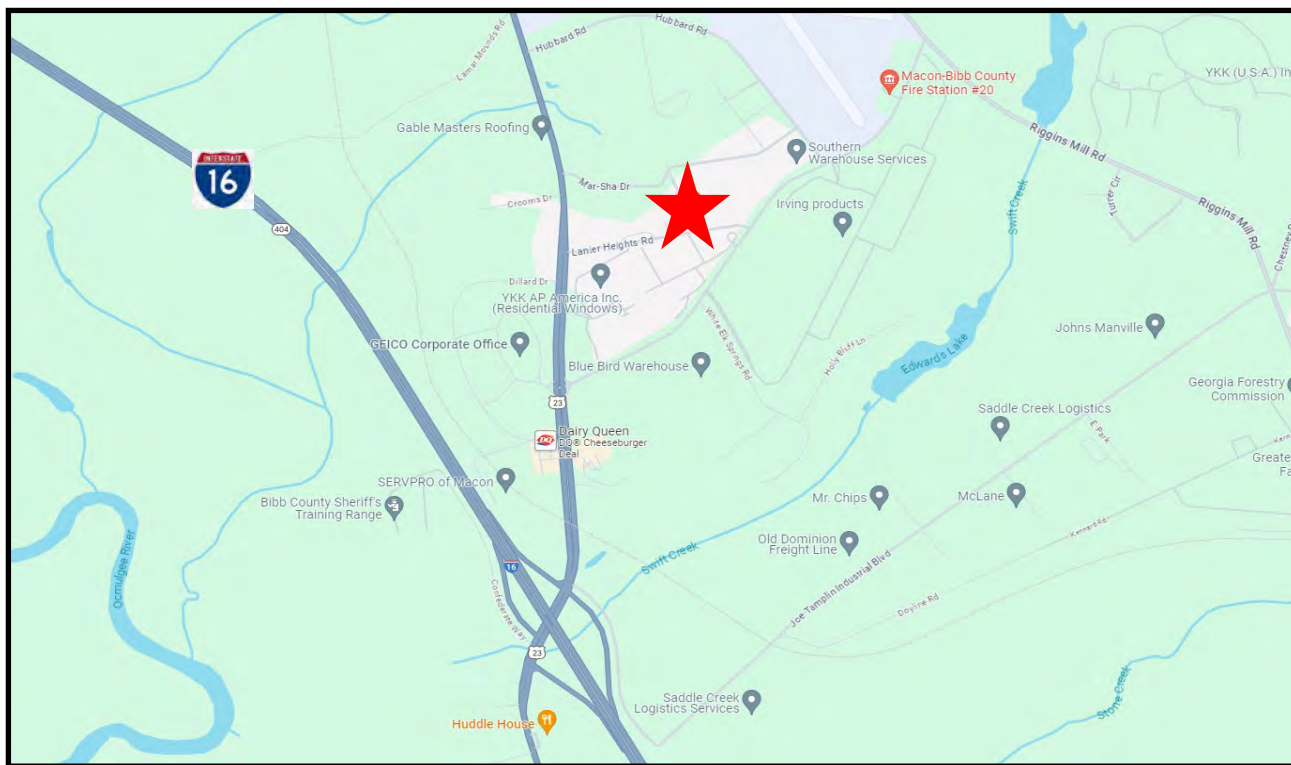
PROPERTY SURVEY



**PRICE
REDUCED**

INDUSTRIAL DEVELOPMENT SITE

**2923 LANIER HEIGHTS ROAD
MACON, BIBB COUNTY, GEORGIA 31217**



ARTHUR P BARRY III, SIOR

478.731.8000 Cell

abarry@cbcgeorgia.com

990 RIVERSIDE DRIVE • MACON, GA 31201 • 478.746.8171 • CBCMACON.COM

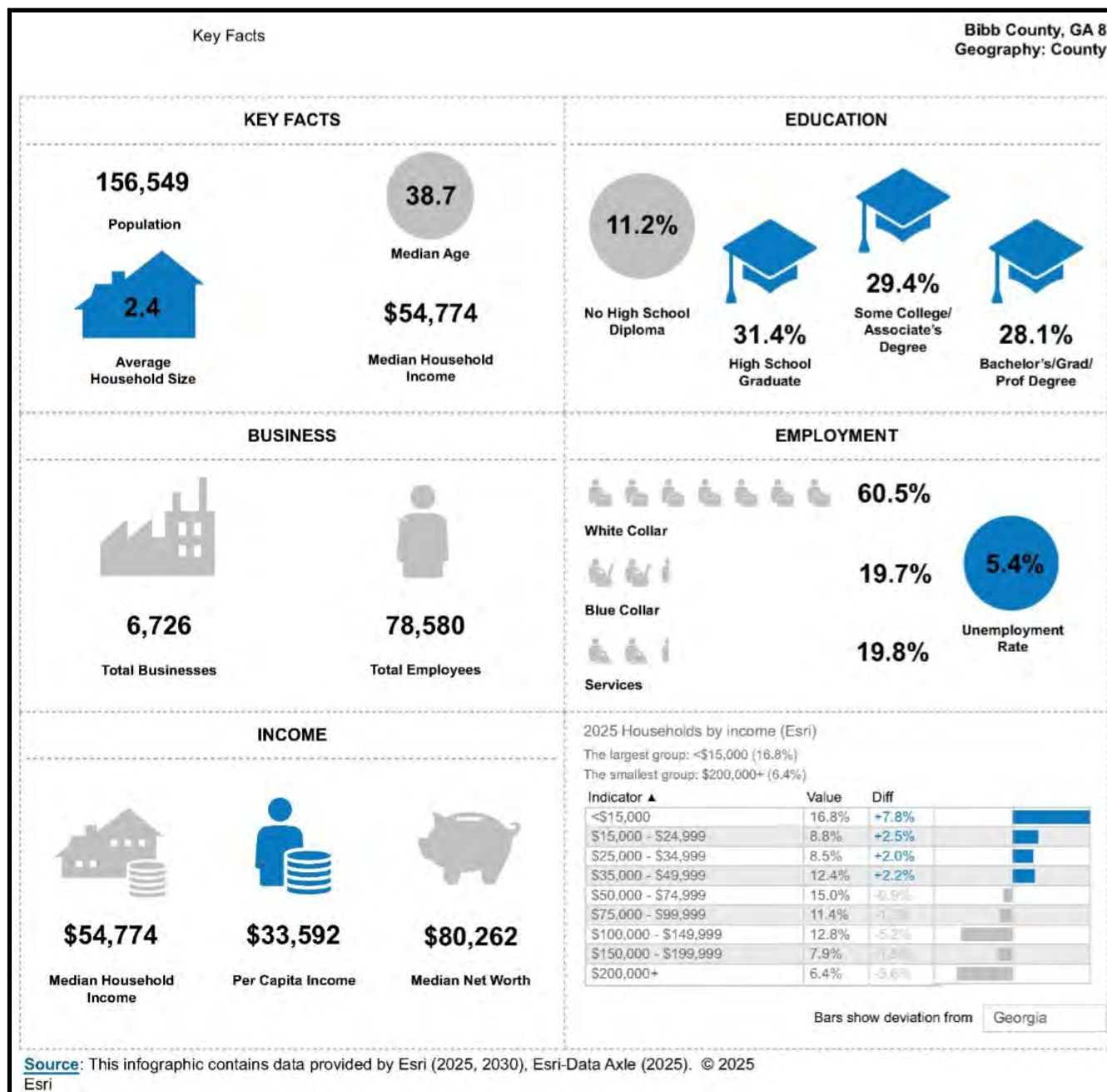


**COLDWELL BANKER
COMMERCIAL**
EBERHARDT & BARRY

PRICE REDUCED

INDUSTRIAL DEVELOPMENT SITE

2923 LANIER HEIGHTS ROAD
MACON, BIBB COUNTY, GEORGIA 31217



ARTHUR P BARRY III, SIOR
478.731.8000 Cell
abarry@cbcgeorgia.com

990 RIVERSIDE DRIVE • MACON, GA 31201 • 478.746.8171 • CBCMACON.COM



COLDWELL BANKER
COMMERCIAL
EBERHARDT & BARRY